

# THE HILLS VILLAGE CENTER

BEDMINSTER, NJ



A Longpoint Subsidiary

550 HILLS DRIVE, BEDMINSTER, NJ 07921

# Highlights

The Hills Village Center is located in Bedminster, New Jersey. The vibrant shopping center is a bustling hub of activity located at the intersection of Hills Drive and Route 206. With its prominent position, the shopping center benefits from high visibility and easy access. Anchored by Kings Food Markets, and with Starbucks as a notable tenant, the center offers a diverse range of retail options, dining establishments, and professional services, ensuring an enjoyable and convenient shopping experience for residents of The Hills community and surrounding areas. The Hills Village Center's strategic location near Interstate 287 adds to its accessibility and appeal.

531-4,155 SF available



Located off Route 202 & 206



Over 19,000 cars per day on Route 202



Thriving shopping center anchored by Kings and CVS



Located at one of the busiest major retail nodes and intersections in Somerset County



I-287 access within minutes of site



Great Clips

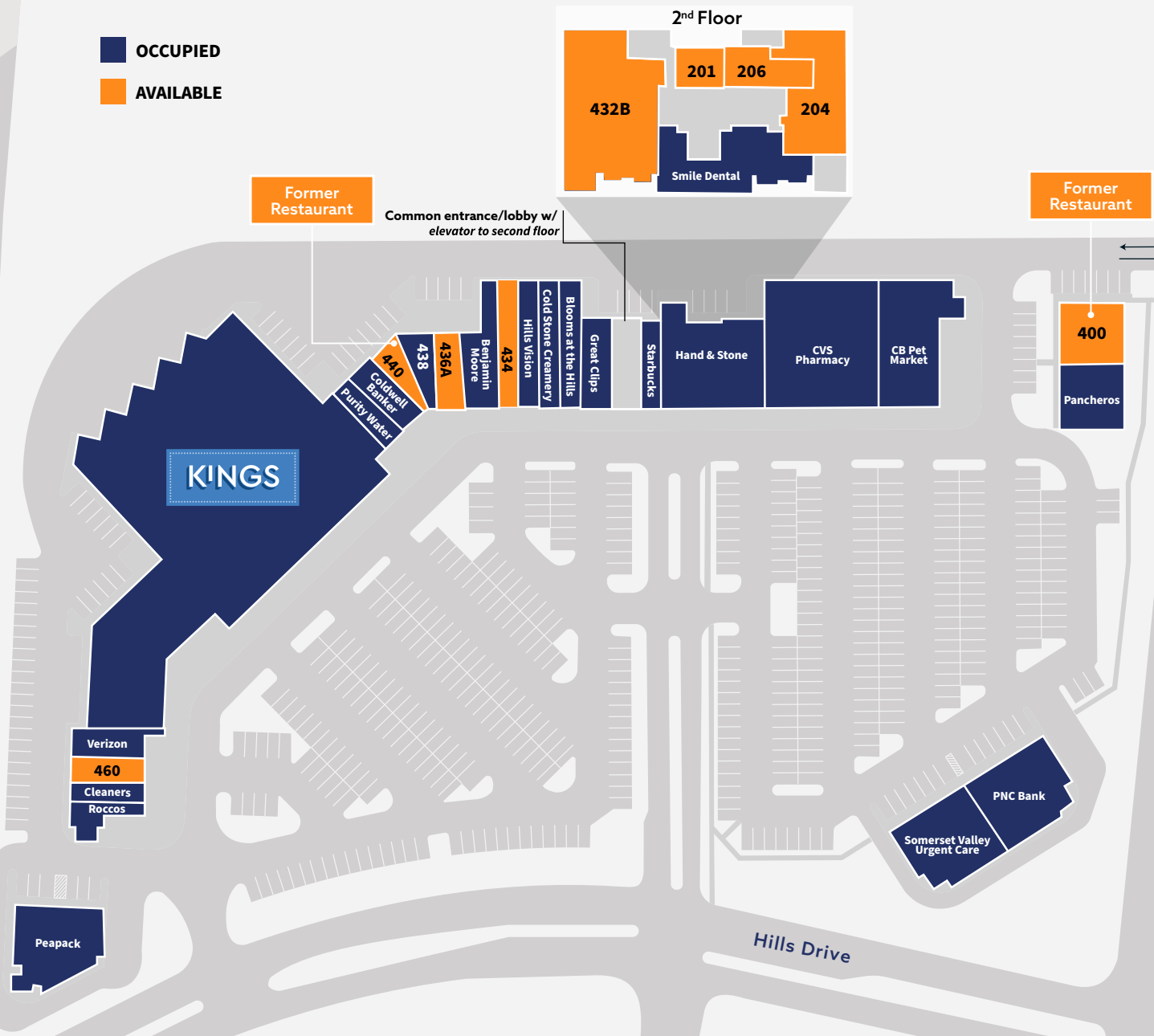


Notable surrounding retailers and restaurants, see map



# Site Plan

**■ OCCUPIED**  
**■ AVAILABLE**

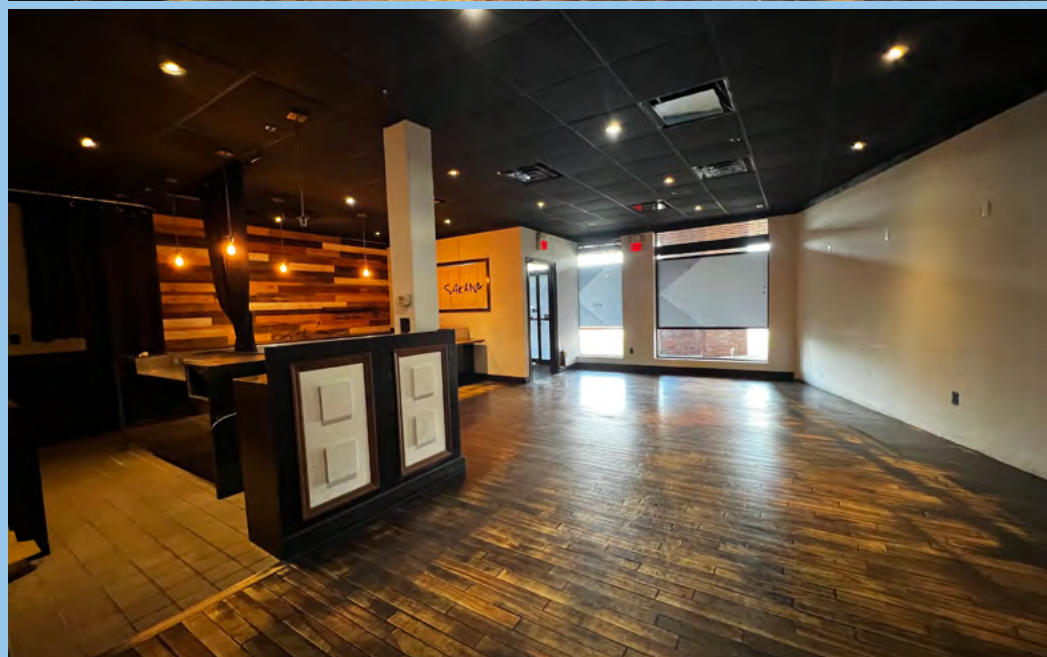


SUITE	FLOOR	TENANT	SF
201	2	Available	531
204	2	Available	2,012
206	2	Available	964
<b>400</b>	<b>1</b>	<b>Available (Former Restaurant)</b>	<b>2,650</b>
402	1	Pancheros Mexican Grill	2,500
412	1	CB Pet Market	4,302
414	1	CVS	10,000
416	1	Hand & Stone	2,317
422	1	Great Clips	960
426	1	Blooms at the Hills	960
428A	1	Hills Vision Studio	1,084
428B	1	Cold Stone Creamery	1,084
432	1	Starbucks	1,943
432A	2	Smile! Dental	2,644
432B	2	Available	4,155
434	1	Available	3,190
436	1	Ricciardi Brothers	3,147
436A	1	Available	1,942
438	1	Stretch Zone	1,059
<b>440</b>	<b>1</b>	<b>Available (Former Restaurant)</b>	<b>1,840</b>
442	1	Coldwell Banker	2,299
446	1	Purity Water	1,000
450	1	Kings Food Market	35,692
456	1	Verizon	2,422
460	1	Available	1,214
462	1	Village Cleaners at the Hills	2,655
466	1	Roccos Pizza and Restaurant	1,860
468	1	Peapack Gladstone Bank	5,000
470	1	PNC Bank	5,487
470A	1	Somerset Valley Urgent Care	3,892

# Suite 400 - 2,650 SF

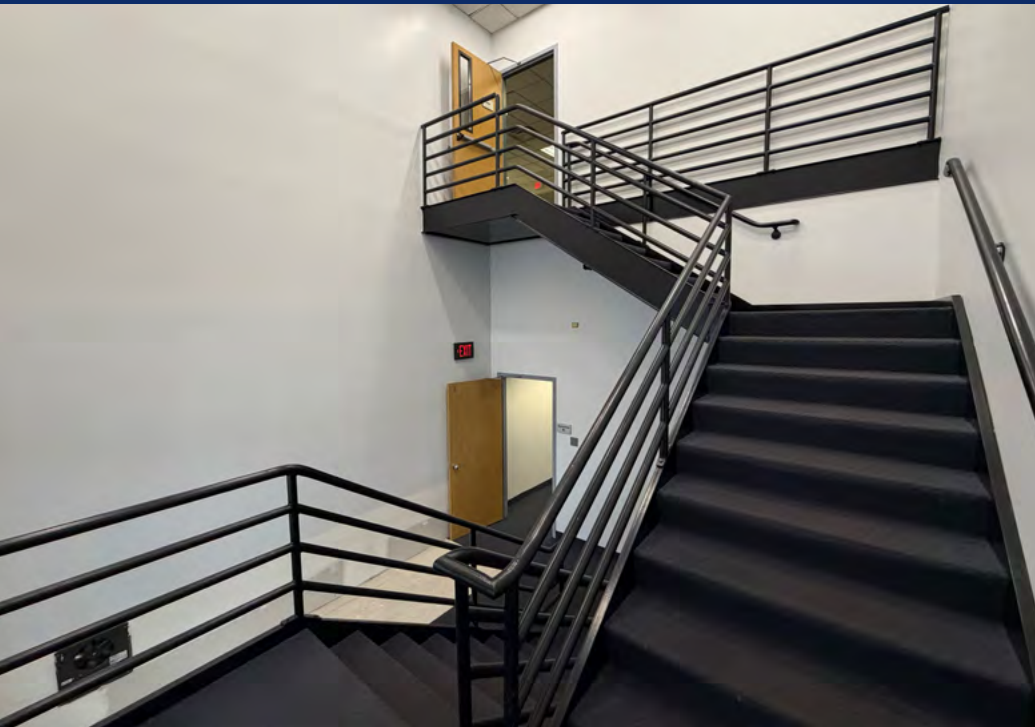


# Suite 440 - 1,840 SF





# 2nd Floor Common Lobby





**5-MILE RADIUS**

**10-MINUTE DRIVE**

**15-MINUTE DRIVE**

**POPULATION**

59,820

35,936

127,477

**BACHELOR'S DEGREE &  
ABOVE**

67.2%

68.4%

60.6%

**AVG HOUSEHLD INCOME**

\$230,910

\$226,196

\$204,158

**MEDIAN HOME VALUE**

\$711,180

\$719,430

\$711,979

**DAYTIME EMPLOYEES**

83,927

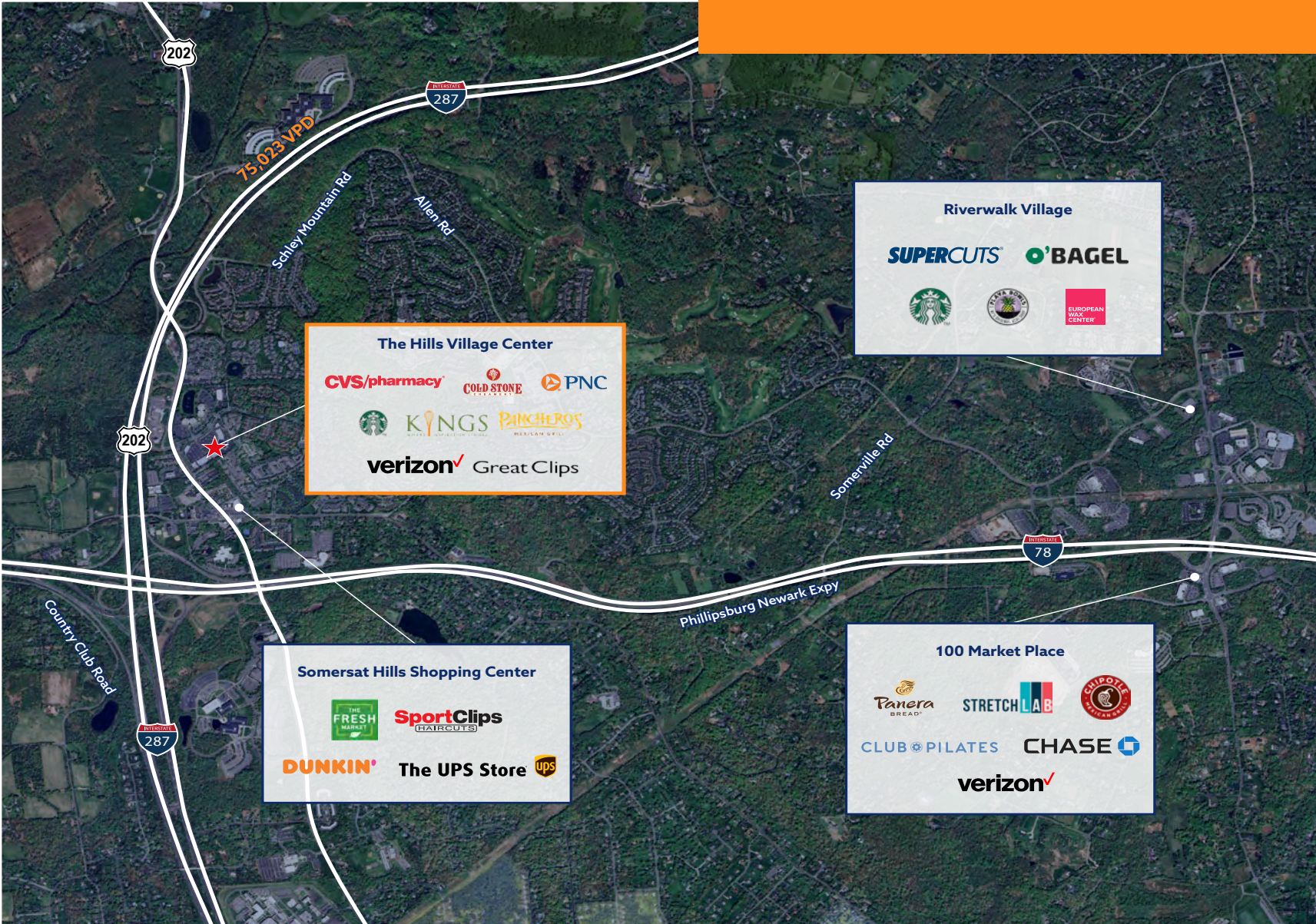
56,271

175,025

# Trade Area



# Aerial Location







## Contact

David Townes  
Managing Director  
Retail Advisory  
**+1 917 993 5515**  
david.townes@jll.com

Craig Parcels  
Senior Vice President  
Retail Advisory  
**+1 201 618 7223**  
craig.parcels@jll.com

Alana Friedman  
Vice President  
Retail Advisory  
**+1 201 741 0990**  
alana.friedman@jll.com



Although information has been obtained from sources deemed reliable, JLL does not make any guarantees, warranties or representations, express or implied, as to the completeness or accuracy as to the information contained herein. Any projections, opinions, assumptions or estimates used are for example only. There may be differences between projected and actual results, and those differences may be material. JLL does not accept any liability for any loss or damage suffered by any party resulting from reliance on this information. If the recipient of this information has signed a confidentiality agreement with JLL regarding this matter, this information is subject to the terms of that agreement. ©2026 Jones Lang LaSalle Brokerage, Inc. All rights reserved.