



325 Torbett St

325 Torbett St Richland, Washington 99354

Property Overview

Situated on nearly one acre of land, this highly visible commercial property is ideal for high-volume businesses requiring substantial on-site parking. Expansive glass windows flood the space with natural daylight, making it well suited for retail or office use. The property boasts an excellent location near Kadlec Regional Hospital, Chief Joseph Middle School, and the Uptown Shopping Center, with close proximity to a mix of local and national dining options.

Property Highlights

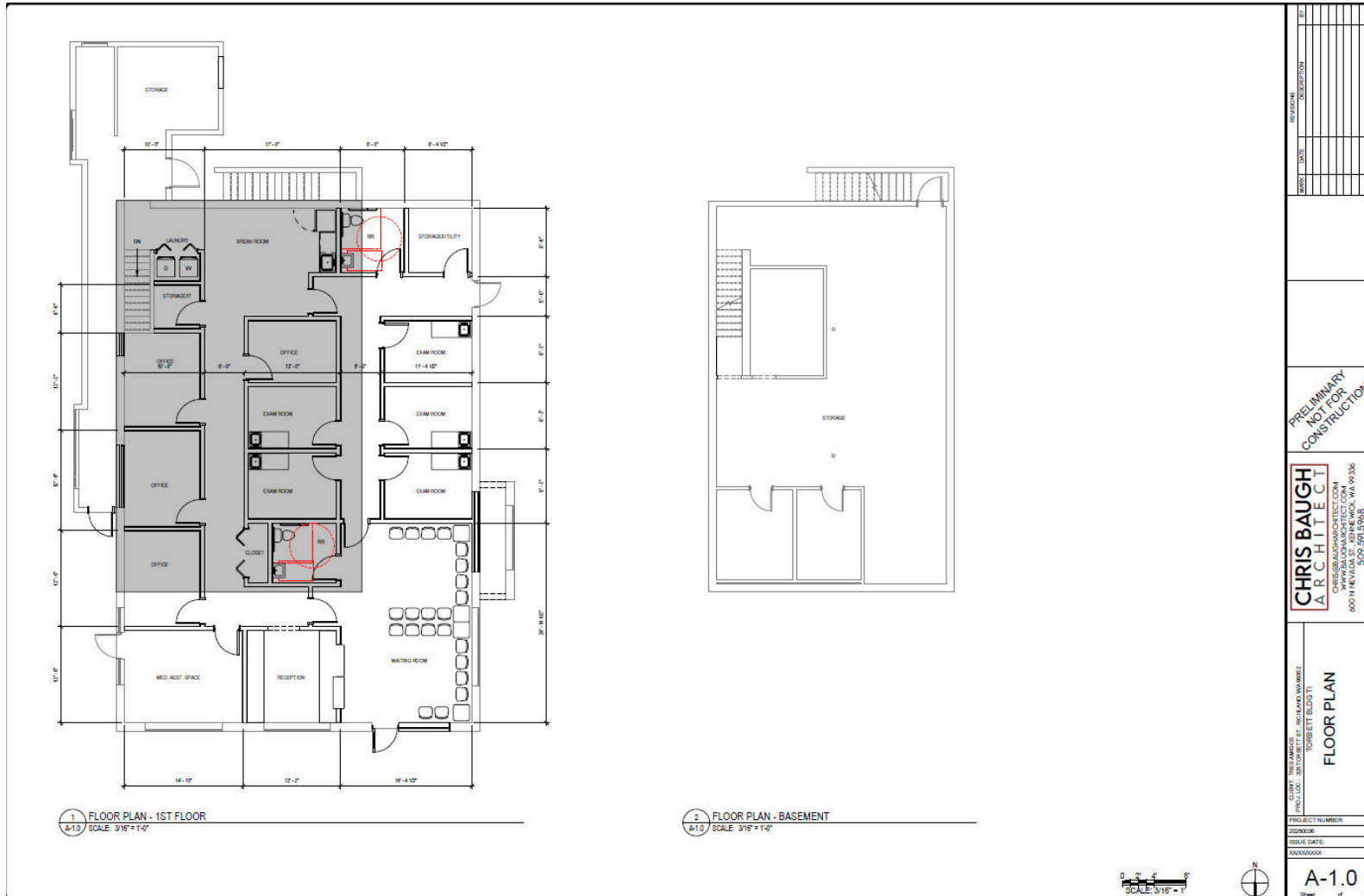
- Located on a signalized corner
- Easy ingress and egress access
- Ample parking
- Tenant Improvement Allowance negotiable

| | |
|-----------------------|------------------|
| Lease Rate: | \$18 PSF + (NNN) |
| Building Size: | ±4,985 SF |

For More Information

Todd Sternfeld

Principal / Commercial Broker
C: 509 539 3998
todd@naitcc.com



FLYER | 325 Torbett St 325 Torbett St Richland, WA 99354

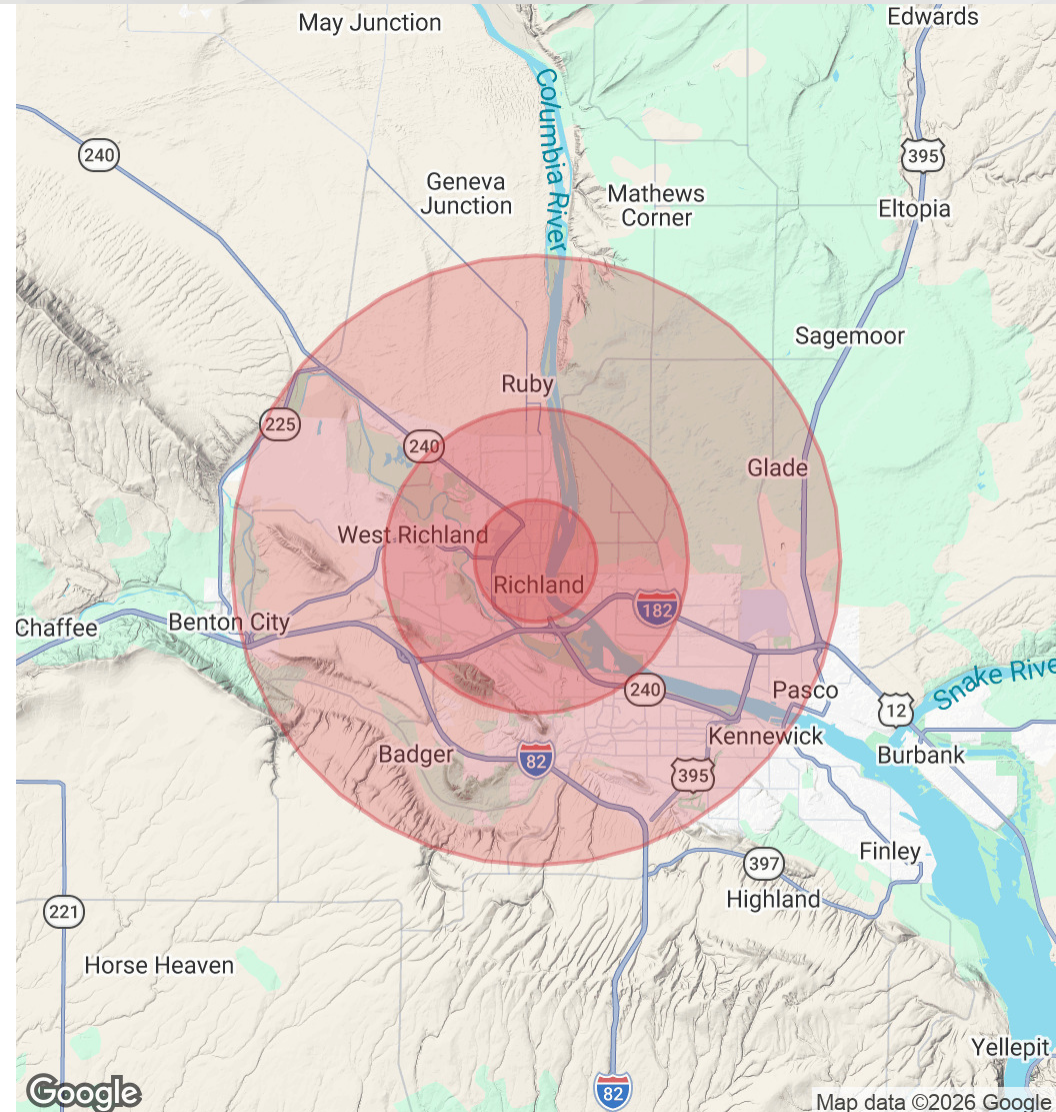


Imagery ©2026 Airbus, Landsat / Copernicus, Maxar Technologies, USDA/FPAC/GEO

FLYER | 325 Torbett St 325 Torbett St Richland, WA 99354

| | 2 Miles | 5 Miles | 10 Miles |
|--------------------------------|-----------|-----------|-----------|
| Population | | | |
| Total Population | 28,258 | 99,995 | 222,299 |
| Average Age | 39 | 38 | 38 |
| Average Age (Male) | 37 | 37 | 37 |
| Average Age (Female) | 40 | 39 | 38 |
| Households & Income | | | |
| Total Households | 11,225 | 37,425 | 80,285 |
| # of Persons per HH | 2.5 | 2.7 | 2.8 |
| Average HH Income | \$100,687 | \$133,645 | \$123,690 |
| Average House Value | \$371,965 | \$445,428 | \$431,384 |

Demographics data derived from AlphaMap



FLYER | 325 Torbett St 325 Torbett St Richland, WA 99354