



LandMark Real Estate Group presents up to 16,632 RSF within a class-A, five story professional complex, overlooking one of the market's most heavily traveled corridors at E. State & Mulford Rd—60,000 avg. daily traffic.

**Suite 150: 9,746 RSF**

**(Banking, Credit Union, Financial Institution)**

**Suite 210: 861 RSF**

**(Professional Office Space)**

**Suite 530: 6,025 RSF**

**(Professional Office Space)**

*Suites can be combined and  
divided as available*

**FOR MORE INFORMATION**

**C. Shane Van Sickle**

**shane@LMCOS.com**

**M: 815-979-0242**

**W: 815.639.0034 ext. 16**

LandMark Real Estate Group  
6735 Vistagreen Way, Suite 100  
Rockford, Illinois 61107

Ph 815.639.0034

Fx 815.639.0029

**[www.LMCOS.com](http://www.LMCOS.com)**



## **BUILDING HIGHLIGHTS**

- Move-in ready with Class-A finishes
- Banking/Financial Institution and Professional Office spaces available
- High traffic / high visibility corner with 60,000 ADT
- Flexible floor plans up to 16,632 RSF
- Local property management
- Two-story atrium to welcome guests
- Double loading docks and elevators
- Parking ratio: 4 per 1,000 SF
- Rockford Mass Transit service to the property
- Dining / retail / service amenities in the immediate vicinity

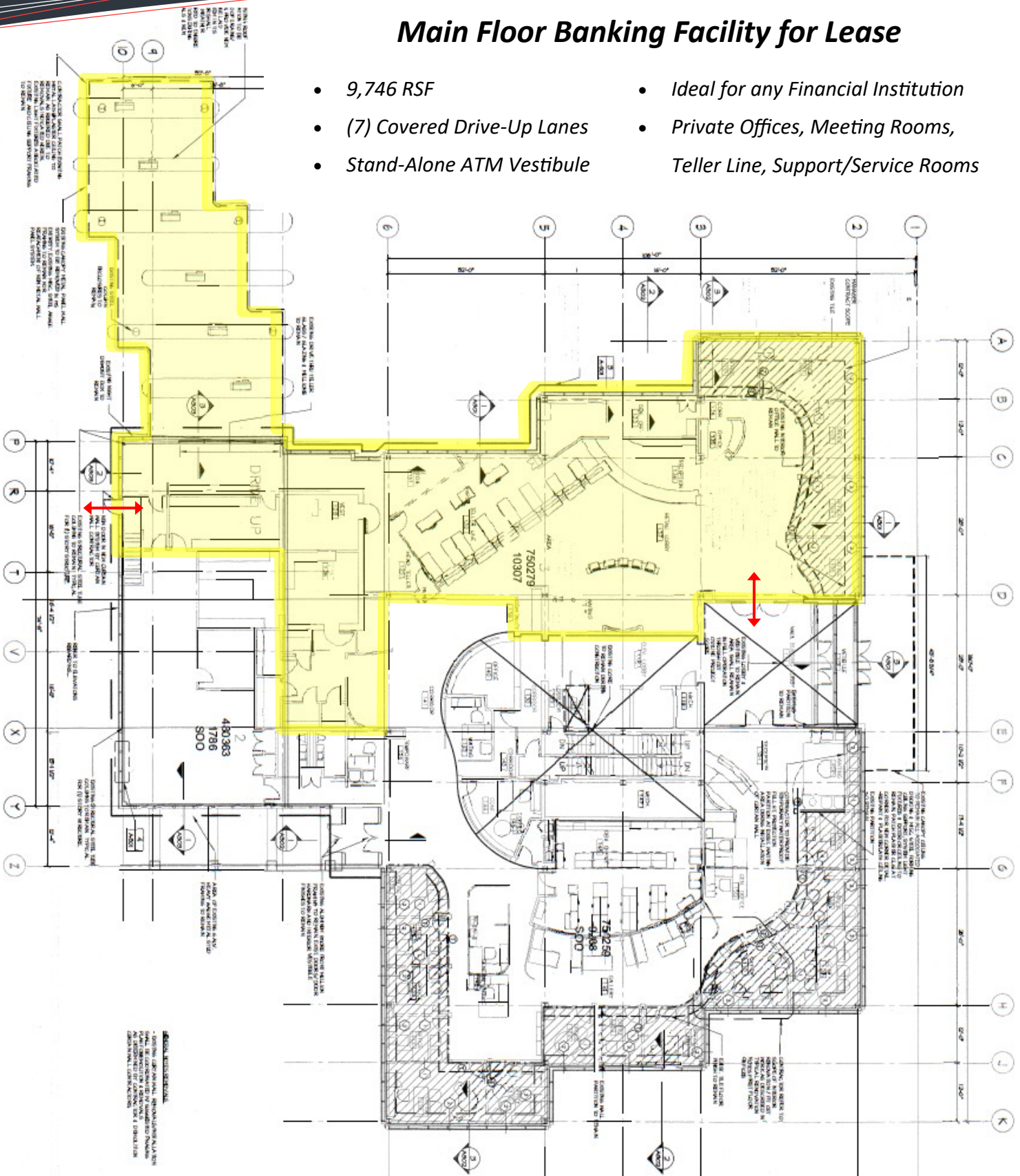


*TI Allowance Available for qualifying credit/term.*

*Please contact broker for current rental rate and operating expenses.*

**Main Floor Banking Facility for Lease**

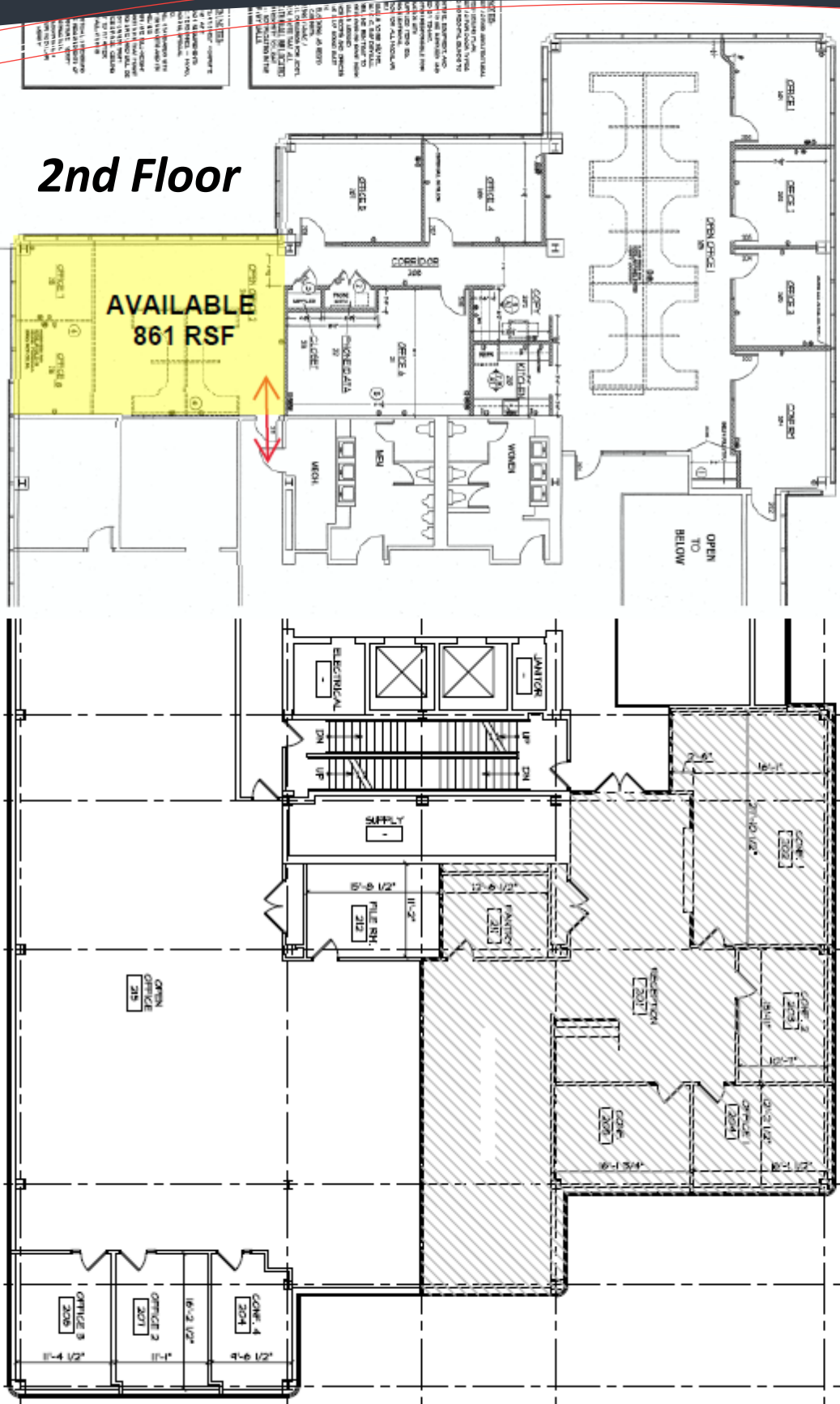
- 9,746 RSF
- (7) Covered Drive-Up Lanes
- Stand-Alone ATM Vestibule
- Ideal for any Financial Institution
- Private Offices, Meeting Rooms, Teller Line, Support/Service Rooms



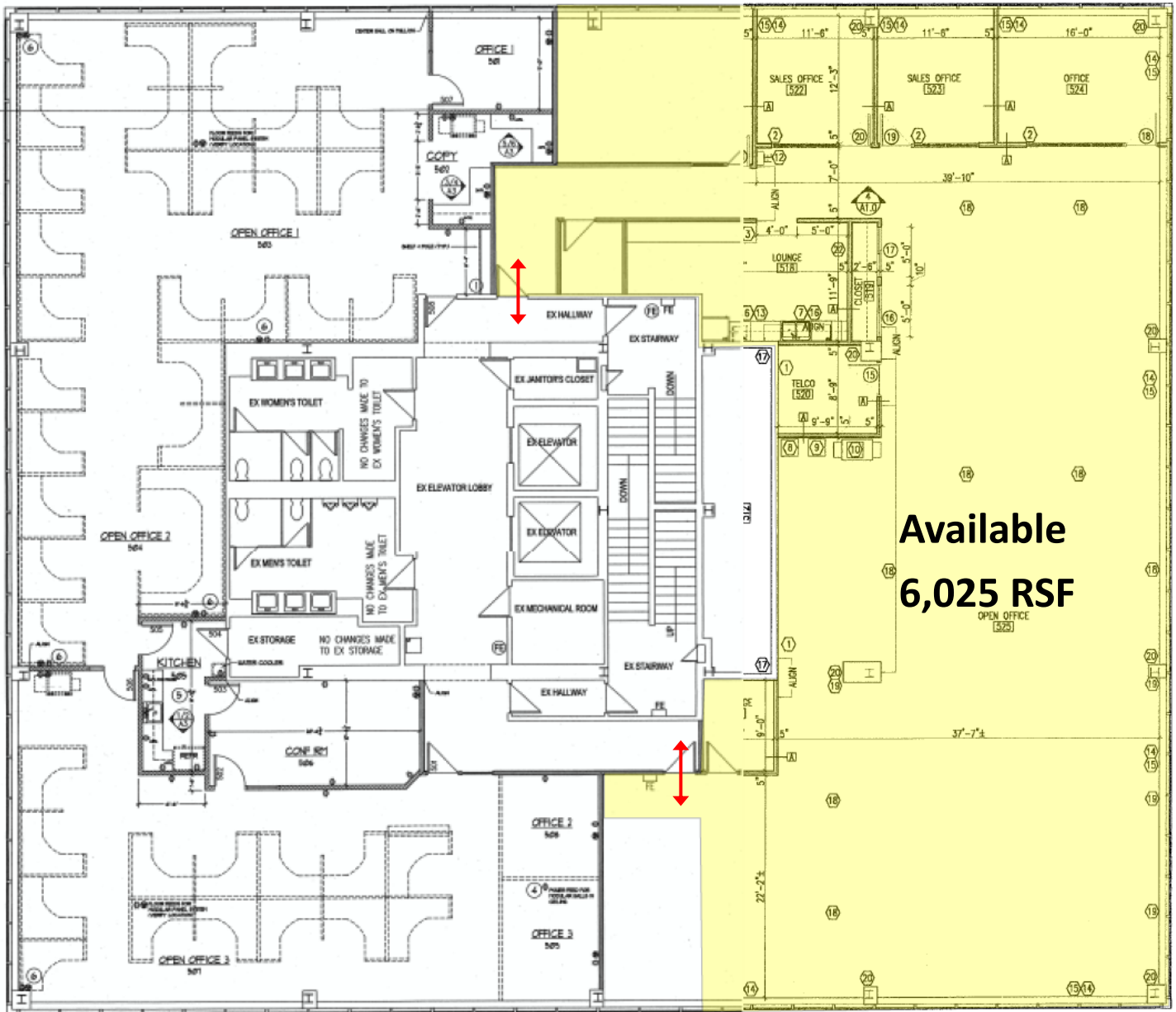
## 2nd Floor

**AVAILABLE**  
**861 RSF**

**6000 E State, Rockford IL**  
**2nd Floor**



**5th Floor**



### LOCATION AND ACCESS

Prominently positioned at the northeast corner of Mulford Road and East State Street, the location boasts over 60,000 vehicles per day, is convenient to all local arteries, regional highways, and is just 1.7 mi from I-90/39. Rockford is centrally located 80 miles NW of Chicago and 85 miles SW of Milwaukee.

