

FOR LEASE
39W963 MIDAN DRIVE
Elburn, IL 60119

**INDUSTRIAL SPACE
FOR LEASE!**

Unit 1: 2,700SF

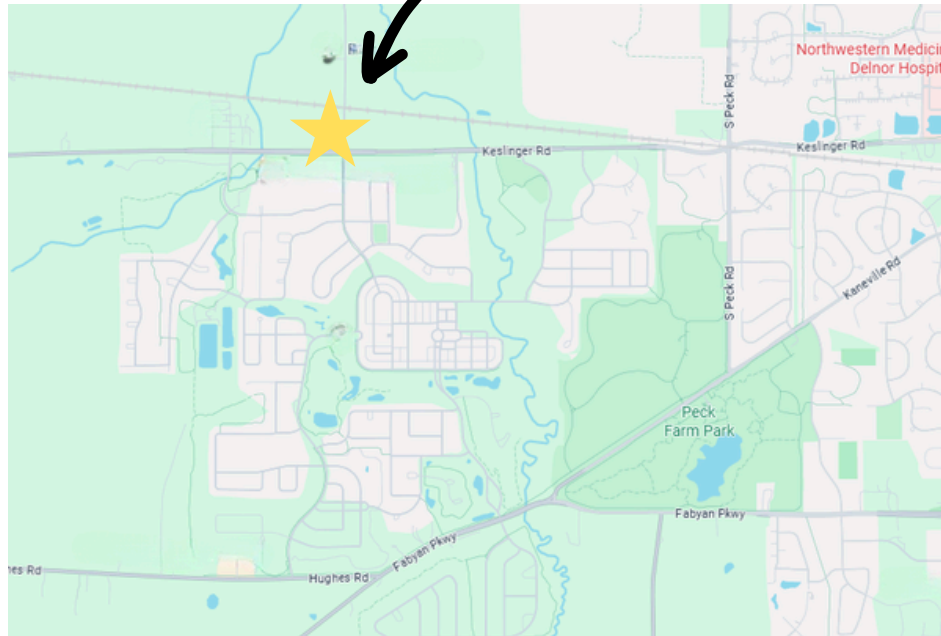
RATE: \$15/SF/YR MG
Utilities Seperate



Building Highlights

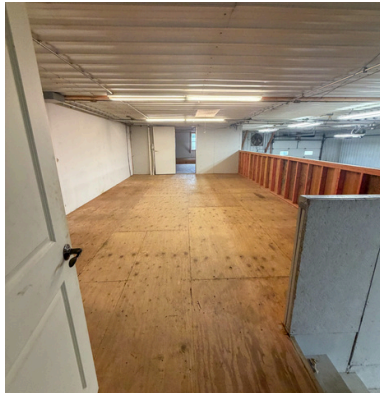
- ▶ Drive in Door
- ▶ Ample Parking
- ▶ Kitchen Area
- ▶ Bonus Mezzanine
- ▶ Outdoor Storage Available
- ▶ Office Space
- ▶ Private Washrooms
- ▶ Located Two Miles West of Randall Road off Keslinger Ave.

LOCATION



FOR LEASE

39W963 MIDAN DRIVE
Elburn, IL 60119



ABOUT THE PROPERTY

Position your business for success in this industrial/flex space in Elburn's thriving commercial corridor. Ideal for a wide range of uses including light industrial, contractor space, warehouse, or service-based operations. This professionally maintained property features convenient access to major transportation routes, making it easy to serve the greater Kane County and Chicagoland markets. Tenants will benefit from ample on-site parking, easy truck maneuverability, and a clean, well-managed business park environment. The location combines the advantages of a suburban setting with proximity to key highways and growing residential communities, providing both accessibility and visibility.

All information furnished regarding property for sale, rental or financing is from sources deemed reliable, but no warranty or representation is made to accuracy thereof and same is submitted to errors, omissions, change of price, rental or other conditions prior to sale, lease or financing or withdrawal without notice. No liability of any kind is to be imposed on the broker herein.



BRAD SCHREINER

MANAGING BROKER

 **BSCHREINER@BEICRE.COM**

 **630.457.1248**

 **140 FIRST STREET, BATAVIA, IL 60510**

 **WWW.BEICRE.COM**