

COLUSA RD @ HWY 395

A D E L A N T O C A

FOR SALE OR LEASE

NEWMARK

±146.38 ACRES



±146.38 Acres
Site Size



Located in Business Friendly
San Bernardino County jurisdiction



Immediate Access to 395 Freeway
Access



Opportunity Zone



Local Infrastructure
[Link to City of Adelanto Maps](#)

COLUSA ROAD



Colusa Rd, Adelanto



Viking Run Logistics Center

ADELANTO AIRPORT
LOGISTICS CENTER



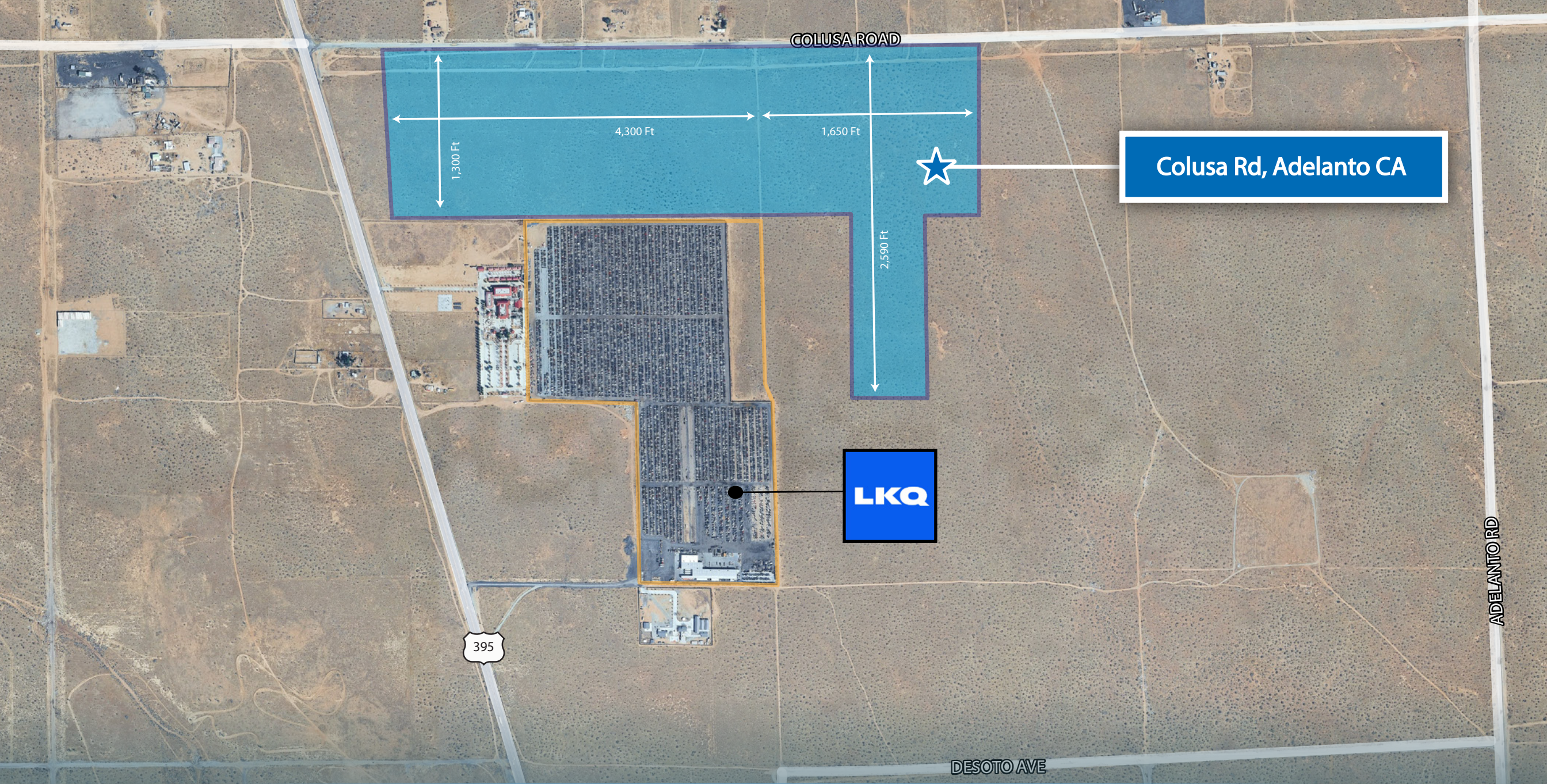
Amazon



AIR EXPY

66

395



COLUSA ROAD

1,300 Ft

4,300 Ft

1,650 Ft

2,590 Ft

Colusa Rd, Adelanto CA

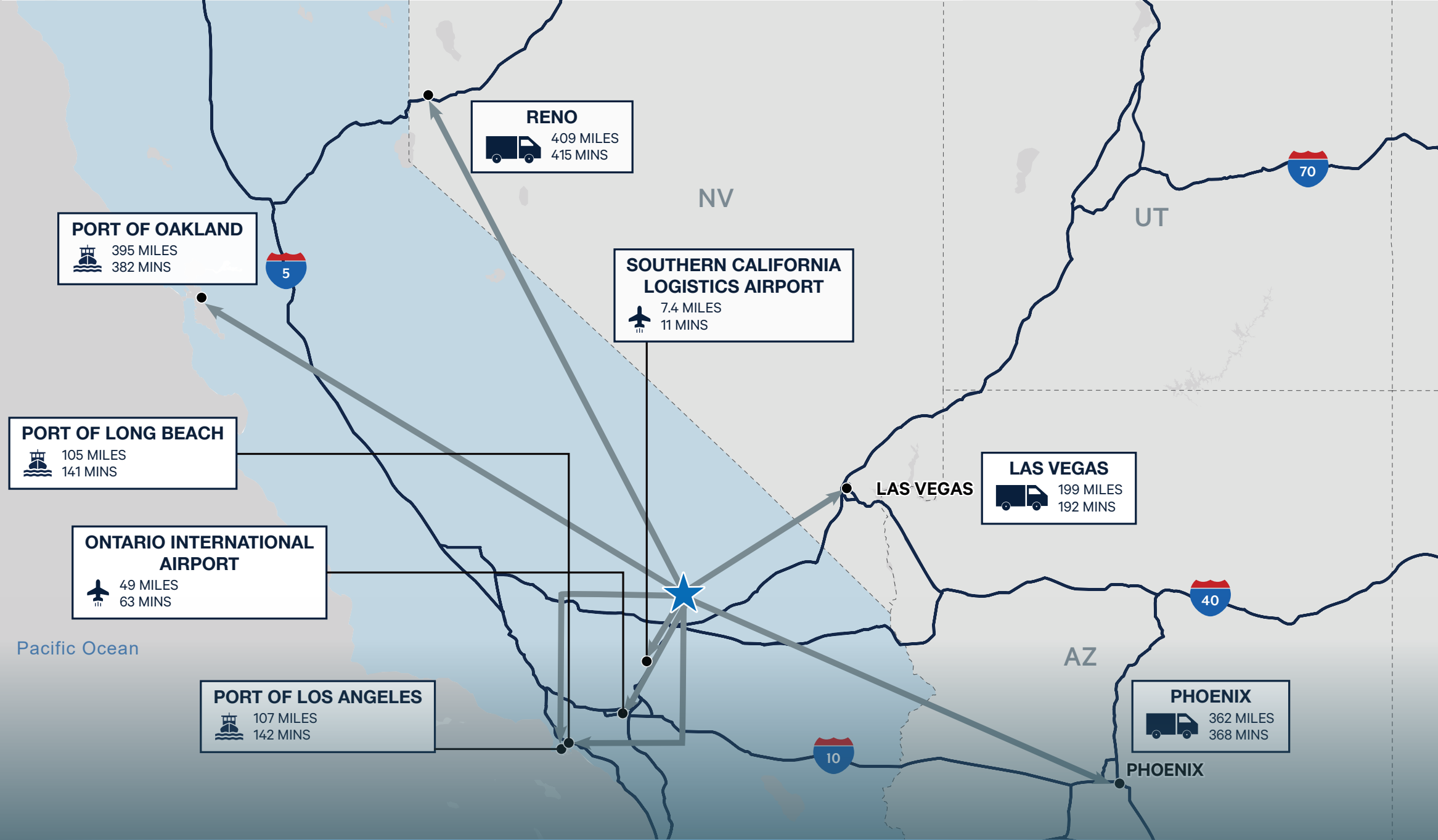
LKQ

395

ADELANTO RD

DESOTO AVE

MAP



DRIVE TIME

Josh Hayes

Senior Managing Director
Industrial & Land Advisory Services
t 909-974-4043
josh.hayes@nmrk.com
CA RE Lic. #01300731

Craig McKenzie

Managing Director
Industrial & Land Advisory Services
t 626-664-1567
craig.mckenzie@nmrk.com
CA RE Lic. #01371536

Jack Chambers

Associate
Industrial & Land Advisory Services
t 909-974-4031
jack.chambers@nmrk.com
CA RE Lic. #02328974

David Noblitt

Senior Managing Director
Industrial & Land Advisory Services
t 909-974-4023
david.noblitt@nmrk.com
CA RE Lic. #01961575

Corporate License #01355491

The information contained herein has been obtained from sources deemed reliable but has not been verified and no guarantee, warranty or representation, either express or implied, is made with respect to such information. Terms of sale or lease and availability are subject to change or withdrawal without notice.

NEWMARK