

SHADY GROVE ENTERPRISE PARK

8595 - 8687 Grovemont Cir
Gaithersburg, MD 20877

Proudly Owned & Managed By:



Leasing Information:
301.304.8300

Ethan Bernardi **Nathan Bortnick**
301.304.8397 301.304.8392
ebernardi@lpc.com nbortnick@lpc.com

Lincoln

1101 Wootton Pkwy
Suite 410
Rockville, MD 20854

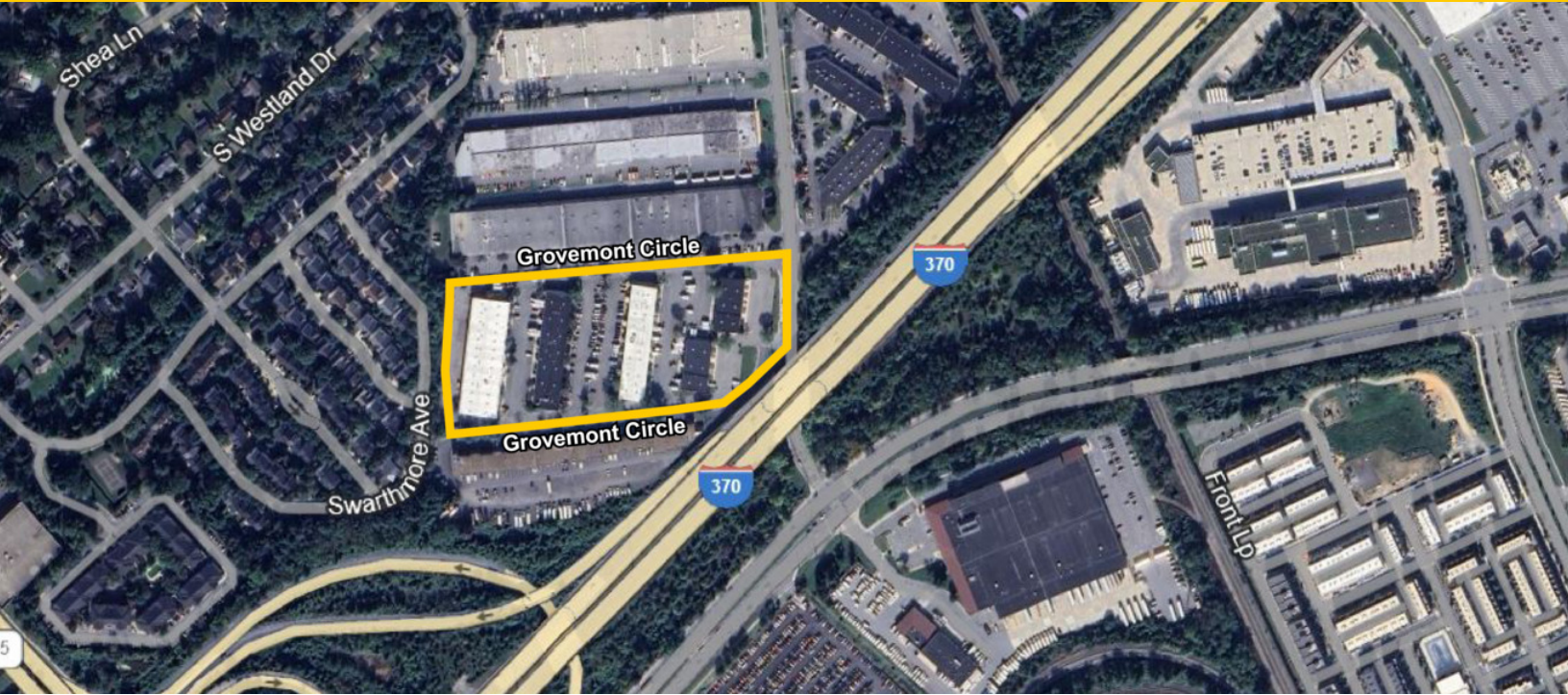
www.lpc.com

SHADY GROVE ENTERPRISE PARK

Flex / Warehouse For Lease

4,500 - 7,090 SF

8595 - 8687 Grovemont Cir | Gaithersburg, MD



Property Highlights

- 125,000 SF, 5 building complex (A-E)
- Flex/warehouse space availability
- Superior access via I-270, I-370 & ICC
- Dock and drive-in loading
- Locally owned and managed

Availabilities

- | |
|---------------------------------|
| 8595 Grovemont Cir (Building C) |
| 8601 Grovemont Cir (Building C) |
| 8625 Grovemont Cir (Building C) |
| 8687 Grovemont Cir (Building D) |

SF

- | |
|----------|
| 7,090 SF |
| 6,000 SF |
| 4,500 SF |
| 6,000 SF |

Ethan Bernardi **Nathan Bortnick**

301.304.8397

301.304.8392

ebernardi@lpc.com

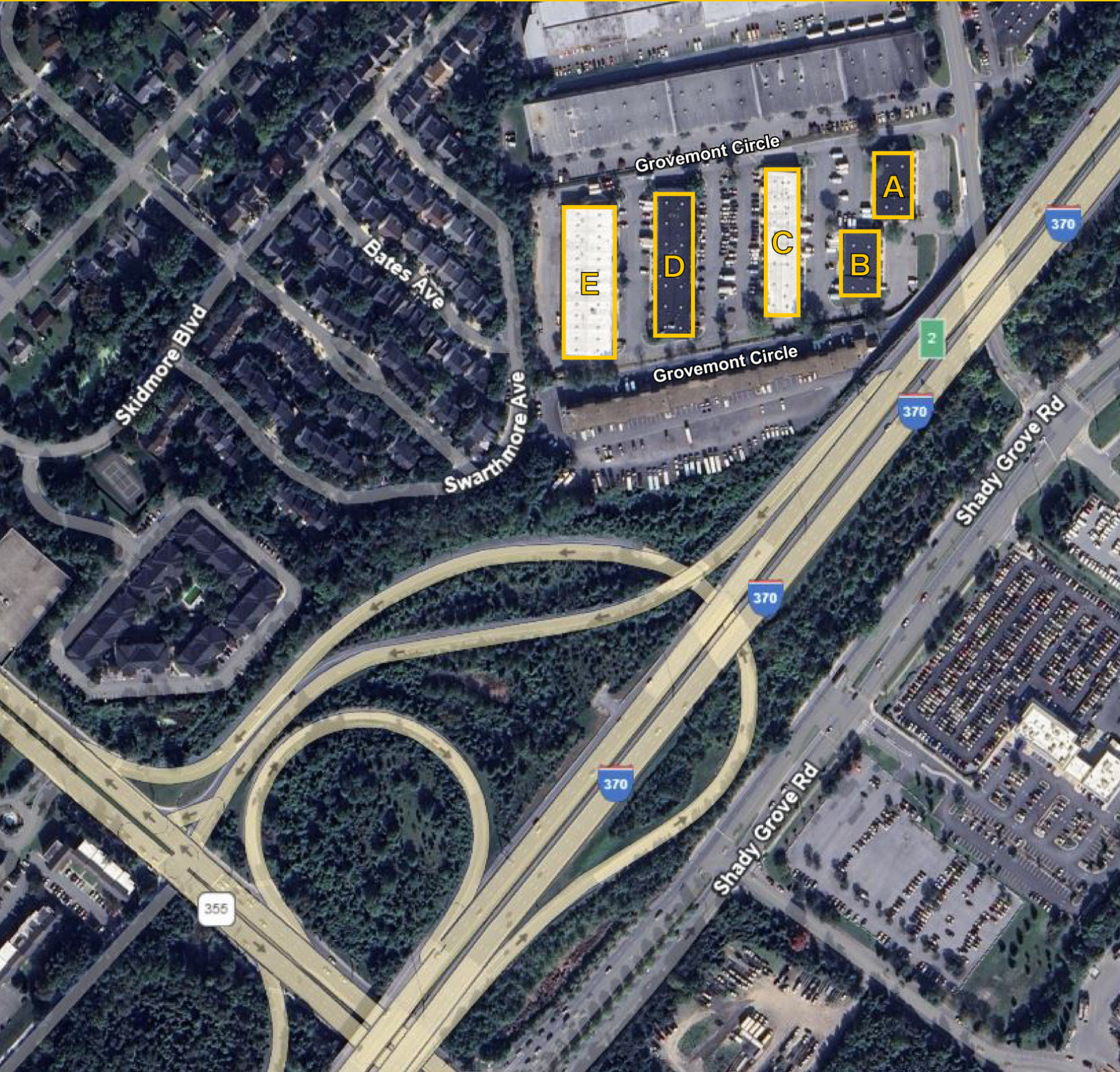
nbortnick@lpc.com

Lincoln

SHADY GROVE ENTERPRISE PARK

Shady Grove Aerial

8595 - 8687 Grovemont Cir | Gaithersburg, MD 20877



Ethan Bernardi Nathan Bortnick

301.304.8397

301.304.8392

ebernardi@lpc.com

nbortnick@lpc.com

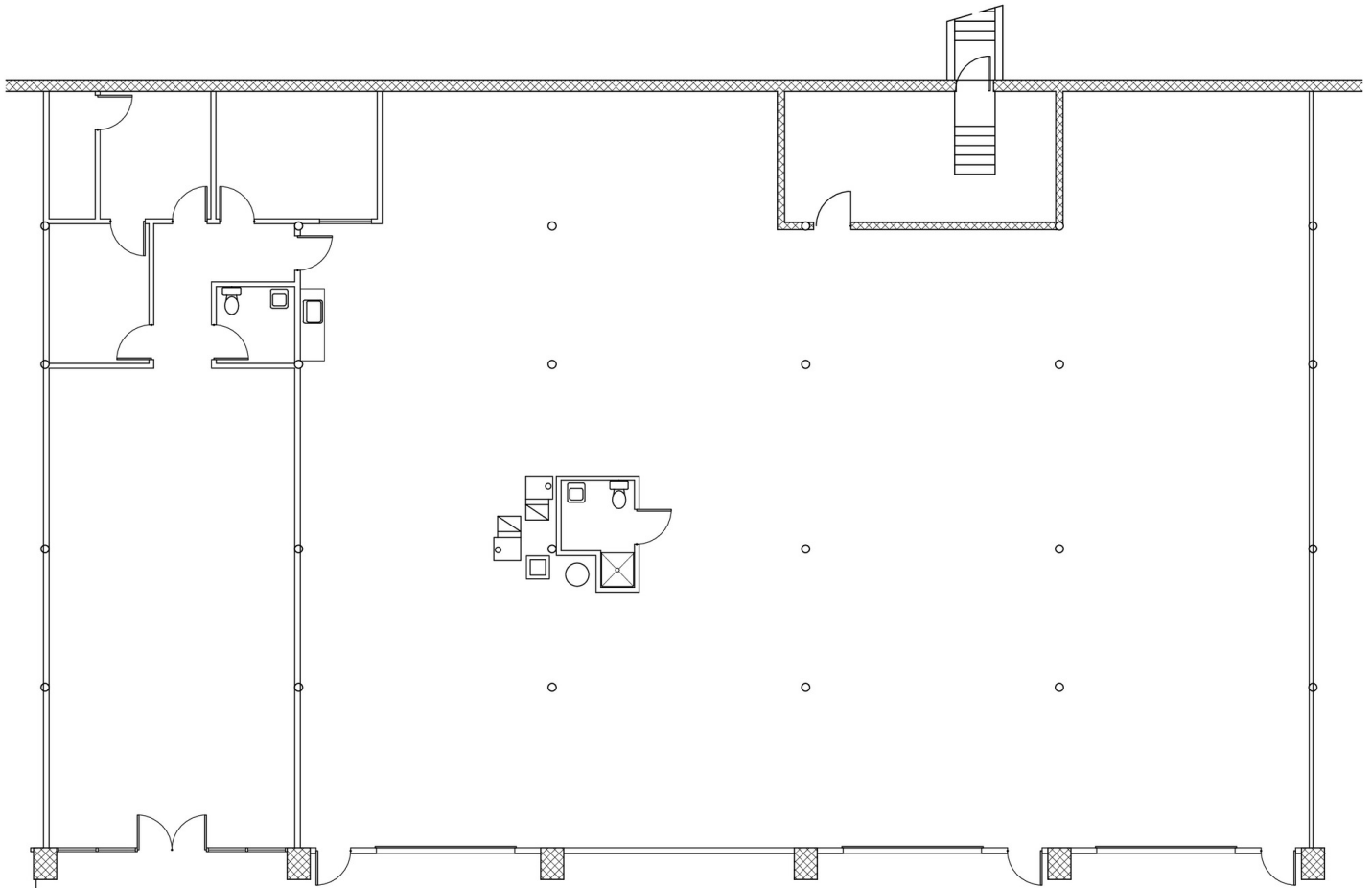
Lincoln

SHADY GROVE ENTERPRISE PARK

8595 Grovemont Cir (Building C)

7,090 SF

8595 - 8687 Grovemont Cir | Gaithersburg, MD 20877



Suite	Size	Description
8595 Grovemont Cir (Building C)	7,090 SF	Conditioned throughout Drive-in access

Ethan Bernardi **Nathan Bortnick**

301.304.8397

301.304.8392

ebernardi@lpc.com

nbortnick@lpc.com

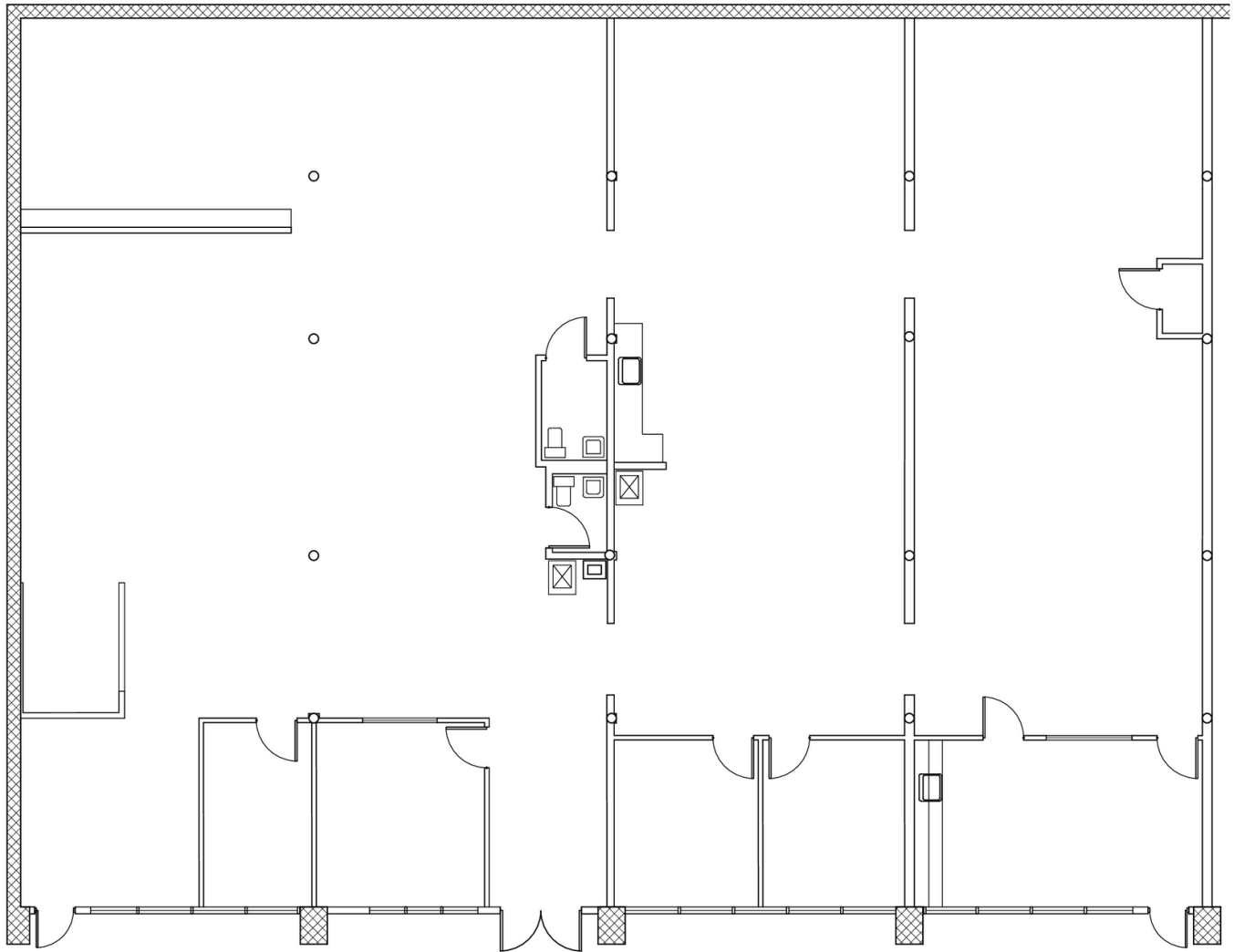
Lincoln

SHADY GROVE ENTERPRISE PARK

8601 Grovemont Cir (Building C)

6,000 SF

8595 - 8687 Grovemont Cir | Gaithersburg, MD 20877



Suite	Size	Description
8601 Grovemont Cir (Building C)	6,000 SF	Conditioned throughout Drive-in access

Ethan Bernardi Nathan Bortnick

301.304.8397

301.304.8392

ebernardi@lpc.com

nbortnick@lpc.com

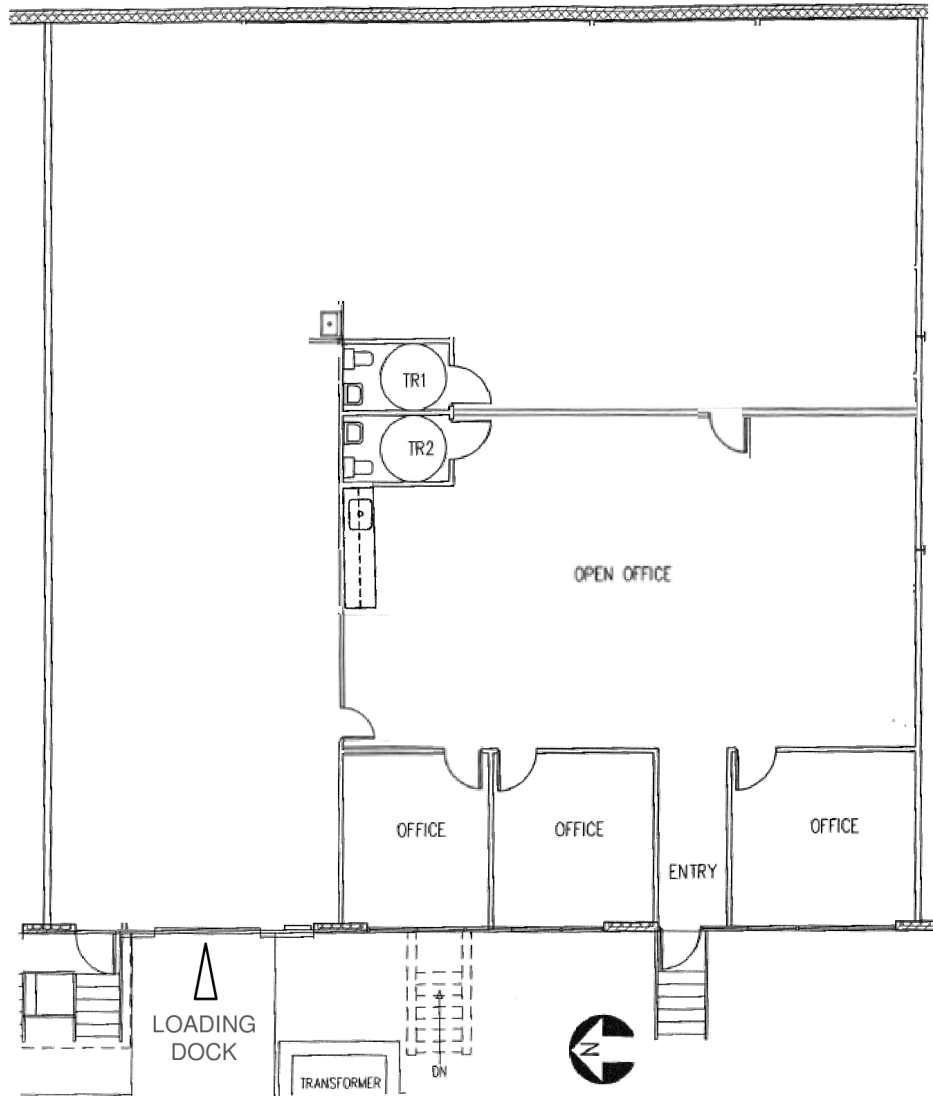
Lincoln

SHADY GROVE ENTERPRISE PARK

8625 Grovemont Cir (Building C)

4,500 SF

8595 - 8687 Grovemont Cir | Gaithersburg, MD 20877



Suite	Size	Description
8625 Grovemont Cir (Building C)	4,500 SF	Conditioned throughout Loading dock access

Ethan Bernardi Nathan Bortnick

301.304.8397

301.304.8392

ebernardi@lpc.com

nbortnick@lpc.com

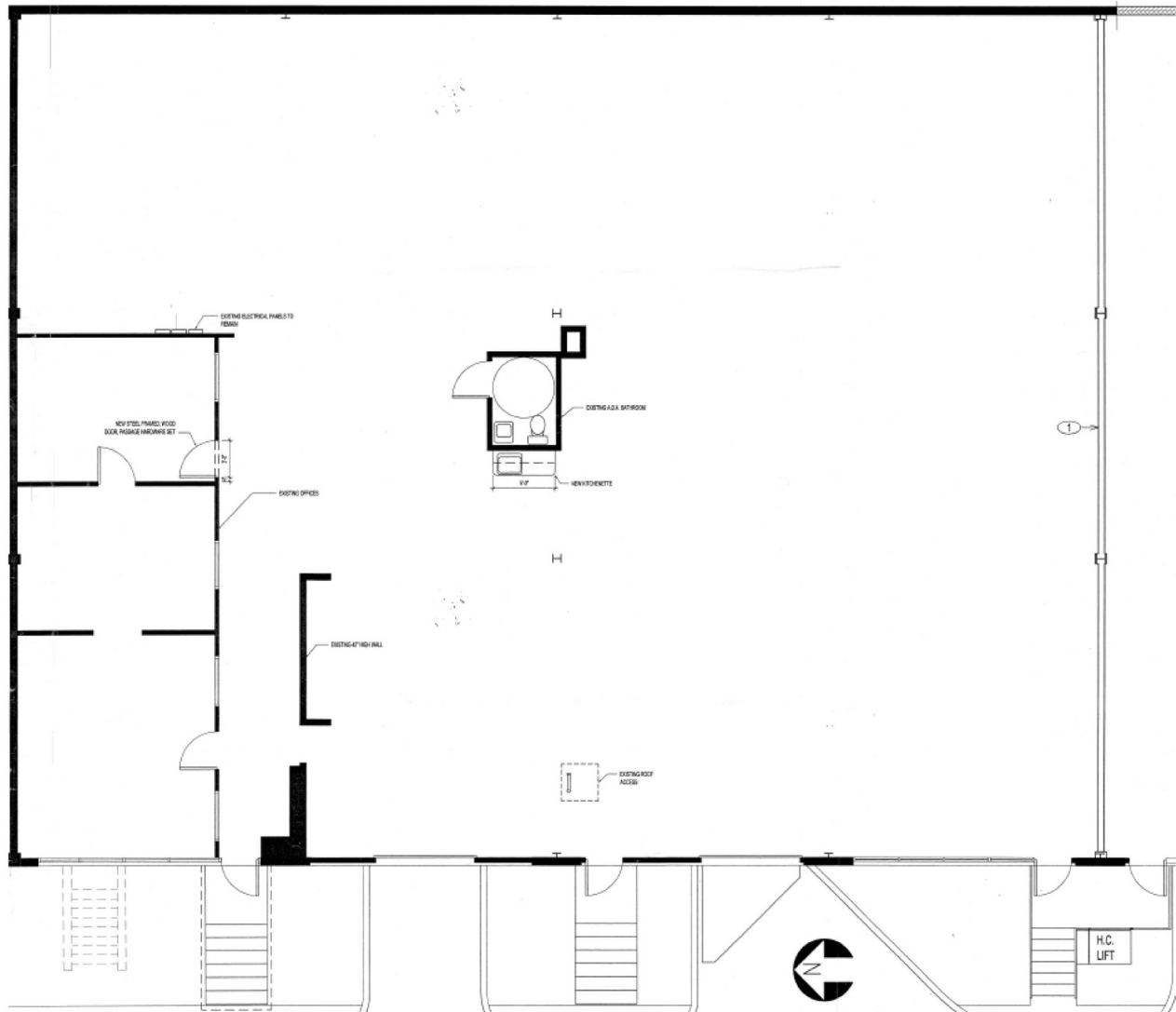
Lincoln

SHADY GROVE ENTERPRISE PARK

8687 Grovemont Cir (Building D)

6,000 SF

8595 - 8687 Grovemont Cir | Gaithersburg, MD 20877



Suite	Size	Description
8687 Grovemont Cir (Building D)	6,000 SF	Conditioned throughout Loading dock access

Ethan Bernardi Nathan Bortnick

301.304.8397

301.304.8392

ebernardi@lpc.com

nbortnick@lpc.com

Lincoln



SHADY GROVE ENTERPRISE PARK

Leasing Information:
301.304.8300

Ethan Bernardi
301.304.8397
ebernard@lpc.com

Nathan Bortnick
301.304.8392
nbortnick@lpc.com

Lincoln

1101 Wootton Pkwy
Suite 410
Rockville, MD 20854

www.lpc.com