

FOR LEASE



Downtown Office Space

301 E Liberty Street in Ann Arbor, Michigan



Jim Chaconas, CCIM
734 994 3100
annarbor@colliers.com

Colliers Ann Arbor
1955 Pauline Blvd., Suite 400
Ann Arbor, MI
colliersannarbor.com





FOR LEASE

1,178 – 6,493 SF of Office Space Available

PROPERTY HIGHLIGHTS

- 1,178-6,493 SF Available
- Professional Class A Office Suites Available over 6 Floors with Outdoor Balconies
- Central Downtown Ann Arbor Location at the Corner of W Liberty St and S 5th Ave with a Stunning High-End Formal Entry and Dramatic Views of the Big House and Downtown
- Secure Mobile Phone Access Entry at Exterior Doors and Elevators
- Each Suite contains Private Offices, Walls of Windows Overlooking Downtown, Conference Rooms , Restrooms and Open Workspaces
- Locally Owned and Professional Managed - See our [Testimonials Page!](#)
- On Site Underground Parking Available with Freight Elevator Access. Close to Municipal Parking Garages. Walk to Local Restaurants, Businesses and Retail
- \$20.00 - \$30.00 Per SF Modified Gross – Load Factor TBD



FOR LEASE

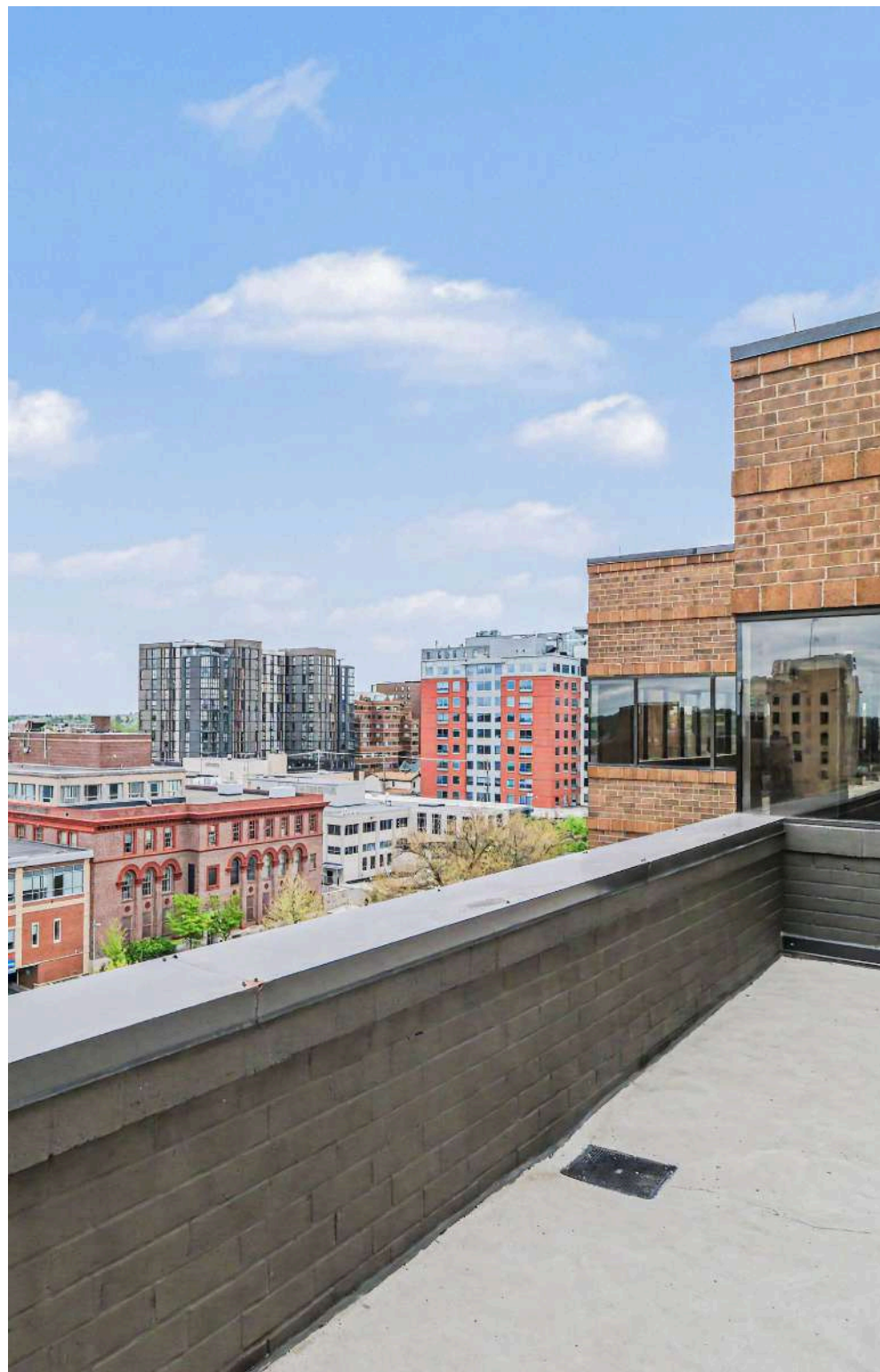
1,178 – 6,493 of Office Space Available

AVAILABLE SUITES

20,466 SF of Office Space Available

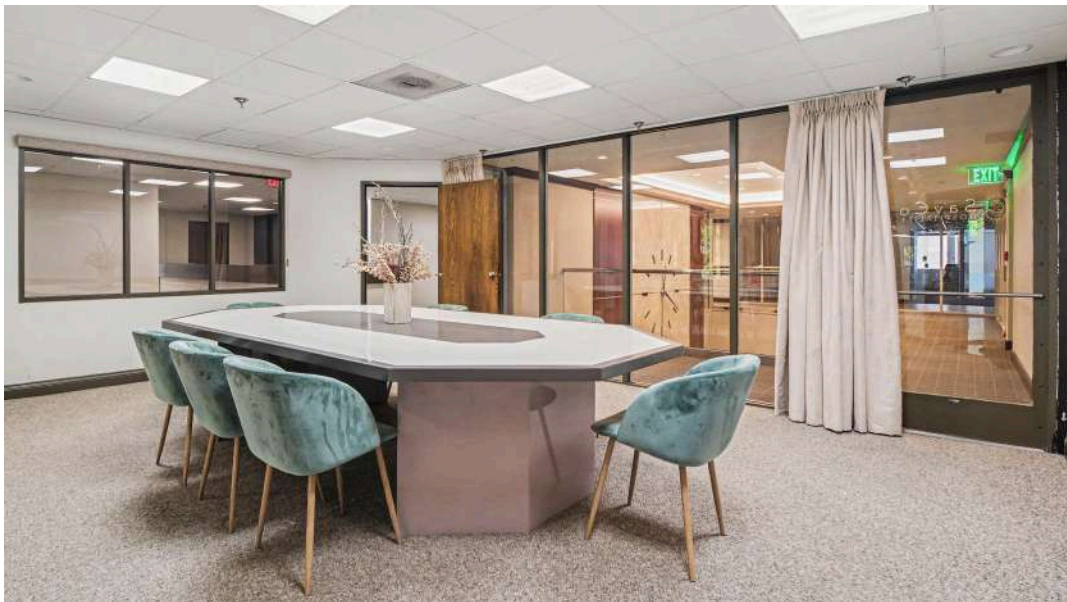
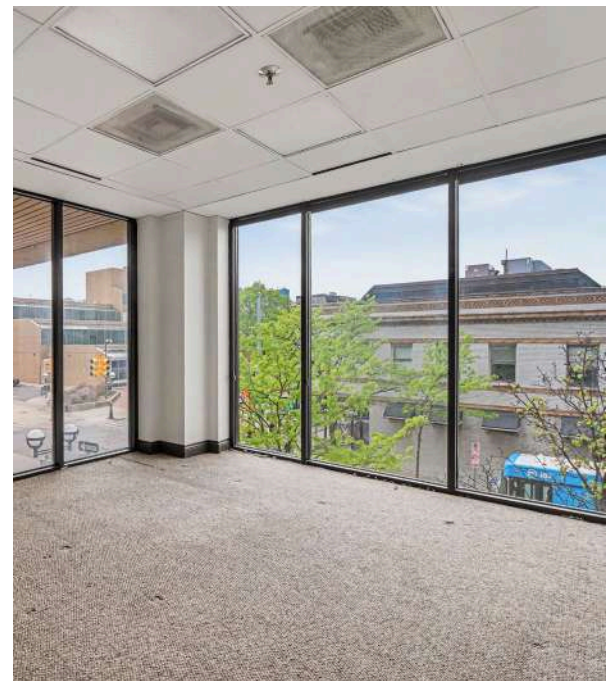
Suite	SF	Lease Rate/SF
120	1,998	\$30.00
150	4,448	\$20.00
200	3,785	\$30.00
290	1,178	\$30.00
500	6,493	\$30.00
690	2,574	\$30.00

Lease Type: Modified Gross - prorated share of gas, electricity, water/sewer and common area maintenance



A LANDLORD KNOWN FOR EXCEPTIONAL CARE — BACKED BY REAL TENANT FEEDBACK

- *"...it's been a pleasure working with the both of you and the guys they are awesome."*
- *"...thank you for the couple of years that I have worked with you and again, my apologies if I came off rough at times and so appreciate you, your staff, Tim and the guys, they are amazing. They need to be recognized for their work."*
- *"...I just wanted to say thank you for always being so responsive, helpful, and thoughtful over the years. You (and the whole Dahlmann staff) made working in this building such a pleasure, and I'll always remember that."*
- *"I would like to thank you and your team for providing outstanding services to Mathematica. It was a pleasure working with you and your team."*
- *"Thanks again Linda, you're always on top of everything! You're always that way which is awesome for us as were mostly in the dark. Thank you sooooo much for everything."*
- *"I want you to know how much we have appreciated you, Susan and the Dahlmann's for being such good landlords."*
- *"First just want to say thank you for the prompt response and engineer / building maintenance crew Steve and Dave are amazing, they are truly taking care of things...thank you."*
- *"...we are truly grateful for the amazing work that the crew has been doing."*
- *"Your company is a PLEASURE to work with."*
- *"Thanks for your help and all the Dahlmann staff. All have been very helpful and respectful without fail."*
- *"Linda thanks for being so responsive in helping us. I had a chance to see Dennis Dahlmann last night at the building and was sure to let him know how pleased we were in as to the responsiveness of his team members. Thank you."*
- *"Thank you so much Linda!! And please tell Dave thank you from us too! You're all the best!"*

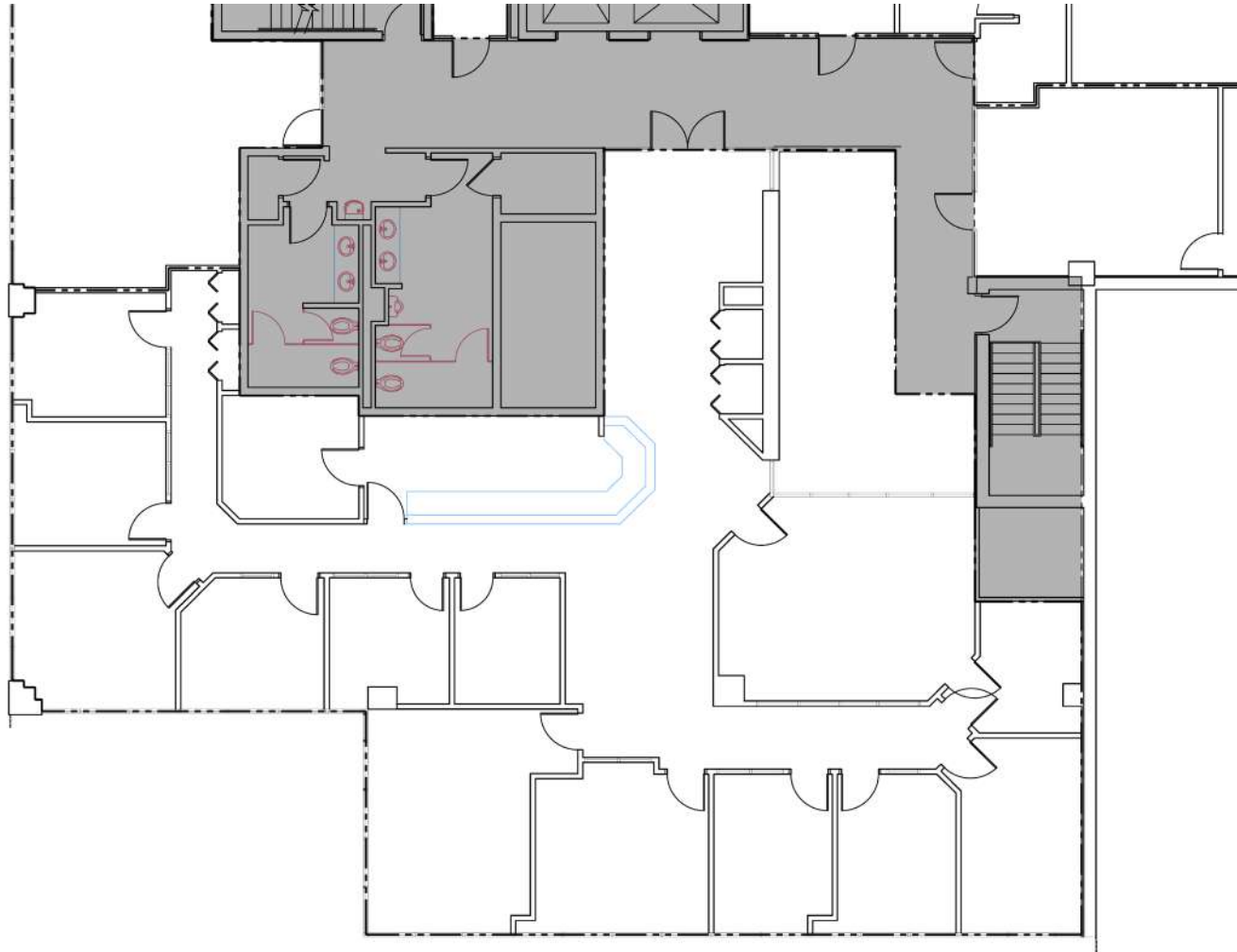


INTERIOR PHOTOS

Suite 200



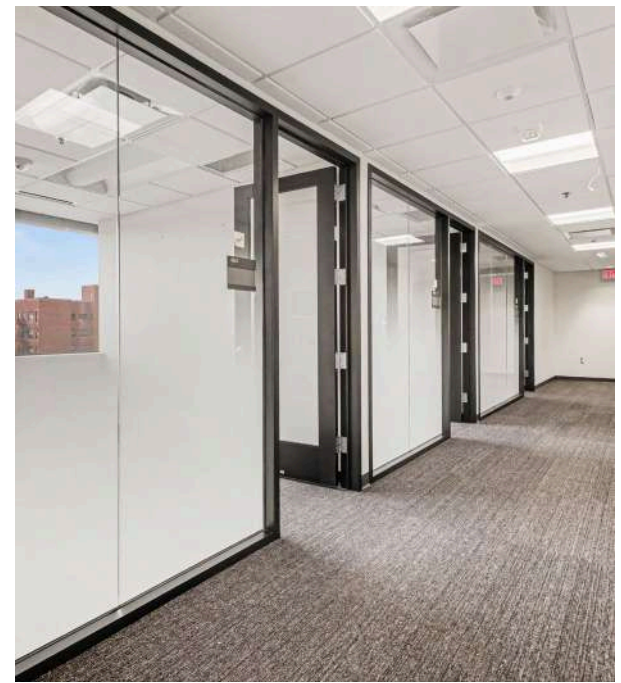
Suite 200 – 3,785 SF



FLOOR PLAN

1,178 – 6,493 of Office Space Available





INTERIOR PHOTOS

Suite 500 – 6,493 SF



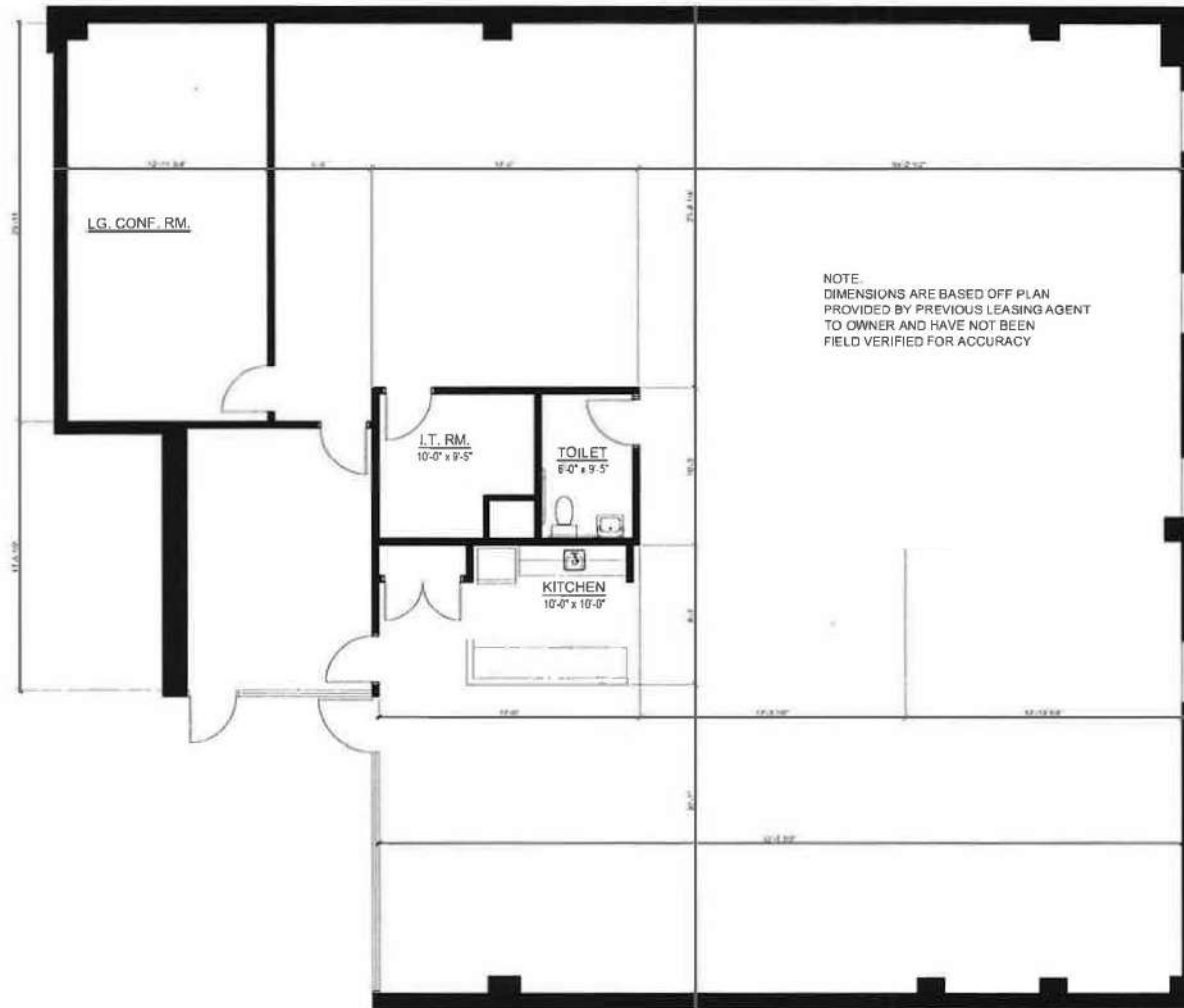


INTERIOR PHOTOS

Suite 150 - 4,448 SF



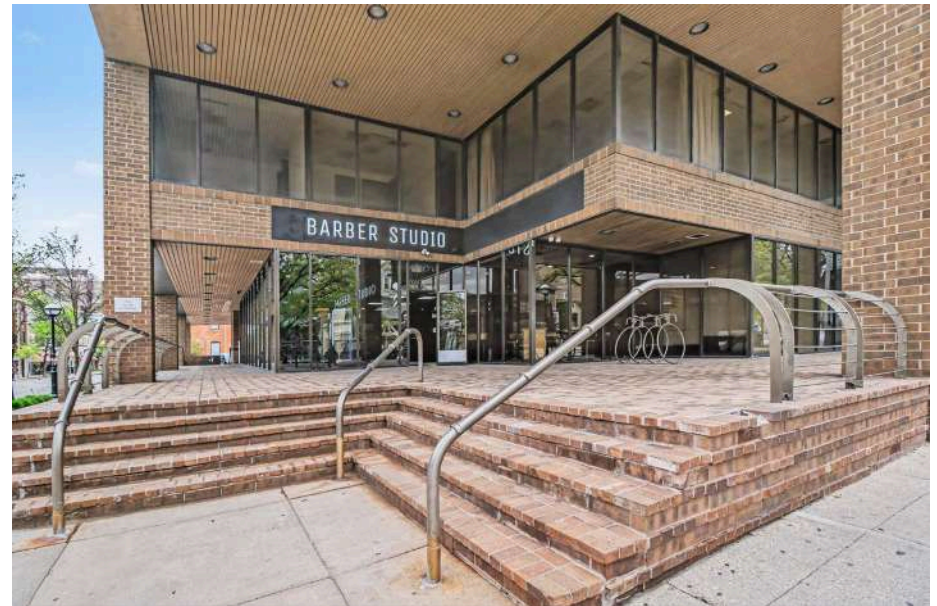
Suite 150 – 4,448 SF



FLOOR PLAN

1,178 – 6,493 of Office Space Available

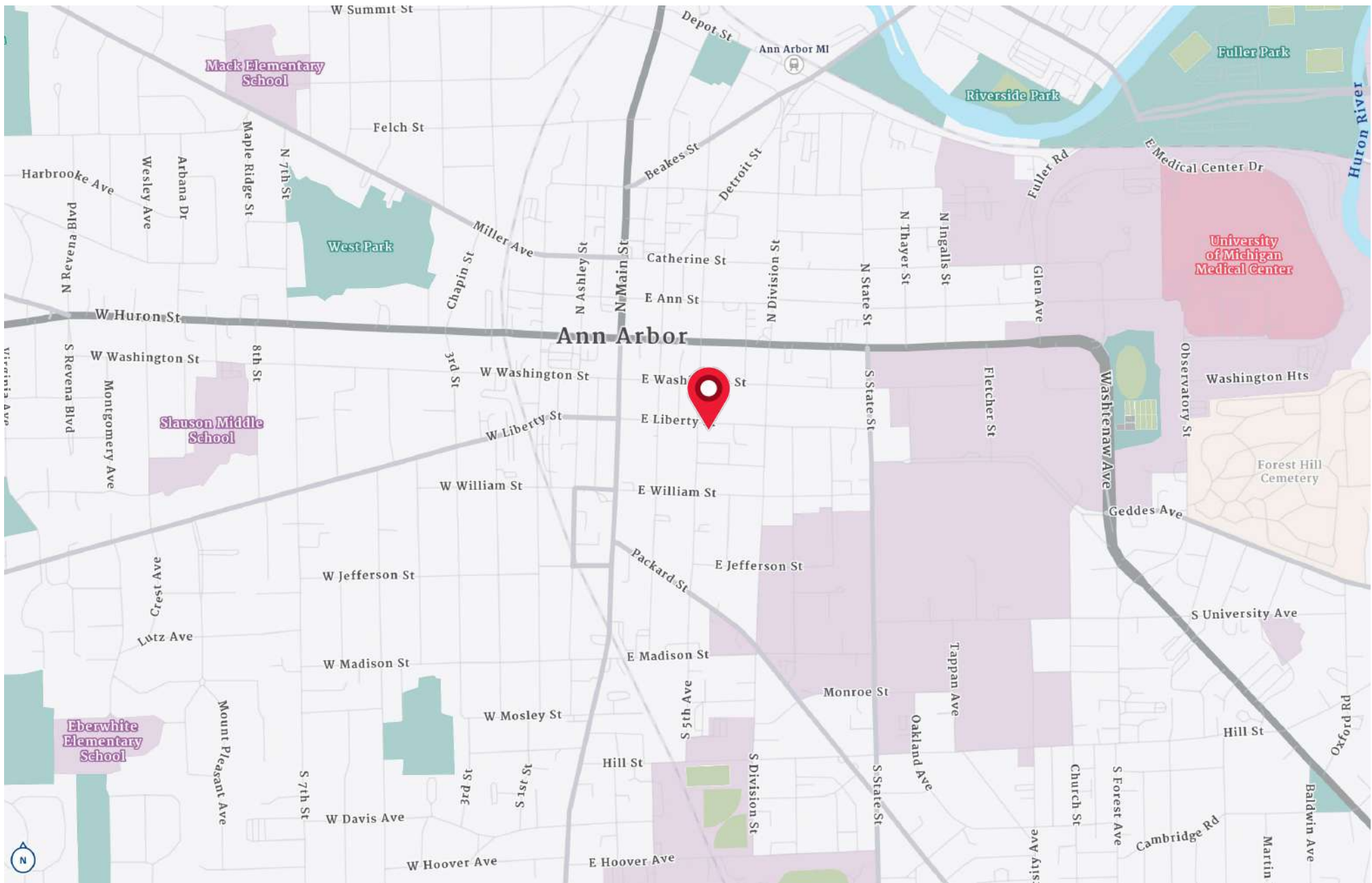




EXTERIOR PHOTOS

1,178 – 6,493 of Office Space Available





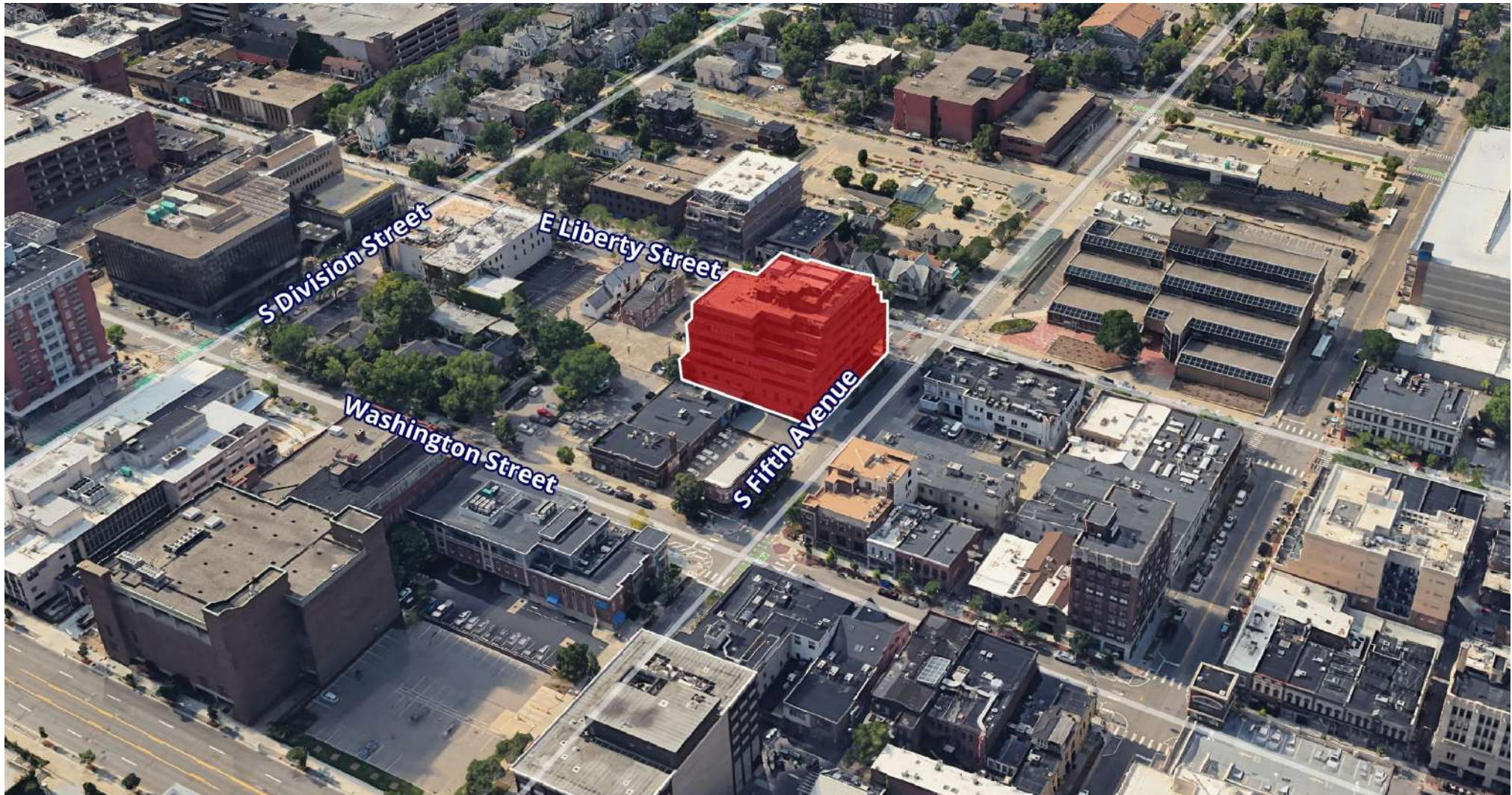
LOCATION MAP

1,178 – 6,493 of Office Space Available



PROPERTY AERIAL

1,178 – 6,493 of Office Space Available



Jim Chaconas, CCIM
734 769 5005
jim.chaconas@colliers.com



We have no reason to doubt the accuracy of information contained herein, but we cannot guarantee it. All information should be verified prior to purchase and/or lease.