

FOR LEASE

Greenbrier Point - 1403 Greenbrier Parkway | Chesapeake, VA 23320



For more information regarding this property, please contact:

Patrick L. Reynolds, CCIM

757 343 4666

patrickreynolds@naidominion.com

Matt Wilbricht

757 270 6956

mattwilbricht@naidominion.com



FOR LEASE

1403 Greenbrier Parkway | Chesapeake, VA 23320



MAIN LOBBY



SUITE 110 DRIVE-THRU



LOBBY – SUITE 110



FRONT ENTRANCE



ELECTRONIC MONUMENT SIGNAGE



FOR LEASE

1403 Greenbrier Parkway, Suite 215 | Chesapeake, VA 23320

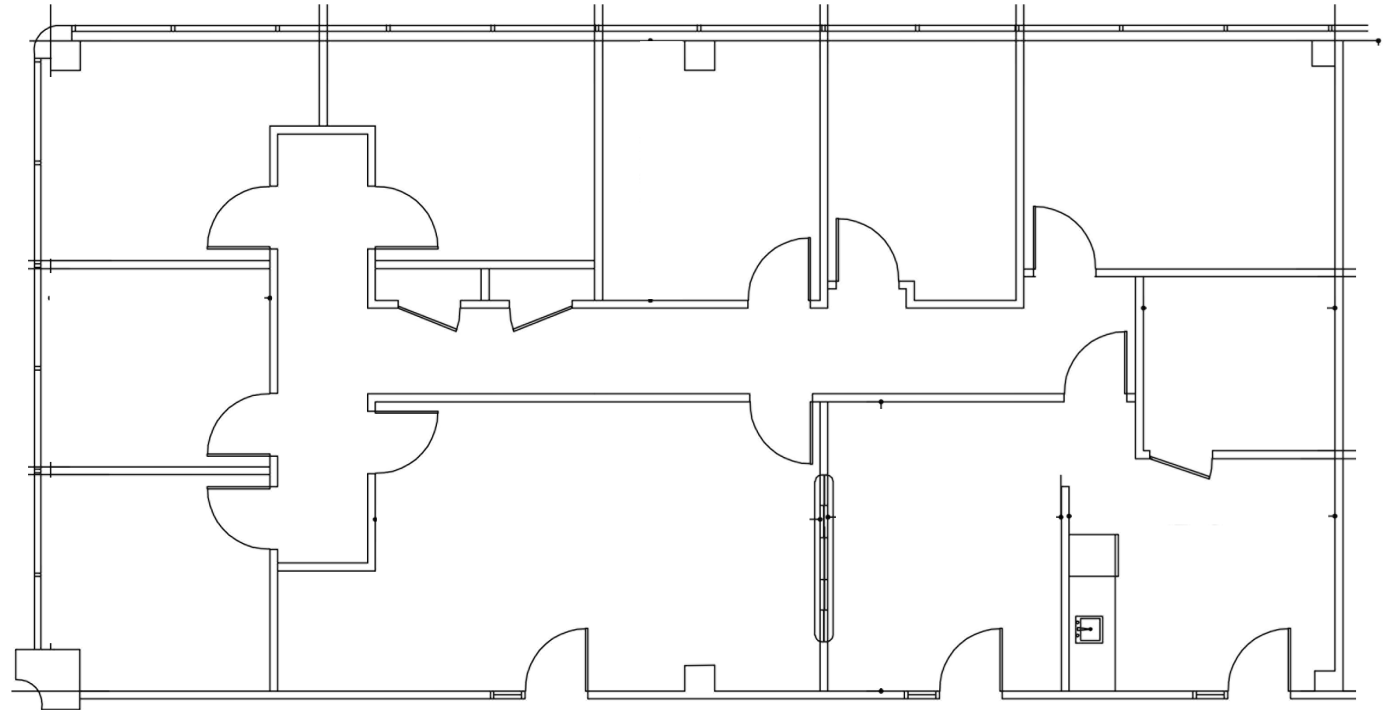
Suite: 215

Available: Immediately

2nd floor

2,173 RSF

\$22.50 psf



FLOOR PLAN



FRANCIS & REEVE
SPACEPLANNING | INTERIORS

AS-BUILT DRAWING

SUITE 215
GREENBRIER POINT
CHESAPEAKE, VIRGINIA

11.20.2024
S. REEVE



FOR LEASE

1403 Greenbrier Parkway, Suite 220 | Chesapeake, VA 23320

Suite: 220

Available: Immediately

2nd floor

1,065 RSF

\$22.50 psf

FLOOR PLAN

SECOND FLOOR PLAN





Suite: 225

Available: Immediately

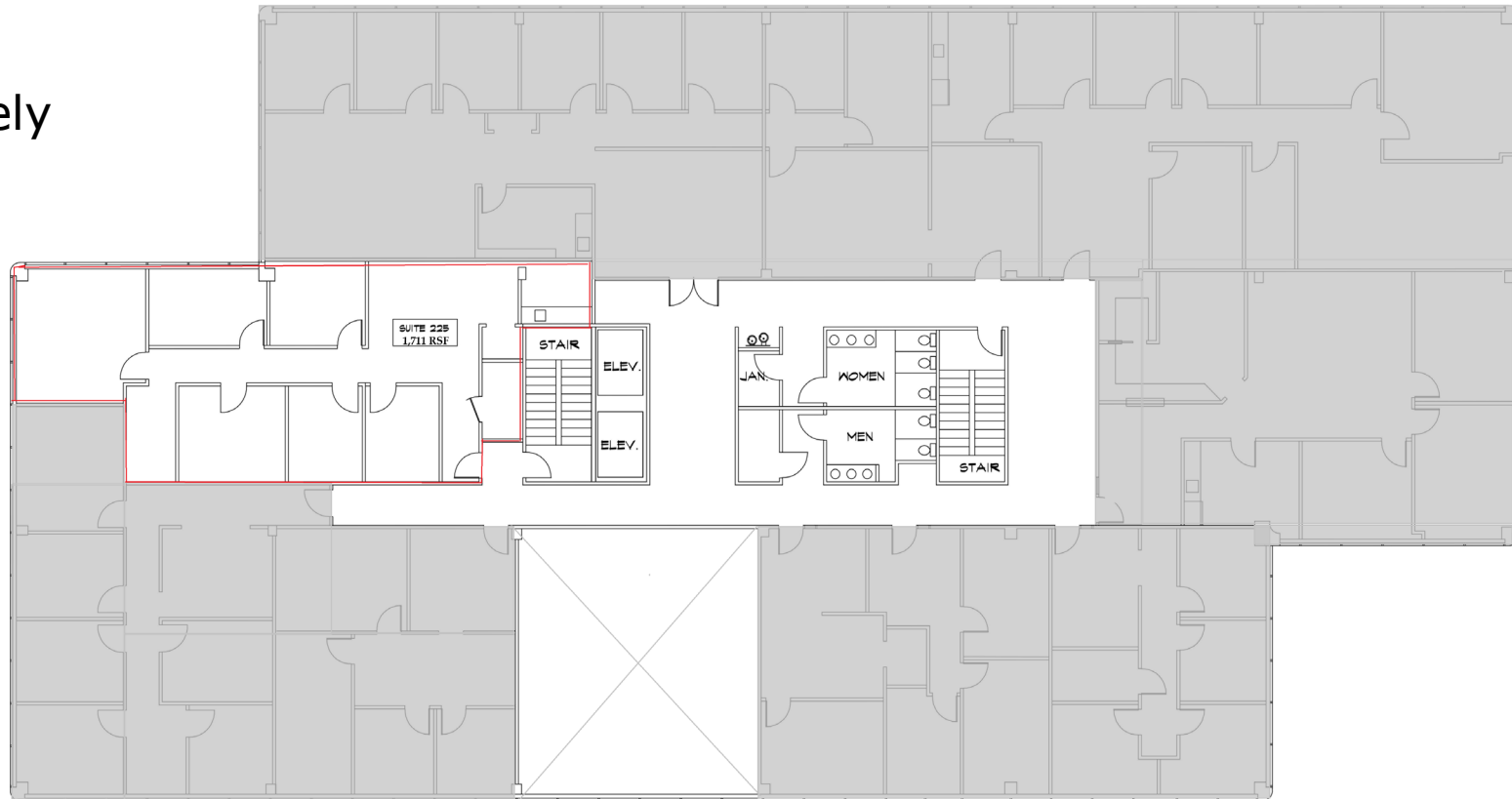
2nd floor

1,711 RSF

\$22.50 psf

FLOOR PLAN

SECOND FLOOR PLAN





FOR LEASE

1403 Greenbrier Parkway, Suite 230 | Chesapeake, VA 23320

Suite: 230

Available: Immediately

2nd floor

1,447 RSF

\$22.50 psf

FLOOR PLAN

SECOND FLOOR PLAN





Suite: 235

Available: Immediately

2nd floor

4,223 RSF

\$22.50 psf

FLOOR PLAN

SECOND FLOOR PLAN

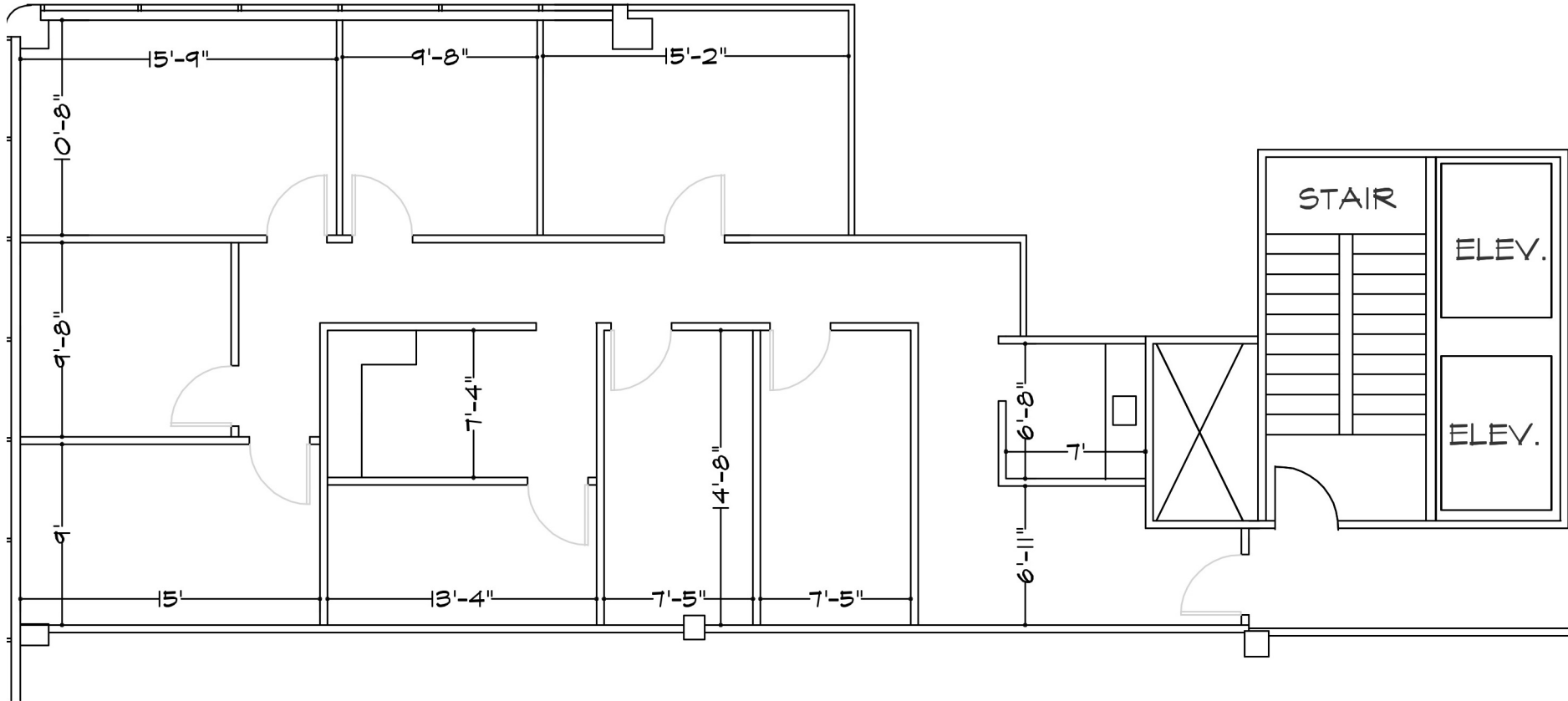




Suite: 430 Available: Immediately

Forth Floor 1,805 RSF Rate: \$22.50 psf

FLOOR PLAN





FOR LEASE

1403 Greenbrier Parkway, Suite 500 | Chesapeake, VA 23320

Suite: 500

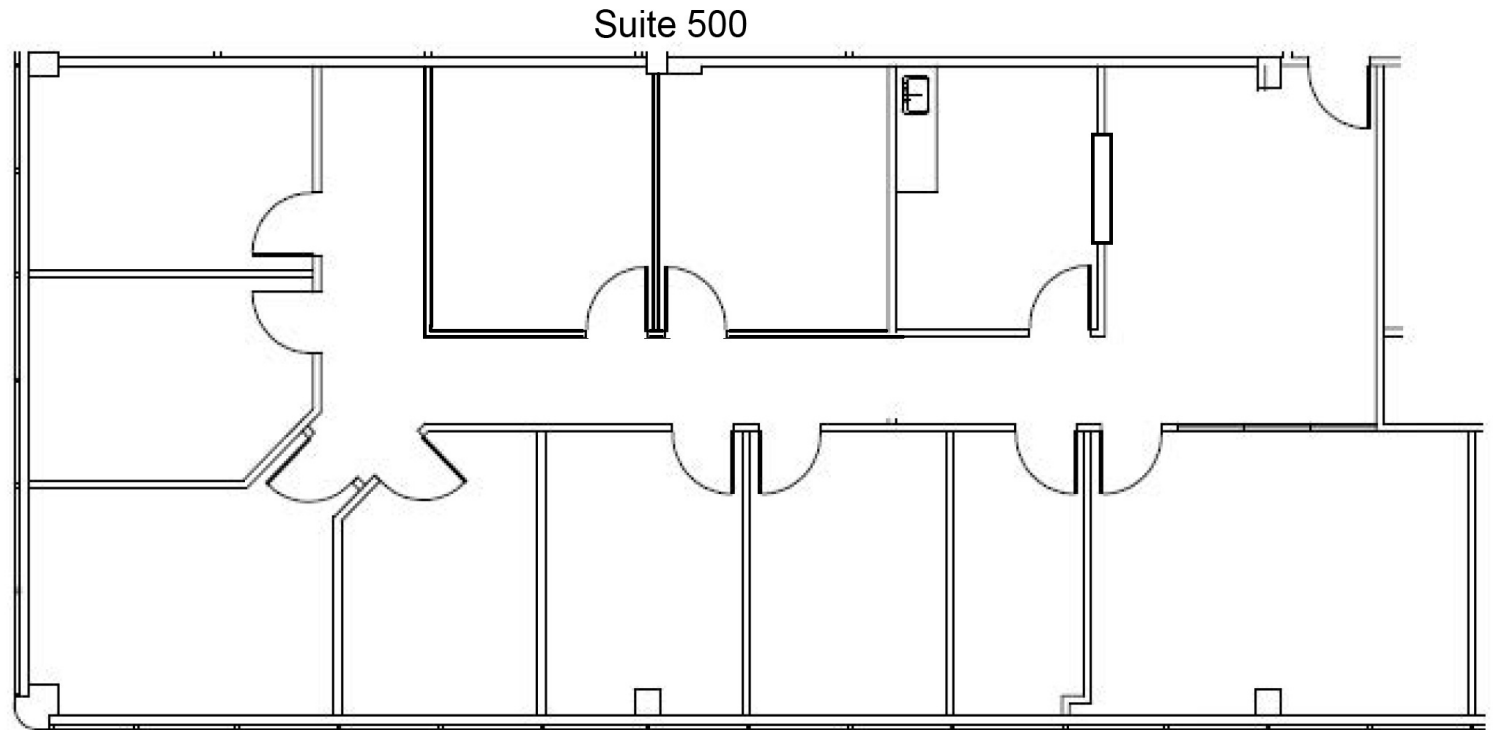
Available: Immediately

Fifth Floor

2,438 RSF

\$22.50 psf

FLOOR PLAN



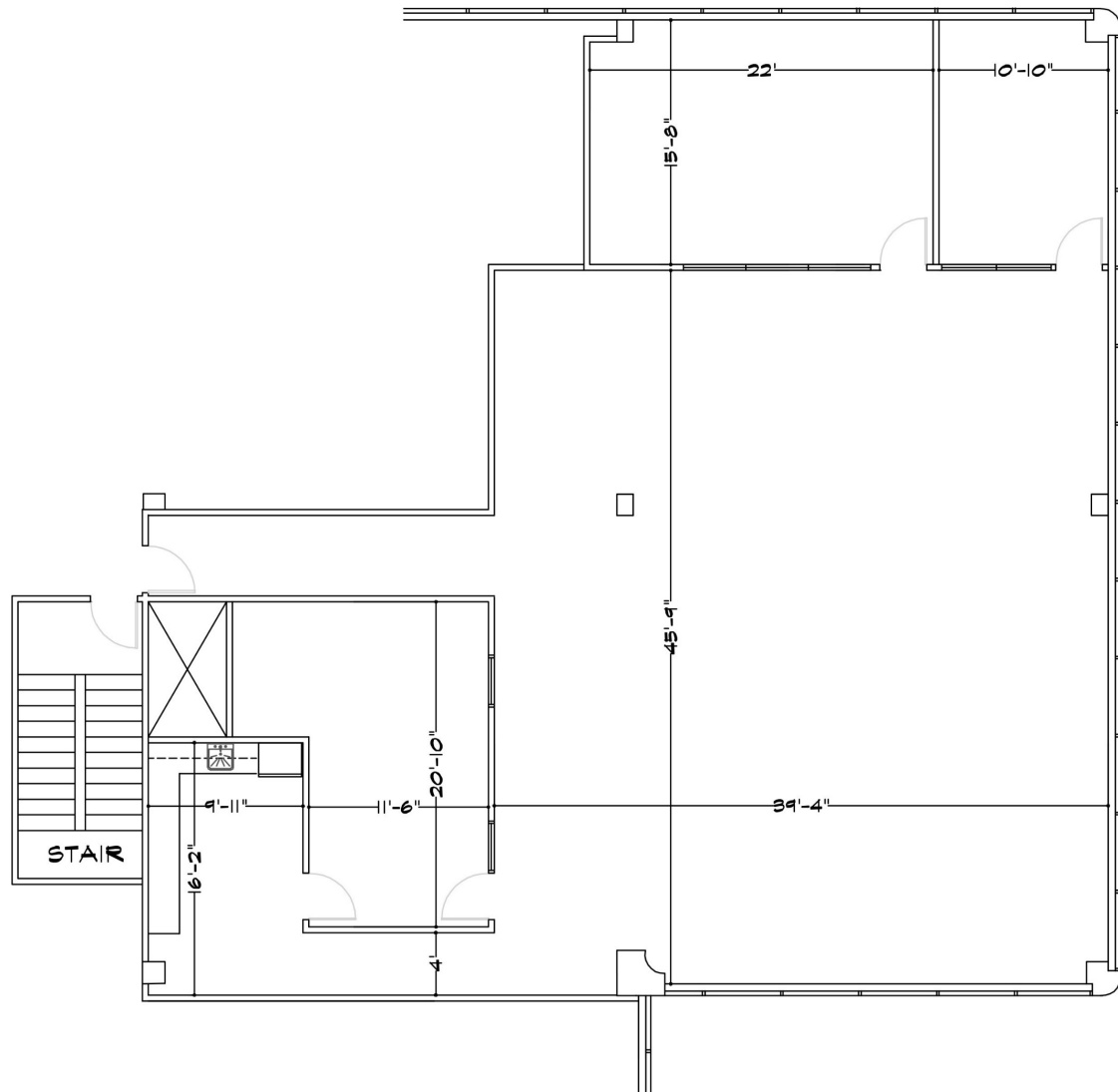
Suite: 550

Available: Immediately

Fifth Floor

3,482 RSF

\$22.50 psf



FLOOR PLAN

SUITE 550 AS-BUILT DRAWING 3,482 RSF

1403 GREENBRIER PARKWAY
GREENBRIER POINT
CHESAPEAKE, VIRGINIA



FOR LEASE

1403 Greenbrier Parkway | Chesapeake, VA 23220

SITE PLAN

STRIPED PARKING
SPACE TABLE



Total Spaces: 375
Ratio: 5.2 per 1,000



FOR LEASE

1402 Greenbrier Parkway | Chesapeake, VA 23320



Freestanding Building



Professional Maintenance and Management



Great Access to Major Arterials









Proximity to Various Amenities



Prominent Building and monument Signage available



375 Parking Spaces

DISTANCE TO   NORFOLK INTERNATIONAL AIRPORT - 15 MINS I-64 HIGHWAY ACCESS - 1 MIN  DOWNTOWN NORFOLK - 10 MINS  NEAREST HOSPITAL - 7 MINS  NEAREST AMENITIES - 1 MIN  URGENT CARE - 3 MINS

FOR LEASE

1403 Greenbrier Parkway | Chesapeake, VA 23320

SIGNIFICANT OPERATIONS IN GREEN BRIER

GENERAL DYNAMICS

MITSUBISHI

FirstData

CHESAPEAKE REGIONAL HEALTHCARE

VOLVO

SENTARA

COX



DOLLAR TREE

