

# 411 WEST 7200 SOUTH

MIDVALE, UT 84047



Investment Realty  
ADVISORS

## ELLIOT ABEL

Associate Broker  
435.485.7070  
elliott@iraut.com

## JOSEPH MILLS

Investment Sales  
801.971.2542  
joseph@iraut.com

## EVAN WRYE

Vice President of Commercial Leasing  
385.469.0920  
evan@iraut.com

1,800 SF of Office Space

## PROPERTY SUMMARY

**PROPERTY DESCRIPTION**

This is an excellent office building just off the 7200 S Exit with tremendous visibility! Offices are quiet and suited for Executive Professional Office. Located at 411 West and 7200 South Midvale, UT 84047. Clean & Classic Offices with a convenient location off I-15 with good parking and access. Affordable private executive offices.

**AVAILABLE SUITES**

Suite 303: This Expansive Unit features a reception area, 5 Private offices, a Conference room, ample storage, and a kitchenette with a counter, cabinets and a sink. 3rd floor office with great views. Elevator to 3rd floor. Available Now!

**OFFERING SUMMARY**

Lease Rate:	\$18/SF
Lease Type:	FSG
Number of Units:	1
Available SF:	1,800 SF
Total Building Size:	19,500 SF
Lot Size:	0.63 acres
Parking Ratio:	2/1,000
ADA Parking Stalls:	1
Total Parking Stalls:	45
ADA Complaint:	Yes
AADT:	33,885
Lease Term	1-5 Years
Available Date:	Now
NOI:	\$194,318.00

**ELLIOT ABEL**

Associate Broker  
435.485.7070  
elliott@iraut.com

**JOSEPH MILLS**

Investment Sales  
801.971.2542  
joseph@iraut.com

**EVAN WRYE**

Vice President of Commercial Leasing  
385.469.0920  
evan@iraut.com

Investment Realty Advisors  
411 W 7200 S, Suite 201, Midvale, UT 84047

411 W 7200 S MIDVALE, UT 84047

# SITE & AVAILABILITY



**ELLIOT ABEL**  
Associate Broker  
435.485.7070  
elliott@iraut.com

**JOSEPH MILLS**  
Investment Sales  
801.971.2542  
joseph@iraut.com

**EVAN WRYE**  
Vice President of Commercial Leasing  
385.469.0920  
evan@iraut.com

Investment Realty Advisors  
411 W 7200 S, Suite 201, Midvale, UT 84047

# SUITE 303 PHOTOS



**ELLIOT ABEL**  
Associate Broker  
435.485.7070  
elliott@iraut.com

**JOSEPH MILLS**  
Investment Sales  
801.971.2542  
joseph@iraut.com

**EVAN WRYE**  
Vice President of Commercial Leasing  
385.469.0920  
evan@iraut.com

Investment Realty Advisors  
411 W 7200 S, Suite 201, Midvale, UT 84047

# 411 W 7200 S Suite 303 W/ Conference

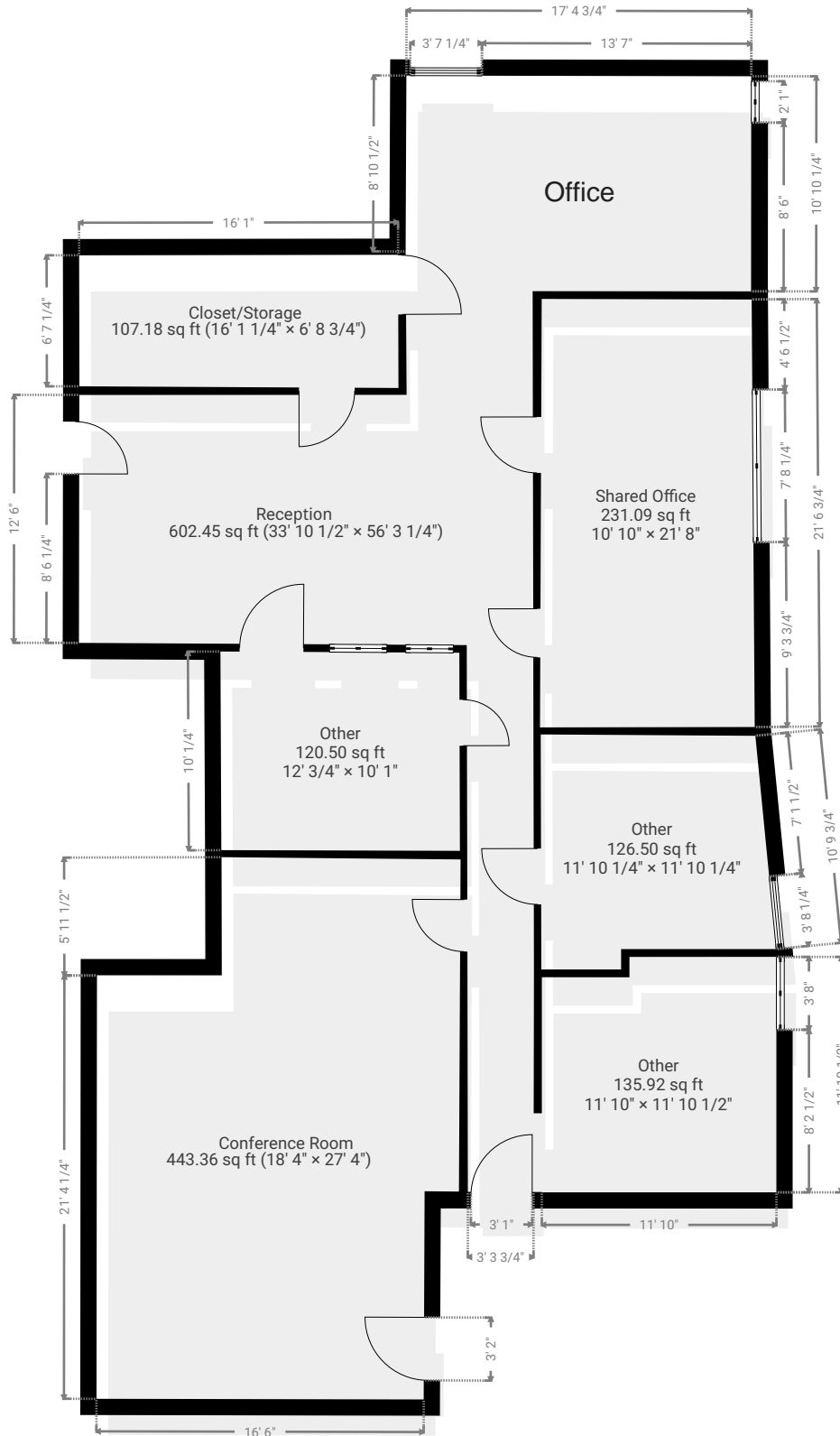


411 West 7200 South, 84047 Midvale, Utah, US  
TOTAL AREA: 2006.18 sq ft • LIVING AREA: 2006.18 sq ft • FLOORS: 1 • ROOMS: 7

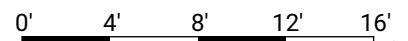
SUBMITTED BY Evan  
elliott@iraut.com

## ▼ 3rd Floor

TOTAL AREA: 2006.18 sq ft • LIVING AREA: 2006.18 sq ft • ROOMS: 7



THIS FLOOR PLAN IS PROVIDED WITHOUT WARRANTY OF ANY KIND. SENSOPIA DISCLAIMS ANY WARRANTY INCLUDING, WITHOUT LIMITATION, SATISFACTORY QUALITY OR ACCURACY OF DIMENSIONS.



# LOCATION MAP



Google Imagery ©2025 Airbus, Landsat / Copernicus, Maxar Technologies, USDA/FPAC/GEO, Vexcel Imaging US, Inc.

**ELLIOT ABEL**  
Associate Broker  
435.485.7070  
elliott@iraut.com

**JOSEPH MILLS**  
Investment Sales  
801.971.2542  
joseph@iraut.com

**EVAN WRYE**  
Vice President of Commercial Leasing  
385.469.0920  
evan@iraut.com

Investment Realty Advisors  
411 W 7200 S, Suite 201, Midvale, UT 84047