

250  
HIGH



ALLIED



Prestige and excellence  
within office space





OFFICE

2018



# The cornerstone mixed use development on High Street



New on-site security and reception desk



Building comprised of 150,000 SF of office space and residential units



A range of 10,350 - 54,172 SF of office space coming available



Potential signage opportunities facing High Street and Rich Street



Premium building design and luxury amenity set with indoor/outdoor workspace for Tenants and guests





## Attached parking for Tenants and guests

- Attached to the Columbus Commons garage located at the corner of Rich Street and Third Street
- Garage is owned by the CDDC and managed by LAZ Parking
- Ability to accommodate a parking ratio of at least 4/1,000 RSF
- Reserved and unreserved parking options available
- Located less than .5 mile to all major freeways through I-70







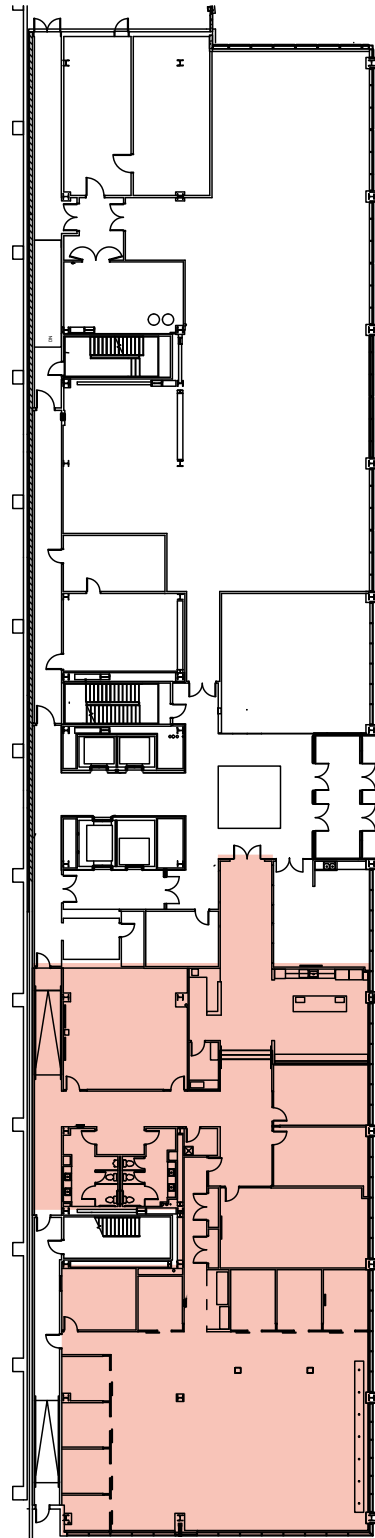
## Suite 100 - 11,106 SF

### Potential Availability

Rental Rate  
\$21.95 PSF NNN

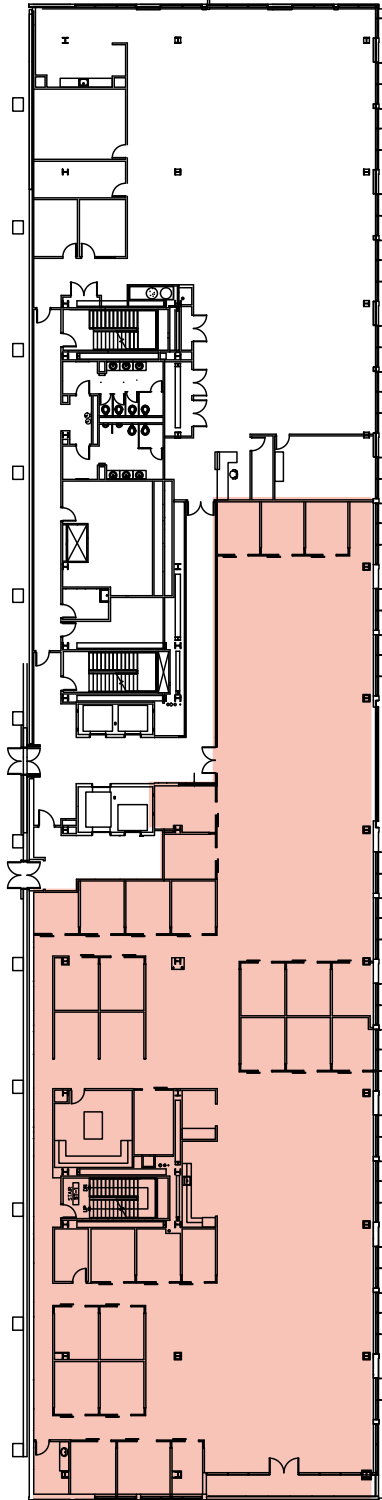
10,350 - 54,172 SF

Earlier Commencement possible  
depending on terms



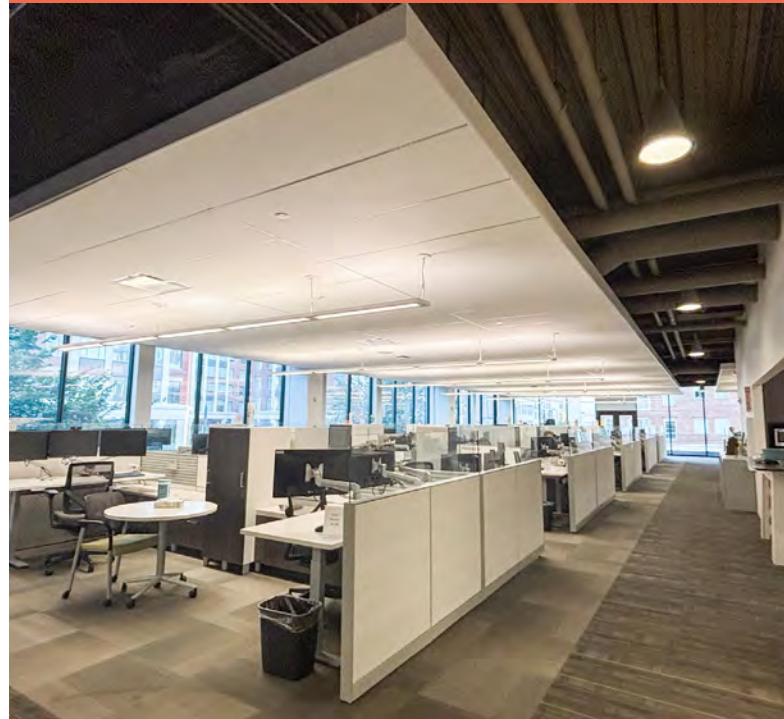
Scan QR Code or [click here](#) to view a 360-tour of Suite 100.

# Suite 200 - 16,234 SF



Both suites  
available for total  
of 27,340 SF

Available 10/1/26



Scan QR Code or [click here](#) to  
view a 360-tour of Suite 200.

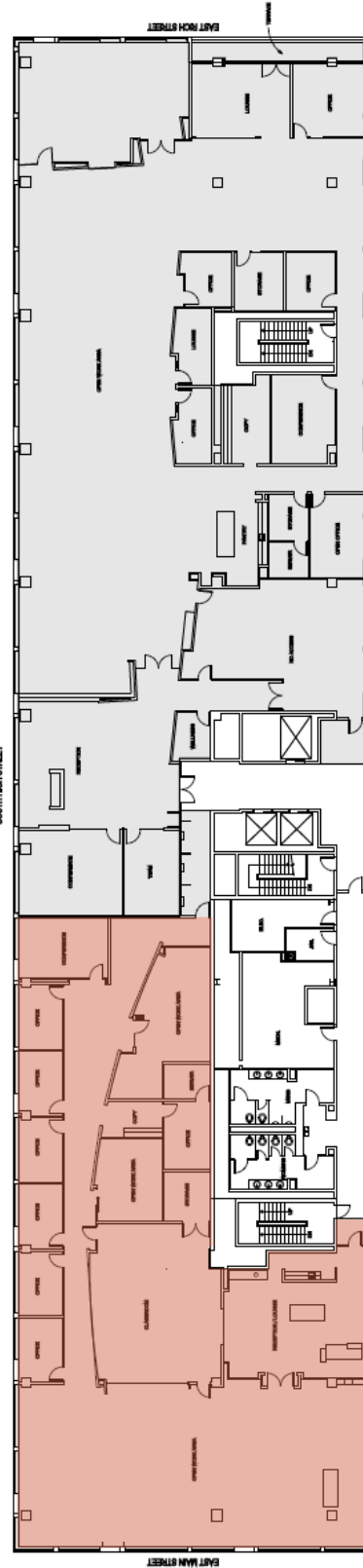
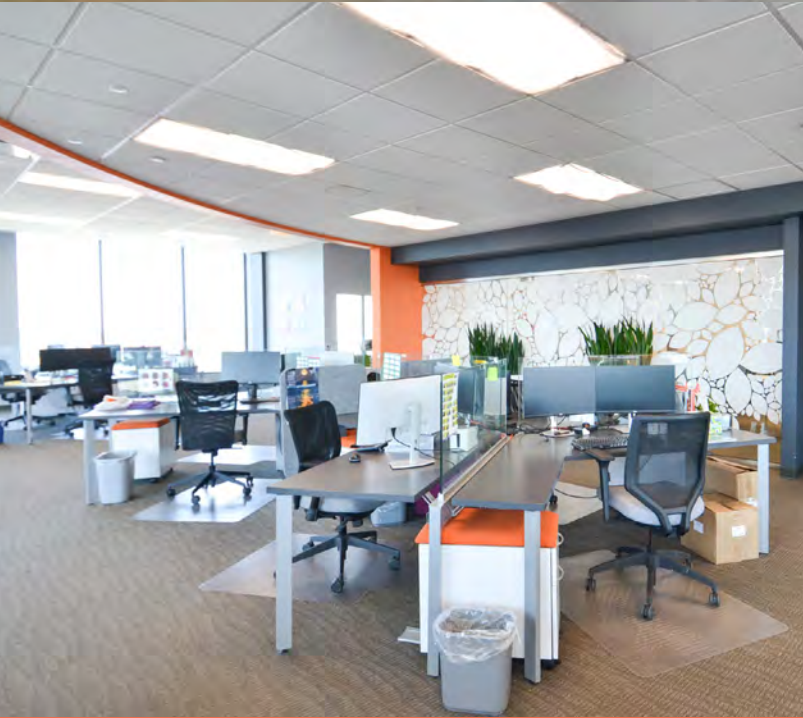




Full floors available  
with internal staircase -  
54,172 SF



# Suite 650 - 10,350 SF

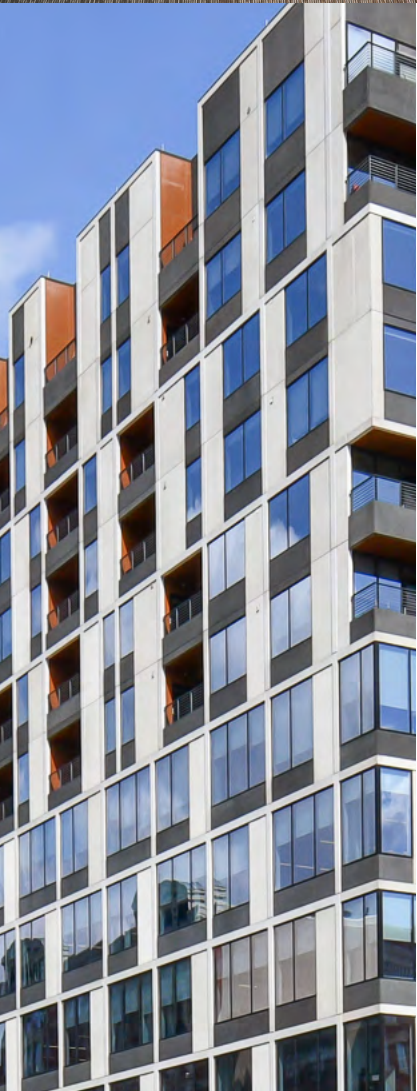


Available in  
July 2026



Scan QR Code or [click here](#) to view a 360-tour of Suite 650.





## Superior Amenity Set



Fitness Facility



Rooftop patio



Community Room



Attached Parking



Access to The  
Columbus Commons



Bike Rack  
and Storage





**DAN DUNSMOOR SIOR**

614 352 3556

[dan.dunsmoor@alliedre.com](mailto:dan.dunsmoor@alliedre.com)

**MICHELLE FUDE CCIM**

614 398 9292

[michelle.fude@alliedre.com](mailto:michelle.fude@alliedre.com)

**RYAN MCHUGH**

614 940 2978

[ryan.mchugh@alliedre.com](mailto:ryan.mchugh@alliedre.com)



**ALLIED**