

100 Reade Street

TRIBECA
NEW YORK, NY



NEWMARK

100 READE STREET

Property Details

Location

North block between Church Street and West Broadway

Approximate Size

Ground Floor 3,000 SF
Lower Level 3,000 SF
Total 6,000 SF

Frontage

37 FT on Reade Street

Term

Negotiable

Possession

Immediate

Site Status

Vacant - Formerly Mighty Minds and Muscles and Speak Out New York

Rent

Upon request

Neighbors

Serafina, Heyday, Pure Barre, Greenwich Jewelers, Forgione, Stella, Bureau Gallery, High Noon Gallery, and Reade Street Prep

Comments

6,000 SF of usable space

Lower Level is legal selling space

Ground Floor has two entrances

Space is Fully ADA compliant

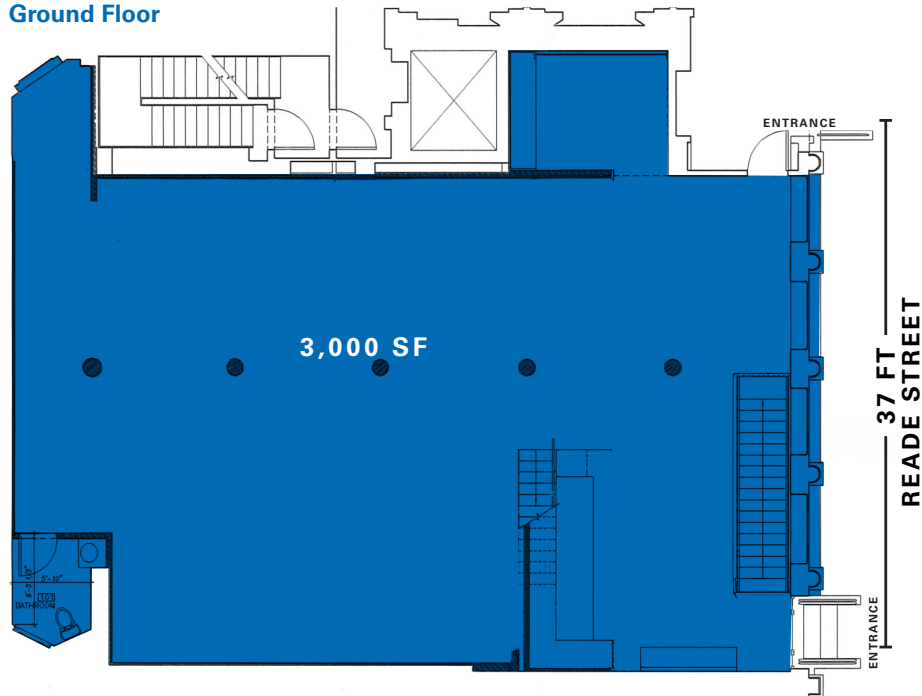
Tribeca's strongest tenant mix block consisting of high-end apparel, accessories, cosmetics, fitness and restaurants

Natural light in the rear of the space on each level

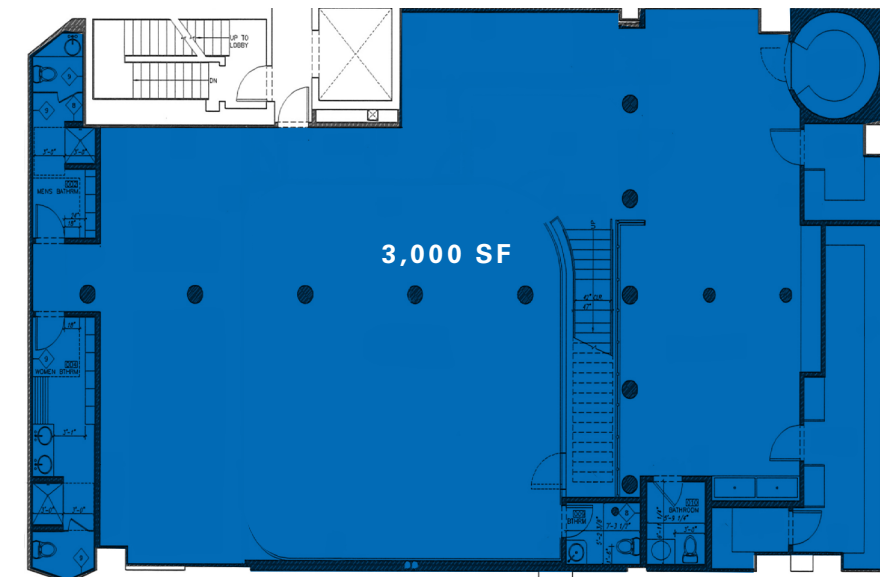
All uses accepted

In close proximity to the **1 2 3 4 5 A C E J Z R W** trains

Ground Floor



Lower Level



100 READE STREET



CONTACT

Ravi Idnani
 t 212-916-2938
 ravi.idnani@nmrk.com

Andrew Stern
 t 212-351-9353
 andrew.stern@nmrk.com
nmrk.com