

FOR LEASE | 401,067 SF CROSS DOCK

302 International Trade Pkwy

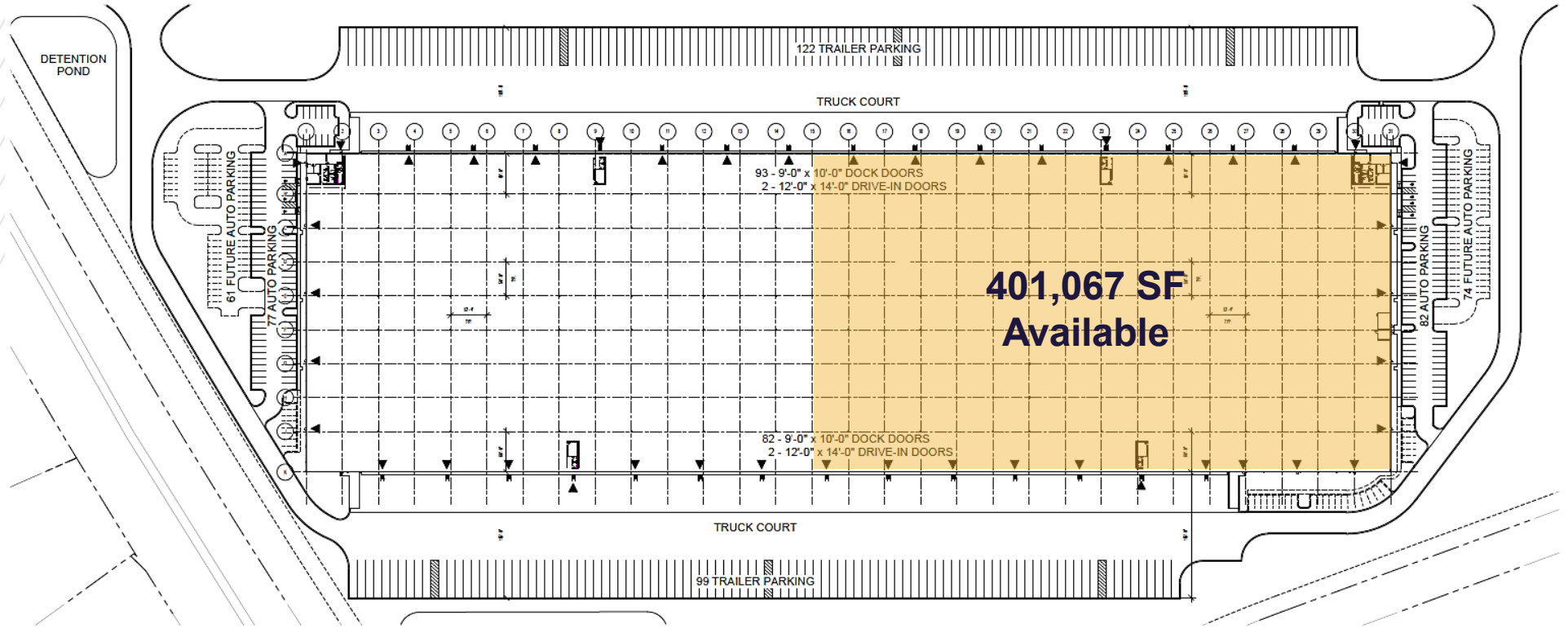
Savannah, GA 31407

Savannah River International Trade Park



302 International Trade Pkwy

Savannah, GA 31407



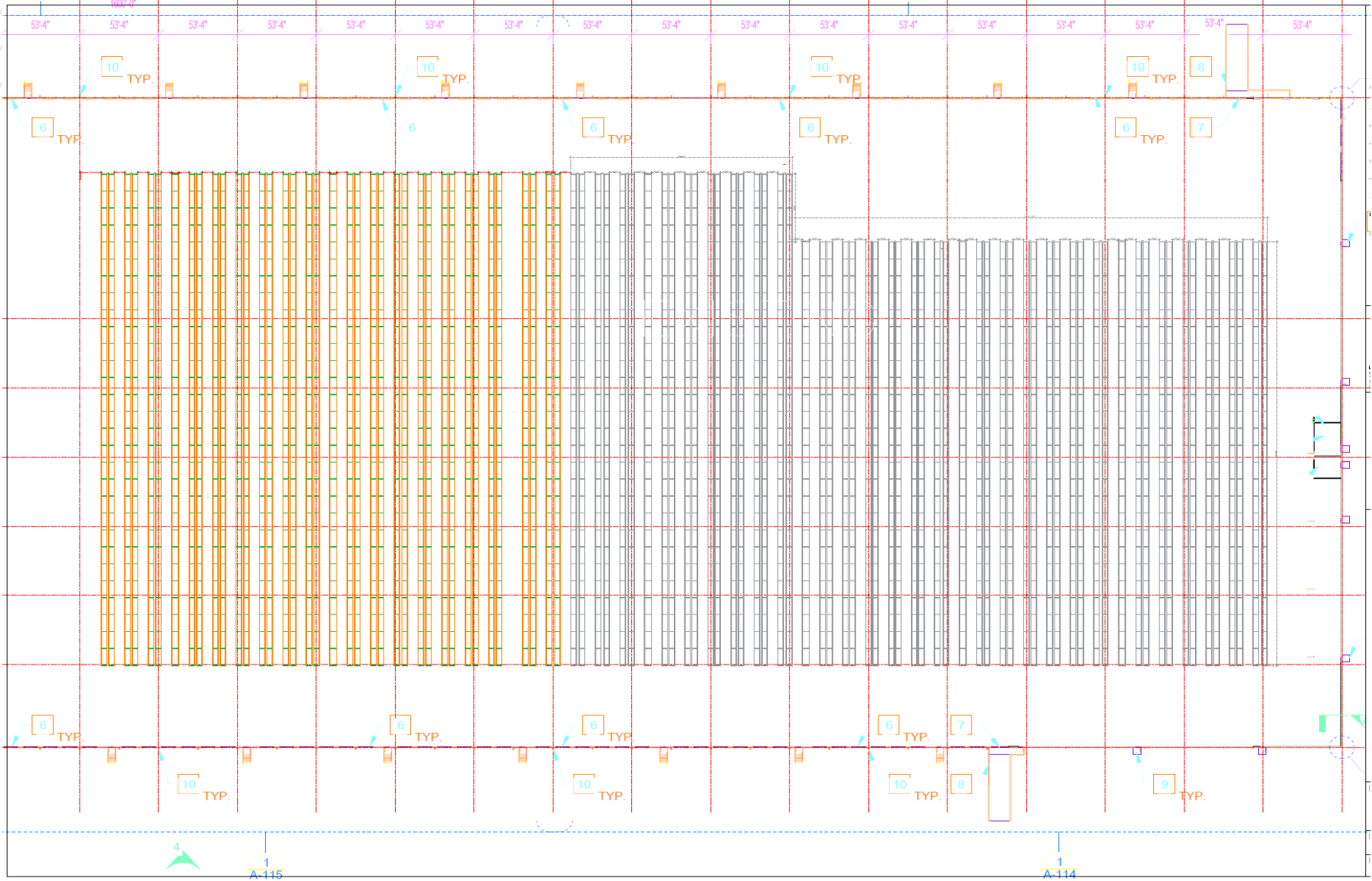
PROPERTY SPECS

| | | | |
|-----------------|--------------------|----------------|-------------------------|
| Building Size | 752,000 SF | Parking | 109 Trailer, 82 Auto |
| Space Available | 401,067 SF | Dock Doors | 91 (40,000 lb levelers) |
| Loading | Cross dock | Drive-in Doors | 2 (12' x 14') |
| Clear Height | 40' Clear | Column Spacing | 53' 4" x 50' |
| Office Area | ±3,770 SF Total | Building Depth | 470' |
| Year Built | 2019 | Sprinkler | ESFR |
| Construction | Concrete Tilt-wall | Power | 2,000A 277/480 V-3PH-4W |

302 International Trade Pkwy

Savannah, GA 31407

In-Place Racking Plan



302 International Trade Pkwy

Savannah, GA 31407



40' Clear

2 Drive-in Doors

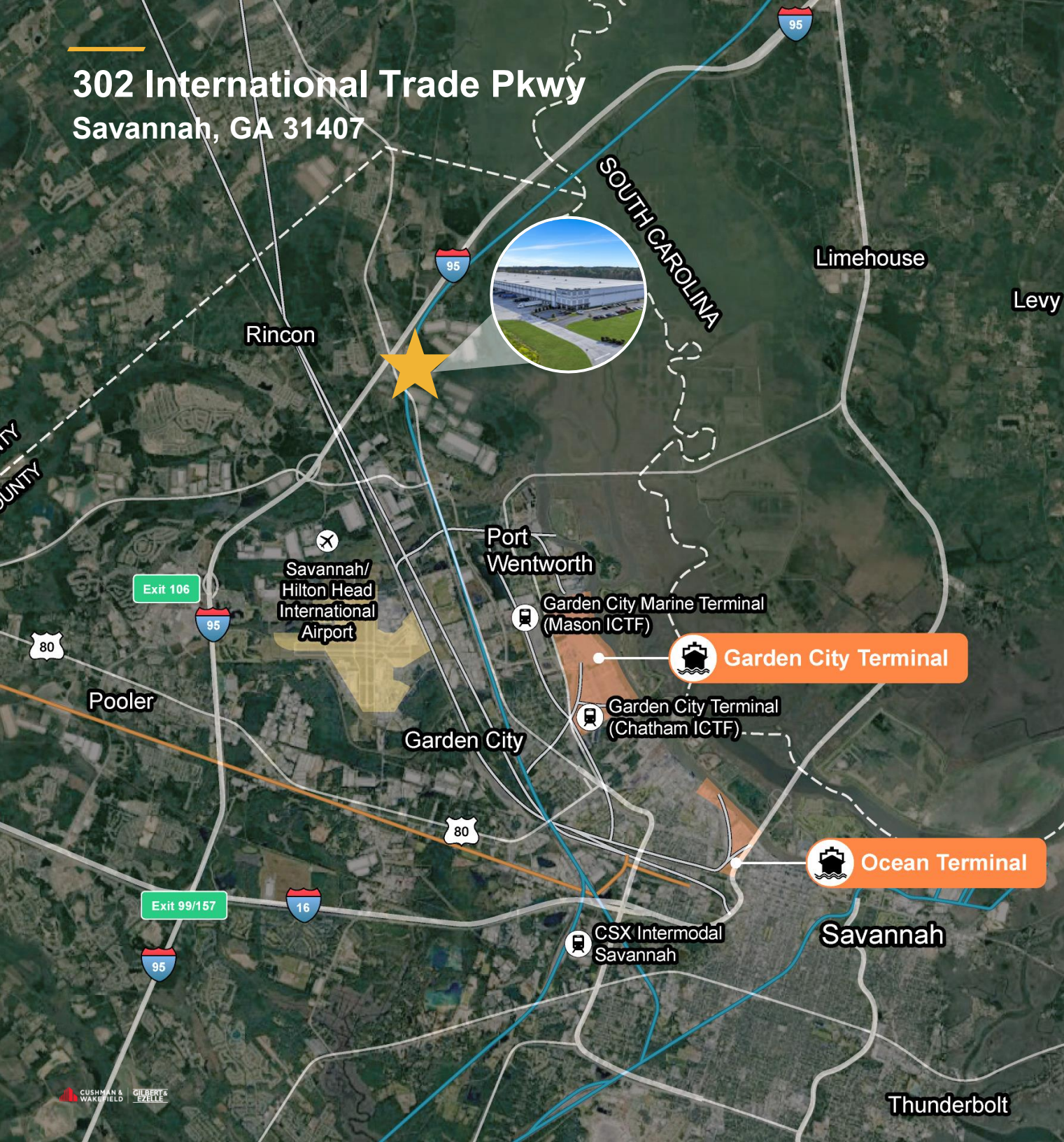
82 Auto Spaces

91 Dock Doors

±3,770 SF Office

109 Truck Spaces

302 International Trade Pkwy
Savannah, GA 31407



2.0 MILES

TO INTERSTATE 95

6.1 MILES

TO GARDEN CITY
TERMINAL

6.5 MILES

SAVANNAH-HILTON HEAD
INTERNATIONAL AIRPORT

9.5 MILES

TO OCEAN
TERMINAL

12 MILES

TO INTERSTATE 16

230 MILES

TO ATLANTA

More Information:

Bob Robers, SIOR

Vice Chair

+1 404 808 7375

Bob.robbers@cushwake.com

Stephen Ezelle, SIOR

Partner

+1 912 441 3083

sezelle@gilbertezelle.com

Brian Monaghan, SIOR

Vice Chair

+1 404 853 5212

Brian.monaghan@cushwake.com

©2026 Cushman & Wakefield. All rights reserved. The material in this presentation has been prepared solely for information purposes and is strictly confidential. Any disclosure, use, copying or circulation of this presentation (or the information contained within it) is strictly prohibited, unless you have obtained Cushman & Wakefield's prior written consent. The views expressed in this presentation are the views of the author and do not necessarily reflect the views of Cushman & Wakefield. Neither this presentation nor any part of it shall form the basis of, or be relied upon in connection with any offer, or act as an inducement to enter into any contract or commitment whatsoever. NO REPRESENTATION OR WARRANTY IS GIVEN, EXPRESS OR IMPLIED, AS TO THE ACCURACY OF THE INFORMATION CONTAINED WITHIN THIS PRESENTATION, AND CUSHMAN & WAKEFIELD IS UNDER NO OBLIGATION TO SUBSEQUENTLY CORRECT IT IN THE EVENT OF ERRORS.

