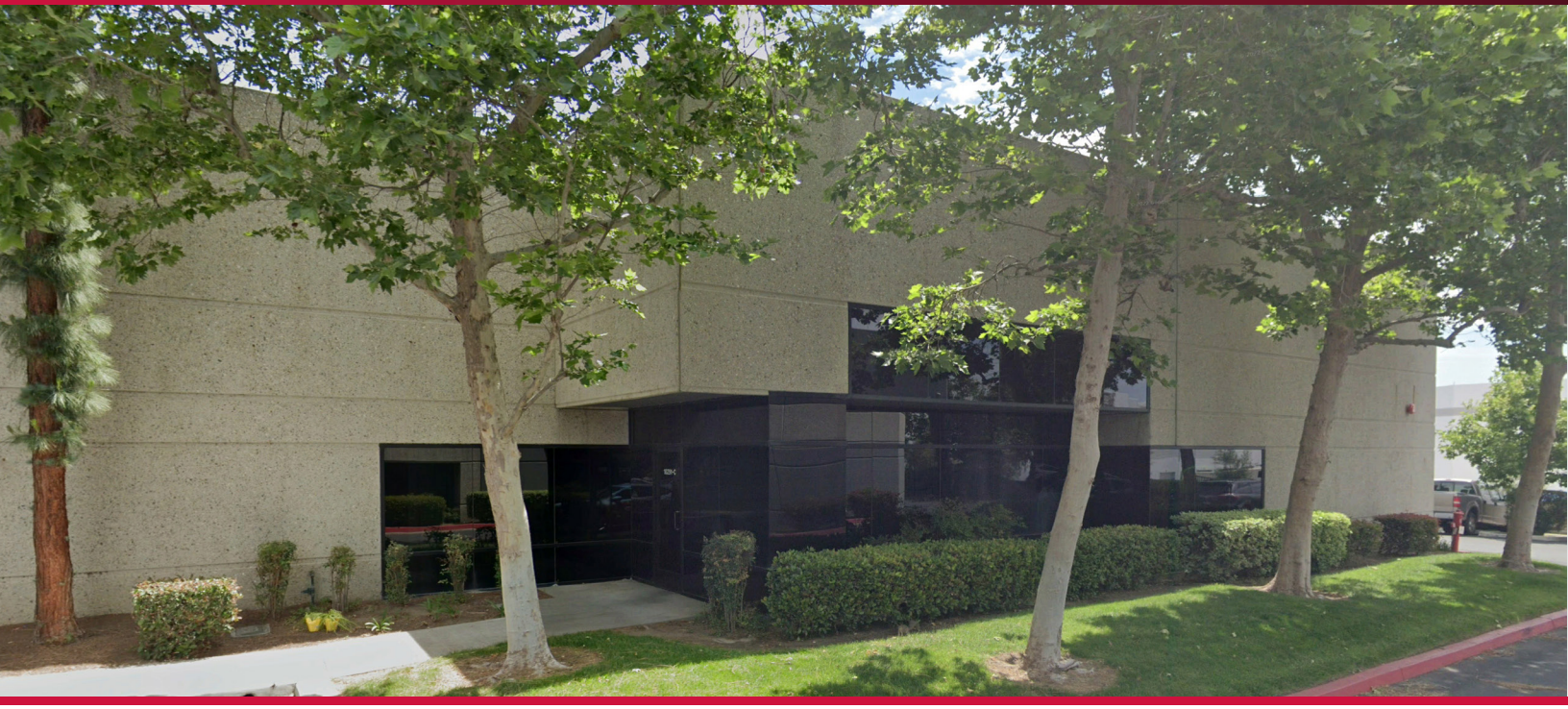


**FOR LEASE**  
**±6,938 SF INDUSTRIAL**

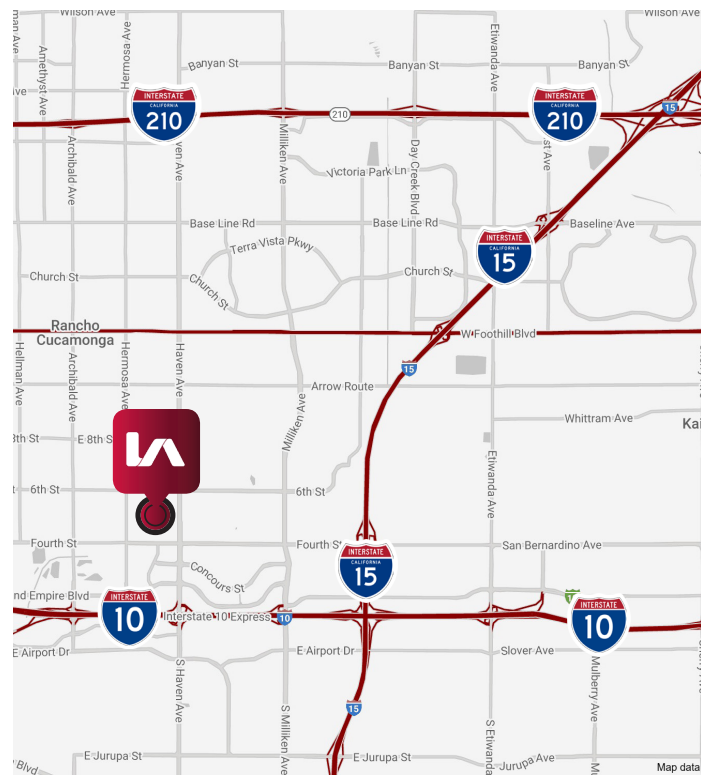
**10291 TRADEMARK STREET, SUITE C**  
**Rancho Cucamonga, CA 91730**



## PROPERTY HIGHLIGHTS

- ±6,938 SF Industrial Available
- ±1,000 SF of Office Space
- High End Business Environment
- Fire Sprinklered
- Two (2) Ground Level Loading Doors
- 400 Amps, 120/208 Volt Power
- Power and Air lines Distributed Throughout Warehouse
- Convenient Access to the I-10 & I-15 Freeways

## LOCATION MAP



**JIM RIDENS**  
D (909) 373-2718  
jridens@lee-assoc.com  
DRE #00974728

**NEIL RIDENS**  
D (909) 373-2717  
nridens@lee-assoc.com  
DRE #02106181

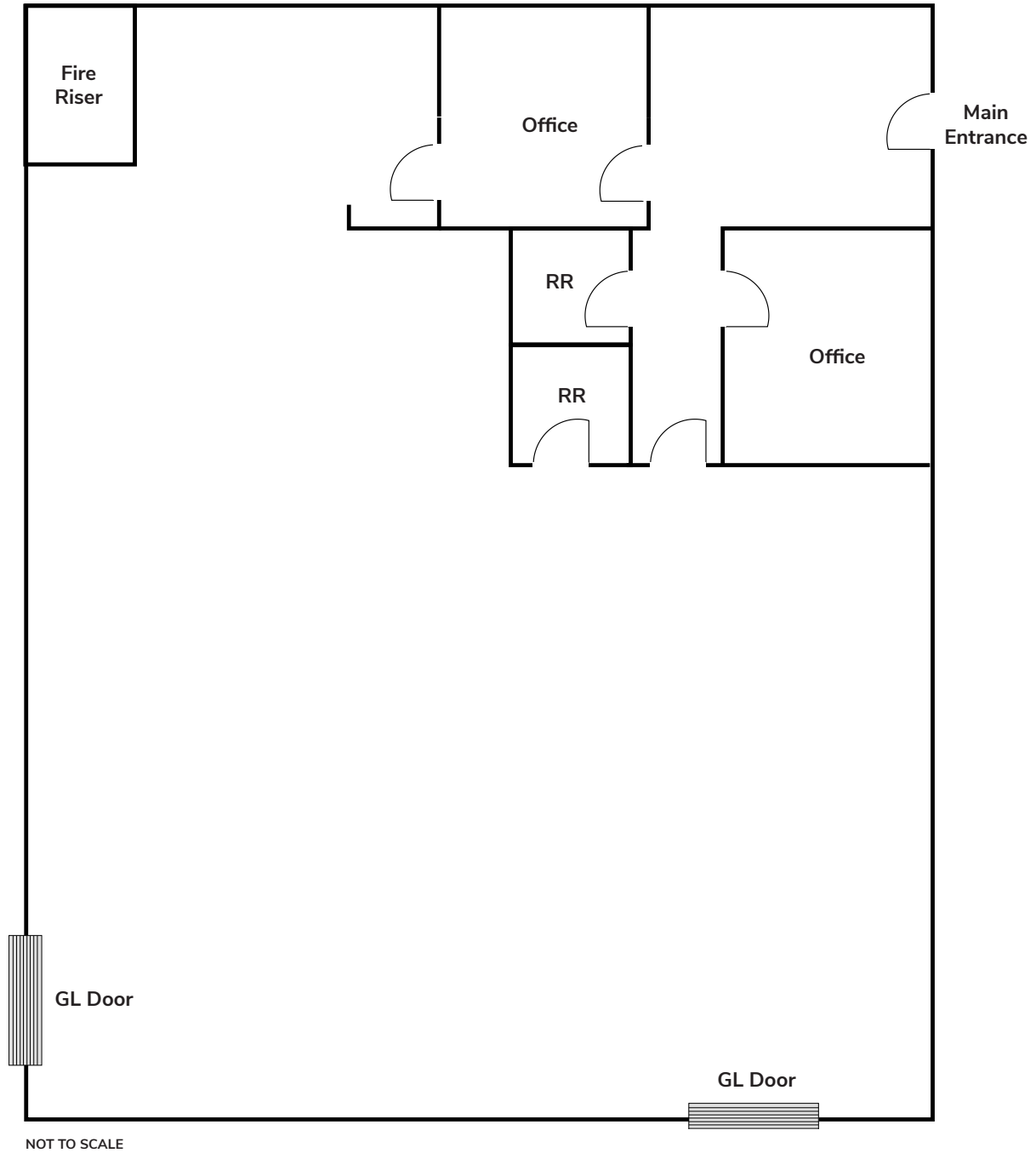
**LEE & ASSOCIATES - ONTARIO**  
3535 Inland Empire Boulevard  
Ontario, CA 91764  
(909) 989-7771  
Corporate ID: 00976995

**LEE & ASSOCIATES**  
COMMERCIAL REAL ESTATE SERVICES

**FOR LEASE**  
±6,938 SF INDUSTRIAL

**10291 TRADEMARK STREET, SUITE C**  
Rancho Cucamonga, CA 91730

**BUILDING FLOOR PLAN**



**JIM RIDENS**  
D (909) 373-2718  
jridens@lee-assoc.com  
DRE #00974728

**NEIL RIDENS**  
D (909) 373-2717  
nridens@lee-assoc.com  
DRE #02106181

**LEE & ASSOCIATES - ONTARIO**  
3535 Inland Empire Boulevard  
Ontario, CA 91764  
(909) 989-7771  
Corporate ID: 00976995

**LEE & ASSOCIATES**  
COMMERCIAL REAL ESTATE SERVICES