

FOR LEASE

# 313 JOHN RINGLING BLVD.

SARASOTA, FL 34236



## PROPERTY DESCRIPTION

1,600 SF trophy retail space available for lease located in the heart of St. Armands Circle on John Ringling Blvd. in Sarasota, FL. The property features direct frontage with high visibility on John Ringling Blvd with high foot traffic and strong retail operators such as Daiquiri Deck, White House Black Market, Kilwins Ice Cream, and many others. The space is less than half a mile from North Lido Beach that receives many visitor year over year.

## PROPERTY HIGHLIGHTS

- 1,600 SF standard retail space for lease
- Located on St. Armands Circle
- High foot traffic market
- Strong retail synergy
- Direct frontage on John Ringling Blvd.

## OFFERING SUMMARY

Lease Rate:	Negotiable
Available SF:	1,600 SF
Building Size:	5,964 SF

DEMOGRAPHICS	1 MILE	3 MILES	5 MILES
Total Households	1,058	11,124	40,871
Total Population	2,113	20,397	87,019
Average HH Income	\$189,116	\$164,164	\$112,395

**BRYAN COHEN**

561.471.0212

info@cohencommercial.com



FOR LEASE

# 313 JOHN RINGLING BLVD.

SARASOTA, FL 34236



**BRYAN COHEN**

561.471.0212

info@cohencommercial.com



FOR LEASE

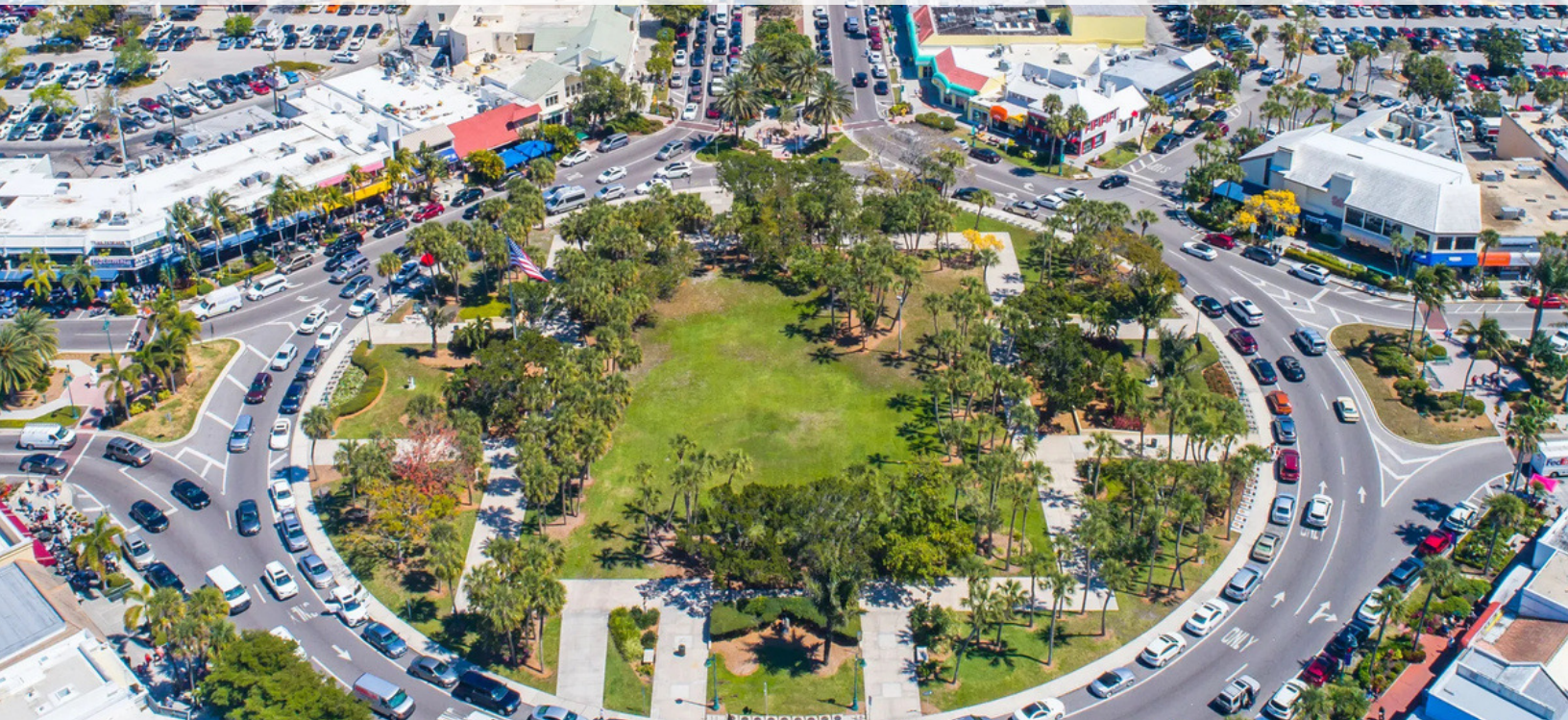
# 313 JOHN RINGLING BLVD.

SARASOTA, FL 34236

St. Armands Circle is one of Florida's most iconic coastal shopping and dining destinations, located on a barrier island between downtown Sarasota and Lido Beach. Known for its European-inspired layout, lush tropical landscaping, and vibrant pedestrian atmosphere, the Circle blends luxury retail, chef-driven restaurants, art galleries, and professional offices in a walkable, open-air environment.

Originally envisioned in the 1920s by circus magnate and real estate developer John Ringling, the Circle was designed as an upscale commercial and cultural hub. Ringling purchased much of the surrounding land and developed the area with grand ambitions, creating a distinctive roundabout design centered around a landscaped park. Over the decades, it has evolved into a premier lifestyle destination while maintaining its historic charm and architectural character.

Today, St. Armands Circle attracts both affluent local residents and year-round visitors drawn to Sarasota's beaches, arts scene, and luxury coastal lifestyle. Its combination of high foot traffic, established brand recognition, and a curated mix of boutiques and dining concepts makes it one of the Gulf Coast's most sought-after retail locations.



**BRYAN COHEN**

561.471.0212

info@cohencommercial.com

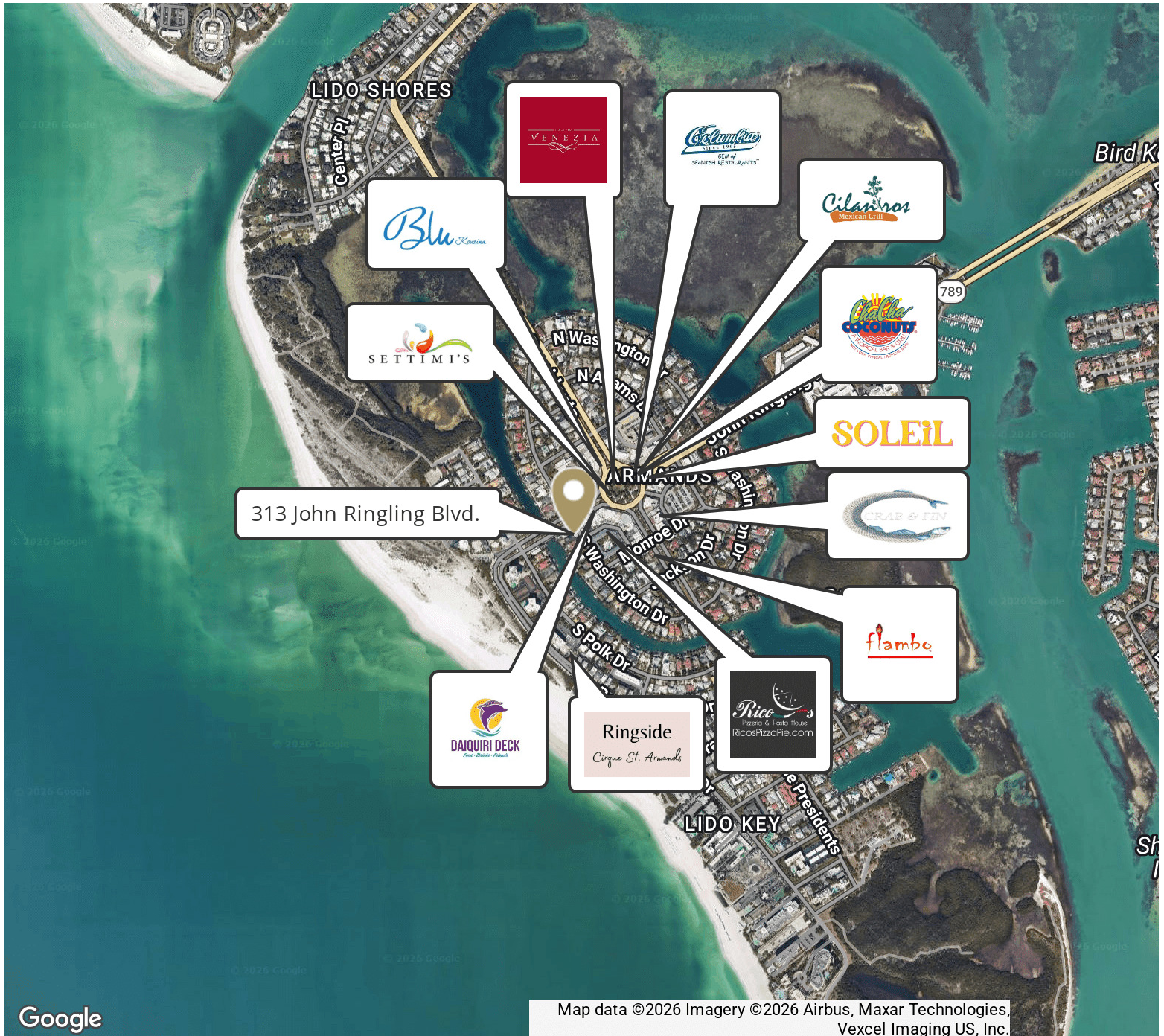




FOR LEASE

# 313 JOHN RINGLING BLVD.

SARASOTA, FL 34236



**BRYAN COHEN**

561.471.0212

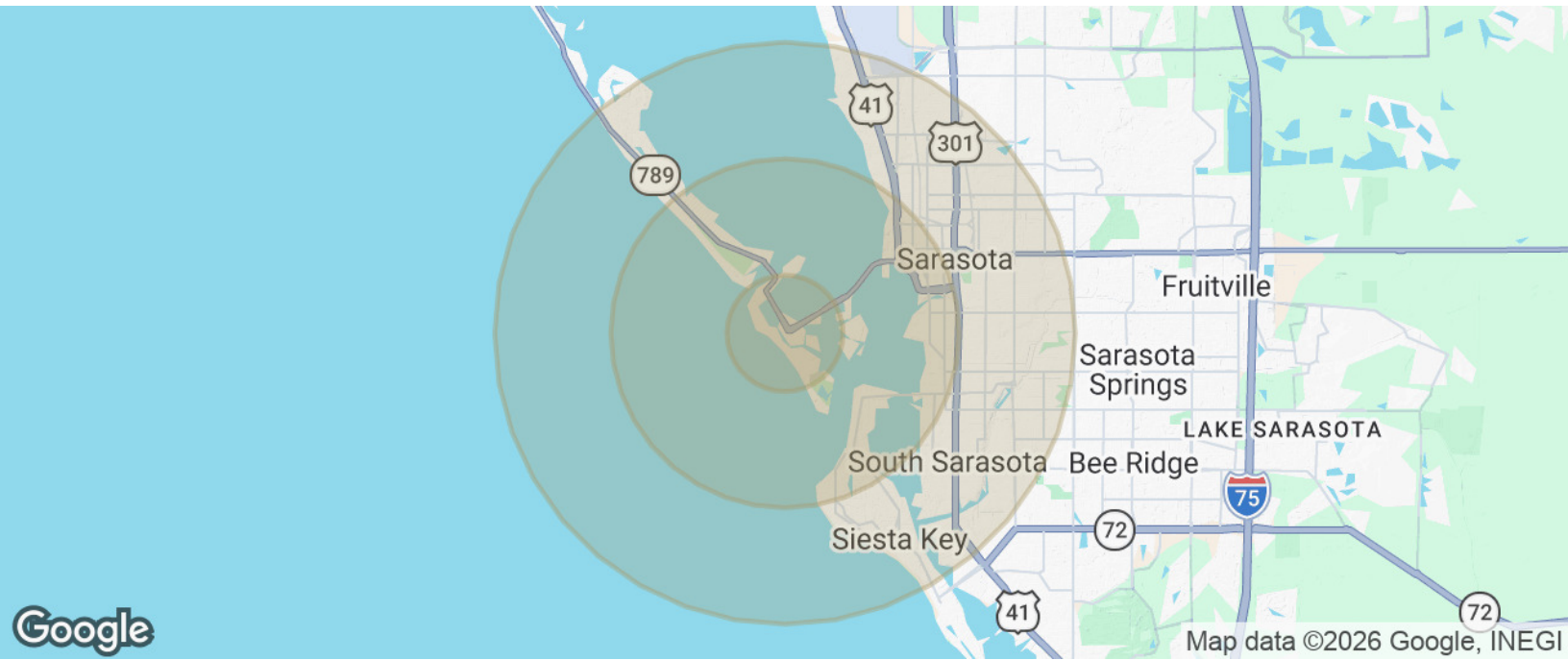
info@cohencommercial.com



FOR LEASE

# 313 JOHN RINGLING BLVD.

SARASOTA, FL 34236



Total Population	2,113	20,397	87,019
Average Age	73	62	51
Average Age (Male)	73	62	50
Average Age (Female)	73	63	52

<b>HOUSEHOLDS &amp; INCOME</b>	<b>1 MILE</b>	<b>3 MILES</b>	<b>5 MILES</b>
Total Households	1,058	11,124	40,871
# of Persons per HH	2	1.8	2.1
Average HH Income	\$189,116	\$164,164	\$112,395
Average House Value	\$1,177,784	\$1,130,257	\$648,405

Demographics data derived from AlphaMap

**BRYAN COHEN**

561.471.0212

info@cohencommercial.com

