

FULL-FLOOR EXECUTIVE OFFICE CONDO  
OFFERED AT:  
**\$1,350,000**



# 707 N FRANKLIN ST 6<sup>TH</sup> FL TAMPA, FL 33602



Own an entire private floor inside one of Downtown Tampa's most iconic landmark buildings. This 4,112 SF executive office condo offers direct elevator access, full-floor exclusivity, and turnkey office infrastructure — ideal for law firms, financial services, creative agencies, or owner-users seeking prestige and privacy.

Located in Tampa's Central Business District with walkable access to dining, hotels, government buildings, Riverwalk, Channelside, and major transit corridors. Immediate access to I-275, Selmon Expressway, and Downtown core.

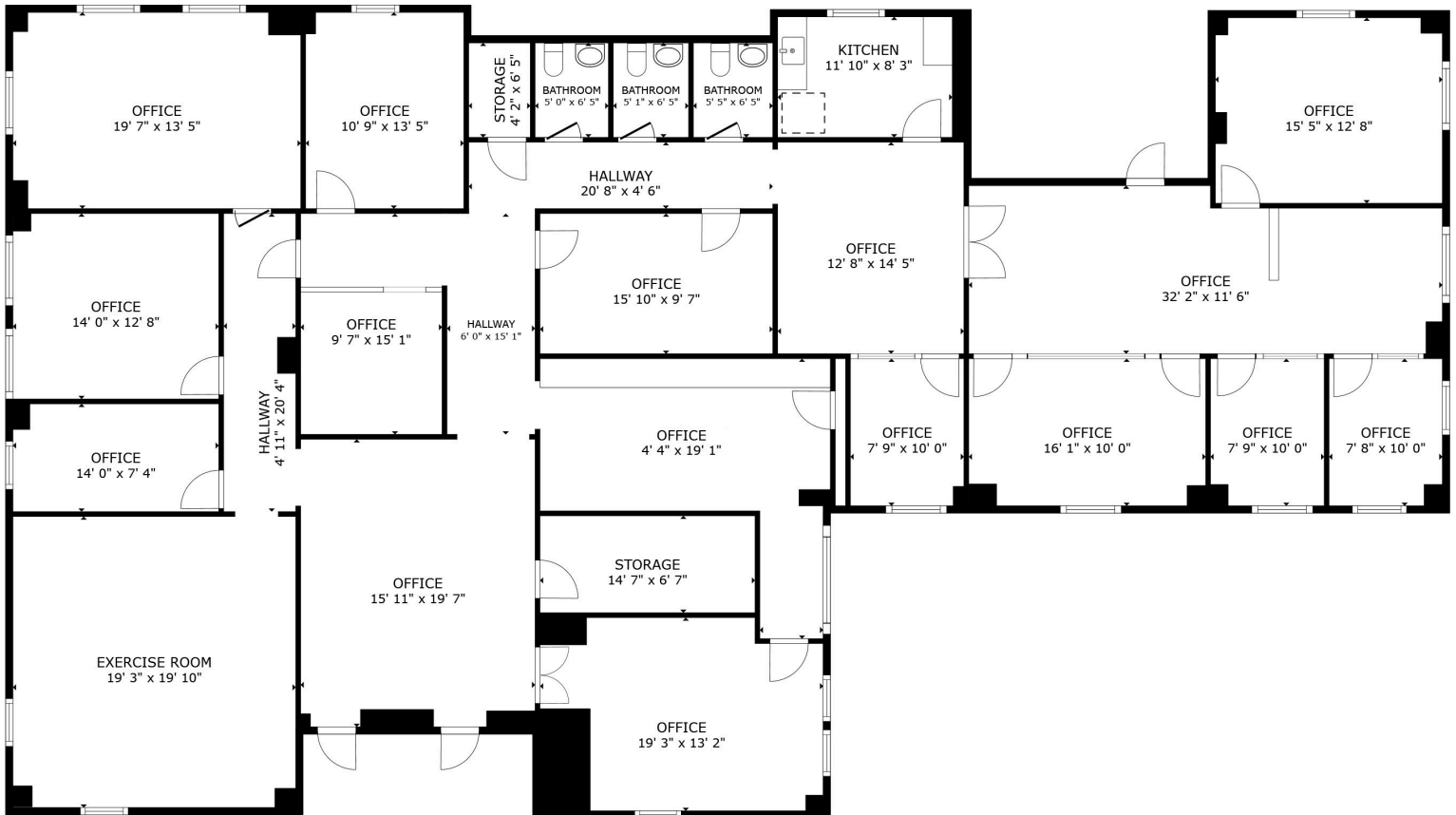


**CASH EALEY**  
(813) 230-2447

## KEY PROPERTY FEATURES

- 4,112 SF Full Private Floor
- Configured for 10+ Private Offices
- Multiple Conference Rooms
- Built 1926 — Historic Tampa Theatre
- Direct Elevator Access w/ Controlled Entry
- 3 Private Restrooms
- Kitchen/Break Area
- Dedicated IT/Data Room
- Storage + Support Areas

707 N FRANKLIN ST 6<sup>TH</sup> FL TAMPA, FL 33602  
FULL-FLOOR EXECUTIVE OFFICE CONDO  
OFFERED AT: \$1,350,000



FLOOR PLAN

Cash Ealey | (813)230-2447 | Cash@EaleyBoydGroup.com



707 N FRANKLIN ST 6<sup>TH</sup> FL TAMPA, FL 33602  
FULL-FLOOR EXECUTIVE OFFICE CONDO  
OFFERED AT: \$1,350,000

 **COMMERCIAL**



Cash Ealey | (813)230-2447 | Cash@EaleyBoydGroup.com

**COMPASS**