

TRIANGLE CENTRE

6401 Golden Triangle Drive, Greenbelt, MD 20770
Prince George's County

OFFICE SPACE FOR LEASE
AS SMALL AS 1,000 SF



AVAILABILITIES

- **Suite 110:** 2,133 SF
- **Suite 202:** 3,584 SF
- **Suite 303:** 1,000 SF
- **Suite 305:** 4,101 SF
- **Suite 315:** 2,333 SF

BUILDING FEATURES

- Lease Rate: \$20.50, Full Service
- 80,450 rentable square feet
- Four (4) stories
- Zoned CO (Commercial Office)
- Minutes from NASA / Goddard Space Flight Center
- Free covered parking available
- Transportation to Greenbelt Metro & PG County bus service (TheBus)
- Immediate access to Balto/Wash. Pkwy (MD Rt. 295) & Capital Beltway (I-495)
- Excellent visibility from Greenbelt Road (Route 193)

OWNED AND MANAGED BY



PLEASE CONTACT

GOLDMAN PARTNERS GROUP

(410) 736 - 1026

info@goldmanpartnersgroup.com

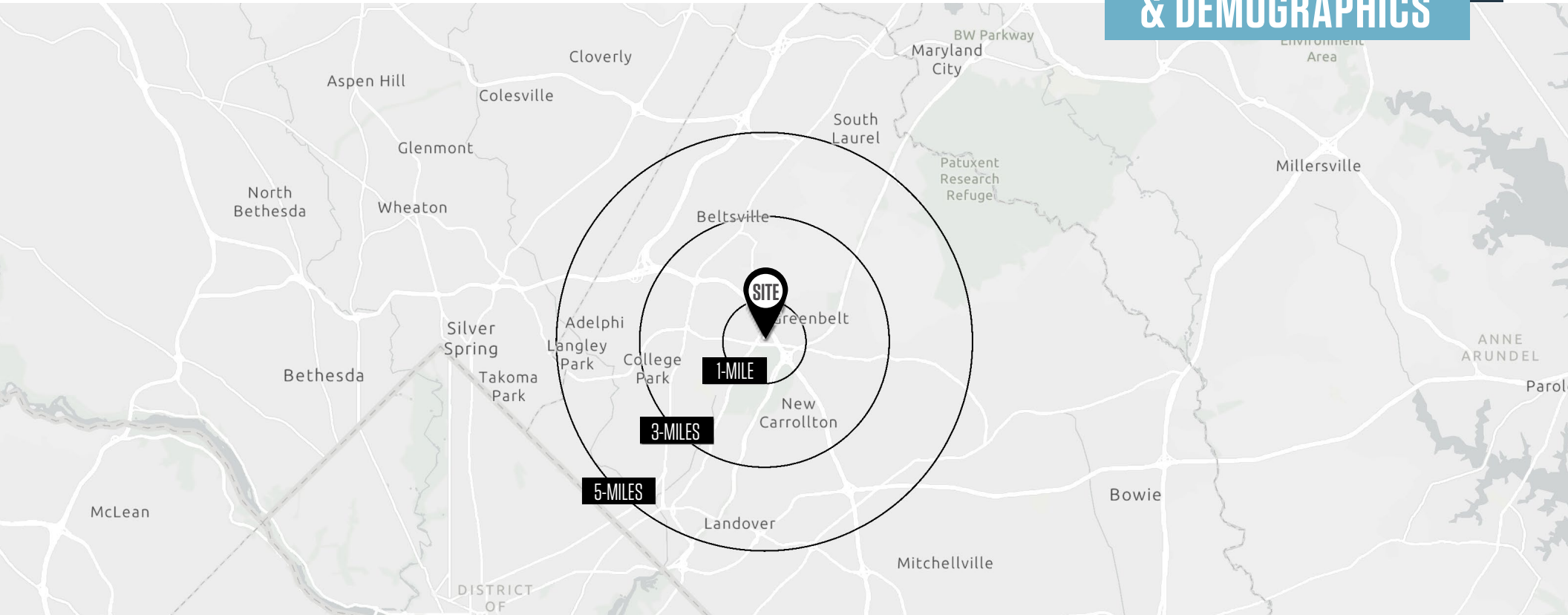
Call • Text • Email

TRIANGLE CENTRE

6401 Golden Triangle Drive, Greenbelt, MD 20770
Prince George's County

LOCATION

& DEMOGRAPHICS



TRAFFIC COUNTS | 2023

Greenbelt Road [MD-193]	37,482 ADT
Kenilworth Road [MD-201]	43,922 ADT
Capital Beltway [I-95/495]	210,060 ADT

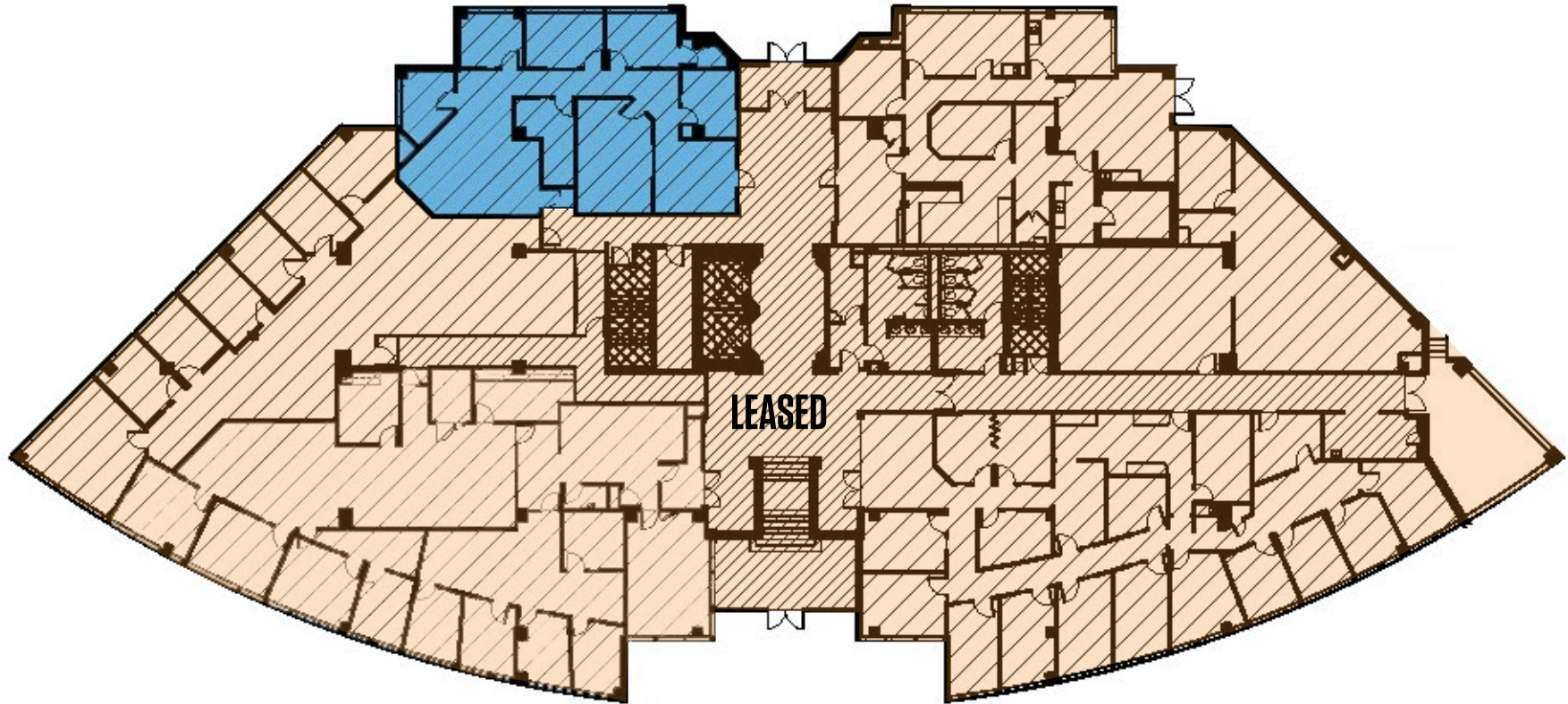
	1-MILE	3-MILES	5-MILES	1-MILE	3-MILES	5-MILES	
Population	16,151	113,845	345,638	Households	6,336	36,781	111,125
Daytime Population	20,393	133,805	297,461	Average Household Income	\$105,304	\$102,792	\$105,432

TRIANGLE CENTRE

6401 Golden Triangle Drive, Greenbelt, MD 20770
Prince George's County

FIRST FLOOR PLAN

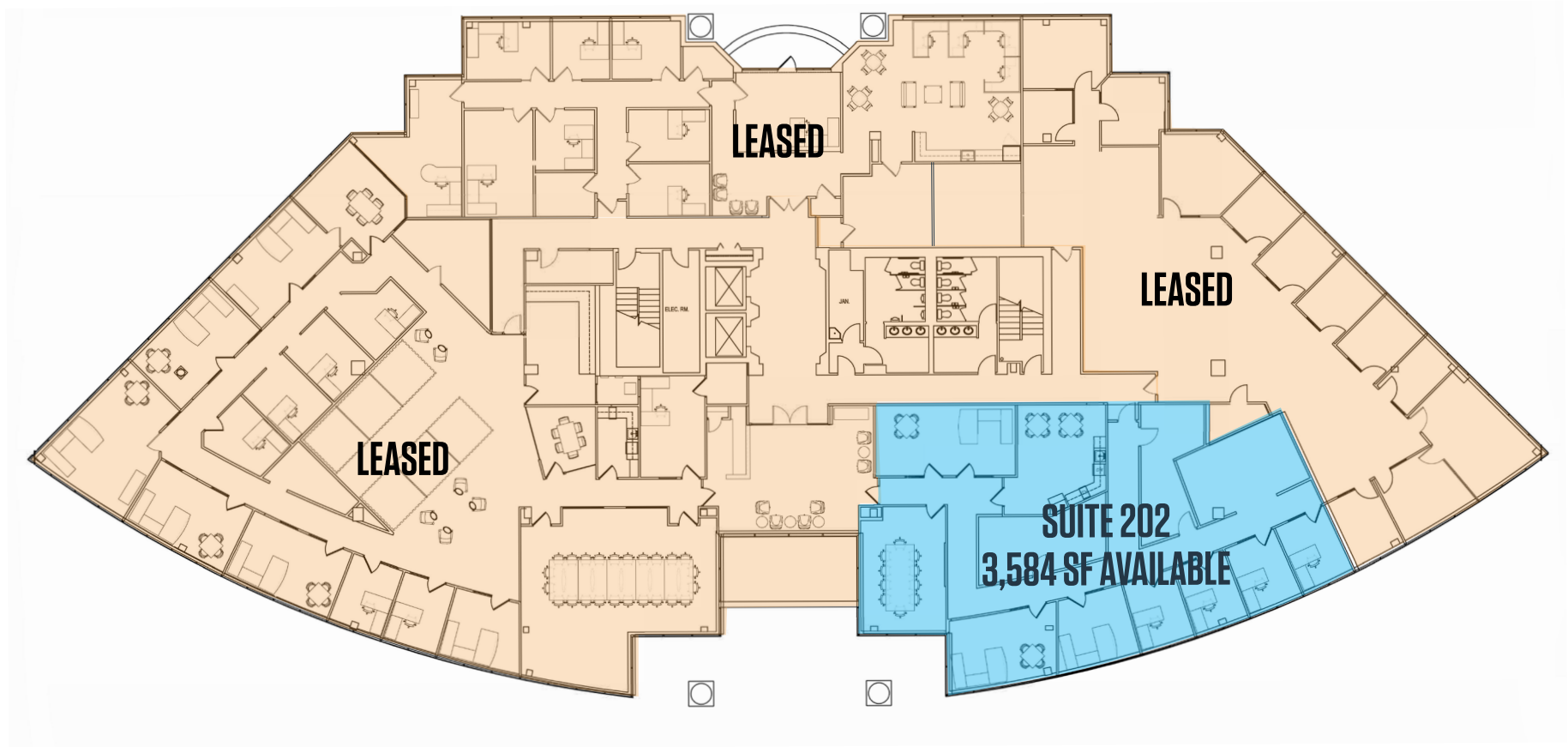
SUITE 110
2,133 SF AVAILABLE



TRIANGLE CENTRE

6401 Golden Triangle Drive, Greenbelt, MD 20770
Prince George's County

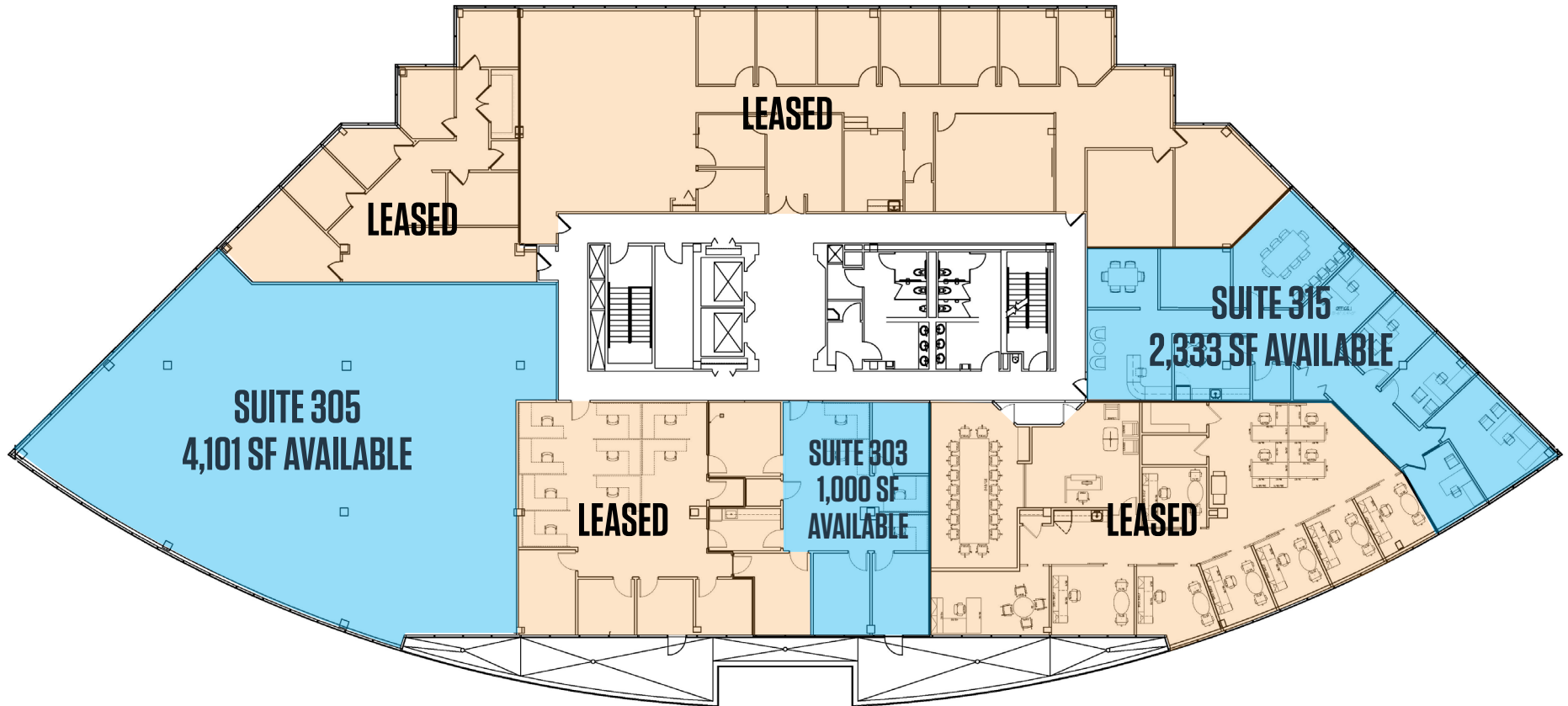
SECOND FLOOR PLAN



TRIANGLE CENTRE

6401 Golden Triangle Drive, Greenbelt, MD 20770
Prince George's County

THIRD FLOOR PLAN



TRIANGLE CENTRE

6401 Golden Triangle Drive, Greenbelt, MD 20770
Prince George's County

PHOTOS



TRIANGLE CENTRE

6401 Golden Triangle Drive, Greenbelt, MD 20770

Prince George's County

For More Information, Please Contact:

GOLDMAN PARTNERS GROUP

info@goldmanpartnersgroup.com (410) 736 - 1026

Please call, text, or email

THE FALLSTAFF GROUP, INC.



GOLDMAN PARTNERS GROUP

