

New Office Sublease Available

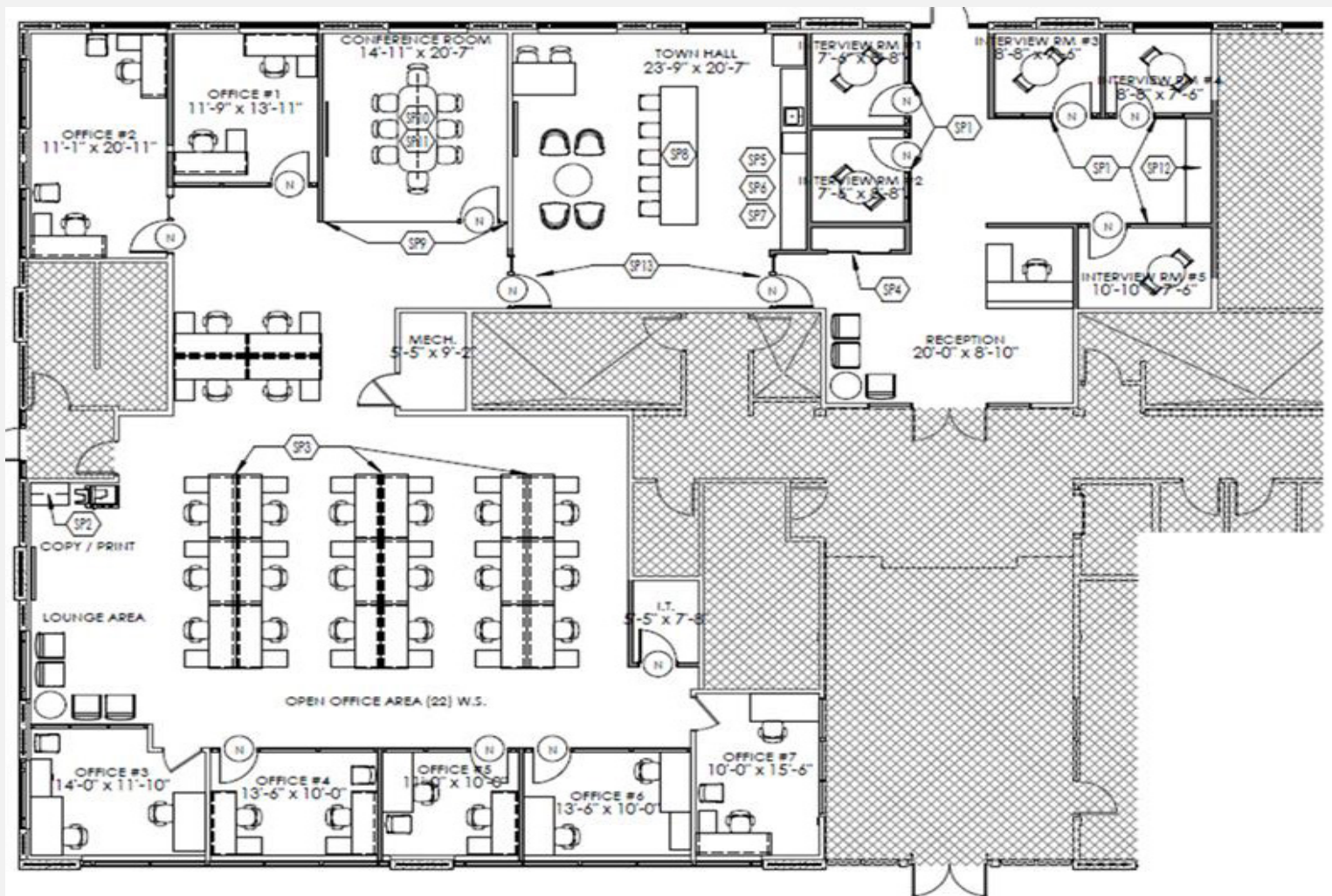


18660 Graphics Drive | Tinley Park, IL 60477

Space & Building Features

- 6,865 SF
- 1st floor space
- Sublease through July 31, 2029
- Immediate occupancy
- Asking rate is negotiable
- Move-in ready
- Fully furnished space
- High-end build-out
- Building amenities include: *walking paths, key fob security, abundant parking, two-story atrium*

New Office Sublease Available



Contact Information

Noah Turner, Senior Vice President
312.602.6905 | nturner@cbiz.com

Natalia Walker, Vice President
312.602.6908 | natalia.walker@cbiz.com

New Office Sublease Available



Contact Information

Noah Turner, Senior Vice President
312.602.6905 | nturner@cbiz.com

Natalia Walker, Vice President
312.602.6908 | natalia.walker@cbiz.com