



2 MAIN
at CITY CREEK

Jordan Johnson
801.321.8711
Jordan.Johnson@propertyreserve.org



Address

2 Main, Salt Lake City, Utah 84101

2 Main Overview

Class-A Office Building

280,800 square feet

19 floors

Built in 1998

2 Main at City Creek is a Class-A, nineteen-story, multi-tenant office building with a prestigious Main Street address in the heart of Salt Lake City's central business district. The building includes a remodel of the main lobby, garage entrance, and elevator systems. 2 Main features on-site property management, fitness facility, showers, towel service, conference room and lounge. It also includes direct access to covered garage parking and nearby access to City Creek Center, one of the nation's largest and most acclaimed mixed-use downtown redevelopment projects. This unique environment features a retractable glass roof, the very popular City Creek Center food court, a creek that runs through the property, a pedestrian sky bridge and more. City Creek Center features world-class fashion and dining destinations with over 100 national stores and restaurants

Elevate at City Creek

All City Creek tenants have access to the amenity center, Elevate. Equipped with fitness center, showers, pickle ball, golf simulator, and basketball

Parking

Underground, covered, and surface parking available at prevailing market rates

Public Transit

Within easy walking distance to bus stations, TRAX stations, and Frontrunner stations

Lease Rate

Modified gross lease

Improvements

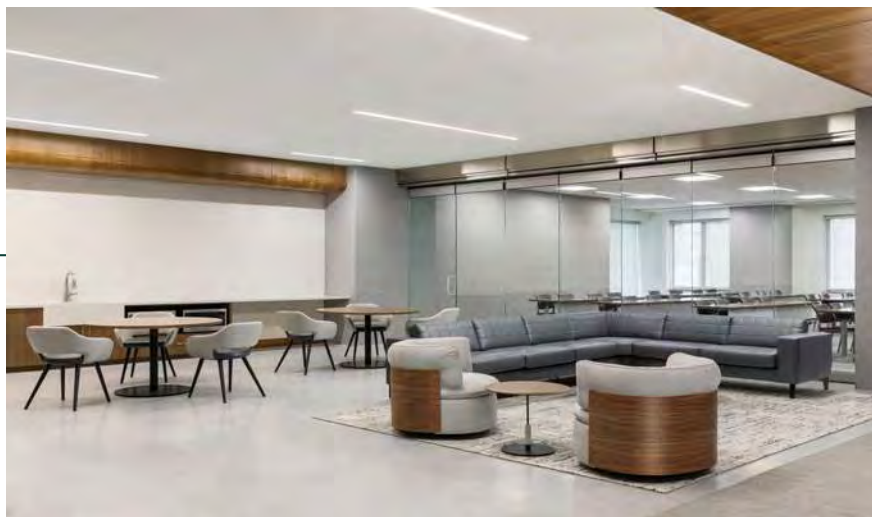
Generous TI packages available

AMENITIES AT 2 MAIN



GYM

Lounge

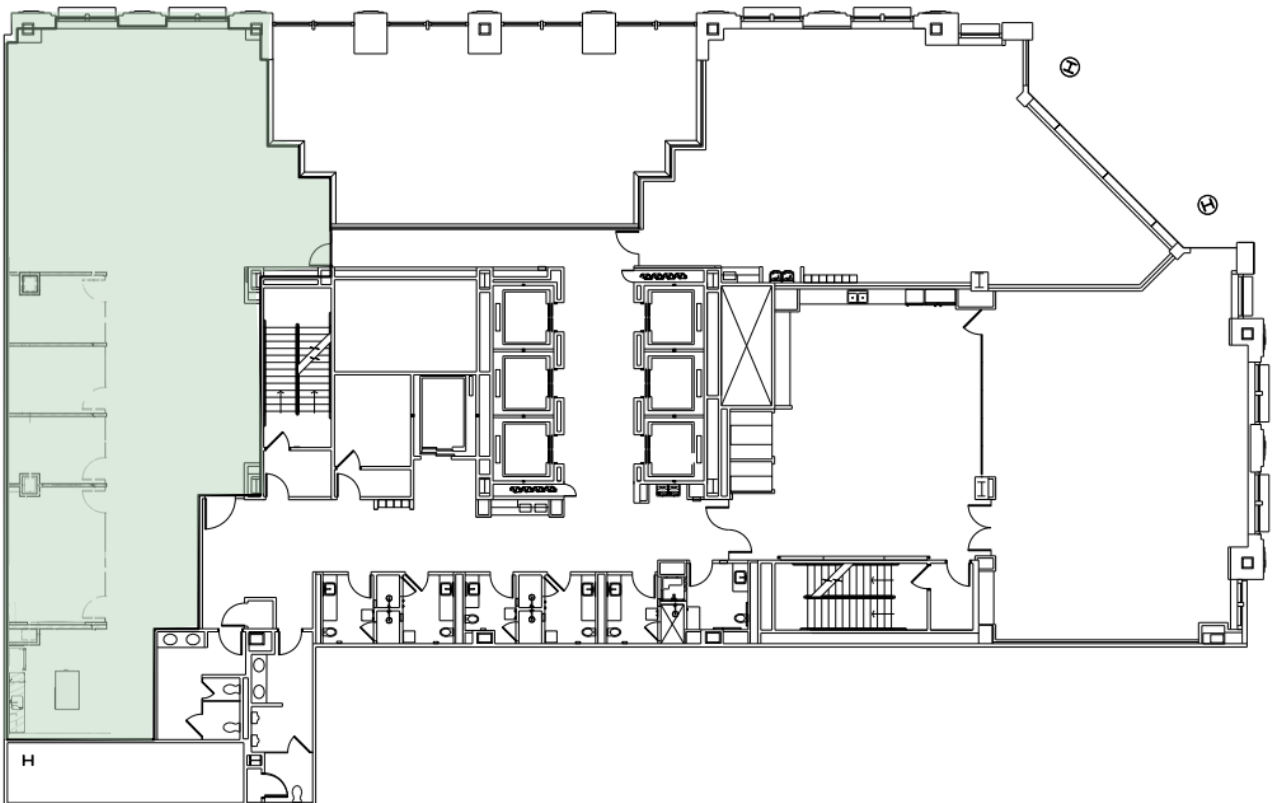


Training Room

Suite 250

Rentable Square Feet: 4,064
Lease Rates: \$32.00-\$34.00/RSF

Status: Available
Condition: Spec Suite



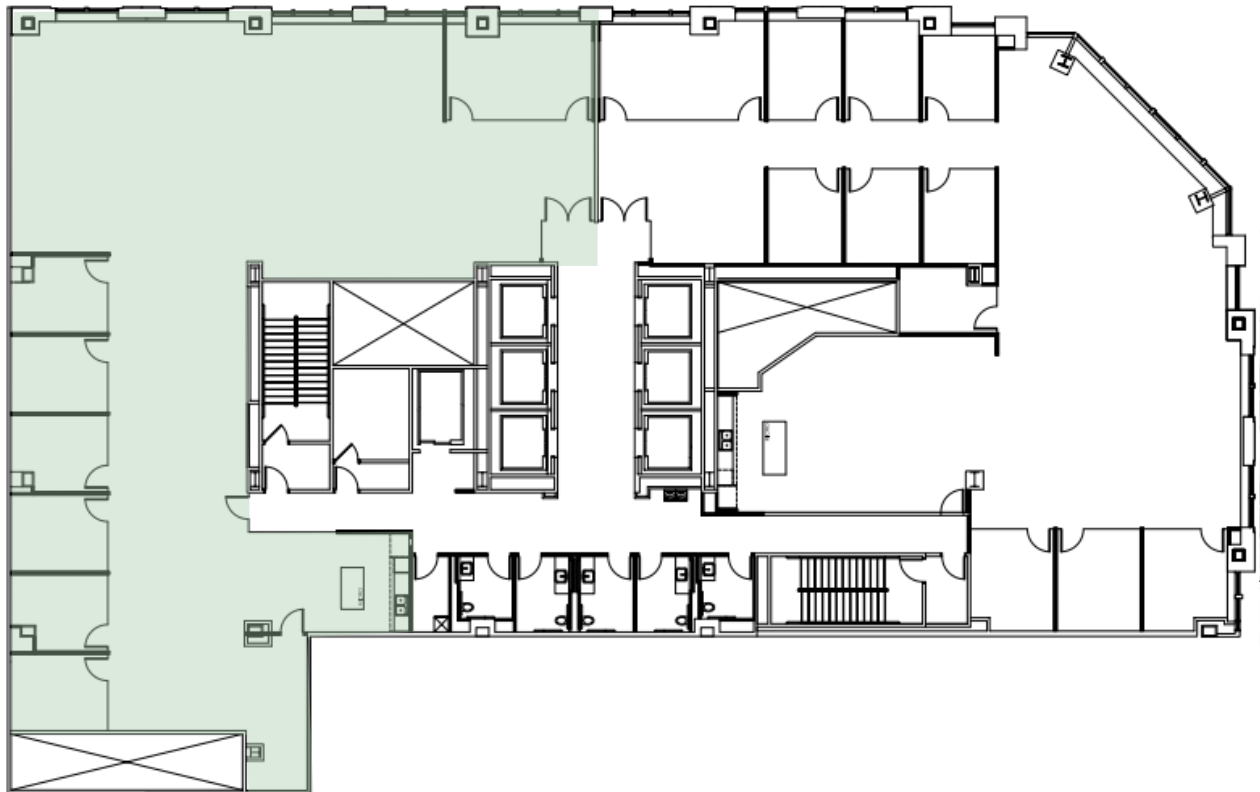
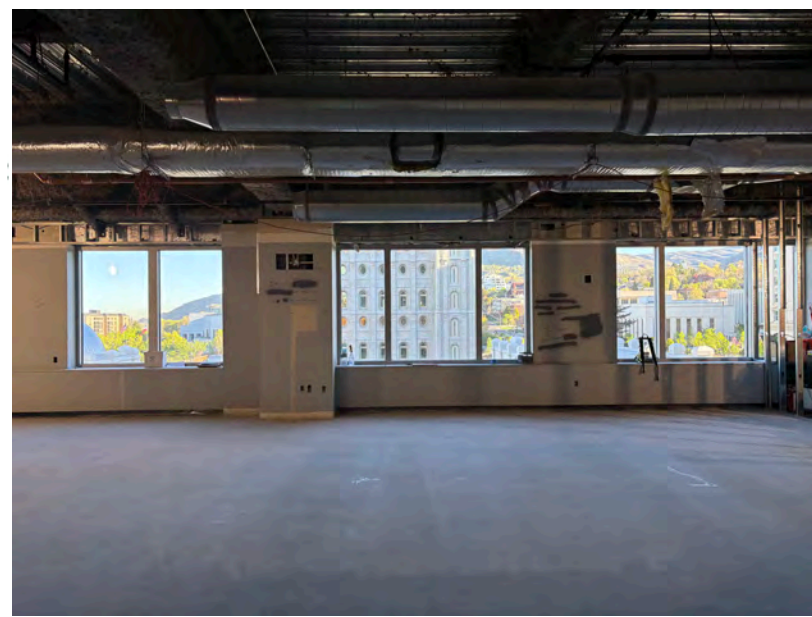
Suite 400

Rentable Square Feet: 5,557

Lease Rates: \$33.25-\$35.25/RSF

Status: Available July 2026

Condition: Future Spec Suite



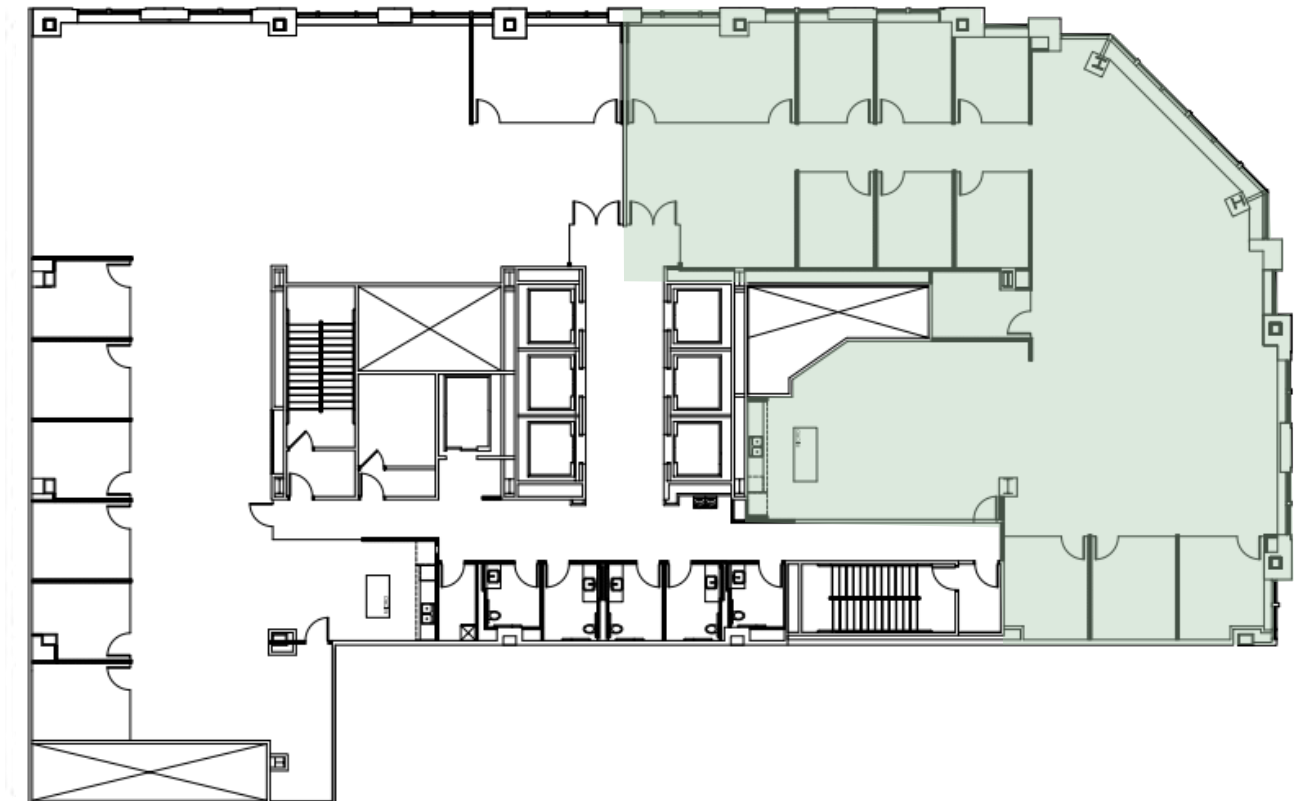
Suite 420

Rentable Square Feet: 6,381

Lease Rates: \$33.25-\$35.25/RSF

Status: Available July 2026

Condition: Future Spec Suite



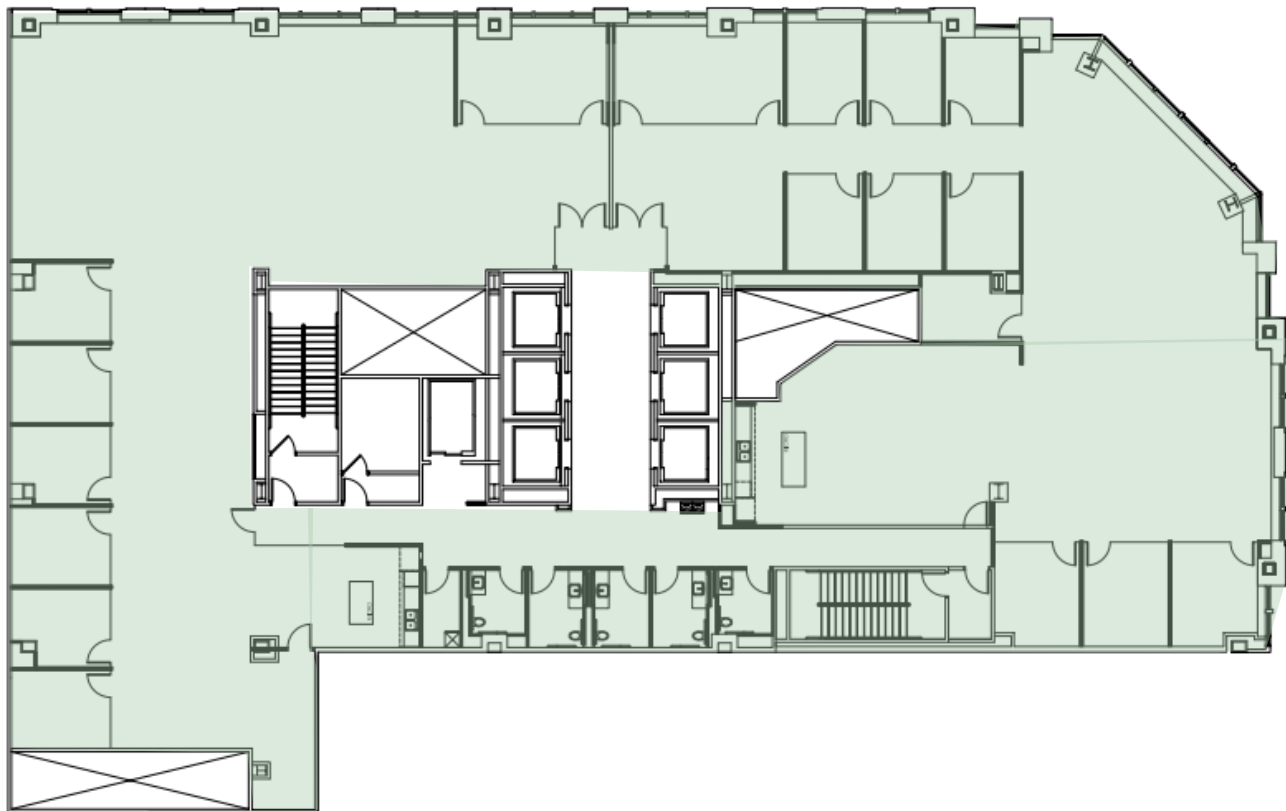
Suite 400 + 420

Rentable Square Feet: 11,938

Lease Rates: \$33.25-\$35.25/RSF

Status: Available July 2026

Condition: Future Spec Suite



Suite 520

Rentable Square Feet: 5,369
Lease Rates: \$33.25-\$35.25/RSF

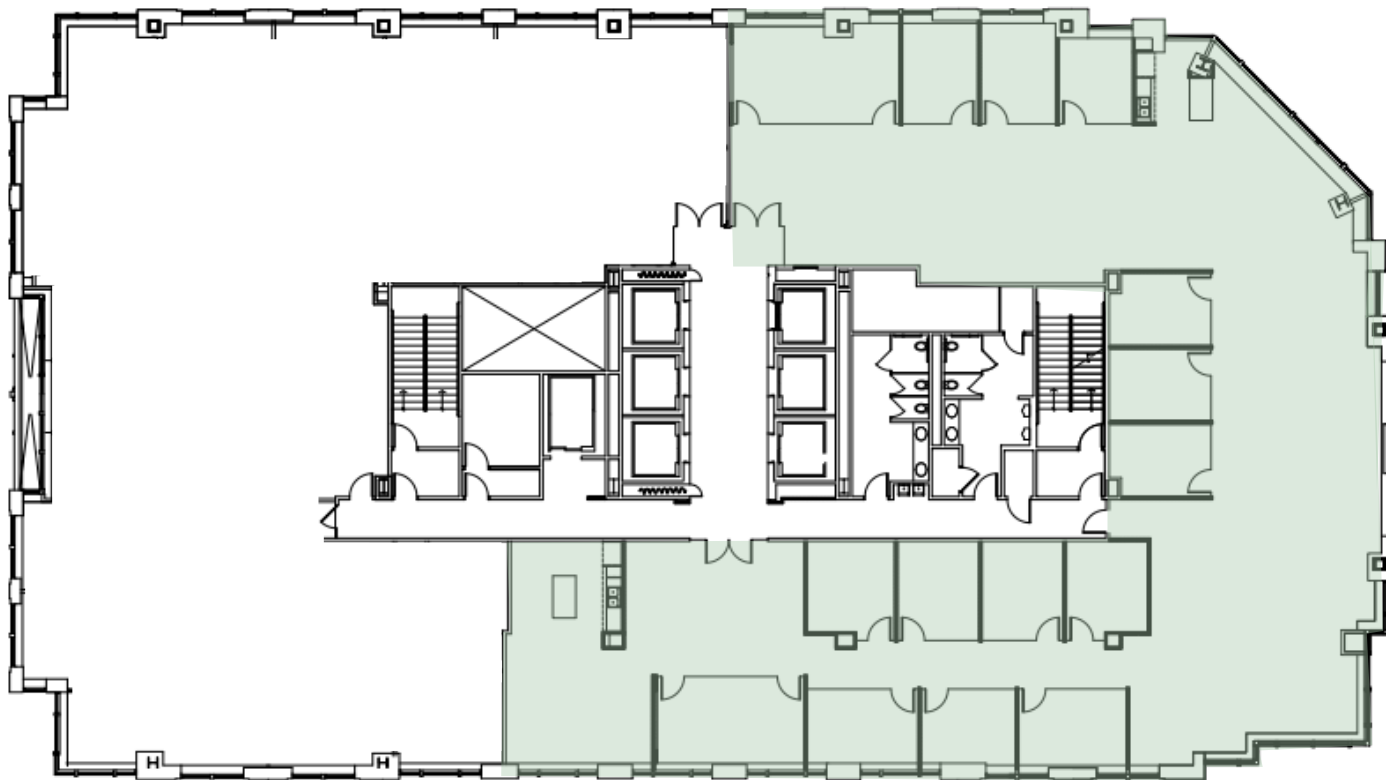
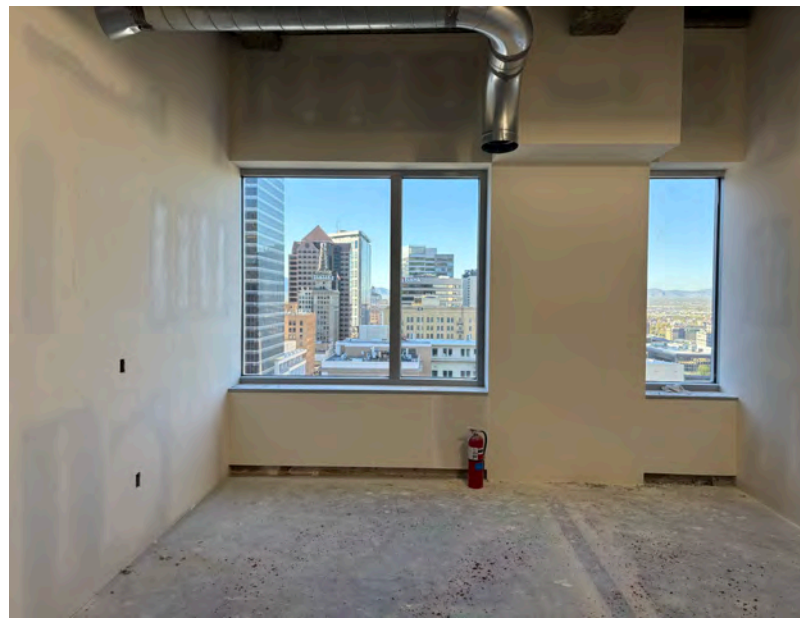
Status: Available January 2027
Condition: Future Spec Suite



Suite 1000 + 1070

Rentable Square Feet: 8,613
Lease Rates: \$35.00-\$37.00/RSF

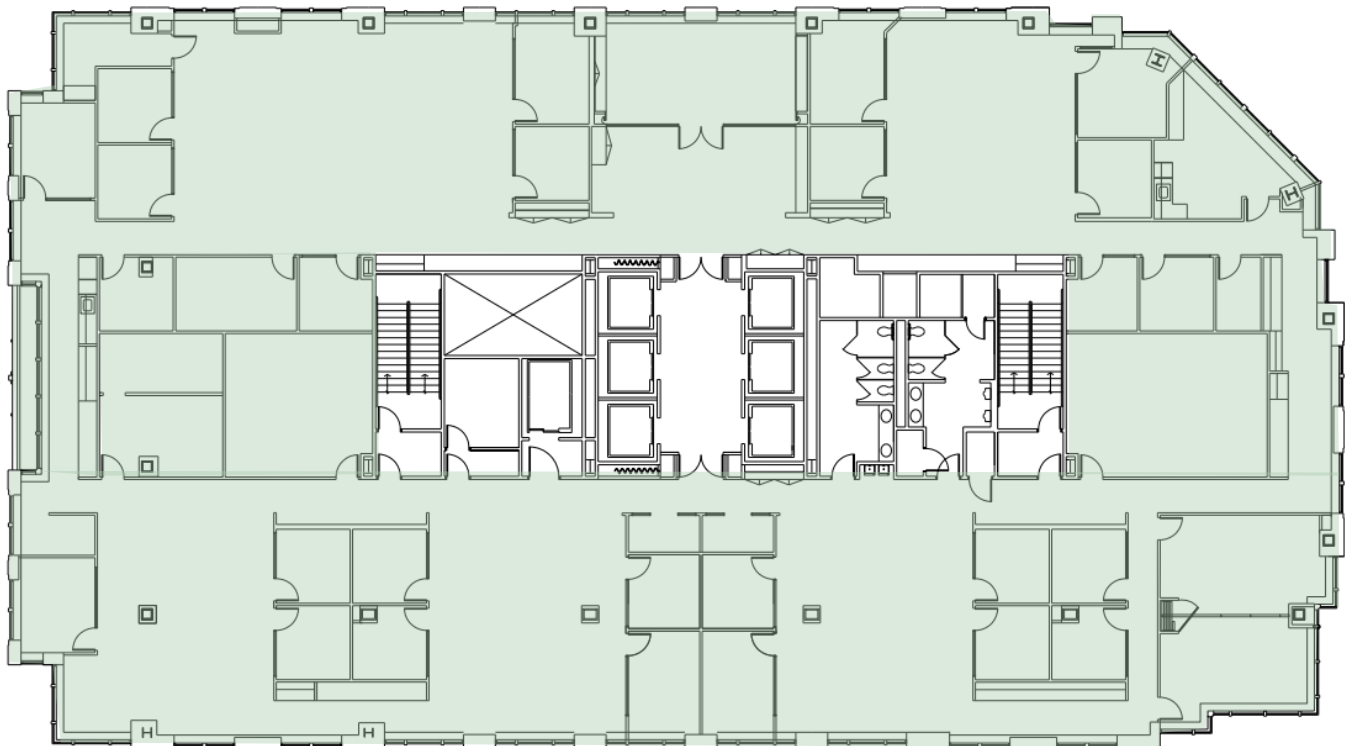
Status: Available July 2026
Condition: Future Spec Suite



Suite 1500

Rentable Square Feet: 16,744
Lease Rates: \$38.00-\$40.00/RSF

Status: Available September 2027
Condition: Previous tenant design intact



Suite 1650

Rentable Square Feet: 8,726

Lease Rates: \$38.00-\$40.00/RSF

Status: Available November 2026

Condition: Previous tenant design intact



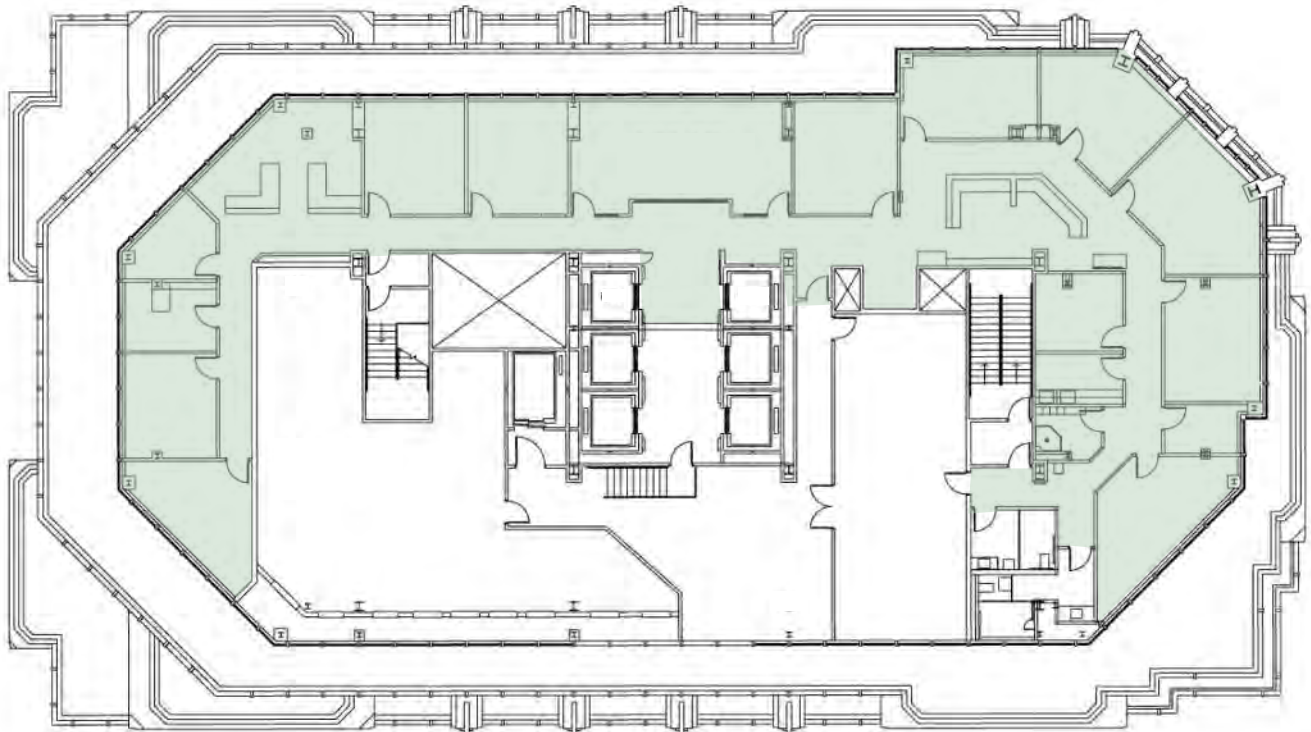
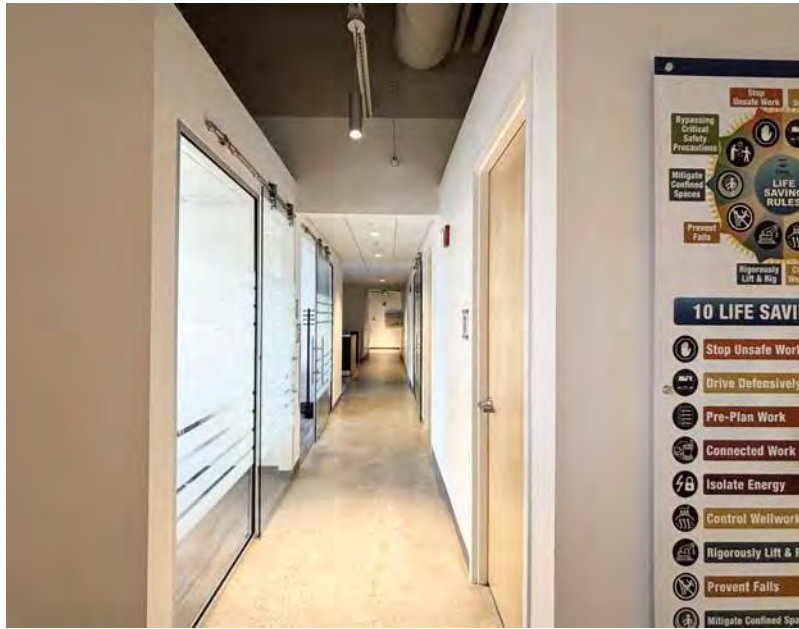
Suite 1900

Rentable Square Feet: 6,957

Lease Rates: \$38.00-\$40.00/RSF

Status: Available December 2026

Condition: Previous Tenant Design Intact



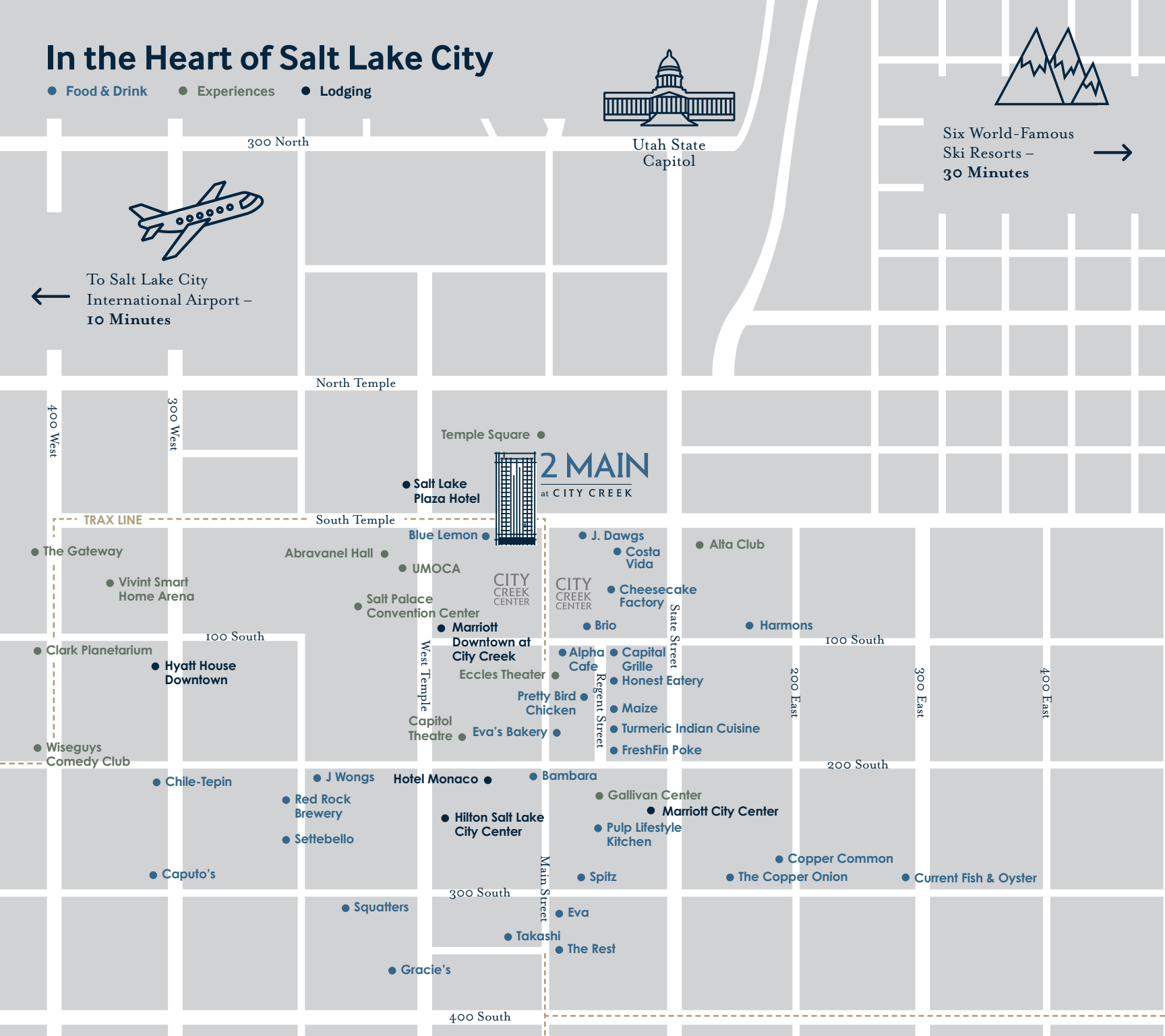
In the Heart of Salt Lake City

- Food & Drink
- Experiences
- Lodging



Six World-Famous
Ski Resorts –
30 Minutes →

← To Salt Lake City
International Airport –
10 Minutes



Contact

Jordan Johnson 801.321.8711
Jordan.Johnson@propertyreserve.org



PROPERTY
RESERVE