

FOR LEASE

2201 Kipling Street
Lakewood, CO 80215



Affordable Office Space With Parking

Property Details

- Space Available: 670 SF - 3,040 SF
- Term: Up to 3 Years
- Available: Immediately
- Lease Rate: Contact Broker
- Building Area: 15,958 SF
- Land Area: 1.36 Acres

Building Highlights

- Parking Available at No Additional Cost
- Flexible Office Configurations
- Small Business Friendly
- New Ownership
- Planned Common Area Improvements
- T.I. Allowance Available

Demographics



Population
1 Mile 11,634
3 Mile 103,918
5 Mile 315,198



Employees
1 Mile 4,230
3 Mile 78,027
5 Mile 168,015



Households
1 Mile 5,208
3 Mile 46,129
5 Mile 135,740



HH Income
1 Mile \$94,531
3 Mile \$95,879
5 Mile \$102,713

*Per CoStar

Contact Information

Colin Clancy
Broker | Owner
m: 720.352.5334
e: colin@clancycre.com



CLANCY COMMERCIAL REAL ESTATE

FOR LEASE

2201 Kipling Street
Lakewood, CO 80215

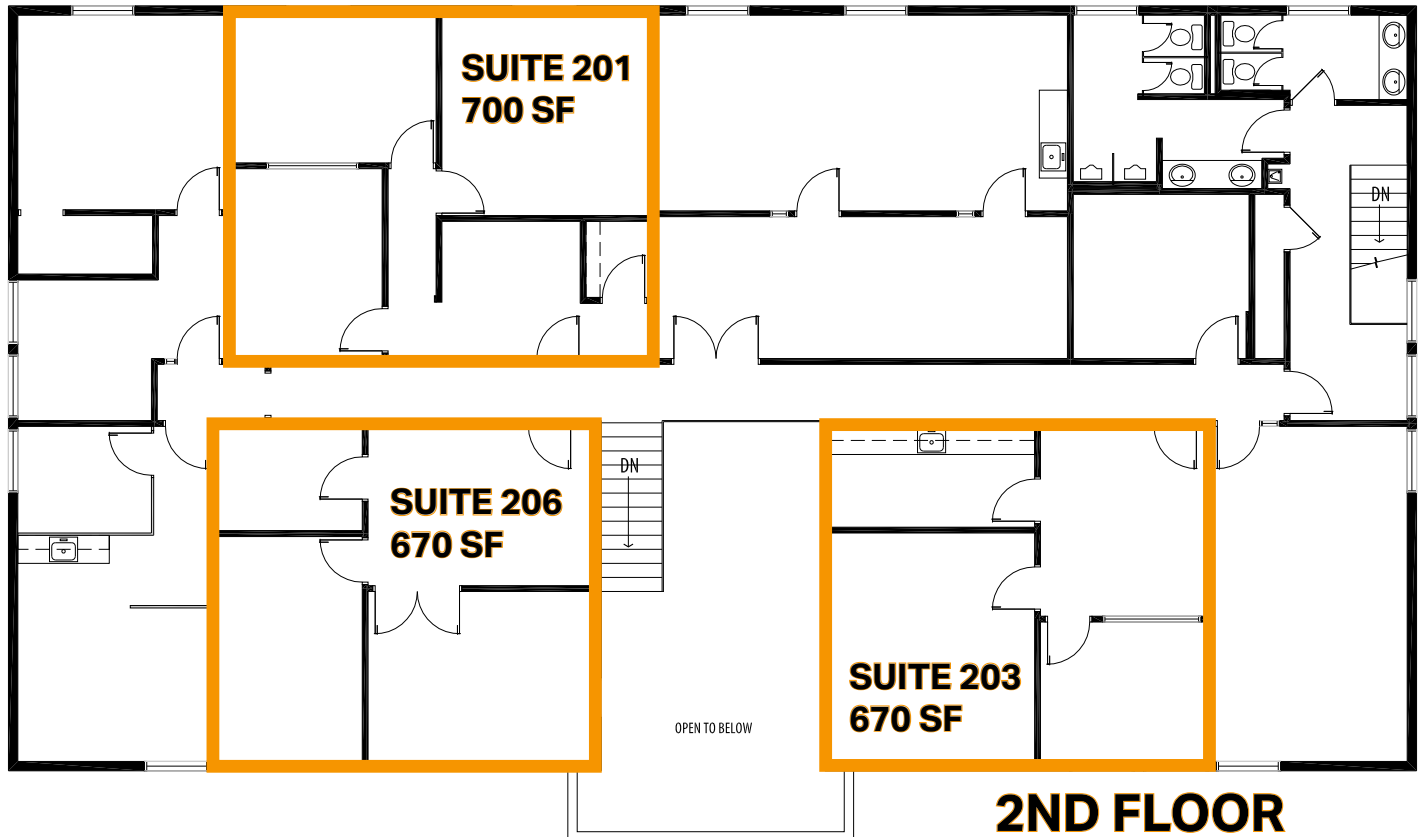
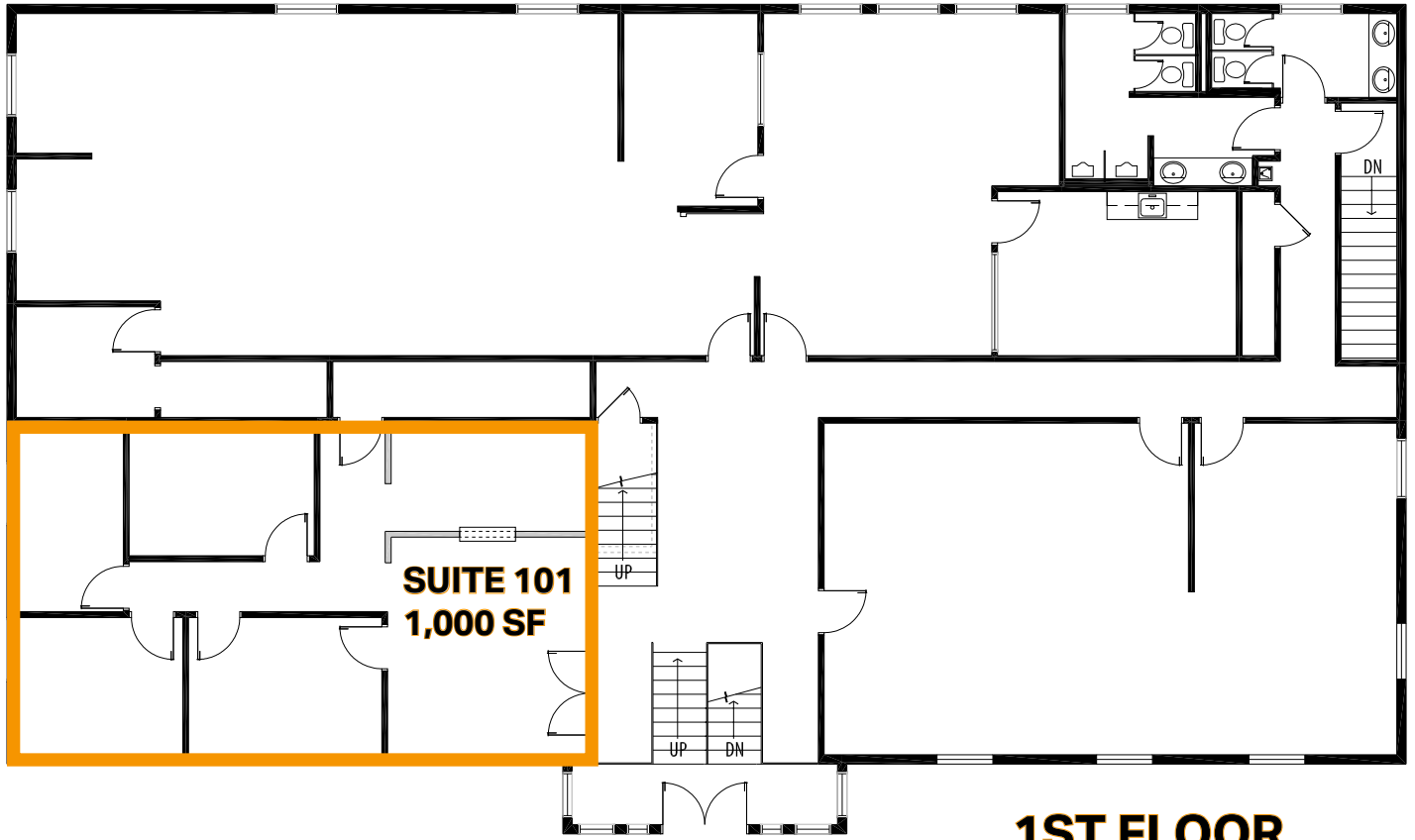


Contact Information

Colin Clancy
Broker | Owner
m: 720.352.5334
e: colin@clancycre.com



CLANCY COMMERCIAL REAL ESTATE



Contact Information

Colin Clancy
Broker | Owner
m: 720.352.5334
e: colin@clancycre.com



CLANCY COMMERCIAL REAL ESTATE