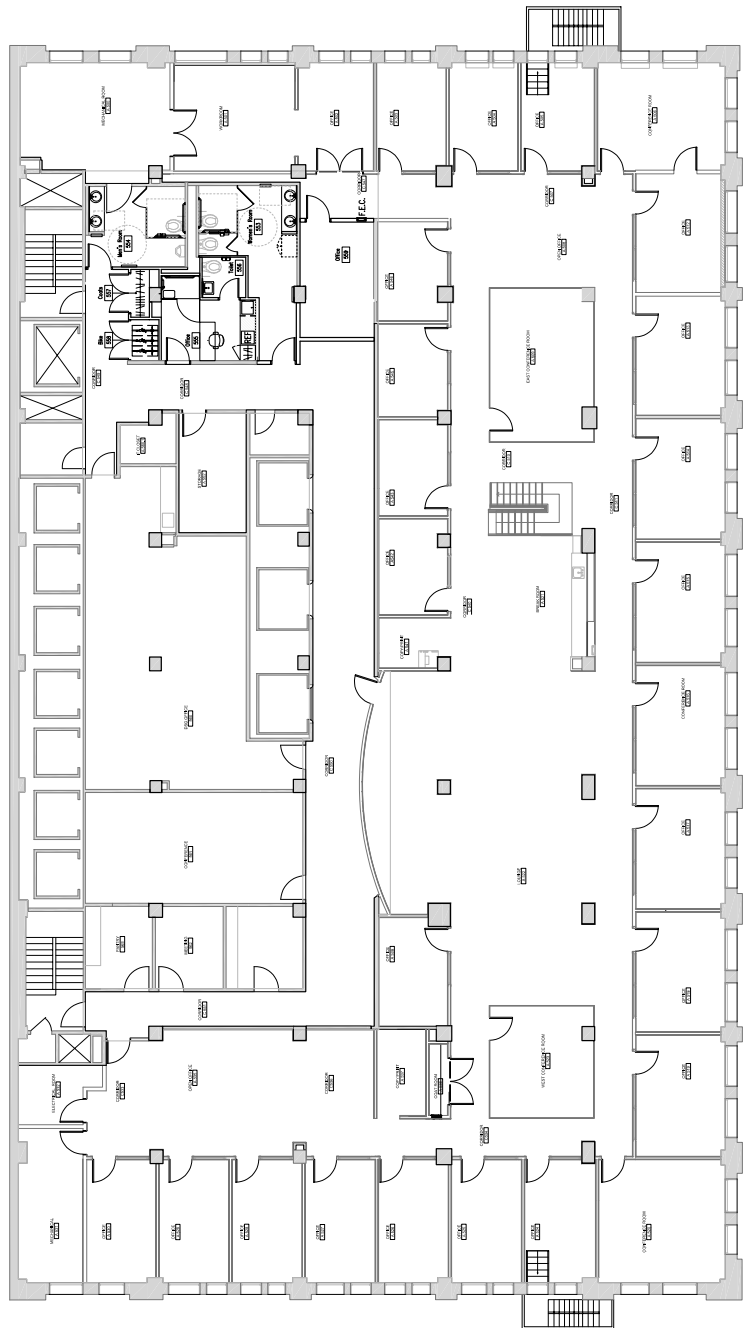


# 5<sup>TH</sup> FLOOR PLAN



## SPACE SPECIFICATIONS

- Entire 5th Floor
  - Fully Furnished Suite
  - ±12,722 RSF
  - 26 Private Offices w/ glass fronts  
*20 on Window Line + 6 Interior Offices*
  - 6 Workstations w/ room to expand
  - Interior Suite w/ Seating for 8 and Kitchenette
  - 4 Conference Rooms w/ 6 to 8-Seats
  - 1 Boardroom w/ 14-Seats and Dedicated Kitchen
  - Open Kitchen and Abundant Soft Seating
  - Fitness Room, Bike Closet, and Private Restroom w/ Shower
  - Work and Storage Rooms, IT Closet
  - Men's and Women's Restrooms
- 10'0" finished ceiling height (11'0" exposed ceiling height)
- Secure elevator access with smartphone app
- Views of Millennium Park and Lake Michigan



*\*Square footage estimated by taking the adjusted ownership percentage of 4.9120% (as per the condo declaration) multiplied by 259,000 RBA*

# 5<sup>TH</sup> FLOOR PHOTO GALLERY

