



# RETAIL SPACE FOR LEASE

4526 N M-37, Middleville, MI

**BRAYDEN VREDEVELD**

616 295 2920

braydenv@workwithMOXIE.com

**MAX GROVER, CCIM**

616 890 7794

maxg@workwithMOXIE.com

# 3 UNITS AVAILABLE

4526 N M-37, Middleville, MI

SPACE	AVAILABLE SF	RATE/MONTH
4624-B	3,314 SF	\$9/SF/YEAR
4624-C	2,200 SF	\$9/SF/YEAR
4624-F	1,960 SF	\$9/SF/YEAR

ALL VACANT & AVAILABLE!



Unit Rate

**\$9**

PER SF/YEAR

**PRICING**

Unit Size

**1,960-3,314**

SQUARE FEET



[workwithMOXIE.com](http://workwithMOXIE.com)

# LISTING INFORMATION



## RETAIL OFFICE SPACE FOR LEASE IN MIDDLEVILLE!

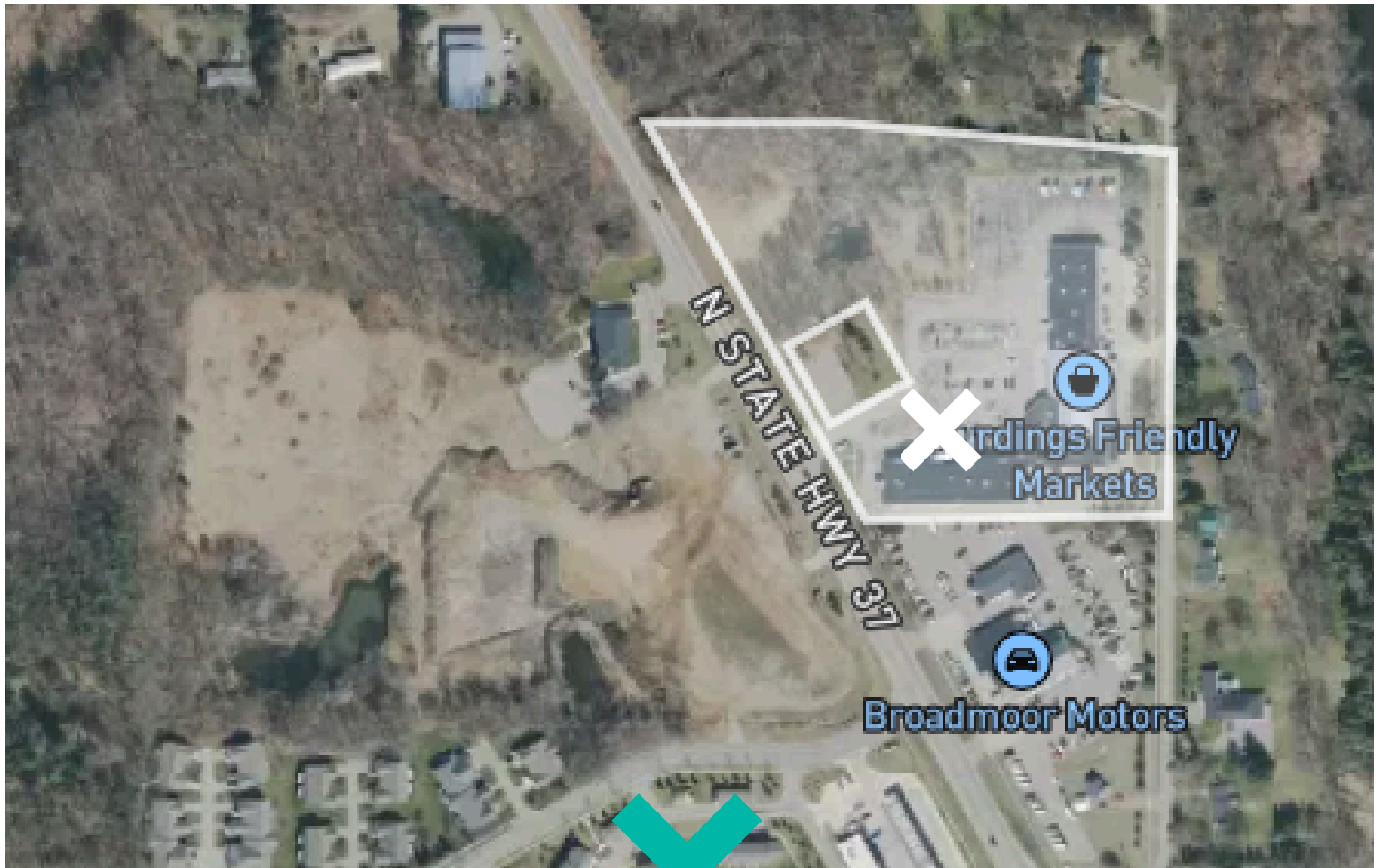
Discover a flexible leasing opportunity in a well-located commercial center in Middleville, ideally positioned with convenient access to M-37 and strong visibility within the local trade area. This property offers a professional setting suited for a wide range of retail, service, or office users looking to establish or expand their presence in the growing Middleville market.

Multiple suites are currently available, including 1,960 square feet, 2,200 square feet, and 3,314 square feet, allowing tenants to choose the space that best fits their operational needs. Each suite offers flexible layouts that can be adapted for a variety of business concepts, providing an ideal solution for both established businesses and growing companies.

The center benefits from ample on-site parking, easy customer access, and a convenient location within a well-established commercial corridor. Positioned just minutes from M-37 and approximately 10 miles from M-6, the property provides strong connectivity to surrounding communities and regional traffic, making it an excellent location for businesses seeking visibility, accessibility, and long-term growth.

TOTAL AVAILABLE AREA	7,474 SF
PRICE/SF	\$9/SF/YEAR
ACREAGE	10.13 ACRES
FLOORS	1
ZONING	C-1 NEIGHBORHOOD COMMERCIAL ZONE





# AERIAL MAPS

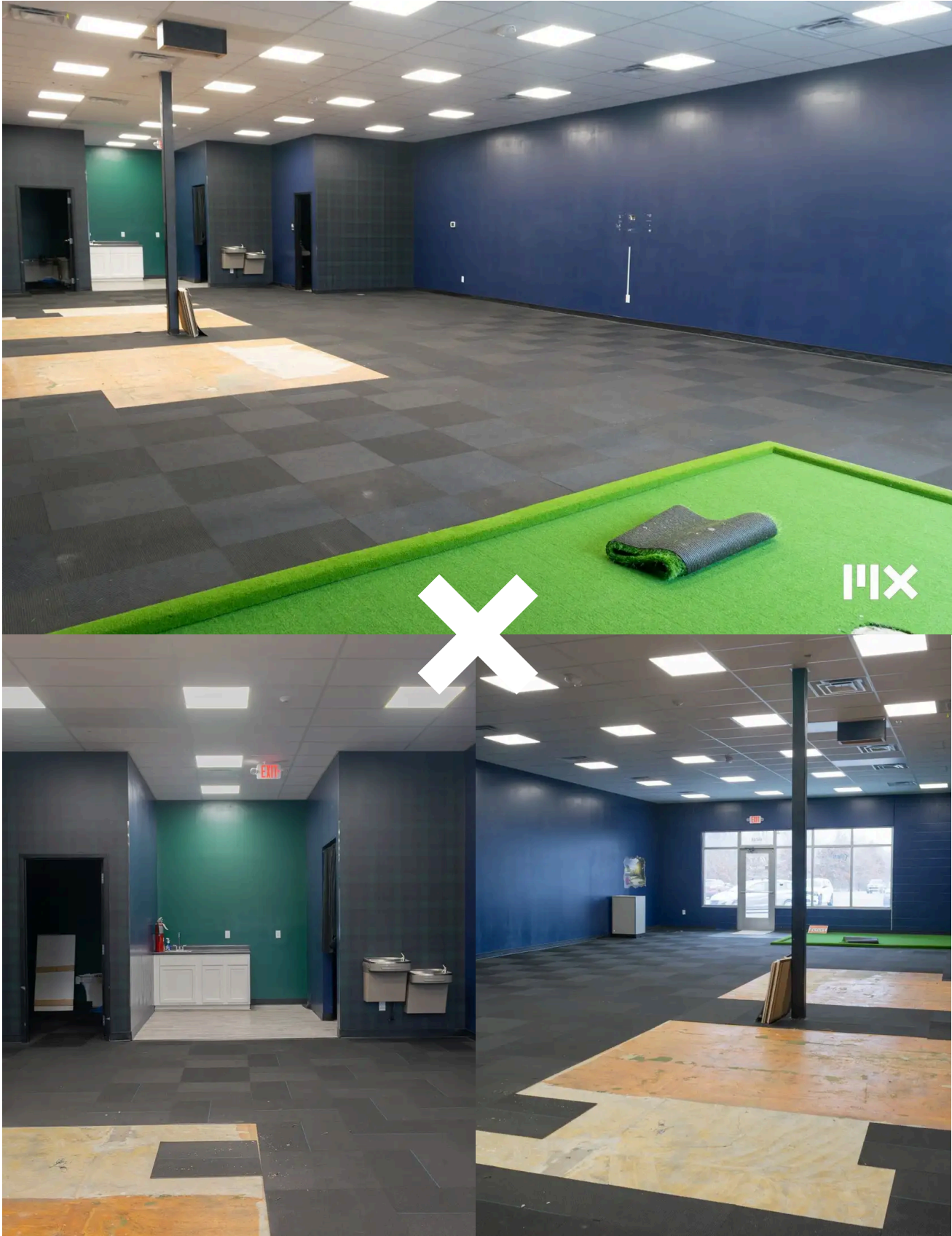
4526 N M-37, Middleville, MI

## DEMOGRAPHICS

	1 MILE	3 MILES	5 MILES
TOTAL POPULATION	4,323	7,725	15,558
MEDIAN AGE	36	37	38
HOUSEHOLDS	1,522	2,723	5,433
MEDIAN INCOME	\$79,167	\$82,837	\$87,397



[workwithMOXIE.com](http://workwithMOXIE.com)



**Moxie**

[workwithMOXIE.com](http://workwithMOXIE.com)



IX



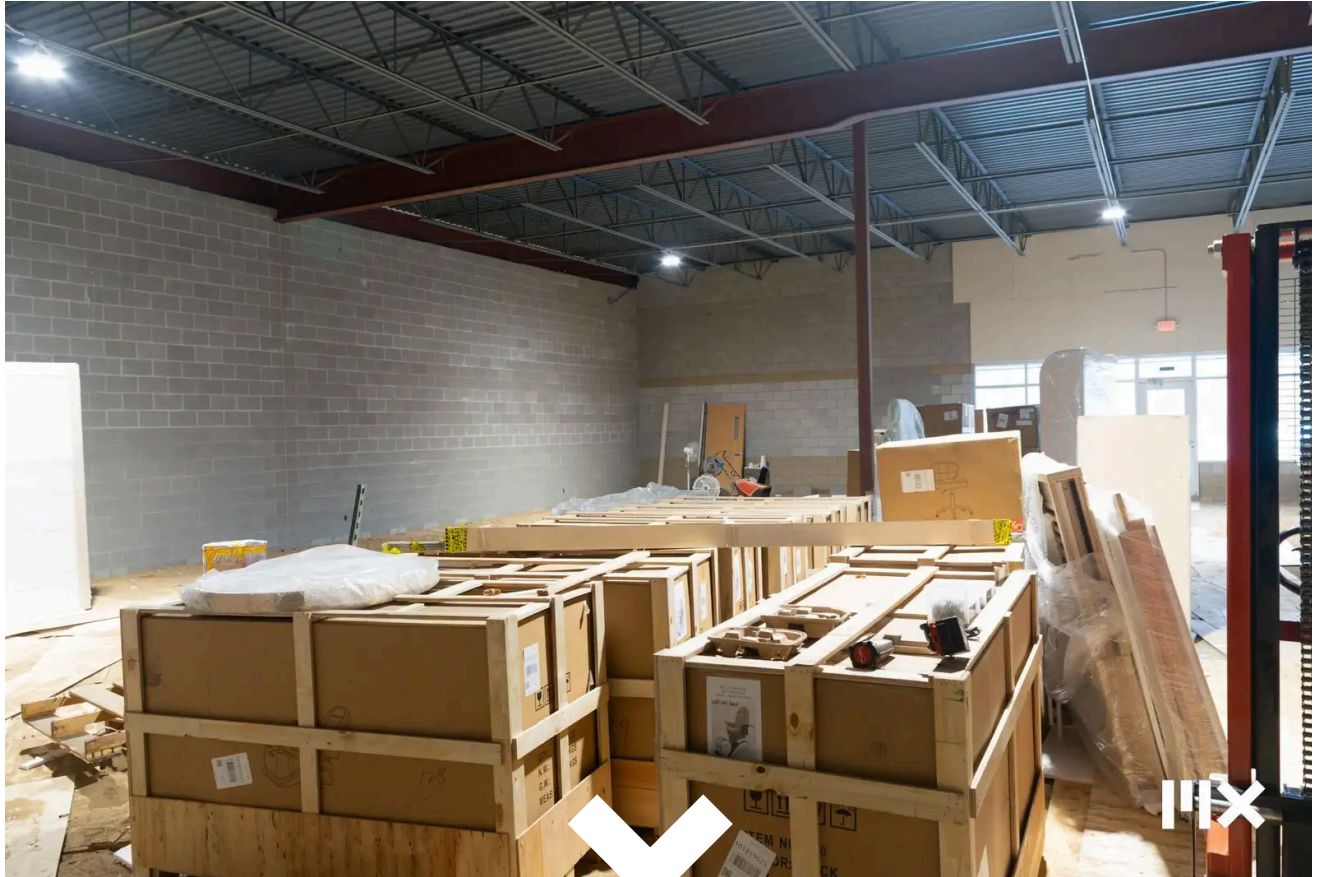
IX

[workwithMOXIE.com](http://workwithMOXIE.com)



**MOXIE**

[workwithMOXIE.com](http://workwithMOXIE.com)



**IX**

[workwithMOXIE.com](http://workwithMOXIE.com)

# CONTACT

**MOXIE IS READY TO MOVE YOU FORWARD.**



# MOXIE

3883 Clay Ave SW, Grand Rapids, MI 49548

MOXIE Holdings, LLC DBA MOXIE Real Estate + Development (hereinafter referred to as "MOXIE") has prepared this Offering Memorandum (the "Memorandum") for informational purposes only. The information contained herein has been obtained from sources believed to be reliable; however, MOXIE makes no representations or warranties, express or implied, as to the accuracy or completeness of such information. All potential investors, tenants, buyers and/ or recipients of this Memorandum are hereby notified to conduct their own independent due diligence and verification of all information contained within. MOXIE shall not be liable for any errors or omissions in the information, or for any damages (whether direct, indirect, consequential, incidental, special, punitive, or otherwise) arising out of or in connection with the furnishing, use of, or reliance upon this Memorandum. This Memorandum is not intended to be, and should not be construed as, an offer to sell or a solicitation of an offer to buy any security or interest in any real estate. This Memorandum is presented in good faith and to the best of MOXIE's knowledge and understanding.

**BRAYDEN VREDEVELD**

616 295 2920

[braydenv@workwithMOXIE.com](mailto:braydenv@workwithMOXIE.com)

**MAX GROVER, CCIM**

616 890 7794

[maxg@workwithMOXIE.com](mailto:maxg@workwithMOXIE.com)



[workwithMOXIE.com](http://workwithMOXIE.com)