



20 Jimmy Place Laverton North VIC

2

Andreas Belbasis of Jason Commercial is pleased to offer for lease to the public market: 20 Jimmy Place Laverton North, VIC 3026.

This exceptional property offers a unique opportunity to lease a spacious industrial warehouse space. The property is conveniently located with easy access to major transport routes such as the West Gate Freeway and Princes Highway, ensuring quick connections to Melbourne CBD and surrounding areas.

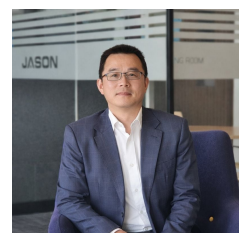
KEY FEATURES INCLUDE:
 Land Size: 190m2(Approx)
 Building Size: 190m2(Approx)
 Car Spaces: 2

[For full version visit the website](https://www.jasonrealestate.com.au/lease/vic/west/laverton-north/commercial/industrial/8516618)

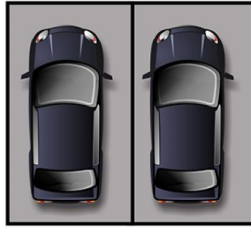
Type : Industrial
Price : CONTACT AGENT
Building Size : 190 sqm
Land Size : 190 sqm
View : <https://www.jasonrealestate.com.au/lease/vic/west/laverton-north/commercial/industrial/8516618>



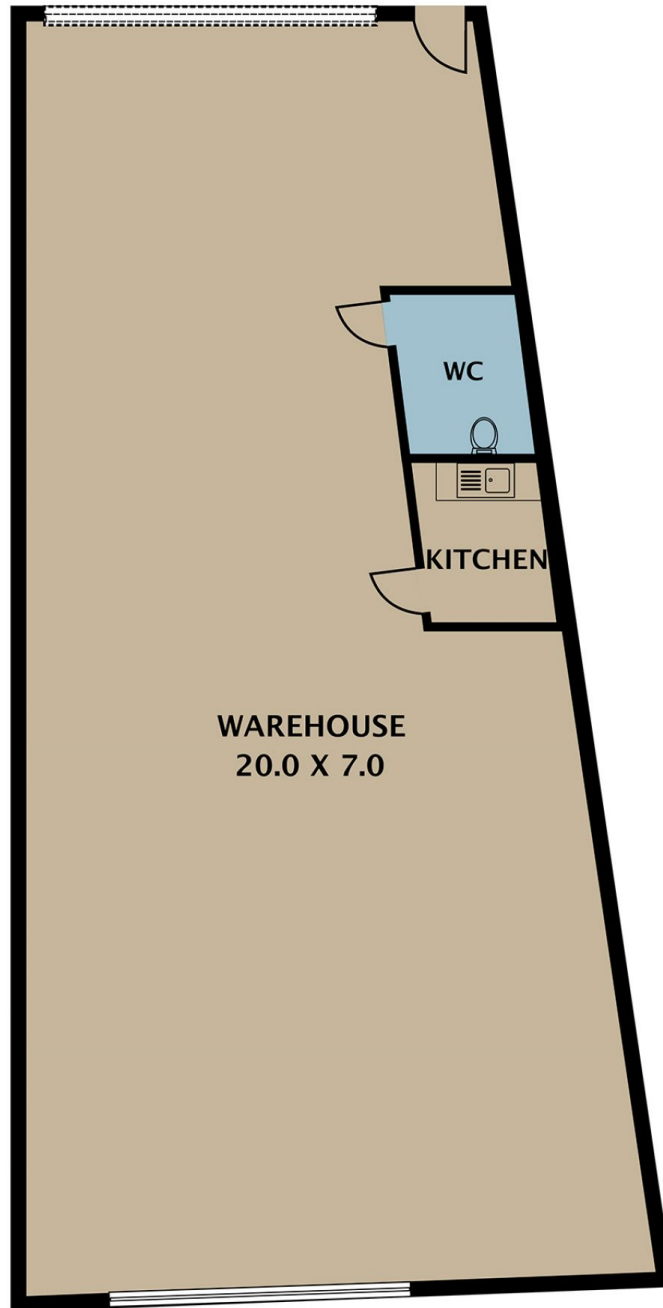
Andreas Belbasis
03 9328 6444



Jerry Lee
03 9328 1444



(NOT IN POSITION)



ROLLER DOOR- H5.2m APPROX.

Disclaimer. Please note plans are indicative only and not drawn to exact scale. All dimensions are approximate. Potential buyers view the property in person.

20 Jimmy Place Laverton North