

Sawgrass Corporate Centre II

1571 Sawgrass Corporate Parkway
Sunrise, FL 33323

OFFICE FOR LEASE

\$25.00 | \$14.72
NNN psf | Op. Exp. psf



Greg Martin

Principal, Managing Director
(954) 903-1815

greg.martin@avisonyoung.com

Justin Cope, SIOR

Principal
(954) 903-3701

justin.cope@avisonyoung.com

Lisa Blumer, CCIM

Principal
(954) 903-3703

lisa.blumer@avisonyoung.com

**AVISON
YOUNG**

About the property

Position your business at Sawgrass Corporate Centre II, a Class A office building in the heart of Sawgrass Corporate Park—one of Sunrise's premier business corridors. This 91,221 SF property delivers a polished, move-in ready environment with immediate access to **I-75, I-595, and the Sawgrass Expressway**, plus **on-site café service, abundant parking (4.5/1,000 SF)**, and walkable proximity to **dining, retail, hotels, and Sawgrass Mills**.



Amenities



Immediate Highway Access

Prime location, minutes from I-75, I-595 & Sawgrass Expressway.



Nearby Amenities

Minutes to dining, retail, hotels & Sawgrass Mills.



High Parking Ratio

4.5 spaces per 1,000 SF for tenants and visitors.



On-Site Café

Convenient on-site food and beverage options.



Greg Martin

Principal, Managing Director
(954) 903-1815

greg.martin@avisonyoung.com

Justin Cope, SIOR

Principal
(954) 903-3701

justin.cope@avisonyoung.com

Lisa Blumer, CCIM

Principal
(954) 903-3703

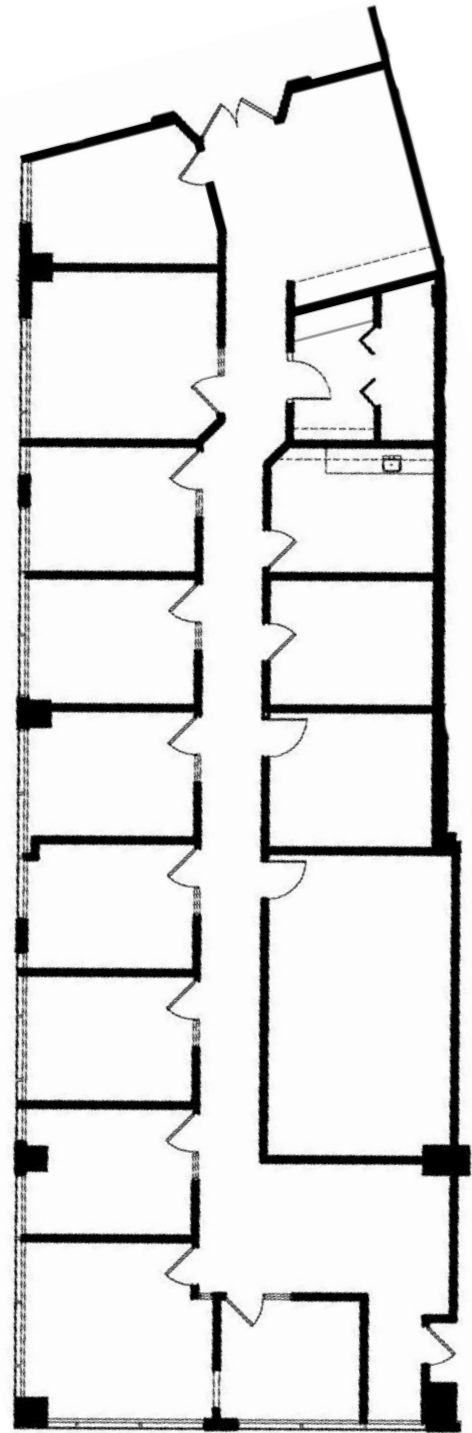
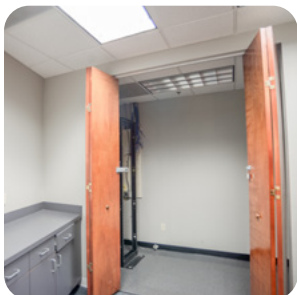
lisa.blumer@avisonyoung.com

**AVISON
YOUNG**

Suite 120

3,910 SF

Gallery



Greg Martin

Principal, Managing Director
(954) 903-1815

greg.martin@avisonyoung.com

Justin Cope, SIOR

Principal
(954) 903-3701

justin.cope@avisonyoung.com

Lisa Blumer, CCIM

Principal
(954) 903-3703

lisa.blumer@avisonyoung.com

**AVISON
YOUNG**

Neighborhood

Food

Flanigan's
Starbucks
Texas de Brazil
McDonald's
Five Guys
Quarterdeck Restaurant

Shopping

Sawgrass Mills a Simon Center
Sam's Club
Publix
IKEA

Banks

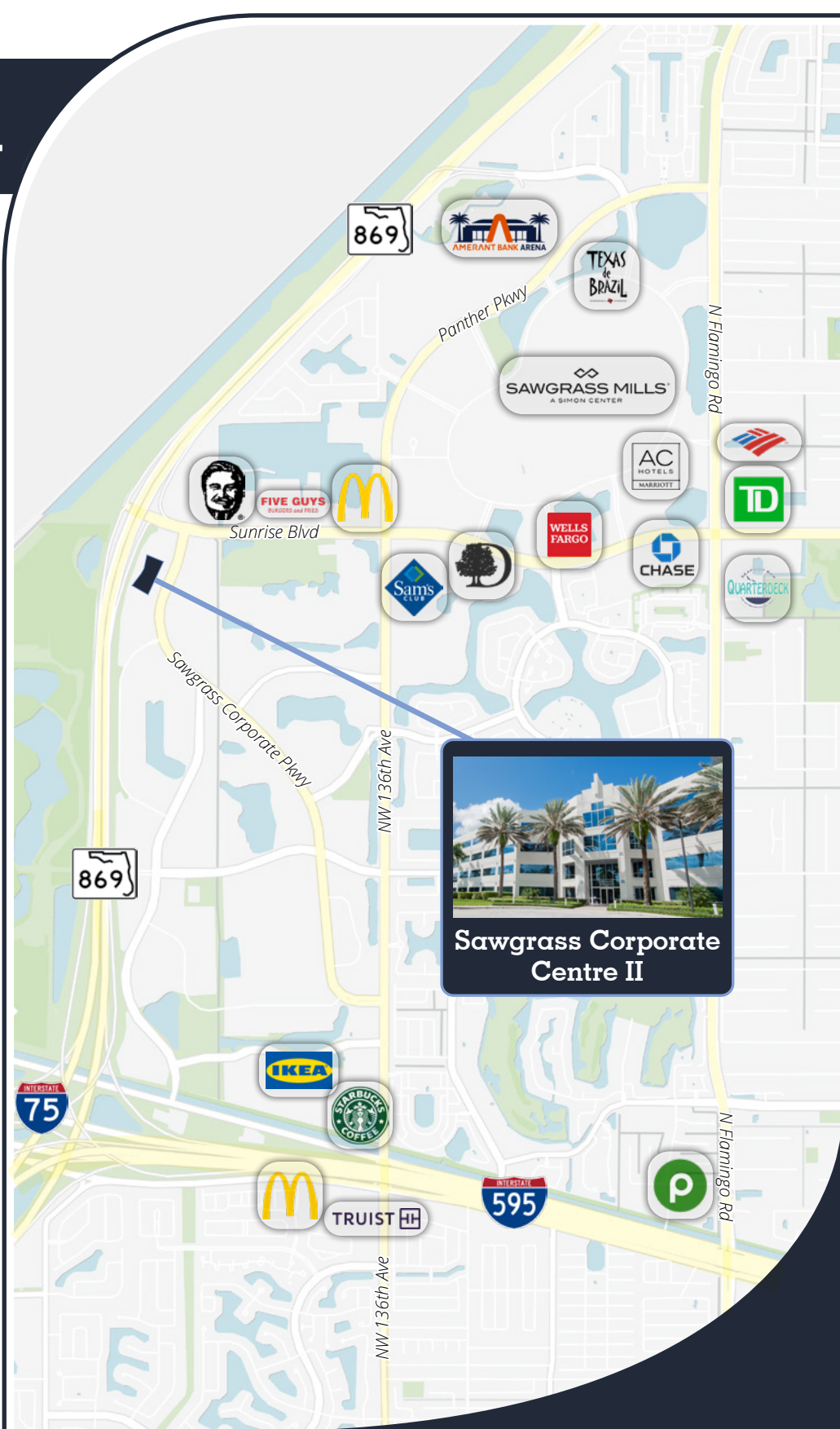
Wells Fargo
Bank Of America
Chase
Truist
TD Bank

Hotels

Double Tree by Hilton
AC Hotels by Marriot

Entertainment

Amerant Bank Arena



Greg Martin

Principal, Managing Director
(954) 903-1815

greg.martin@avisonyoung.com

Justin Cope, SIOR

Principal
(954) 903-3701

justin.cope@avisonyoung.com

Lisa Blumer, CCIM

Principal
(954) 903-3703

lisa.blumer@avisonyoung.com

**AVISON
YOUNG**