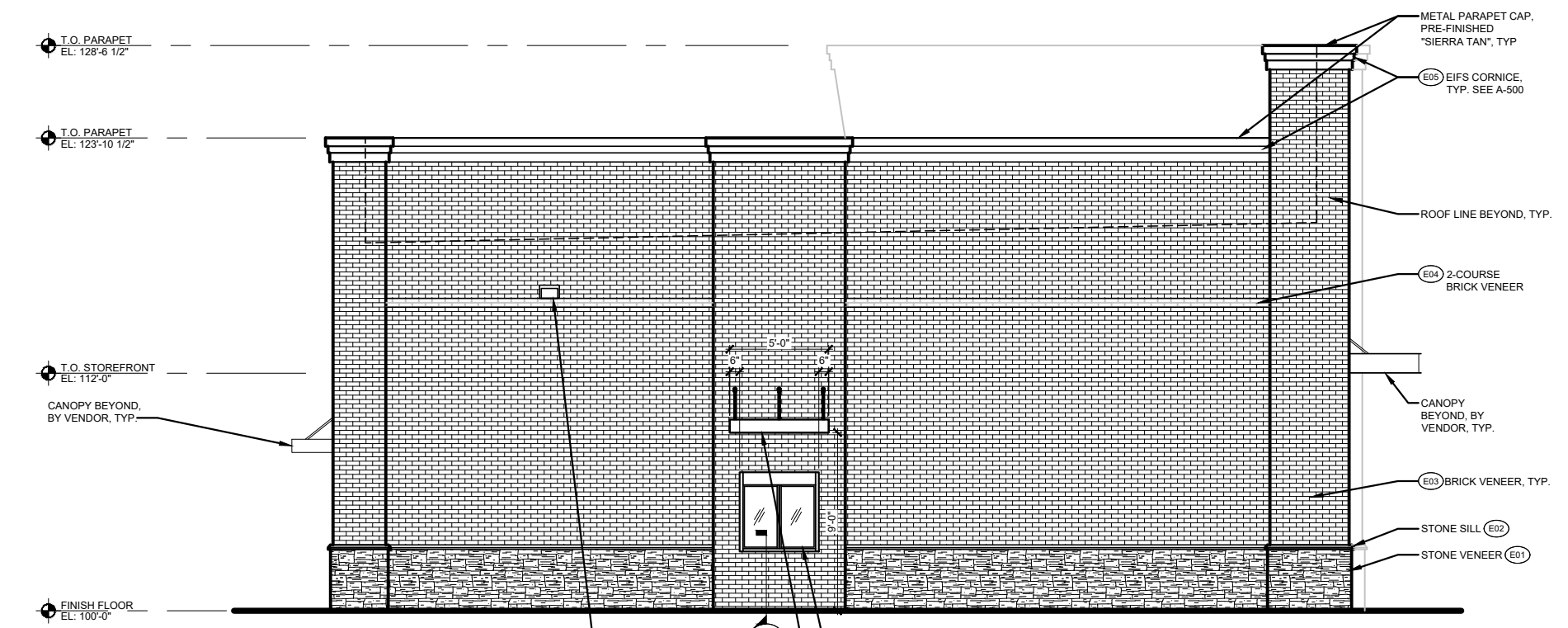
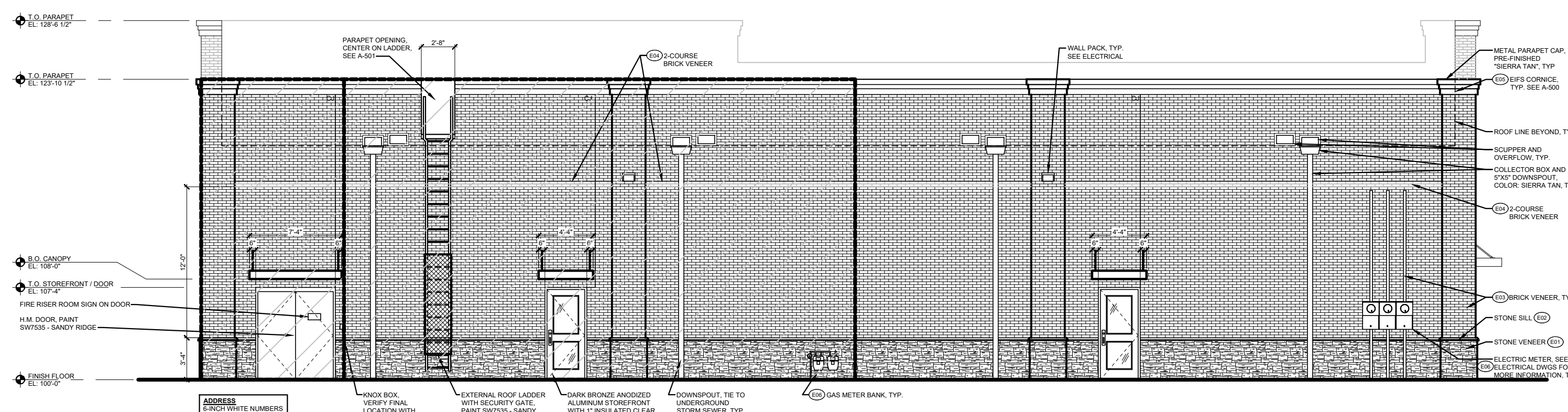


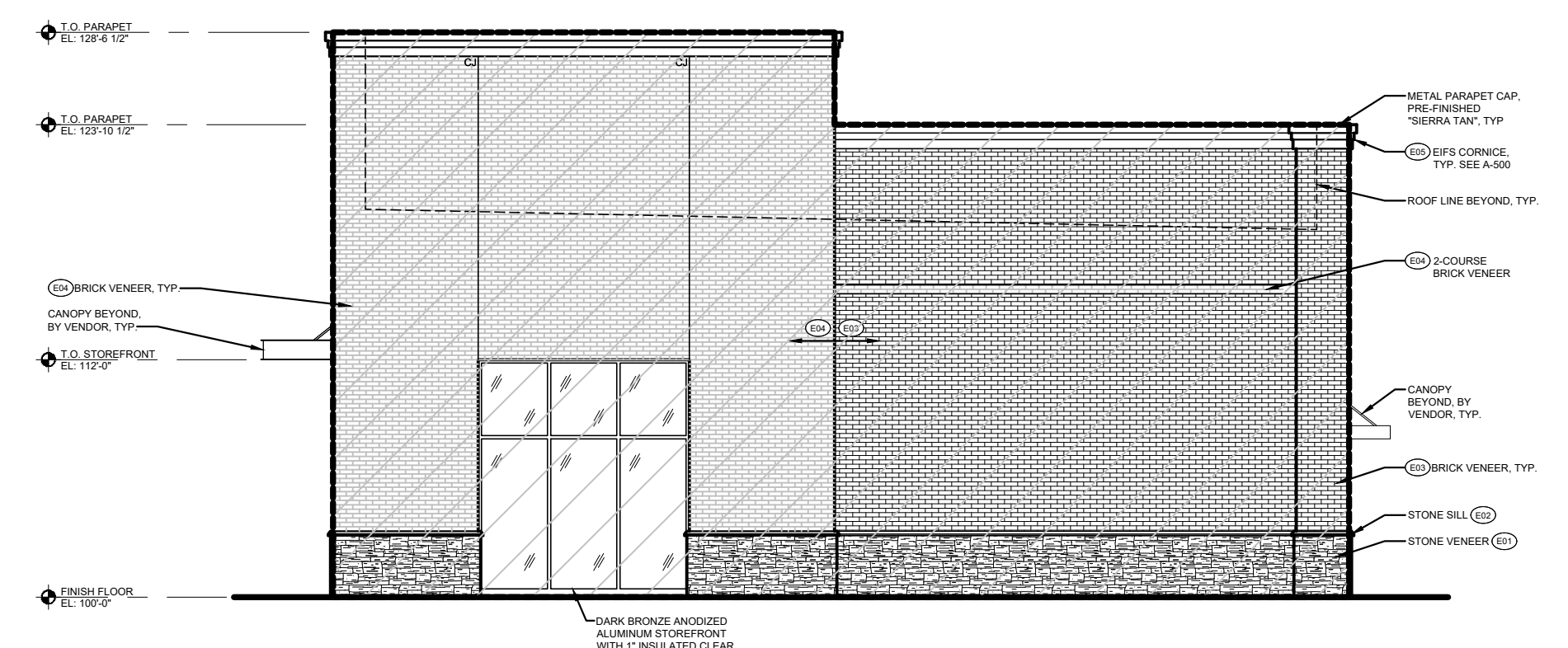
1 ELEVATION  
SCALE: 1/8" = 1'-0"



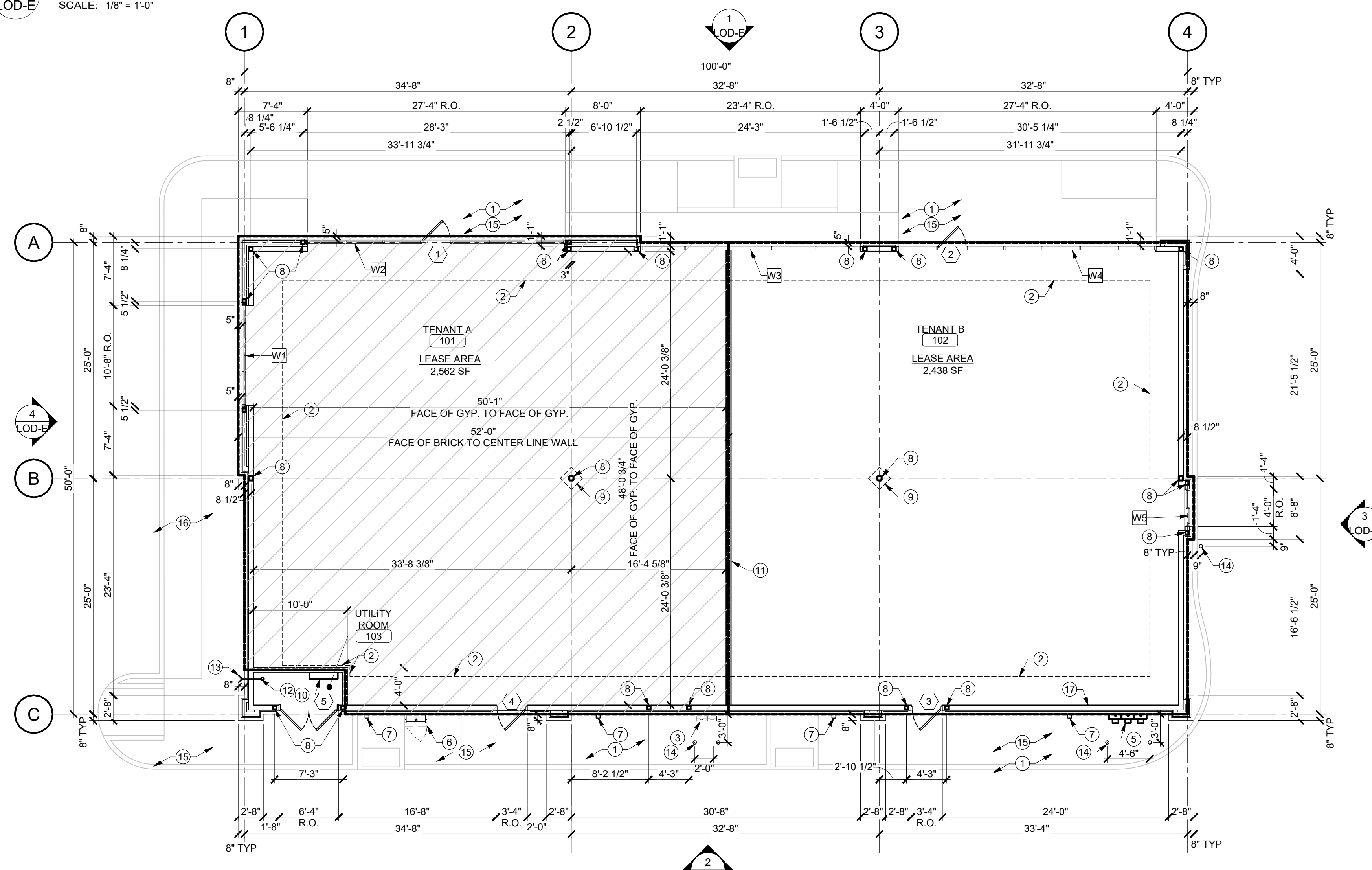
1 ELEVATION  
SCALE: 1/8" = 1'-0"



1 ELEVATION  
SCALE: 1/8" = 1'-0"



1 ELEVATION  
SCALE: 1/8" = 1'-0"



5 FLOOR PLAN  
SCALE: 1/8" = 1'-0"

SYMBOL PLAN KEY NOTES

- SIDEWALK, SEE CIVIL
- EDGE OF SLAB LEAVE-OUT, SEE STRUCTURAL
- GAS METER, SEE MECHANICAL. CENTER PROTECTION BOLLARDS ON GAS METER LOCATION.
- WATER METER, SEE PLUMBING
- ELECTRICAL METER, SEE ELECTRICAL. CENTER PROTECTION BOLLARDS ON ELECTRIC METER LOCATION.
- ROOF ACCESS LADDER, SEE 4/A-501
- DOWNSPOUT, TIE TO UNDERGROUND STORM SEWER, SEE A-300
- SQUARE STEEL COLUMN, SEE STRUCTURAL
- COLUMN BASE, SEE STRUCTURAL
- ELECTRICAL PANEL, SEE ELECTRICAL
- DEMISING WALL TO BE CONSTRUCTED ONCE SLAB IS POURED
- FIRE RISER, FINAL LOCATION AND DESIGN BY FIRE SPRINKLER VENDOR / DESIGNER
- FIRE DEPARTMENT CONNECTION
- 4" STEEL PIPE BOLLARD, 42" TALL, PAINT "SAFETY YELLOW". SEE CIVIL FOR BOLLARD DETAIL.
- APPLY SPECSHIELD WB SEALER TO SIDEWALKS DIRECTLY ADJACENT TO ENTIRE BUILDING.
- PLANTER BAY, SEE CIVIL
- PROVIDE SLEEVE THROUGH MASONRY AND WALL SHEATHING, COORDINATE FINAL SIZE AND LOCATION WITH TENANT INTERIOR DRAWINGS

MARK	EXTERIOR FINISH SCHEDULE	MATERIAL	MFR	COLOR
E01	STONE WAINSCOT	STONE VENEER	CULTURED STONE	CHARCOONAY
E02	STONE SILL	STONE SILL	CULTURED STONE	
E03	LIGHT BRICK	BRICK VENEER	BOWENSTON	400 - MEDIUM GRAY W/ NATURAL TYPE 'N' MORTAR
E04	DARK BRICK	BRICK VENEER	GLDGR GRNAC	DRY GRANITE - 1810LBR W/ DSS 30K-GOLDEN BLUFF MORTAR
E05	EPS	PAINT	SHERWIN WILLIAMS	TO MATCH BRICK 604
E06	GAS & ELECTRIC METER/PIPING	PAINT	SHERWIN WILLIAMS	DW725 'SANDY RIDGE'

GENERAL NOTE: G.C. TO VERIFY ALL PAINT COLORS WITH OWNER.



REVISIONS

CASCO DIVERSIFIED CORPORATION  
ARCH CERTIFICATE OF AUTHORITY: 000329  
EXP. DATE 12/31/2023

KEYMA L. BULLOCK  
LIC. NO. 2004011669  
EXP. DATE 12/31/2022  
PROFESSIONAL OF RECORD  
PHONE: 314.821.1100

Drawn / Checked By:	MDS / JAS
Project Number	2202079
Owner Date	5-18-22
Permit Date	5-18-22
Bid Date	5-18-22

TENANT A  
7/11/23  
LOD-E