

# For Lease

# 2800 Newell Street Los Angeles | CA



Presented By:

**Chris Rohrer**

818.624.1180

chris@pacwestonline.com

DRE#02018754

**Ron Rohrer**

818.309.0628

ron@pacwestonline.com

DRE#01918399

**Randy Rohrer**

818.244.3000

randy@pacwestonline.com

DRE#00672287

**Scott Cox**

818.244.3000

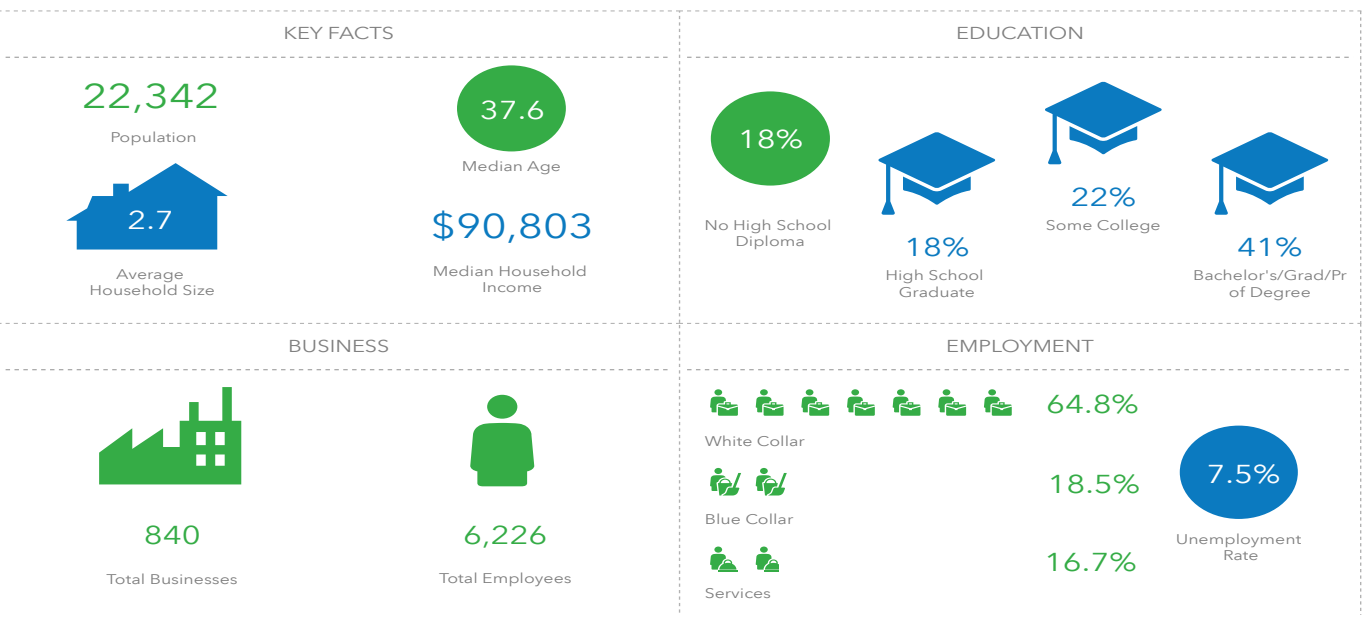
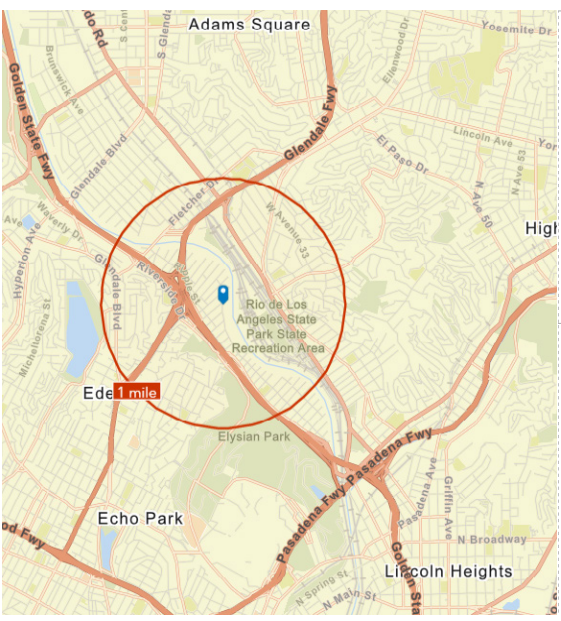
scott@pacwestonline.com

DRE#01070703



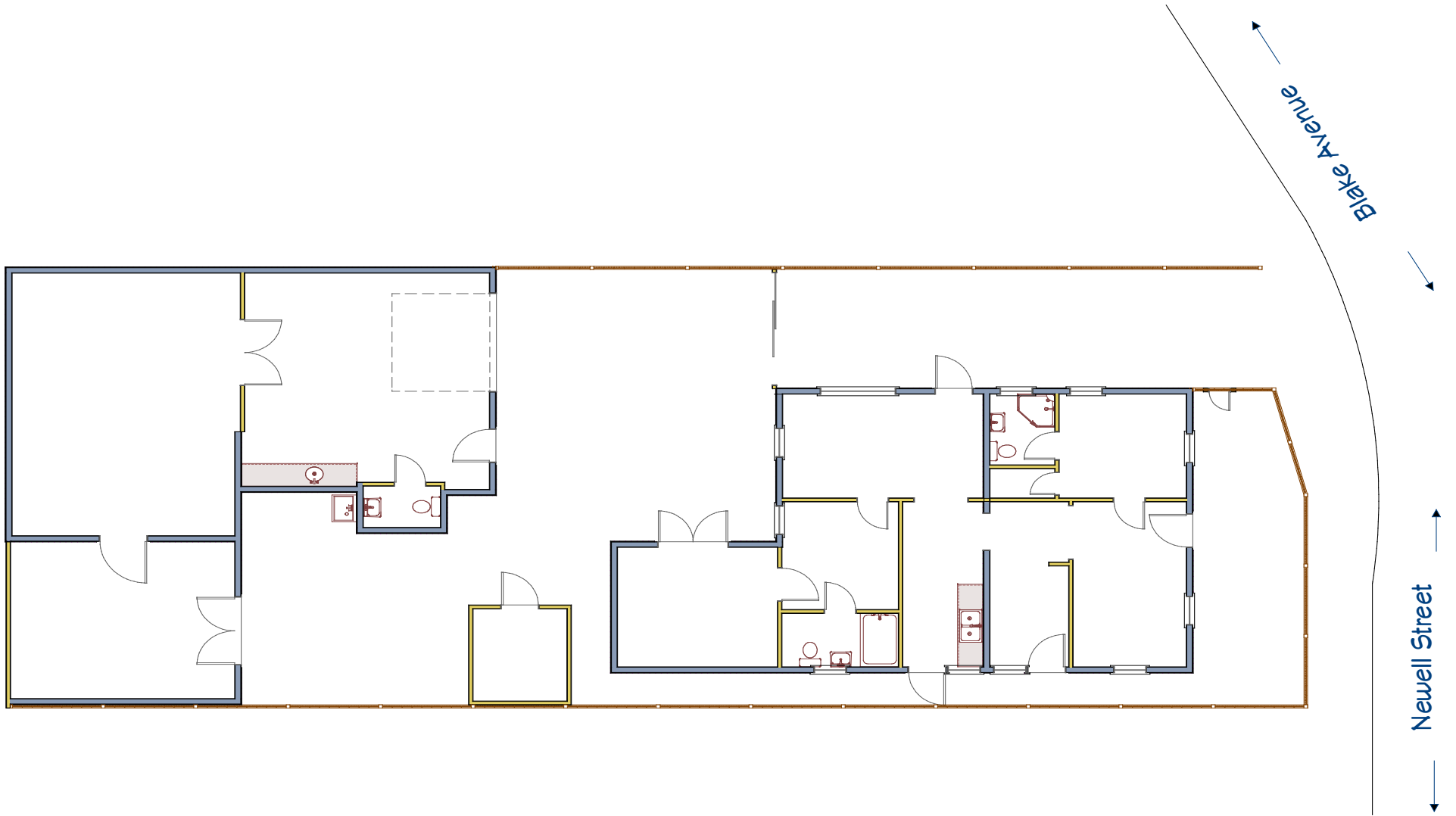
# Property Information

Available SF:	1,932 Square Feet	› Renovated in 2019
Asking Price:	\$6,762 (\$3.50/sf)	› Live Work Opportunity
Land SF:	4,314	› Approx. 1,000 SF Workshop
Zoning:	CM	› 2 Bedroom House / Office
Parking:	2 +	› Great Frogtown Location
Year Built:	1925	› Sky Lights
Power:	200 A; 220 V; 1 Ph	› Glass Aluminum Door: 10' x 10'



The facts contained herein, while not guaranteed as to accuracy, are accurate to the best of our knowledge and belief.

# Floor Plan



# Map Location

## 2800 Newell St



Pacific West Business Properties, Inc.

6624 San Fernando Road Glendale, CA 91201 | 818-244-3000



# Pictures



# Neighborhood



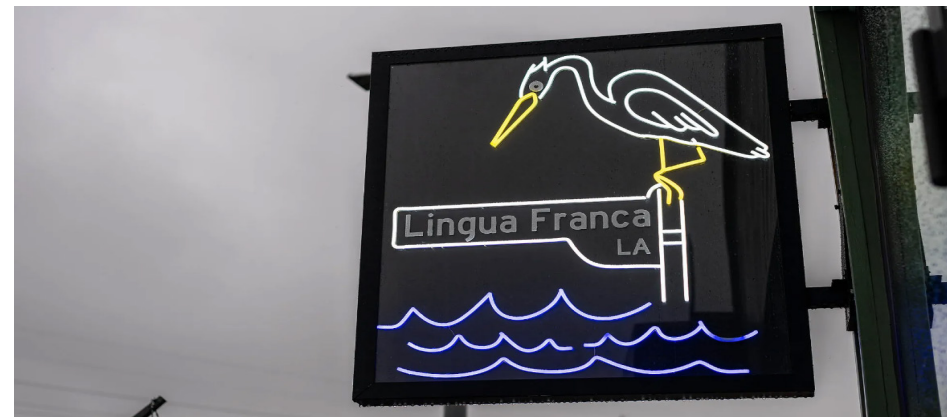
Spoke Cafe



Salazar



Frogtown Brewery



Lingua Franca LA



La Colombe Coffee Roaster



Loreto