



BARNWELL, SC

10555 DUNBARTON BLVD

1.9 ACRES AVAILABLE FOR SALE



PROJECT DETAILS

10555 DUNBARTON BLVD • 1.9 ACRES AVAILABLE FOR SALE • RETAIL

AVAILABLE SPACE

1.9 Acres

TRAFFIC COUNTS

12,800 ADT on Dunbarton Blvd

PROPERTY HIGHLIGHTS

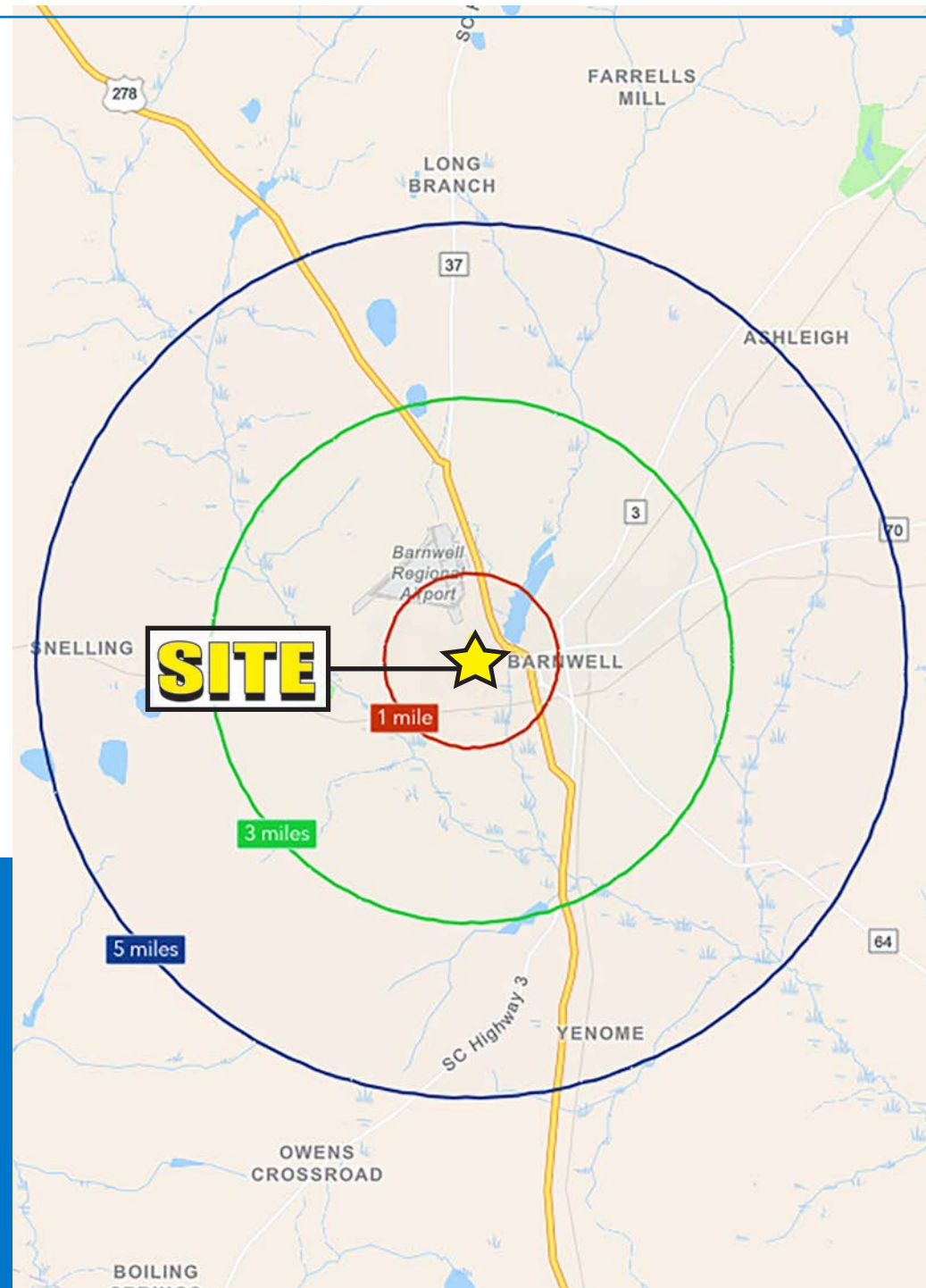
- Former Burger King - Freestanding with drive-thru
- High-visibility location on Dunbarton Blvd
- Site is located on hard corner at signalized intersection of Dunbarton Blvd & Clinton Street
- TMS# 072-06-11-278
- Site Size: 1.9 Acres

LEASE RATE

Call to discuss

COUNTY

Barnwell



DEMOGRAPHICS	1 MILE	3 MILES	5 MILES
TOTAL HOUSEHOLDS	800	2,312	3,604

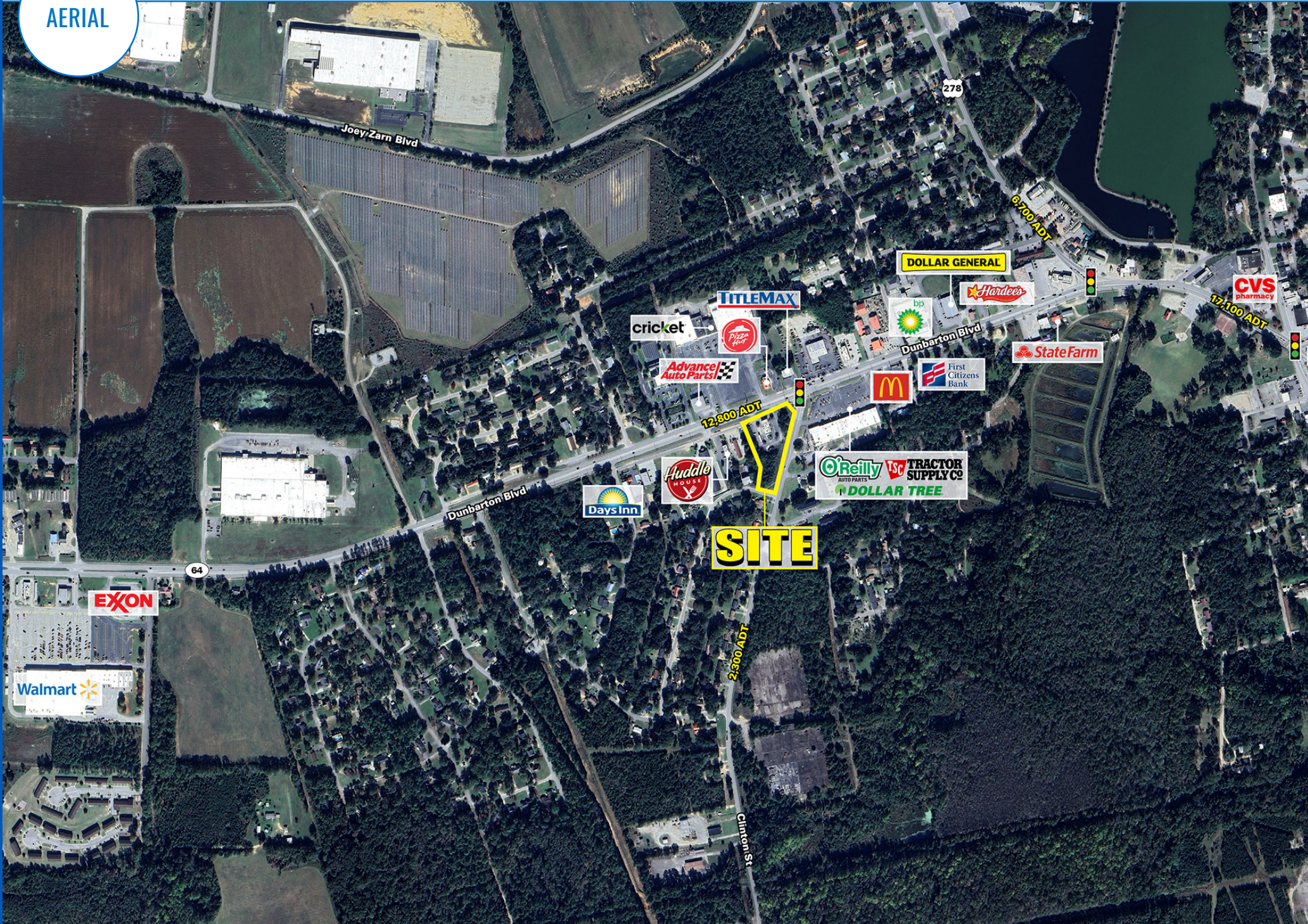


TOTAL POPULATION	1,987	5,848	8,852
------------------	-------	-------	-------

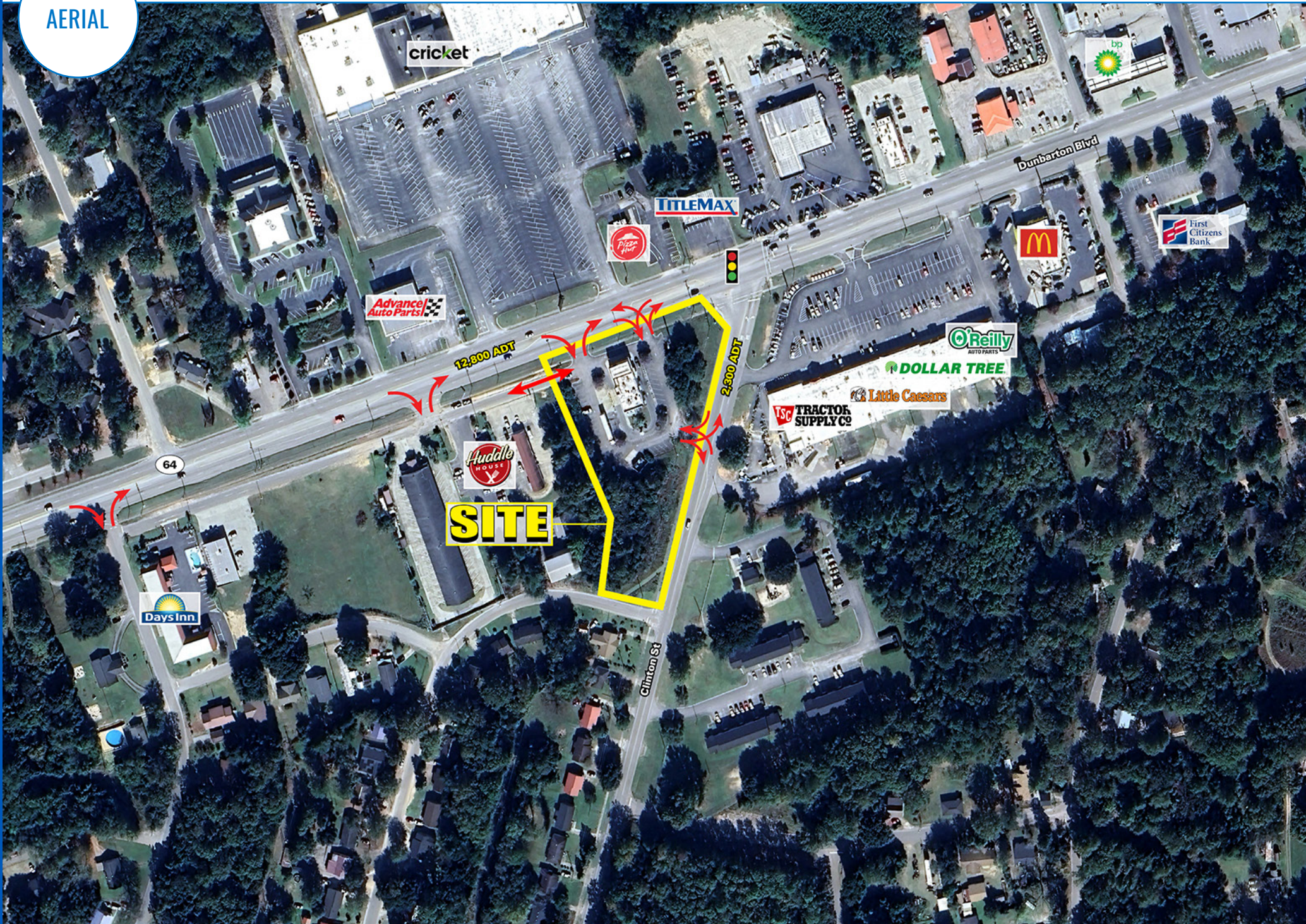


MEDIAN HH INCOME	\$23,236	\$43,131	\$42,938
------------------	----------	----------	----------

AERIAL



AERIAL





SOUTH CAROLINA

BARNWELL

Barnwell is a city in and county seat of Barnwell County, South Carolina, United States, located along U.S. Route 278. Living in Barnwell offers residents a dense suburban feel and most residents own their homes. The Barnwell area is surrounded by pristine waters, including the 100 acres Lake Edgar Brow, so boating, fishing and hunting are very fond activities for the locals. Barnwell County is home to manufacturers both large and small, including Swiss Krono, Augusta Fiberglass Coatings, Inc., Orchids Paper Products, Crane Merchandising, and Dayco. In fact, Swiss Krono announced its fourth expansion at their Barnwell County manufacturing facility in 2015, investing nearly half a billion dollars at that location. Dayco, a leader in the research, design, manufacturing and distribution of belts, tensioners, and pulleys for the automotive industry, has been located in the region for more than 40 years and employs 350 people in Barnwell County. In addition, Barnwell County is home to many small manufacturers in the forest products, agribusiness and other manufacturing sectors, offering excellent industrial sites that are fully equipped and shovel ready, with easy access to the Ports of Charleston and Savannah.



BARNWELL, SC

10555 DUNBARTON BLVD

1.9 ACRES AVAILABLE FOR SALE

JOSEPH PURZE

704.697.1900
JPURZE@ATLANTICRETAIL.COM



WWW.ATLANTICRETAIL.COM

 [LINKEDIN.COM/COMPANY/ATLANTIC-RETAIL-PROPERTIES](https://www.linkedin.com/company/atlantic-retail-properties)

 [INSTAGRAM.COM/ATLANTIC_RETAIL/](https://www.instagram.com/atlantic_retail/)

ALBANY

ATLANTA

BOSTON

WEST PALM BEACH

LOS ANGELES

NEW YORK CITY

ORLANDO

PITTSBURGH

CHARLOTTE

THREE MORROCROFT CENTRE
CHARLOTTE, NC 28211
704.697.1900