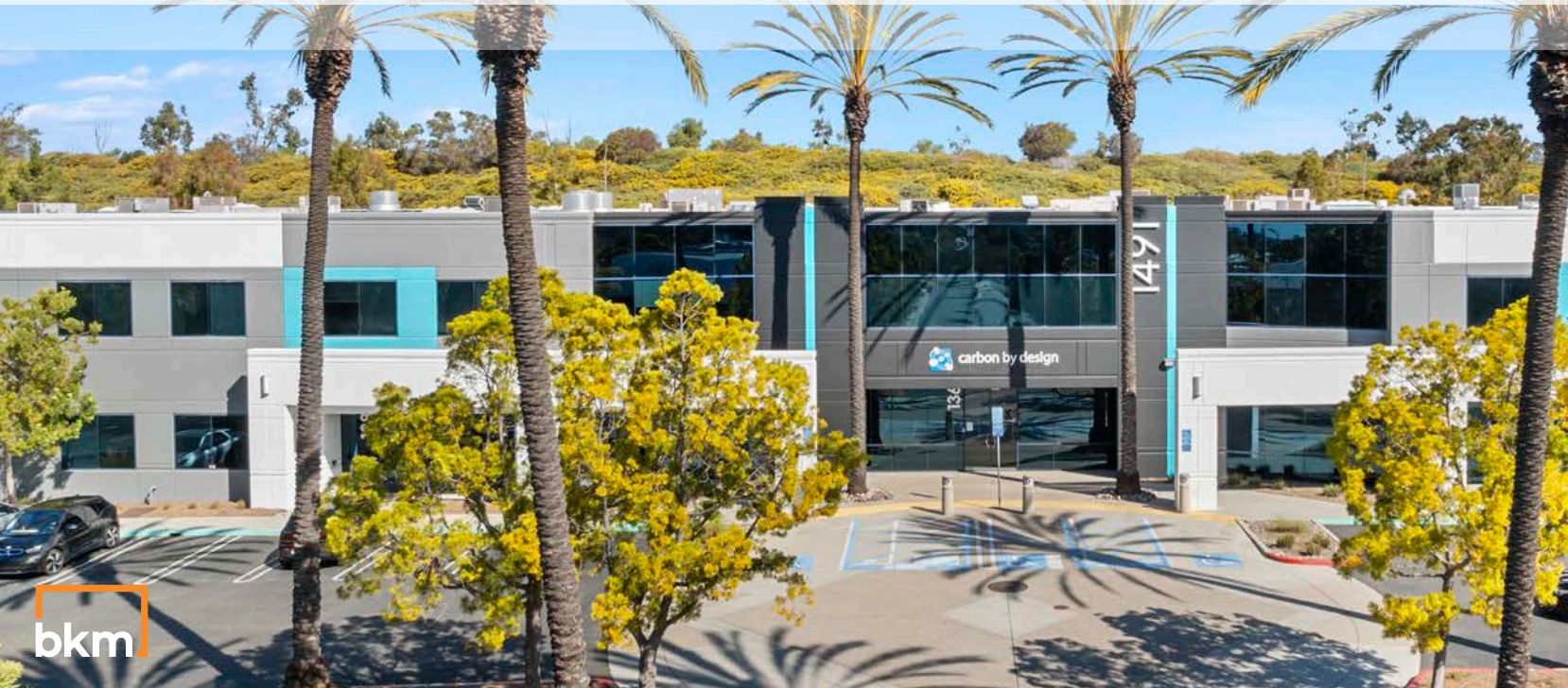


LIONSHEAD LANDING



BROKER BONUS 
&
TENANT INCENTIVE
\$1.00/SF BROKER BONUS

**3 MONTHS FREE ON A
3 YR LEASE**
**(ALL DEALS MUST BE FOR
QUALIFIED TENANTS)**



1483-1499 POINSETTIA AVENUE // VISTA, CA // 92081

FOR MORE INFORMATION:

Conor Boyle
+1 760 458 5739
conor.boyle@cushwake.com
Lic. No. 01813305

Joe Crotty
+1 760 473 1811
joe.crotty@cushwake.com
Lic. No. 01369821

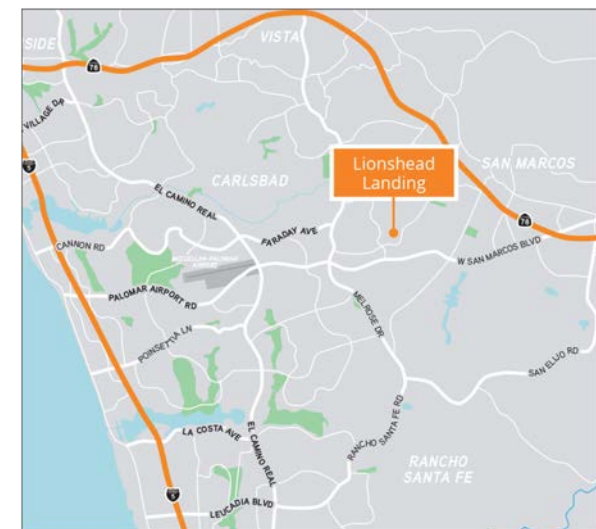
Tyler Stemley
+1 760 908 4270
tyler.stemley@cushwake.com
Lic. No. 02003867

Carson Odabashian
+1 760 431 3836
carson.odabashian@cushwake.com
Lic. No. 02207230

Cushman & Wakefield
12830 El Camino Real, Suite 100
San Diego, CA 92130 | USA
cushmanwakefield.com

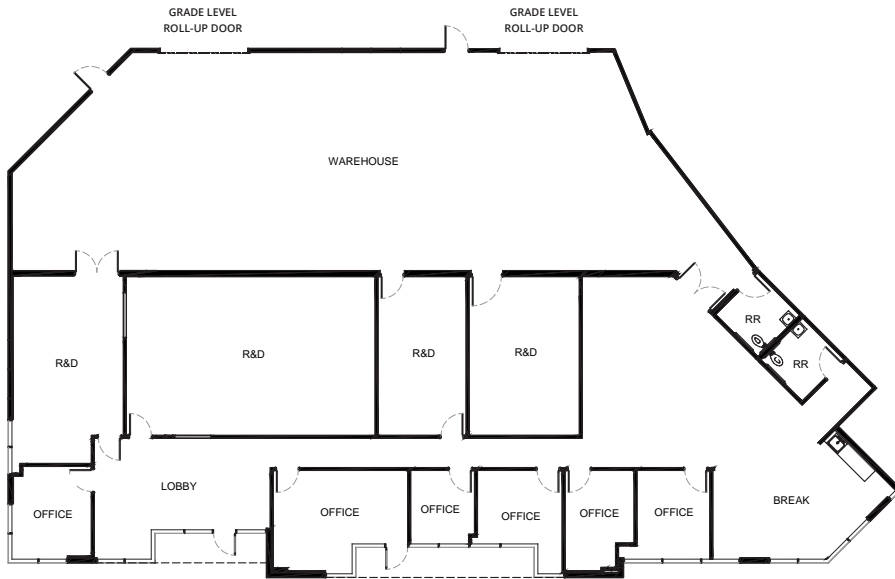
PROPERTY FEATURES

- » Move-in ready industrial/flex units with high-quality office build-out
- » Within walking distance of numerous amenities and trails
- » Strategically located on the border of Vista and Carlsbad
- » Heavy Power Available - 3-Phase, 277/480v
- » 8 EV Charging Stations
- » Loading: 2 x 14' oversized roll up doors
- » Power – superior power in incubation suites
- » Parking 3.0/1,000 SF
- » Warehouse: 16'-18' ceiling heights, fully sprinklered
- » High-image finishes to enhance brand identity



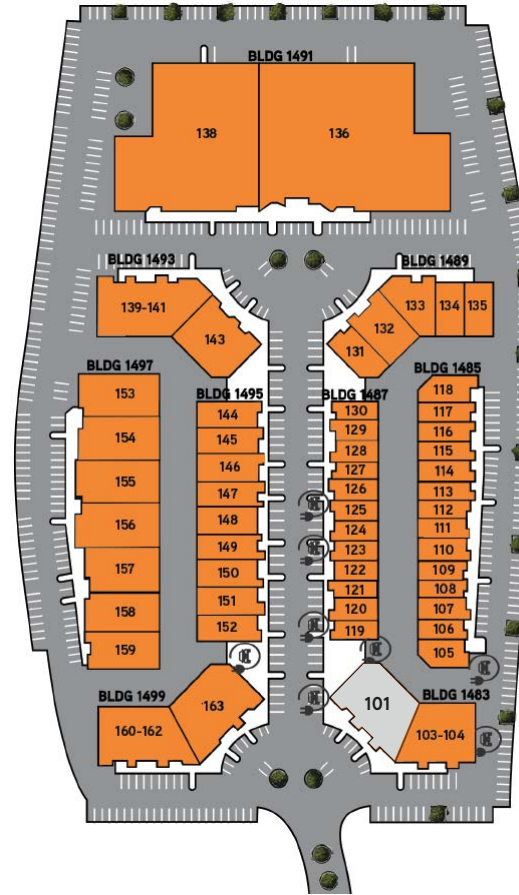
LIONSHEAD LANDING

FLOOR PLAN



*Proposed floor plan

SITE KEY PLAN



FOR MORE INFORMATION:

Conor Boyle
+1 760 458 5739
conor.boyle@cushwake.com
Lic. No. 01813305

Joe Crotty
+1 760 473 1811
joe.crotty@cushwake.com
Lic. No. 01369821

Tyler Stemley
+1 760 908 4270
tyler.stemley@cushwake.com
Lic. No. 02003867

Carson Odabashian
+1 760 431 3836
carson.odabashian@cushwake.com
Lic. No. 02207230

BLDG. 1483 / SUITE 101

- 7,392 SF
- \$1.55/SF + EST. NNN
- MFG/ R&D/ Climate Controlled Warehouse
- Heavy power available - 3-Phase, 277/480v

Cushman & Wakefield
12830 El Camino Real, Suite 100
San Diego, CA 92130 | USA
cushmanwakefield.com



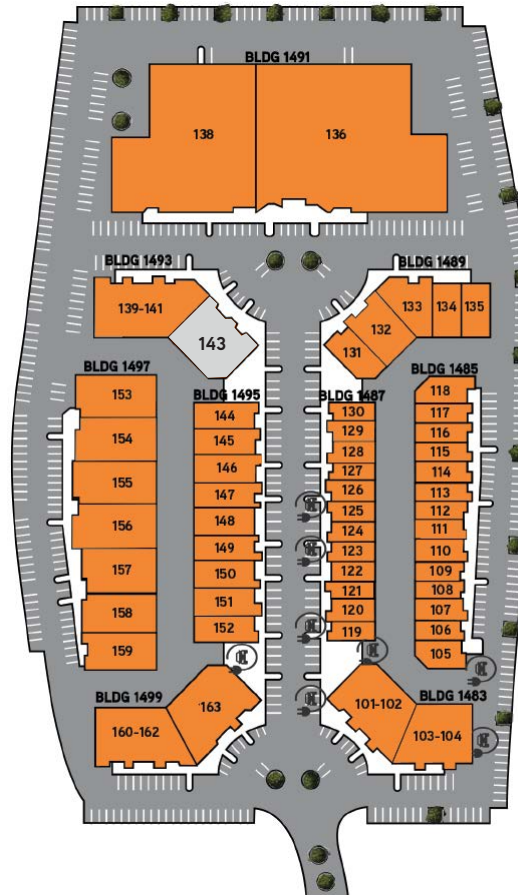
LIONSHEAD LANDING

FLOOR PLAN



*Proposed floor plan

SITE KEY PLAN



FOR MORE INFORMATION:

Conor Boyle
+1 760 458 5739
conor.boyle@cushwake.com
Lic. No. 01813305

Joe Crotty
+1 760 473 1811
joe.crotty@cushwake.com
Lic. No. 01369821

Tyler Stemley
+1 760 908 4270
tyler.stemley@cushwake.com
Lic. No. 02003867

Carson Odabashian
+1 760 431 3836
carson.odabashian@cushwake.com
Lic. No. 02207230

BLDG. 1493 / SUITE 143

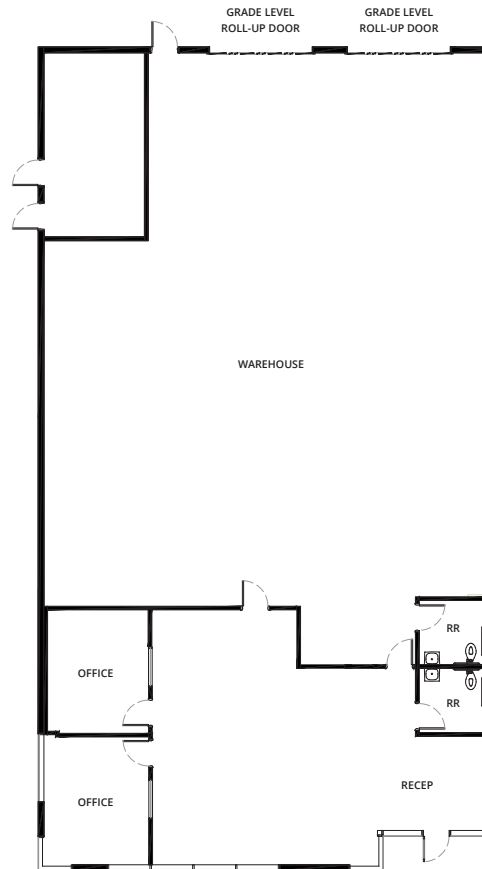
- 5,928 SF
- \$1.55/SF + EST. NNN
- MFG/ R&D/ Climate Controlled Warehouse
- Heavy power available - 3-Phase, 277/480v

Cushman & Wakefield
12830 El Camino Real, Suite 100
San Diego, CA 92130 | USA
cushmanwakefield.com



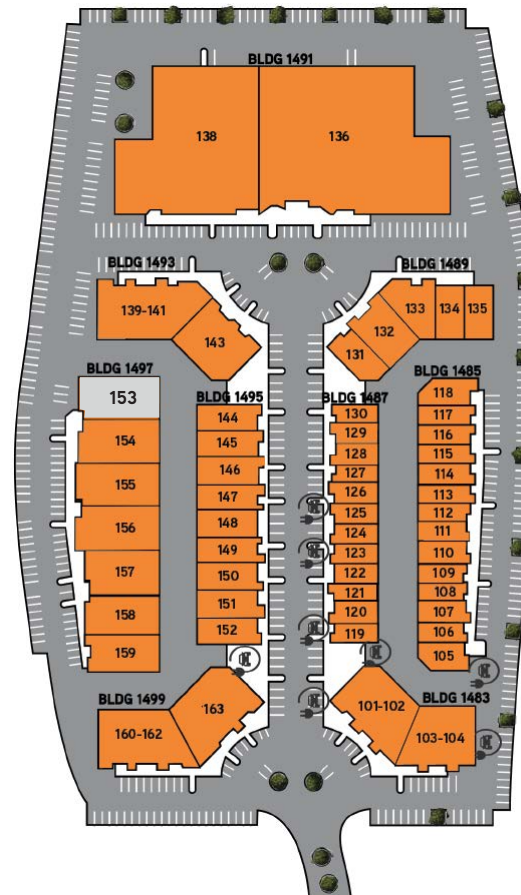
LIONSHEAD LANDING

FLOOR PLAN



**Proposed floor plan*

SITE KEY PLAN



FOR MORE INFORMATION:

Conor Boyle
+1 760 458 5739
conor.boyle@cushwake.com
Lic. No. 01813305

Joe Crotty
+1 760 473 1811
joe.crotty@cushwake.com
Lic. No. 01369821

Tyler Stemley
+1 760 908 4270
tyler.stemley@cushwake.com
Lic. No. 02003867

Carson Odabashian
+1 760 431 3836
carson.odabashian@cushwake.com
Lic. No. 02207230

BLDG. 1497 / SUITE 153

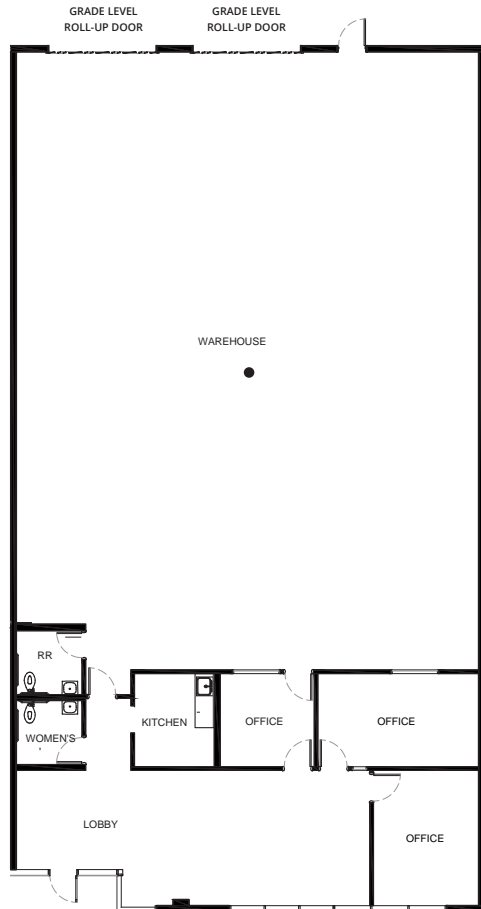
- 4,750 SF
- \$1.55/SF + EST. NNN
- MFG/ R&D/ Climate Controlled Warehouse
- Heavy power available - 3-Phase, 277/480v

Cushman & Wakefield
12830 El Camino Real, Suite 100
San Diego, CA 92130 | USA
cushmanwakefield.com



LIONSHEAD LANDING

FLOOR PLAN

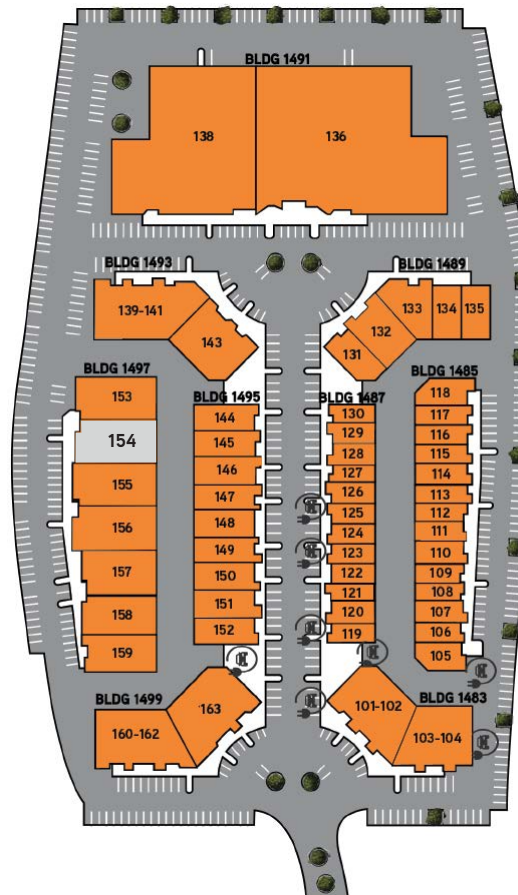


*Proposed floor plan

BLDG. 1497 / SUITE 154

- 5,032 SF
- \$1.55/SF + EST. NNN
- MFG/ R&D/ Climate Controlled Warehouse
- Floor drain located in the middle of warehouse
- Heavy power available - 3-Phase, 277/480v

SITE KEY PLAN



FOR MORE INFORMATION:

Conor Boyle
+1 760 458 5739
conor.boyle@cushwake.com
Lic. No. 01813305

Joe Crotty
+1 760 473 1811
joe.crotty@cushwake.com
Lic. No. 01369821

Tyler Stemley
+1 760 908 4270
tyler.stemley@cushwake.com
Lic. No. 02003867

Carson Odabashian
+1 760 431 3836
carson.odabashian@cushwake.com
Lic. No. 02207230

Cushman & Wakefield
12830 El Camino Real, Suite 100
San Diego, CA 92130 | USA
cushmanwakefield.com



LIONSHEAD LANDING

CORPORATE NEIGHBORS



PODS

UNITE HYATT

BOOTHCRAFTERS INC.
Custom Exhibit Solutions

BACHEM

COX

US FOODS

RAYZIST
The Retail Store

HATCH
OUTDOORS

WatkinsWellness

roomors
HOME FURNISHINGS

Exagen
Patient Focused. Discovery Driven.

PRIMARCH
MANUFACTURING

leidos

ADS
GOLF

BATTLEMAGE
BREWING COMPANY

Sullivan
Since 1911
Moving & Storage

TARGET

CS ILLUMINATION
NORTH COUNTY SAN DIEGO
THE WALL
CLIMBING GYM

JON RENAU
EASHAIR

2.6 miles

THE SQUARE
at THE SQUARE

TESLA

MBE M
The Miniature Engineering
Craftsmanship Museum

2.1 miles

PIZZA PORT
BREWING CO.

LIONSHEAD
LANDING

LOCAL ROOTS
KOMBUCHA

LIONSHEAD LANDING



FOR MORE INFORMATION:

Conor Boyle
+1 760 458 5739
conor.boyle@cushwake.com
Lic. No. 01813305

Joe Crotty
+1 760 473 1811
joe.crotty@cushwake.com
Lic. No. 01369821

Tyler Stemley
+1 760 908 4270
tyler.stemley@cushwake.com
Lic. No. 02003867

Carson Odabashian
+1 760 431 3836
carson.odabashian@cushwake.com
Lic. No. 02207230

Cushman & Wakefield
12830 El Camino Real, Suite 100
San Diego, CA 92130 | USA
cushmanwakefield.com



©2026 Cushman & Wakefield. All rights reserved. The material in this presentation has been prepared solely for information purposes, and is strictly confidential. Any disclosure, use, copying or circulation of this presentation (or the information contained within it) is strictly prohibited, unless you have obtained Cushman & Wakefield's prior written consent. The views expressed in this presentation are the views of the author and do not necessarily reflect the views of Cushman & Wakefield. Neither this presentation nor any part of it shall form the basis of, or be relied upon in connection with any offer, or act as an inducement to enter into any contract or commitment whatsoever. NO REPRESENTATION OR WARRANTY IS GIVEN, EXPRESS OR IMPLIED, AS TO THE ACCURACY OF THE INFORMATION CONTAINED WITHIN THIS PRESENTATION, AND CUSHMAN & WAKEFIELD IS UNDER NO OBLIGATION TO SUBSEQUENTLY CORRECT IT IN THE EVENT OF ERRORS.