

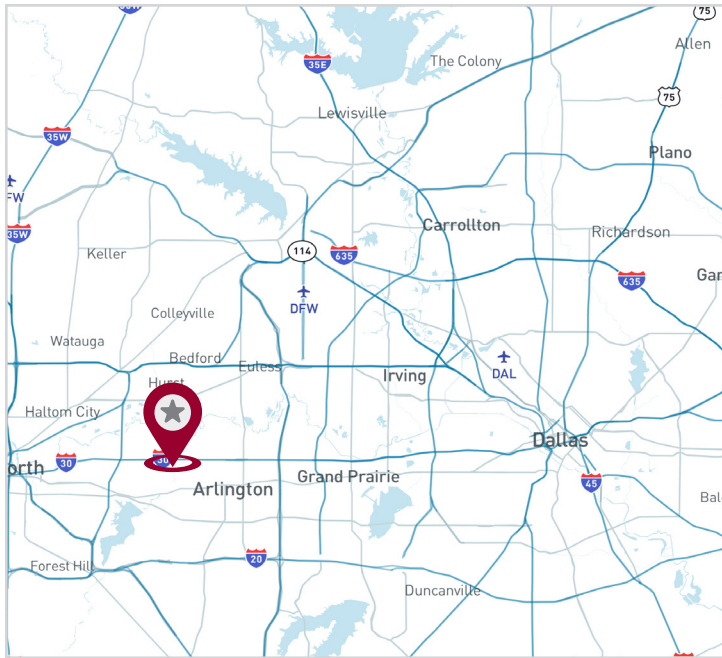
FOR SALE

14.28 ACRES



HIGH VISIBILITY FROM I-30

1121-1137 Morrison Dr & 7700 East Fwy
Fort Worth, TX 76120



AVAILABILITY HIGHLIGHTS

- Excellent Highway Visibility
±430 FT of I-30 Frontage
- Platted for 5 Residential lots
- Flexible for Residential/ Commercial (Zoned "E" Neighborhood Commercial)
- 10 minutes to Downtown Fort Worth
- 20 Minutes to DFW Airport
- Conveniently Located Near Multiple Thoroughfares & Highways
- Sale Price - \$3,400,000

FOR PURCHASE INFORMATION:

Robert Miller
Director

rmiller@lee-associates.com
817.807.2354

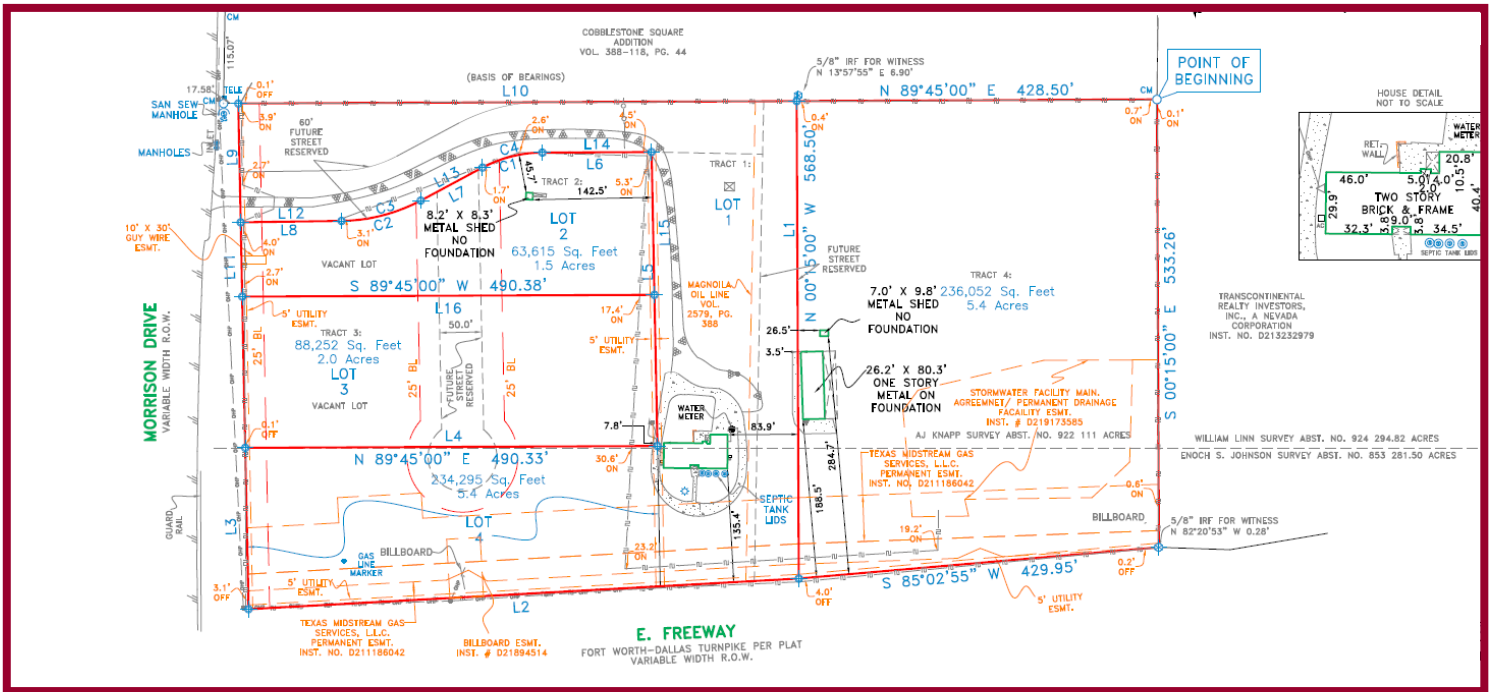
PURCHASING:

LEE & ASSOCIATES
COMMERCIAL REAL ESTATE SERVICES

14.28 AC

FOR SALE

LOCATION



All information furnished regarding property for sale, rental or financing is from sources deemed reliable, but no warranty or representation is made to the accuracy thereof and same is submitted to errors, omissions, change of price, rental or other conditions prior to sale, lease or financing or withdrawal without notice. No liability of any kind is to be imposed on the broker herein.

FOR PURCHASE INFORMATION:

Robert S. Miller
Director
rmiller@lee-associates.com
817.807.2354

PURCHASING

LEE & ASSOCIATES
COMMERCIAL REAL ESTATE SERVICES

14950 Quorum Dr, Suite 100
972-934-4000
lee-associates.com