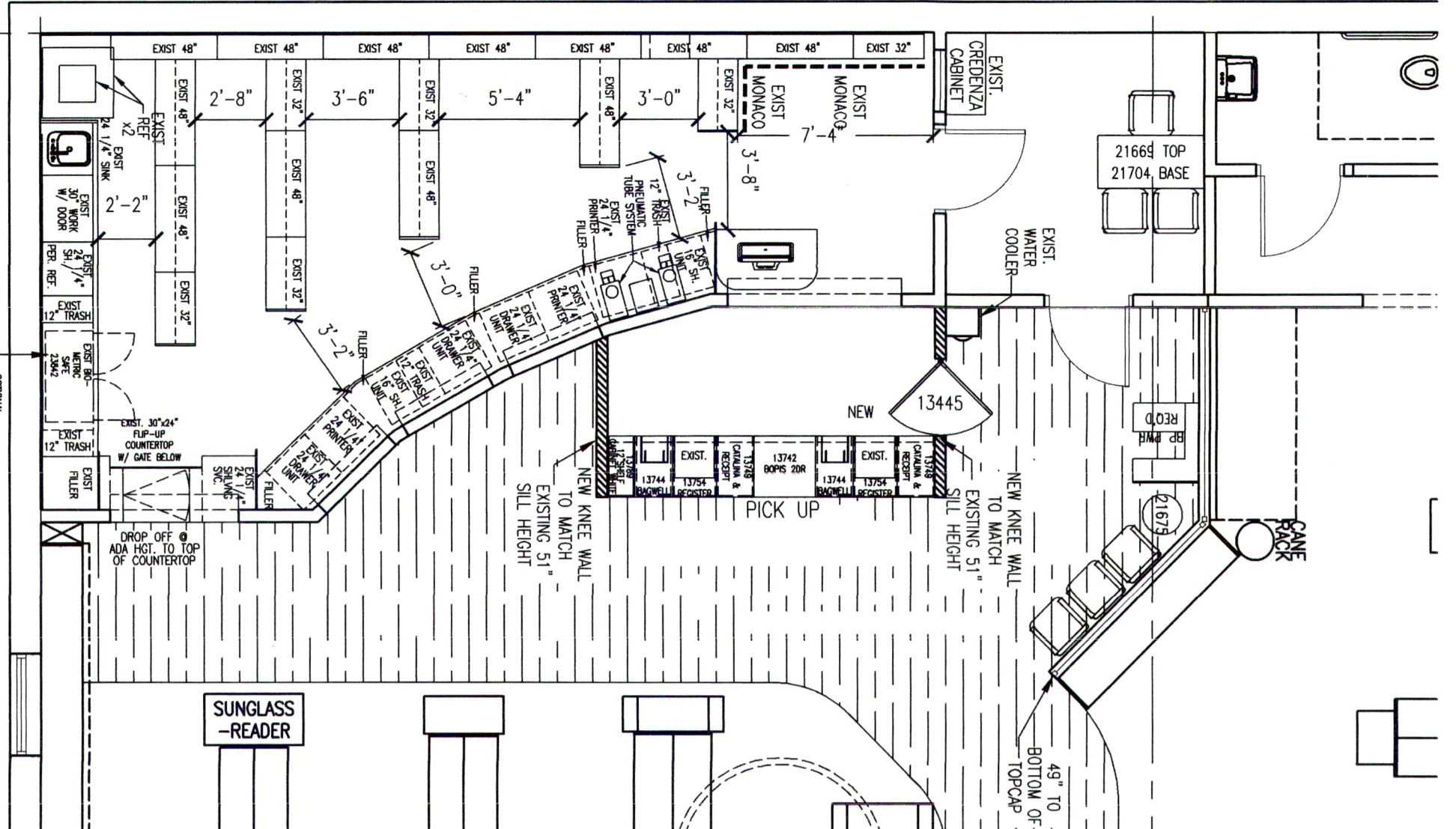
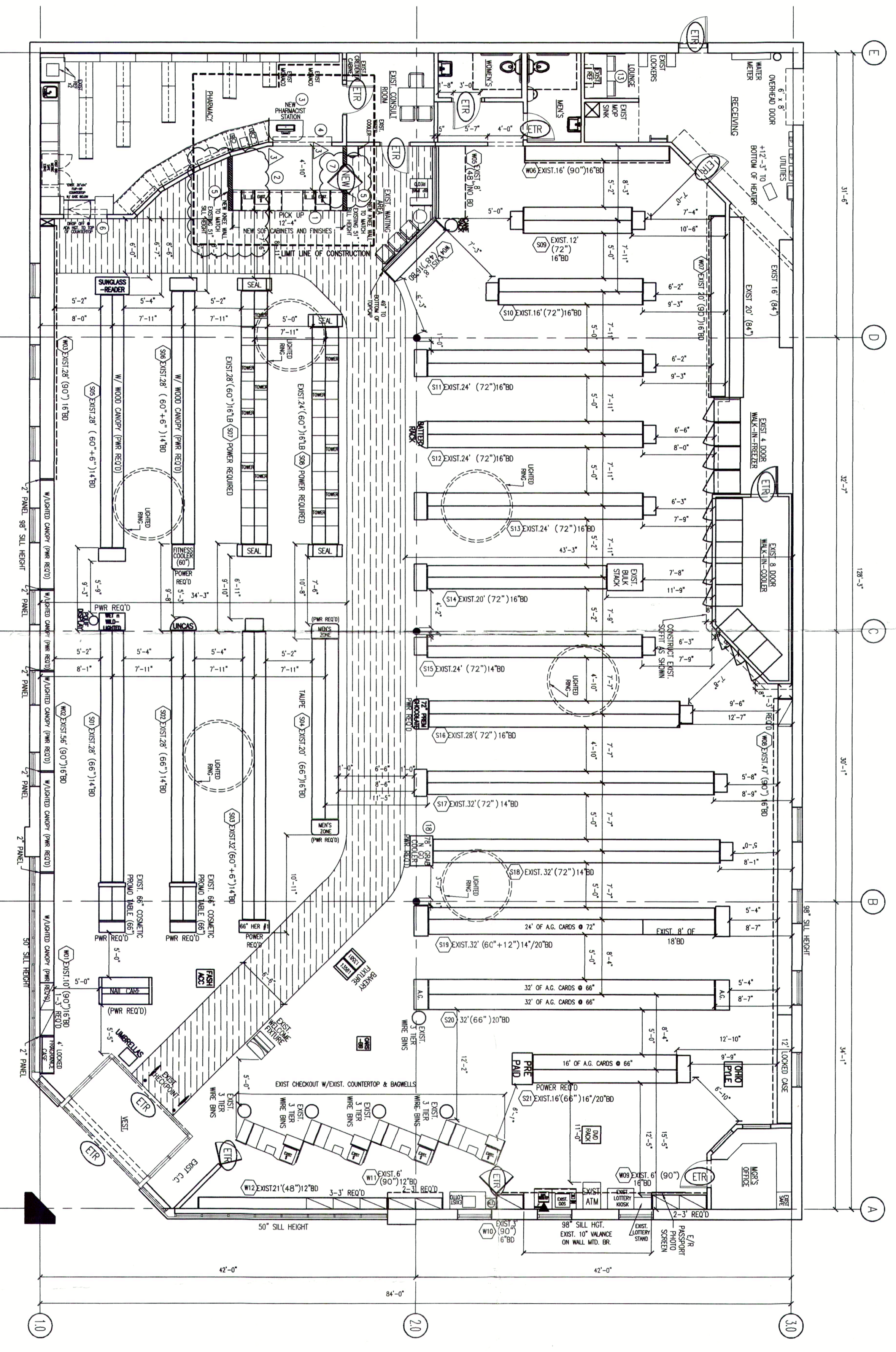


EXIST. PHARMACY PLAN
SCALE: 3/16" = 1'-0"



PROPOSED PHARMACY PLAN
SCALE: 3/16" = 1'-0"



FIXTURE PLAN
SCALE: 1/8" = 1'-0"

- CONSTRUCTION NOTES**
- 1) INSTALL NEW PICK UP ONTO SALES FLOOR.
 - 2) INSTALL NEW SOF CABINETS, COUNTER TOP, AND DATES
 - 3) INSTALL NEW PHARMACIST STATION.
 - 4) INSTALL NEW OVI GATE.
 - 5) CONSTRUCT NEW KNEE WALLS AT PICK UP. KNEE WALL HEIGHT TO MATCH EXISTING 5'1" SILL HEIGHT. ROW TO CONFIRM HEIGHT.
 - 6) EXISTING COUNTERTOP TO REMAIN AT DROP OFF.
 - 7) INSTALL NEW 60" SWING GATE W/ LATCH.

RITE AID
STORE PLANNING
DEPARTMENT
P.O. BOX 3165
HARRISBURG, PA 17105
(717) 761-2633

STORE NO.
1304 PR
RITE AID PHARMACY
124 S. FRONT ST.
STEELETON, PA

PROJECT	TYPE
BUILDING	TYPE
PHARMACY	TYPE
DECOR	TYPE
PROJECT ATTRIBUTES	TYPE
SECURITY LEVEL	TYPE
BUILDING AREA (SQ. FT.)	TYPE
SALES FLOOR	TYPE
PHARMACY	TYPE
WAITING AREA	TYPE
REC./STORAGE	TYPE
LOUNGE	TYPE
CONSULTATION RM	TYPE
VESTIBULE	TYPE
MEZZANINE	TYPE
RESTROOMS	TYPE
SUB TENANT	TYPE
RITE AID TOTAL	TYPE
OVERALL TOTAL	TYPE
REFRIGERATION	TYPE
COOLER DRS	TYPE
FIXTURES (LN. FEET)	TYPE
SALES FLOOR	TYPE
WINE DEPT.	TYPE
TOTAL	TYPE

NO.	DATE	BY	DESCRIPTION
1	1/19/20	HAK	PROPOSED PHARMACY REMODEL
2	1/19/21	HAK	REVISIONS PER AIC NEW SOF PICK UP CABINETS, ADDED KNEE WALLS TO BOTH SIDE OF PICKUP, KNEE WALL TO BE HEIGHT OF EXISTING SILL.
3	4/12/21	HAK	REVISIONS PER ROW & OPERATIONS. REMOVED LOWER GATE, MADE UPPER GATE LATCHING HALF DOOR FOR SECURITY COMPLIANCE.

PATHWAY:	1130		
WINE FLOORING:	0		
CEILING HEIGHTS:	12'-1"		
CONCRETE OVERHEAD:	N/A		
PHARMACY:	10'-0"		
NO.	DATE	BY	DESCRIPTION
1	1/19/20	HAK	PROPOSED PHARMACY REMODEL
2	1/19/21	HAK	REVISIONS PER AIC NEW SOF PICK UP CABINETS, ADDED KNEE WALLS TO BOTH SIDE OF PICKUP, KNEE WALL TO BE HEIGHT OF EXISTING SILL.
3	4/12/21	HAK	REVISIONS PER ROW & OPERATIONS. REMOVED LOWER GATE, MADE UPPER GATE LATCHING HALF DOOR FOR SECURITY COMPLIANCE.