

1975 Lin Lor Lane
Elgin | Illinois 60123



Medical Office Space

Located on the campus of Ascension St. Joseph Hospital, Elgin, Illinois

1975 Lin Lor Lane
51,106 SF Medical Office Building
Available Space: 733 SF - 5,499 SF

87 N Airlite Street
46,968 SF Medical Office Building
Available Space: 399 SF - 12,268 SF

- Directly connected to Hospital for ultimate physician and patient convenience
- Synergistic mix of co-tenant medical specialties
- Professionally owned and managed by Bauman & Company, LLC

DEMOGRAPHICS

- 5 Mile Population - 164,783
- Households - 54,352
- Avg HH Income - \$103,801

87 N Airlite Street
Elgin | Illinois 60123



Brian Edgerton
+1 630 693 0671
bedgerton@hiffman.com

Jason Wurtz
+1 630 693 0692
jwurtz@hiffman.com

Sarah Walker
+1 630 389 8911
swalker@hiffman.com



1975 LIN LOR LN

- 1. SUITE G40 - VANILLA BOX CONDITION
- 2-4. SUITE G30 - RAW SHELL CONDITION
- 5-7. SUITE 225 - VANILLA BOX CONDITION



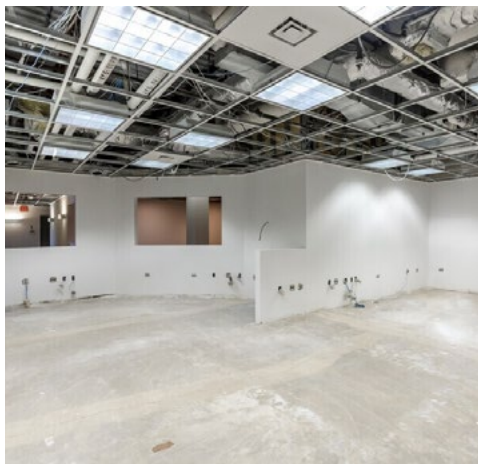
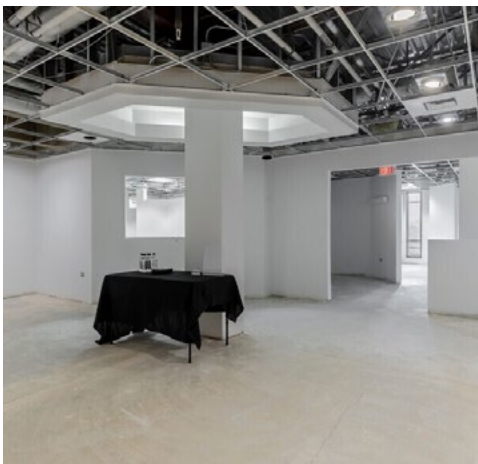


87 N AIRLITE ST

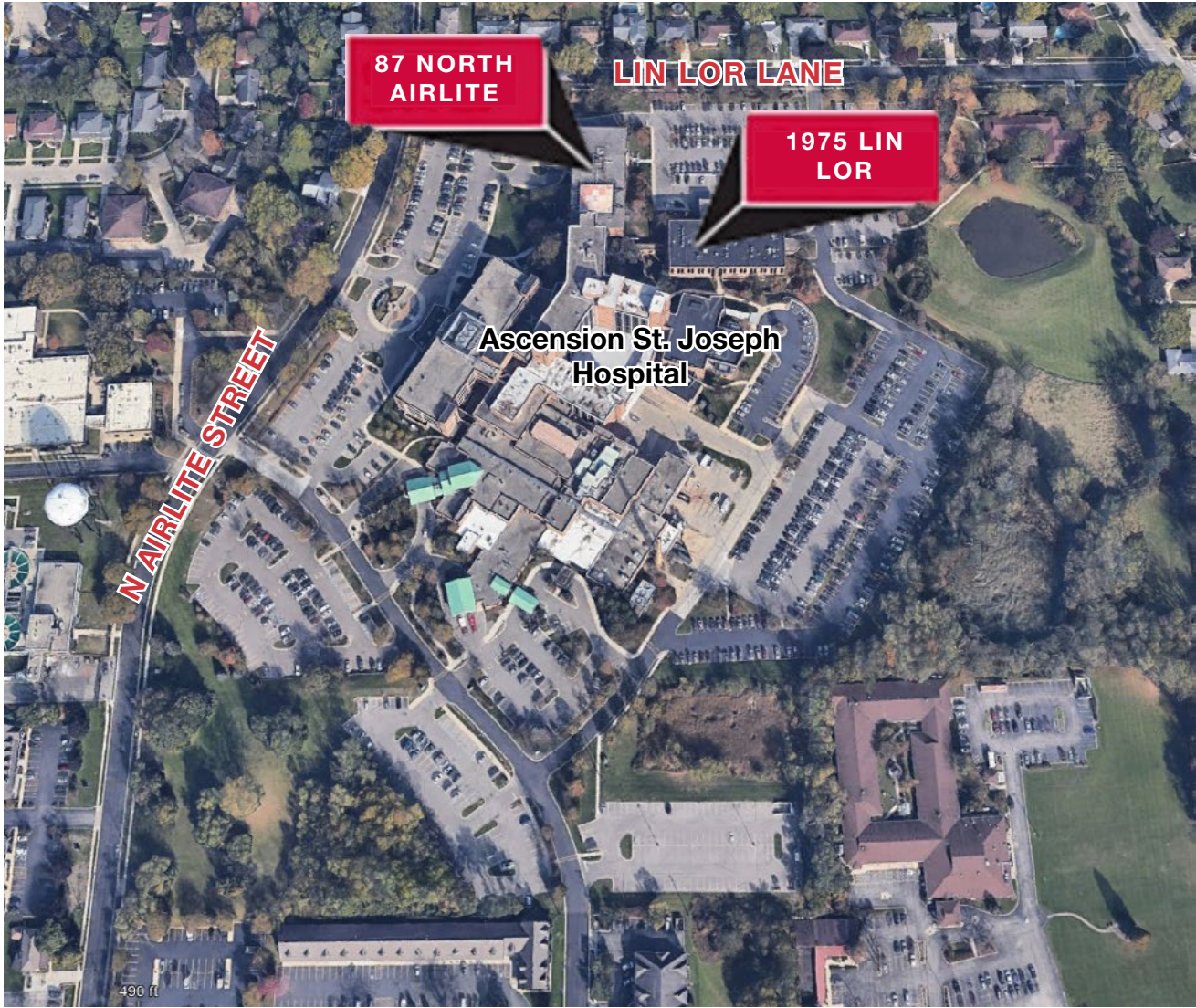
1-2. LOBBY

3-5. SUITE 240 - RAW
SHELL CONDITION

6-8. SUITE 250 - VANILLA
BOX CONDITION



SUITES 230-260 CAN BE COMBINED FOR A TOTAL OF 12,268 SF



OWNED & MANAGED BY

BAUMAN
&
COMPANY, LLC

One Oakbrook Terrace
Suite 400
Oakbrook Terrace, Illinois 60181
+1 630 932 1234

NAHiffman

HIFFMAN
NATIONAL

hiffman.com