



SEATTLE
TOWER

1218 3RD AVENUE
SEATTLE, WA 98101

FLOOR
12



SPEC SUITE · 8,562 RSF · AVAILABLE NOW

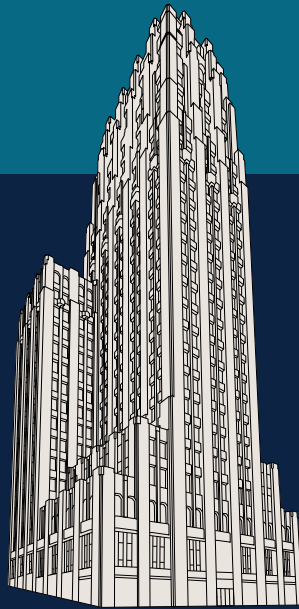
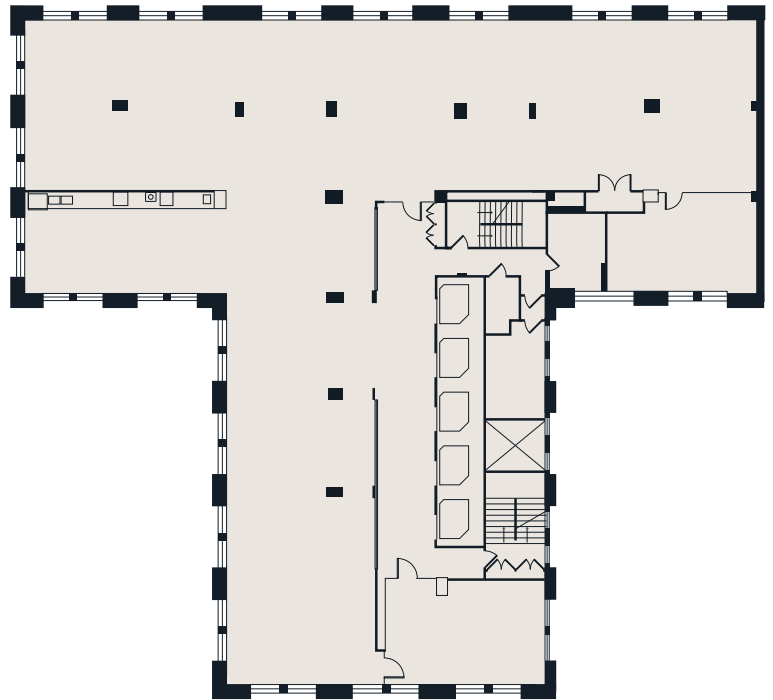




Space HIGHLIGHTS

- Full floor opportunity
- Brand new improvements; Move-in ready spec suite
- Open space with conference rooms and open kitchen concept
- Movable art glass wall at elevator lobby
- Abundant natural light with operable windows

Floor 12
8,562 RSF



TIM JONES
+1 206 971 7011
tim.jones@jll.com

CLEITA HARVEY
+1 206 607 1794
cleita.harvey@jll.com



SEATTLE
TOWER

Jones Lang LaSalle Brokerage, Inc.
Although information has been obtained from sources deemed reliable, neither Owner nor JLL makes any guarantees, warranties or representations, express or implied, as to the completeness or accuracy as to the information contained herein. Any projections, opinions, assumptions or estimates used are for example only. There may be differences between projected and actual results, and those differences may be material. The Property may be withdrawn without notice. Neither Owner nor JLL accepts any liability for any loss or damage suffered by any party resulting from reliance on this information. If the recipient of this information has signed a confidentiality agreement regarding this matter, this information is subject to the terms of that agreement. ©2025 Jones Lang LaSalle IP, Inc. All rights reserved.