

OFFICE  
LEASE



# THE LANDING

300 Admiral Way | Edmonds, WA

**Jeff Ayers**

**Owner | Designated Broker**

425.275.2406

[jeff@ayerscommercialgroup.com](mailto:jeff@ayerscommercialgroup.com)

**Andrew Ayers**

**Broker**

206.300.0459

[andrew@ayerscommercialgroup.com](mailto:andrew@ayerscommercialgroup.com)

**Matthew Fay**

**Broker**

952.769.6534

[matthew@ayerscommercialgroup.com](mailto:matthew@ayerscommercialgroup.com)

**AYERS**  
COMMERCIAL  
GROUP

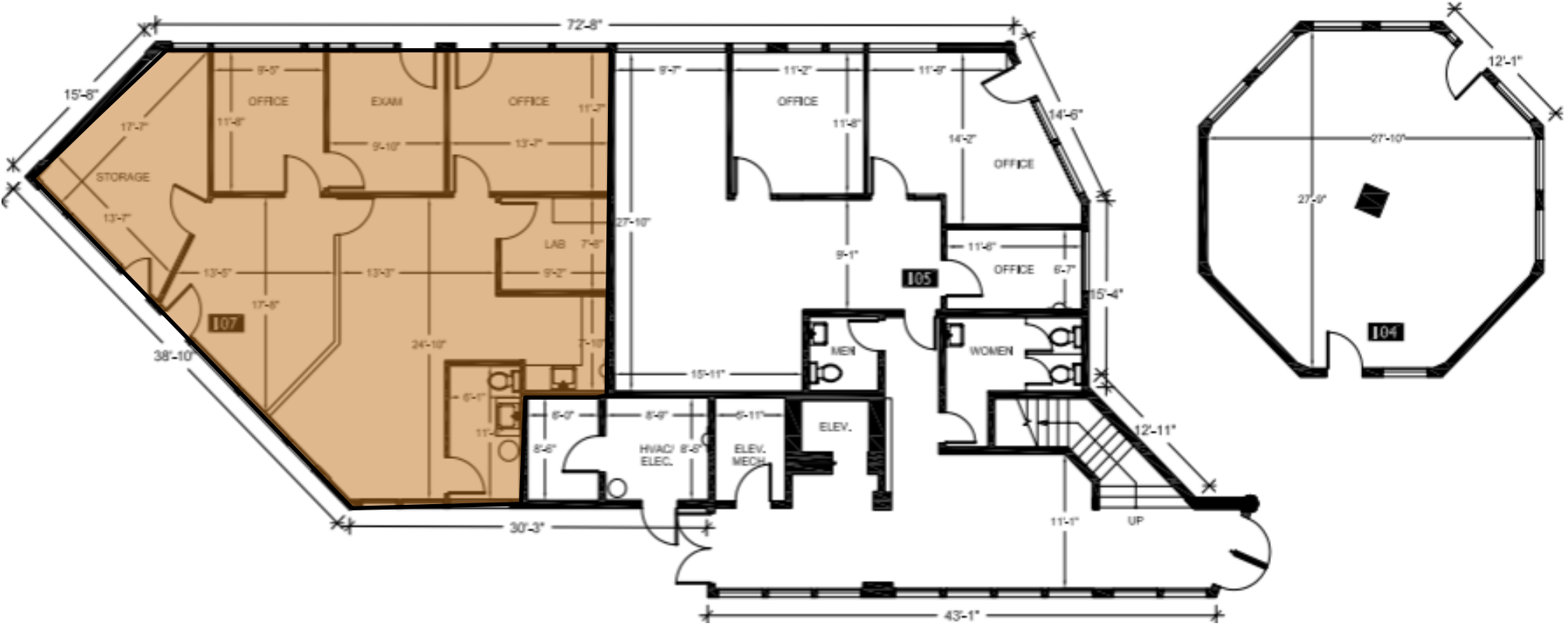
# PROPERTY FEATURES

<b>YEAR BUILT</b>	<b>1985</b>
<b>LEASE TYPE</b>	<b>Modified Gross</b>
<b>WATER/SEWER</b>	<b>Included in Rate</b>
<b>ELECTRICITY</b>	<b>Included in Rate</b>
<b>GARBAGE</b>	<b>Included in Rate</b>
<b>PARKING</b>	<b>Lot &amp; Street Parking</b>
<b>ELEVATOR</b>	<b>Yes</b>
<b>VIEWS</b>	<b>Facing Out Towards Ferry</b>



# AVAILABLE SPACES

Suite	Square Feet	Base Rent	Excise Tax	Total	Notes
107	1,524	\$4,445	\$96.75	\$4,541.75	Office space in downtown Edmonds along the waterfront. Current layout is a large open reception area, 4 private offices, kitchenette, private restroom, and storage room. Available now.



# AVAILABLE SPACES

Suite	Square Feet	Base Rent	Excise Tax	Total	Notes
107 A	585	\$1,707	\$37	\$1,744	Collaborative wellness concept, featuring a spacious shared reception area, four private offices, kitchenette, private restroom, and dedicated storage. Ideal for therapists, counselors, massage practitioners, naturopaths, acupuncturists, or other wellness professionals seeking a shared ecosystem.
107 B	275	\$804	\$17	\$821	
107 C	283	\$825	\$18	\$843	
107 D	381	\$1,111	\$24	\$1,135	Available Now.

