

FOR LEASE

115 HOOD TERRACE
WEST HAVEN CT
KENNETH GINSBERG 203-376-6266

KNG
REALTY

(959) CALL-KNG

**AMPLE
PARKING**



1,300 SF INDUSTRIAL SPACE

JUST LISTED!

EASY ACCESS TO I-95
SAW MILL RD EXIT #42

- 15 FOOT CLEAR HEIGHT
- 8X10 OVERHEAD DOOR
- ACCESS TO THREE LOADING DOCS
- TWO LOADING DOCKS ARE ADJUSTABLE/SELF LEVELING

LEASE PRICE

\$1,750/MO. + UTIL



PROPERTY FACTS

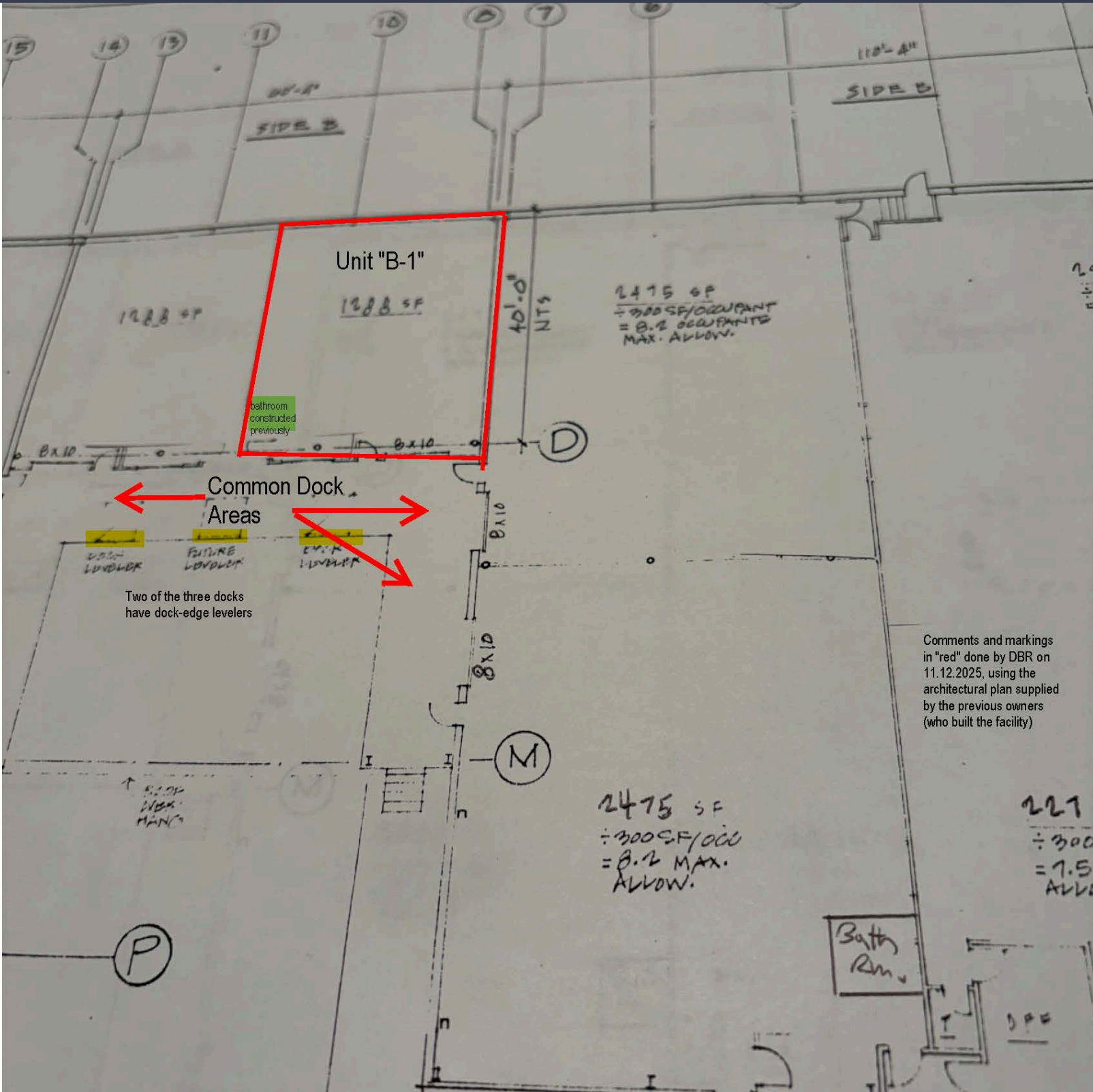
115 HOOD TERRACE

Total Building SF	49,000 SF
Available SF	1,300 SF
Year Built	1988
Ceiling Height	20' +/-
Parking	Paved Lot
Stories	1
Overhead Doors	1
Sewer	City
Water	Public Water
Zoning	TOD
Heat	Forced Air/Gas
Assessment	\$2,304,680
Mill Rate	37.39
Taxes / SF	\$1.76

KENNETH GINSBERG 203-376-6266

WWW.KNGREALTY.COM

115 HOOD TERRACE WEST HAVEN CT



Comments and markings in "red" done by DBR on 11.12.2025, using the architectural plan supplied by the previous owners (who built the facility)