

For Sale

Land

5782 Washeon Road
Saint Charles, MO 63301



- 54.52 acres
- Great for Hunting or Recreational Use
- Could be developed into a RV Park or Campsite
- Electric on site
- Frontage on Mississippi River in between River Island Marina and Lake Center Marina off Washeon Rd. and Orchard Farm Rd.
- Zoning: Vacant Agricultural (A)
- Located within the Orchard Farm School and Fire District
- Sale Price: \$600,000

Danny Wapelhorst

Vice President

Phone: (636) 970-0330

dannyw@cissellmueller.com

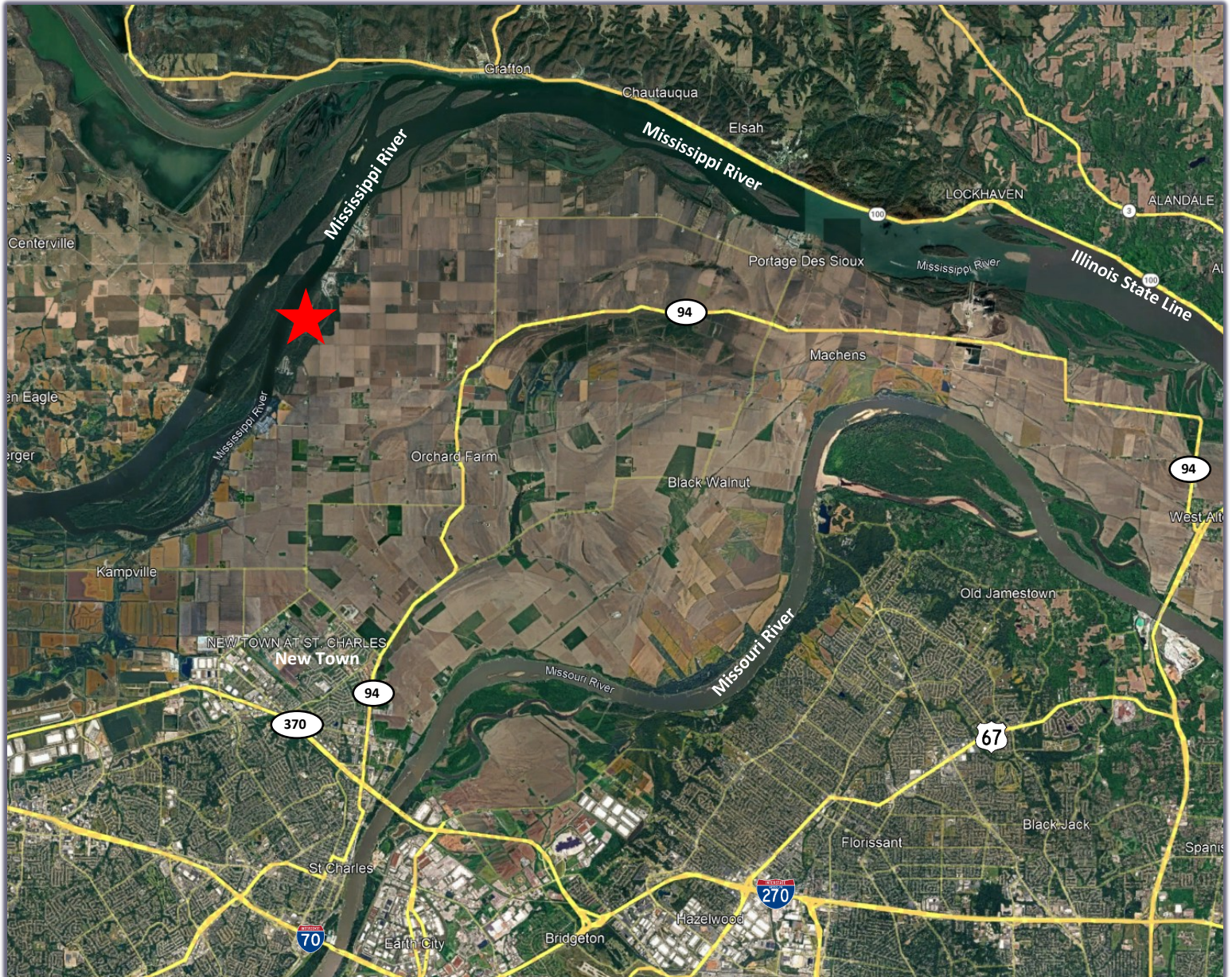


CISSELL MUELLER
COMPANY, L.L.C.

For Sale

Land

5782 Washeon Road
Saint Charles, MO 63301



Danny Wapelhorst

Vice President

Phone: (636) 970-0330

dannyw@cissellmueller.com



CISSELL MUELLER
COMPANY, L.L.C.