

4100

Main Street

Kansas City, MO

33,801 SF

For Sale or Lease



WATERFORD
PROPERTY COMPANY LLC

Joe O'Connor

Cell: 816.308.0350

Joe.Oconnor@waterfordproperty.net

Matthew Burcham

Cell: 816.729.8635

Matthew.Burcham@waterfordproperty.net

Chuck Connealy, SIOR, CCIM

Direct: 913.789.9020

Cell: 913.515.6616

Chuck.Connealy@waterfordproperty.net

Information furnished regarding property is from sources deemed reliable but no warranty or representation is made as to the accuracy thereof and same is submitted subject to errors, omissions, prior sale or lease or withdrawal, without notice.

PROPERTY OVERVIEW

BUILDING SPECS

Building Size	33,801 SF
Floors	Three (3) 11,267 SF floors Can be leased separately or together
Year Built	1989
Clear Height	10' to drop ceiling 14' to deck
Loading	One (1) 8' x 8' dock-high
Material Handling	Elevator and multi-floor conveyor system
Fire Suppression	Fully sprinklered
Climate Control	Fully air conditioned and heated

SITE SPECS

Land Size	0.99 acres across four (4) parcels
Parking Spaces	+/- 70
Public Transit	On KC Streetcar Line
Zoning	B3-2
2024 Taxes	\$76,833.21 (\$2.27 PSF)
Electric Provider	Evergy
Gas Provider	Spire
Water / Sewer	KC Water

PRICING

Sale	\$4,250,000
Lease	\$7.00 NNN



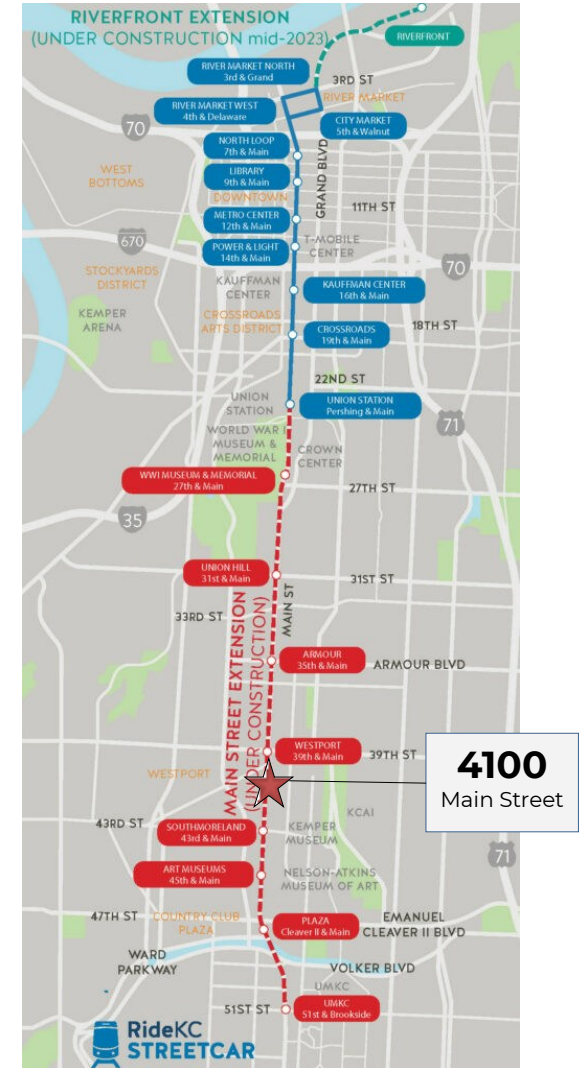
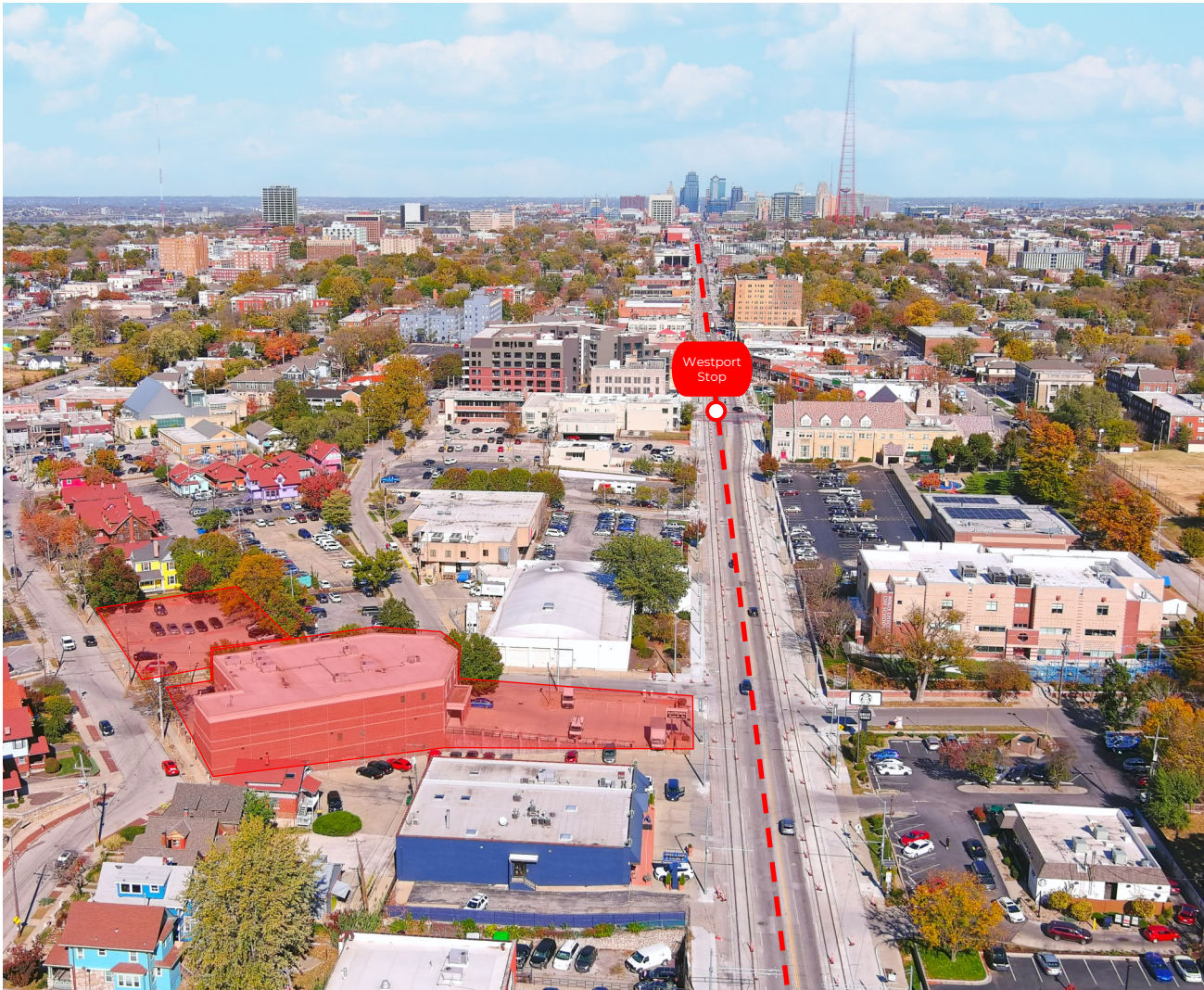
4100 Main Street
Kansas City, MO

AERIAL MAP



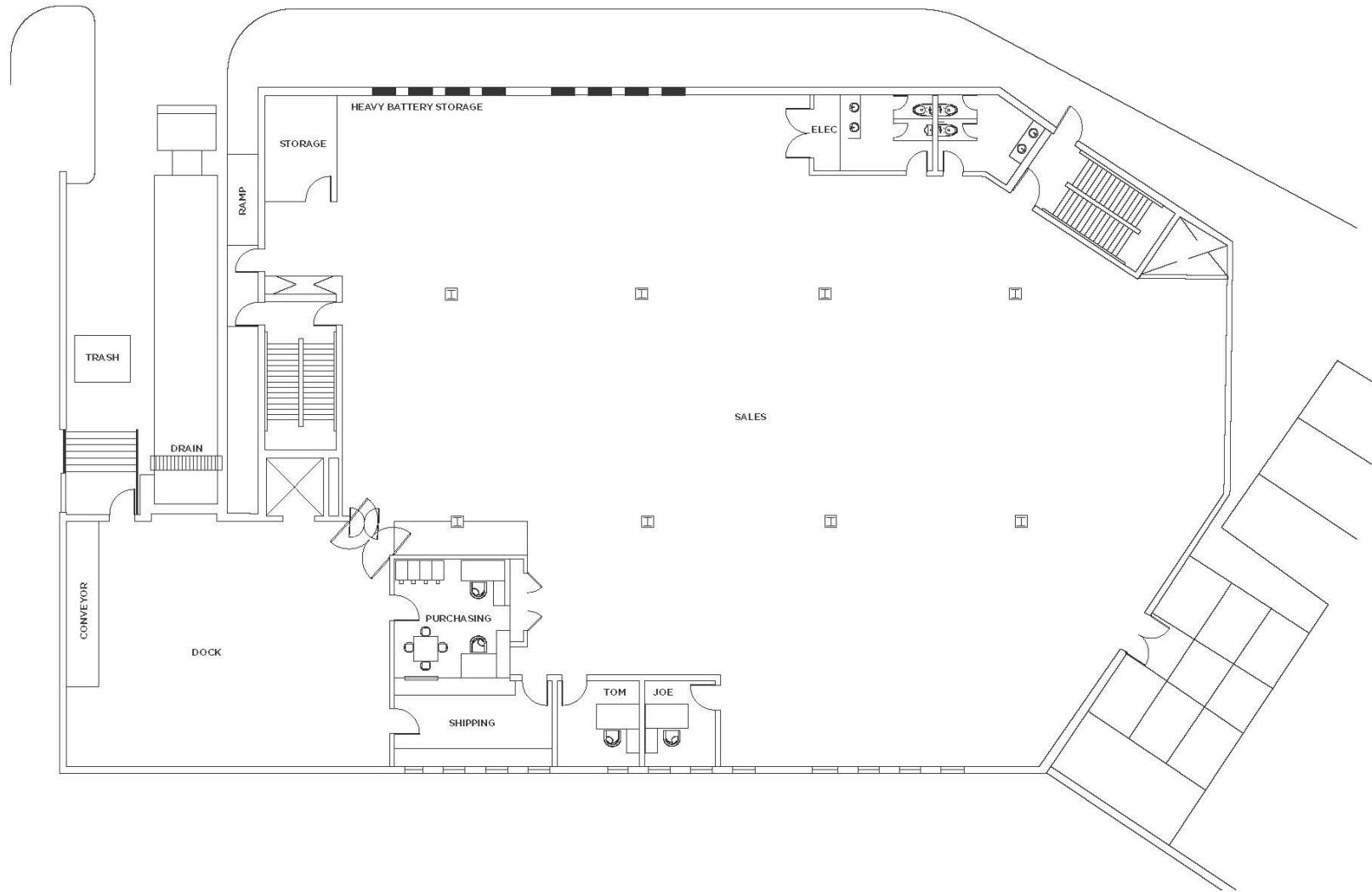
KANSAS CITY STREETCAR

PROPERTY IS LOCATED ON THE KC STREETCAR LINE

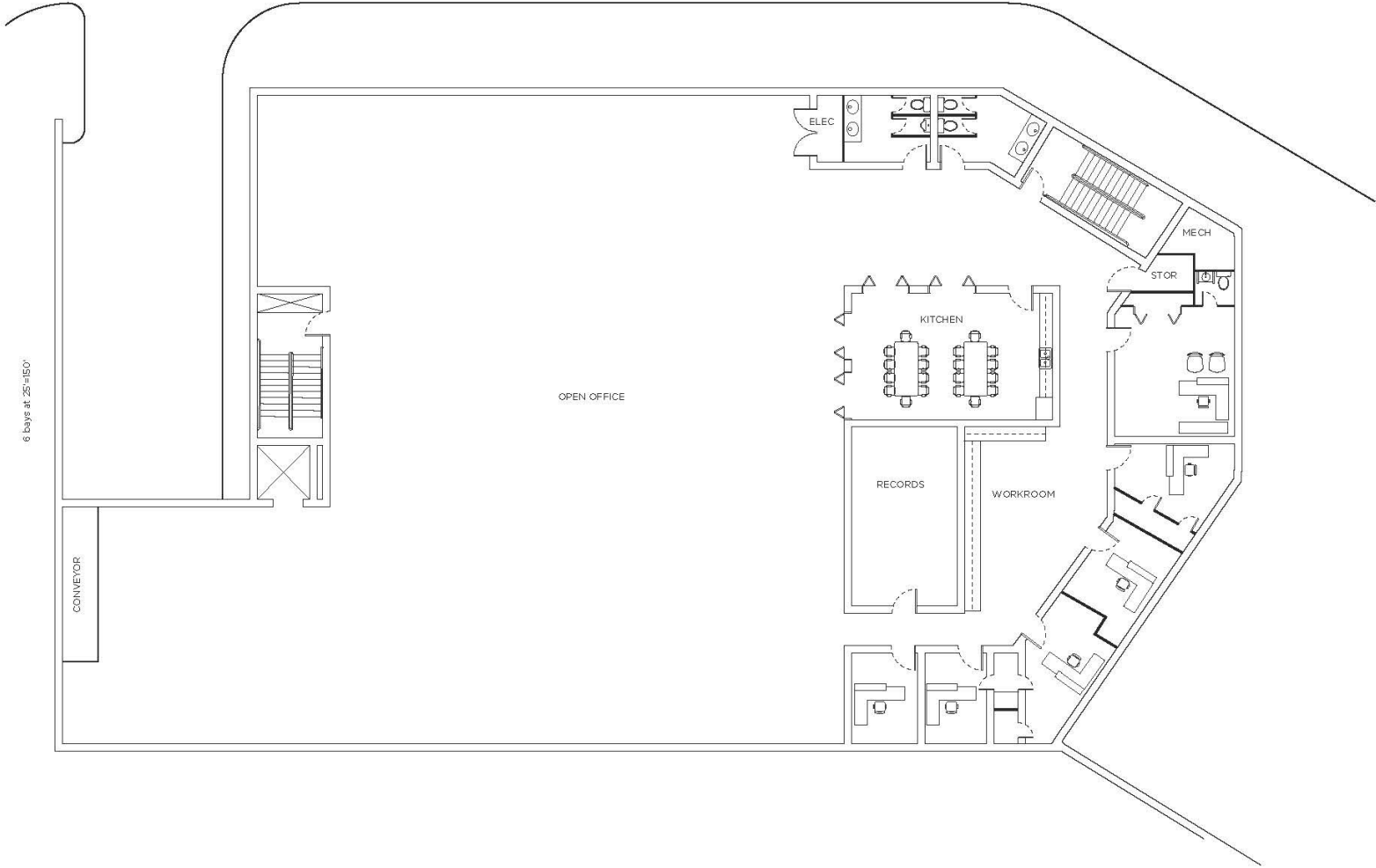


4100 Main Street
Kansas City, MO

MAIN FLOOR PLAN



SECOND FLOOR PLAN



LOWER LEVEL FLOOR PLAN

