

NOW LEASING

CUSHMAN &
WAKEFIELD

COMMERCIAL
OKLAHOMA

THREE PARTNERS PLACE

FROM LOVE
INNOVATION HUB

201 DAVID L BOREN BLVD, SUITE 290
NORMAN, OK 73072



MAIN LOBBY



COMMON AREA

THREE PARTNERS PLACE

201 DAVID L BOREN BLVD, STE. 290
NORMAN, OK 73072

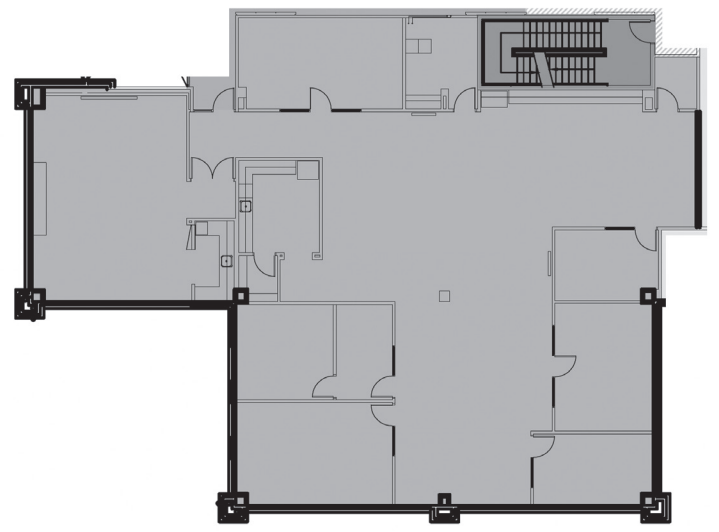
- BUILDING SIZE: ± 75,000 SF
- **AVAILABLE SPACE: ± 6,496 RSF**
- FLOOR: 2nd | Suite 290
- AVAILABILITY: Immediate
- **LEASE RATE: \$26.00 FSG**

BARRY MURPHY
+1 405 297 9913
bmurphy@commercialoklahoma.com

204 N Robinson Ave, Ste 2000 | Oklahoma City, OK 73102
+ 1 405 563 5000 | commercialoklahoma.com

- PARKING: Free Surface
- Space available for lease located on the second floor of Three Partners Place in the Tom Love Innovation Hub. Building amenities include:
 - » First Floor Restaurant
 - » First Floor Collaborative / Open Space Plan
 - » Well Situated in the University of Oklahoma's South campus Research Park
 - » Located immediately off of Highway 9 in Norman, on campus

FLOOR PLAN



©2025 Cushman & Wakefield | Commercial Oklahoma. Independently Owned and Operated / A Member of the Cushman & Wakefield Alliance All rights reserved. The information contained in this communication is strictly confidential. This information has been obtained from sources believed to be reliable but has not been verified. No warranty or representation, express or implied, is made as to the condition of the property (or properties) referenced herein or as to the accuracy or completeness of the information contained herein, and same is submitted subject to errors, omissions, change of price, rental or other conditions, withdrawal without notice, and to any special listing conditions imposed by the property owner(s). Any projections, opinions or estimates are subject to uncertainty and do not signify current or future property performance.