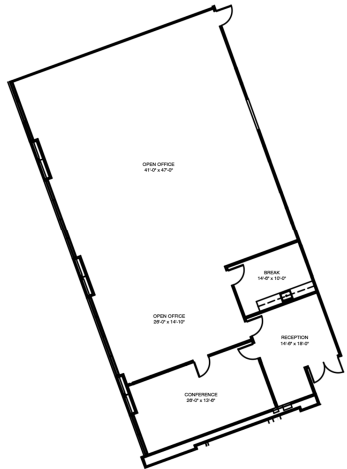


DECKER PLACE

420 Decker Drive, Irving, Texas 75062

- » 43,559sf, Two-Story, Class B Building
- » 3.5/1,000 sf Surface Parking Ratio
- » 420 Decker is located in the world-renowned, 12,000 acre master planned community of Las Colinas within the city of Irving. It is just 10 minutes from DFW International Airport and Love Field, and only 20 minutes from downtown Dallas. The location, in the heart of the Dallas/Fort Worth Metroplex, provides easy access to several major highways, including SH 114, SH 183, I-635, I-30, and I-35.

Suite 100
3,753 SF



Andrew Crain | 972.942.8609
acrain@dogwoodcommercial.com