

# FOR LEASE

UP TO 4.5 AC YARD SPACE

5580 Middle Road | Theodore

**FLEXIBLE IOS - BUILT TO  
FIT YOUR OPERATION**

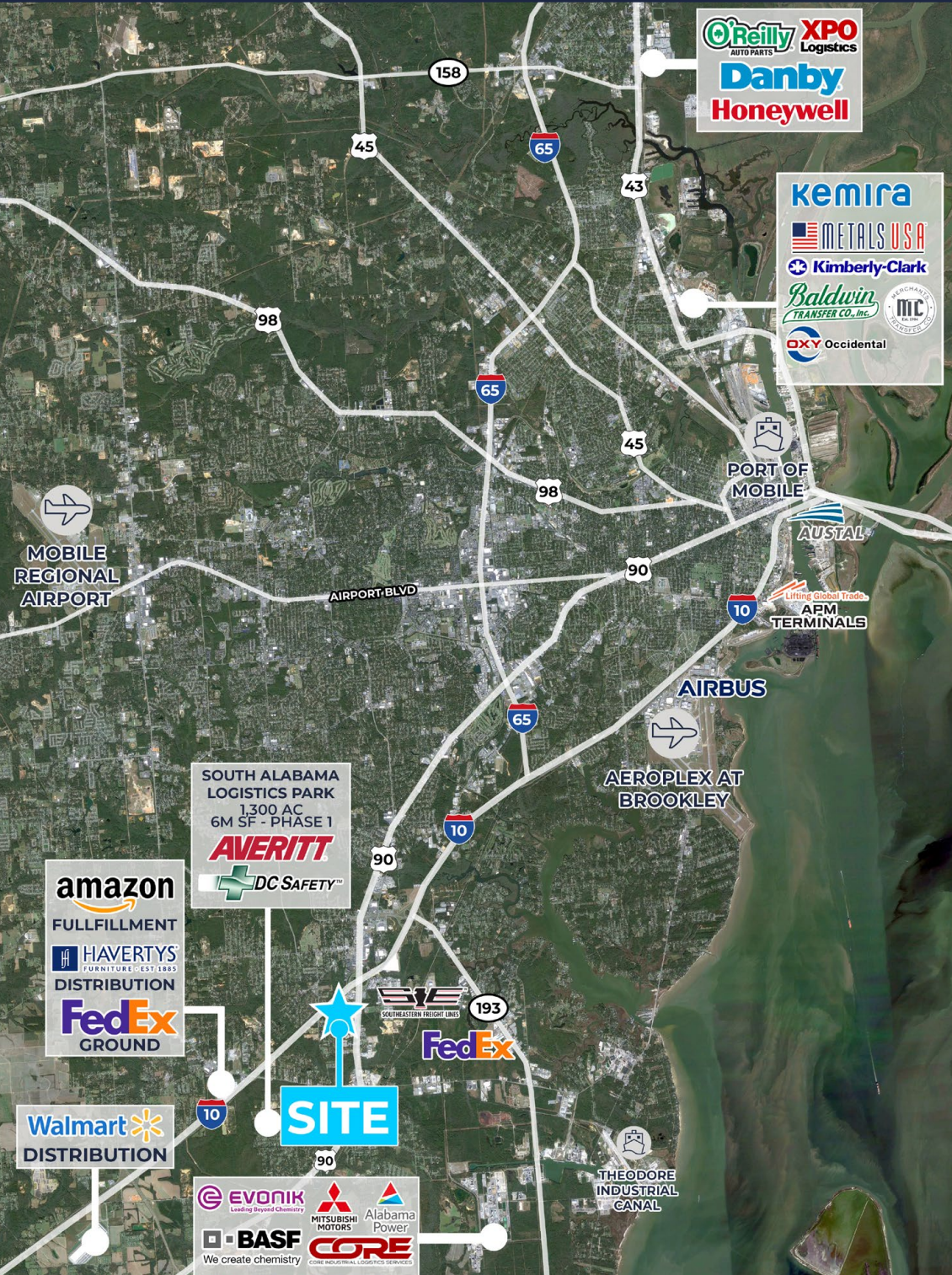


**Pete Riehm, SIOR**

251.442.4349 | [priehm@cre-mobile.com](mailto:priehm@cre-mobile.com)



**CRE  
MOBILE**  
CRE-MOBILE.COM



**CRE  
MOBILE**  
CRE-MOBILE.COM

# FOR LEASE

5580 Middle Road | Mobile, AL



## SIZE

0.25 - 4.5± AC industrial yard  
*Size is adjustable based on tenant's needs*



## ZONING

County : Unzoned



## BEST USE

Ideal lay down/ container yard



## BUILD-TO-SUIT

Owner will build-to-suit & accommodate tenant's requirements



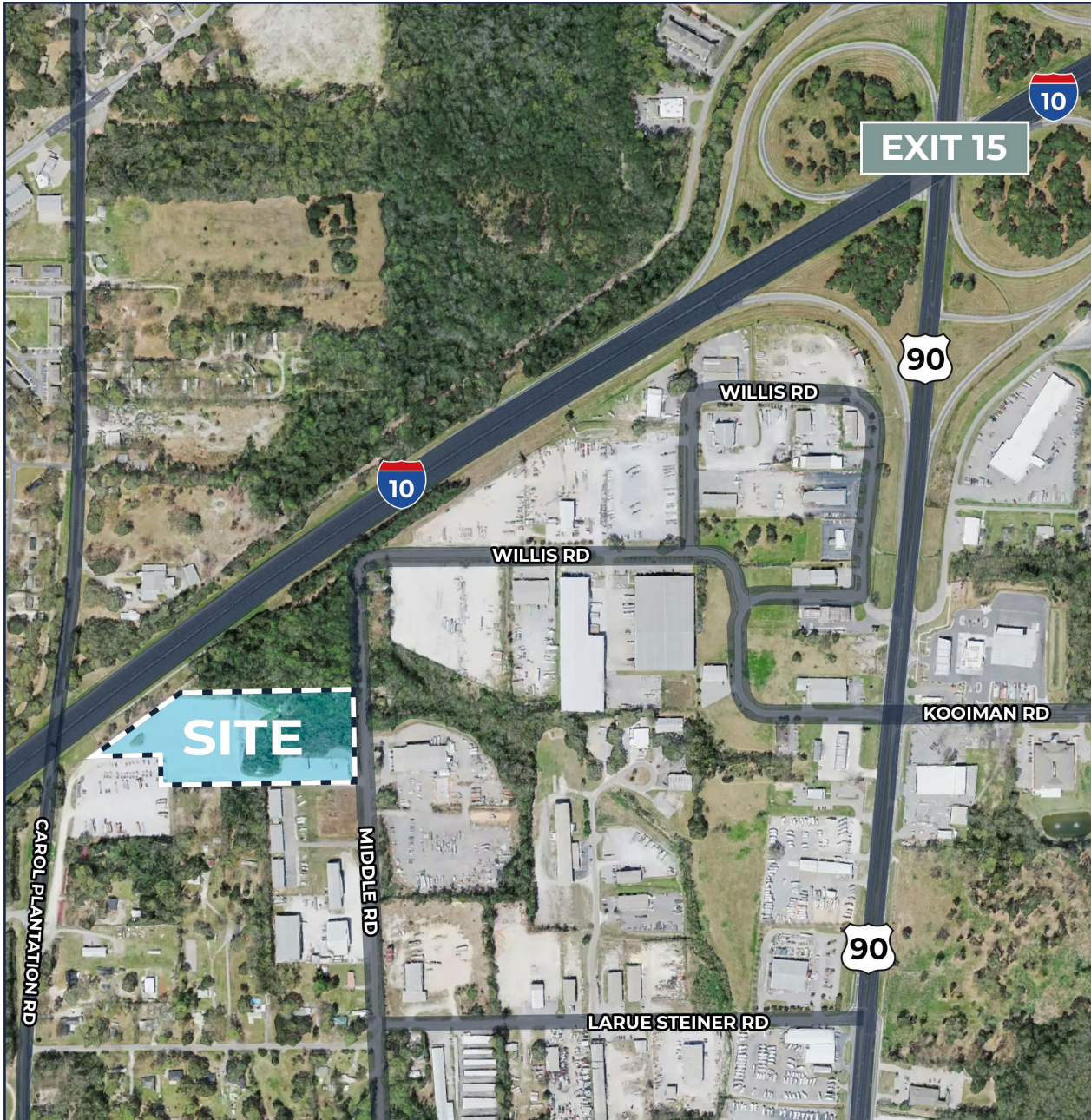
## FRONTAGE ON I-10

Excellent visibility featuring 500' frontage along I-10



## PRICING

**Lease Rate:** 0.25 AC/\$1,250/month  
0.5 AC/\$2,300/month  
1 AC/\$3,800/month



**Desired Corridor**



Located in Tillman's Corner in the highly desired & booming I-10 corridor full of numerous industrial, showrooms, offices and more.

**Central Location**



Conveniently located less than two minutes from I-10 EXIT 15 A&B & only one EXIT from the 2M SF South Alabama Logistics Park with quick access to I-65 & AL Port.

NO WARRANTY OR REPRESENTATION, EXPRESS OR IMPLIED, IS MADE AS TO THE ACCURACY OF THE INFORMATION CONTAINED HEREIN, AND THE SAME IS SUBMITTED SUBJECT TO ERRORS, OMISSIONS, CHANGE OF PRICE, RENTAL OR OTHER CONDITIONS, PRIOR SALE, LEASE OR FINANCING, OR WITHDRAWAL WITHOUT NOTICE, AND OF ANY SPECIAL LISTING CONDITIONS IMPOSED BY OUR PRINCIPALS. NO WARRANTIES OR REPRESENTATIONS ARE MADE AS TO THE CONDITION OF THE PROPERTY NOR ANY HAZARDS CONTAINED THEREIN ARE ANY TO BE IMPLIED.



NO WARRANTY OR REPRESENTATION, EXPRESS OR IMPLIED, IS MADE AS TO THE ACCURACY OF THE INFORMATION CONTAINED HEREIN, AND THE SAME IS SUBMITTED SUBJECT TO ERRORS, OMISSIONS, CHANGE OF PRICE, RENTAL OR OTHER CONDITIONS, PRIOR SALE, LEASE OR FINANCING, OR WITHDRAWAL WITHOUT NOTICE, AND OF ANY SPECIAL LISTING CONDITIONS IMPOSED BY OUR PRINCIPALS. NO WARRANTIES OR REPRESENTATIONS ARE MADE AS TO THE CONDITION OF THE PROPERTY NOR ANY HAZARDS CONTAINED THEREIN ARE ANY TO BE IMPLIED.