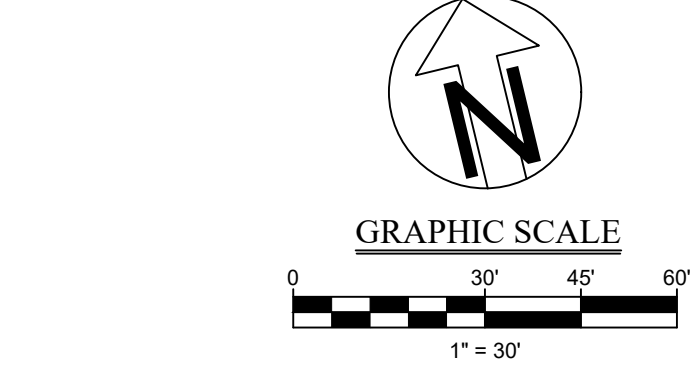


LINE #	BEARING	DISTANCE
L1	S 13°15'41" W	263.98'
L3	N 05°08'20" W	549.27'
L16	N 13°15'41" E	150.00'
L19	N 76°44'19" W	595.24'
L20	S 76°44'19" E	875.65'
L30	N 84°51'40" E	32.98'

POINT #	NORTHING	EASTING
CRP-1	1,856,815.88	588,807.96
CRP-2	1,856,837.00	588,797.86
CRP-3	1,856,870.34	588,561.98
CRP-4	1,856,624.71	588,504.09
CRP-5	1,856,573.17	588,722.78
CRP-6	1,856,322.66	588,807.13

CURVE #	RADIUS	LENGTH	TANGENT	CHORD	DELTA
C2	50.00'	62.48'	36.06'	58.49'	71°35'59"
C14	100.00'	32.11'	16.20'	31.98'	18°24'01"



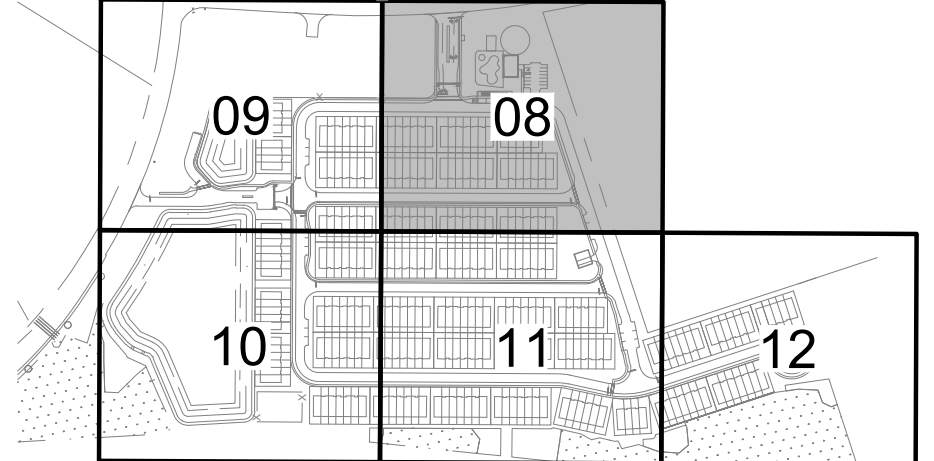
- SITE DETAILS**
- SD1 CONCRETE SIDEWALK DETAIL
  - SD8 STOP SIGN
  - SD07 COPC PAVEMENT SECTION
  - SD09 WHEEL CHAIR RAMP IN SIDEWALK AT CURB RETURN
  - SD11 TYPICAL PAVEMENT SECTION
  - SD12 PRECAST CONCRETE WHEELSTOP
  - SD15 ACCESSIBLE PARKING SIGN
  - SD18 STOP BAR
  - SD25 CURB WALK
  - SD26 DETECTABLE WARNING DETAIL
  - SD34 CONNECTION TO EXISTING PAVEMENT
  - SD35 CONCRETE PAVEMENT SECTION
  - SD40 POSTED CONSERVATION EASEMENT SIGN DETAIL
  - SS-30 SERVICE POLE DETAIL

- SITE NOTES**
- S01 SPECIAL EMPHASIS CROSS WALK PER FDOT INDEX 711-001.
  - S02 TIE INTO EXISTING PAVEMENT
  - S03 TURN LANE-USE ARROW (RIGHT OR LEFT TURN) PER FDOT INDEX 711-001.
  - S04 THROUGH LANE-USE ARROW PER FDOT INDEX 711-001.
  - S05 ADA PAVEMENT MARKING PER FDOT INDEX 711-001.
  - S06 6" YELLOW PAINT STRIPE
  - S07 ROAD ENDS SIGN (MUTCD W14-2A) PER STANDARD HIGHWAY SIGNS
  - S10 GUARDRAIL PER FDOT INDEX 536-001
  - S11 PROPOSED TIMBER WALL WITH RAILING - SEE MANUFACTURER'S SPECIFICATIONS (UNDER A SEPARATE COVER) FOR DETAILS. A SEPARATE BUILDING PERMIT IS REQUIRED FOR THIS WALL.
  - S14 PEDESTRIAN CROSSING PER MUTCD W11-2A
  - S15 PEDESTRIAN CROSSING ARROW PLATE PER MUTCD W16-7P
  - S20 MAIL KIOSK

- GENERAL NOTES**
1. ALL DIMENSIONS ARE LISTED TO THE EDGE OF PAVEMENT AND/OR FACE OF CURB.
  2. ALL RADII ARE 5' UNLESS OTHERWISE NOTED.

HATCH LEGEND	
INTERNAL PAVEMENT	[Hatch pattern]
COPC PAVEMENT	[Hatch pattern]
CONCRETE	[Hatch pattern]
WETLANDS	[Hatch pattern]

- BENCHMARKS**
- BM1 FMND LB7143  
N. 1858424.54, E. 587519.25, 24.65 NAVD '88.
  - BM2 SBM  
N. 1857014.88, E. 587896.66, 25.00 NAVD '88.
  - BM3 SET 1/2" IRON PIPE & CAP  
N. 1857077.32, E. 587897.17, 24.40 NAVD '88.
  - BM4 SET 1/2" IRON PIPE & CAP STAMPED "LB 8979"  
N. 1856837.00, E. 588797.86, 23.53 NAVD '88.
  - BM5 SET NAIL  
N. 1855910.47, E. 588881.58, 22.03 NAVD '88.



**MATTHEWS | BCCM**

P.O. BOX 3126, 7 WALDO STREET  
ST. AUGUSTINE, FL 32084  
PHONE: 904.826.1334 • FAX: 904.826.4547  
INFO@MIDGING.COM

**SITE PLAN**

**BELLE TERRE ESTATES**  
CITY OF PALM COAST  
PREPARED FOR  
MARK GOLDSHIMDT

NO.	DATE	DESCRIPTION
1	11-04-24	PER SJRWMD COMMENTS
2	01-09-25	PER CITY OF PALM COAST COMMENTS
3	12-20-24	PER SJRWMD COMMENTS
4	03-19-25	PER CITY OF PALM COAST COMMENTS
5	05-06-25	PER CITY OF PALM COAST COMMENTS

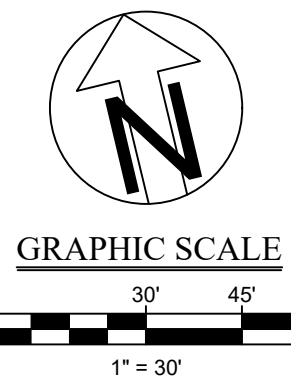
SHEET NO. **08**  
OF 70

LINE #	BEARING	DISTANCE
L4	N 76°44'19" W	595.24'
L5	S 13°15'41" W	620.31'
L10	S 52°41'51" E	26.30'
L11	S 76°47'39" E	125.29'
L12	S 86°46'52" E	63.47'
L13	S 76°44'19" E	875.65'
L14	N 29°01'18" W	117.69'

CURVE #	RADIUS	LENGTH	TANGENT	CHORD	DELTA
C8	47.11'	20.40'	10.36'	20.24'	24°48'29"
C9	100.00'	17.43'	8.74'	17.41'	9°59'12"
C10	116.85'	21.58'	10.82'	21.55'	10°34'58"
C11	37.00'	39.16'	21.64'	37.36'	60°38'15"
C12	1,570.69'	93.15'	46.59'	93.13'	3°23'52"

POINT #	NORTHING	EASTING
CRP-7	1,856,480.97	588,067.76
CRP-8	1,856,527.25	587,847.14
CRP-9	1,856,585.40	587,627.04
CRP-17	1,857,014.88	587,896.66

BENCHMARK #2  
SBM  
ELEV: 25.00  
(NAVD 88)  
N: 1857014.88  
E: 587896.66



**SITE DETAILS**

- SD1 CONCRETE SIDEWALK DETAIL
- SD8 STOP SIGN
- SD07 COPC PAVEMENT SECTION
- SD09 WHEEL CHAIR RAMP IN SIDEWALK AT CURB RETURN
- SD11 TYPICAL PAVEMENT SECTION
- SD12 PRECAST CONCRETE WHEEL STOP
- SD15 ACCESSIBLE PARKING SIGN
- SD18 STOP BAR
- SD25 CURB WALK
- SD26 DETECTABLE WARNING DETAIL
- SD04 CONNECTION TO EXISTING PAVEMENT
- SD35 CONCRETE PAVEMENT SECTION
- SD40 POSTED CONSERVATION EASEMENT SIGN DETAIL
- SS-30 SERVICE POLE DETAIL

**SITE NOTES**

- S01 SPECIAL EMPHASIS CROSS WALK PER FDOT INDEX 711-001.
- S02 TIE INTO EXISTING PAVEMENT
- S03 TURN LANE-USE ARROW (RIGHT OR LEFT TURN) PER FDOT INDEX 711-001.
- S04 THROUGH LANE-USE ARROW PER FDOT INDEX 711-001.
- S05 ADA PAVEMENT MARKING PER FDOT INDEX 711-001.
- S06 6" YELLOW PAINT STRIPE
- S07 ROAD ENDS SIGN (MUTCD W14-2A) PER STANDARD HIGHWAY SIGNS
- S10 GUARDRAIL PER FDOT INDEX 536-001.
- S11 PROPOSED TIMBER WALL WITH RAILING - SEE MANUFACTURER'S SPECIFICATIONS (UNDER A SEPARATE COVER) FOR DETAILS. A SEPARATE BUILDING PERMIT IS REQUIRED FOR THIS WALL.
- S14 PEDESTRIAN CROSSING PER MUTCD W11-2A
- S15 PEDESTRIAN CROSSING ARROW PLATE PER MUTCD W16-7P
- SD3 MAIL KIOSK

**GENERAL NOTES**

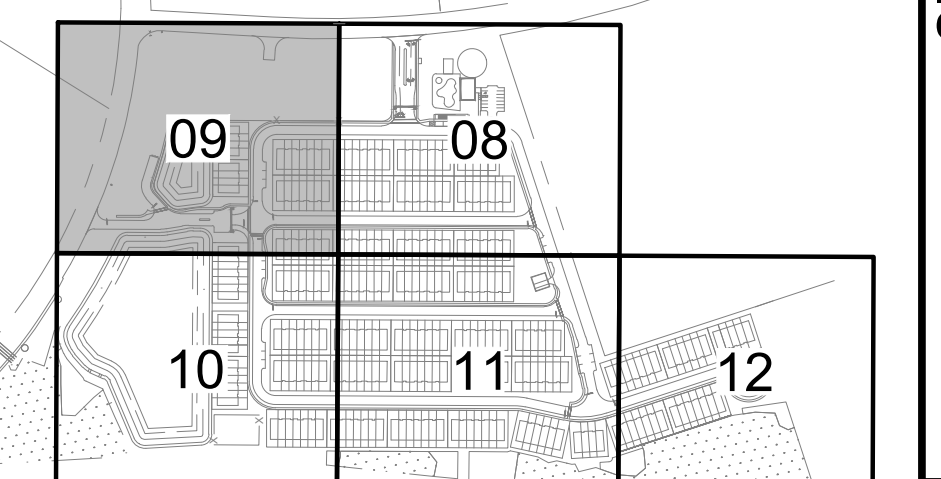
- 1. ALL DIMENSIONS ARE LISTED TO THE EDGE OF PAVEMENT AND/OR FACE OF CURB.
- 2. ALL RADII ARE 5' UNLESS OTHERWISE NOTED.

**HATCH LEGEND**

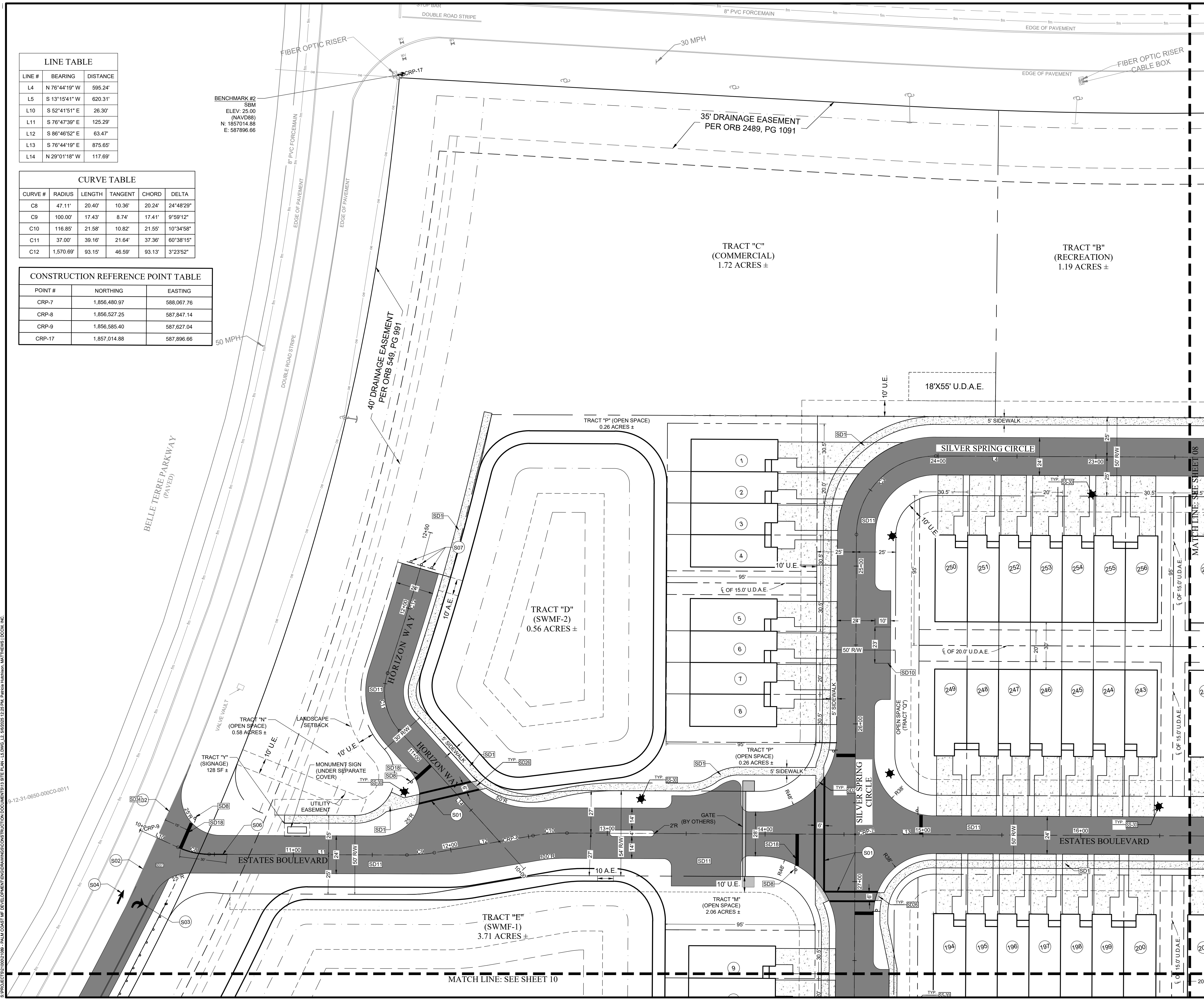
INTERNAL PAVEMENT	[Hatch pattern]
COPC PAVEMENT	[Hatch pattern]
CONCRETE	[Hatch pattern]
WETLANDS	[Hatch pattern]

**BENCHMARKS**

- BM1 FUND LB7143  
N: 1856424.54, E: 587519.25, 24.65 NAVD '88
- BM2 SBM  
N: 1857014.88, E: 587896.66, 25.00 NAVD '88
- BM3 SET 1/2" IRON PIPE & CAP  
N: 1857077.32, E: 587907.17, 24.49 NAVD '88
- BM4 SET 1/2" IRON PIPE & CAP STAMPED "LB 6997"  
N: 1856837.00, E: 588797.86, 23.53 NAVD '88
- BM5 SET MAIL  
N: 1855910.47, E: 588881.58, 22.03 NAVD '88



**SITE MAP**  
NTS



4/20/2023 10:52:08 AM PALM COAST MAP DEVELOPMENT ENGINEERING CONSTRUCTION CO. MATTHEWS SITE PLAN, L.D. DWG. L.D. 08/25/23 12:28 PM, Florida, Matthew, MATTHEWS, CCDC, INC. 412-31-0650-0000-0011

REVISIONS		DATE	DESCRIPTION
NO.	NO.		
1	1	11-04-24	PER SJRWMD COMMENTS
2	2	01-09-25	PER CITY OF PALM COAST COMMENTS
3	3	12-20-24	PER SJRWMD COMMENTS
4	4	03-19-25	PER CITY OF PALM COAST COMMENTS
5	5	05-06-25	PER CITY OF PALM COAST COMMENTS

DATE	BY	PHASE
08-21-24	FRJ	FRJ
08-21-24	FRJ	FRJ
08-21-24	FRJ	FRJ
08-21-24	FRJ	FRJ
08-21-24	FRJ	FRJ

**REGISTERED ENGINEER**  
 CA26253 - FL PIPE NO. 42844  
**MARK GOLDSHMIDT**

**MATTHEWS** **CCDC**

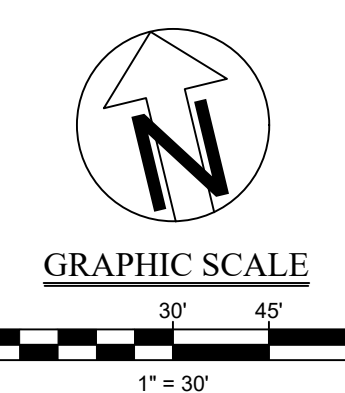
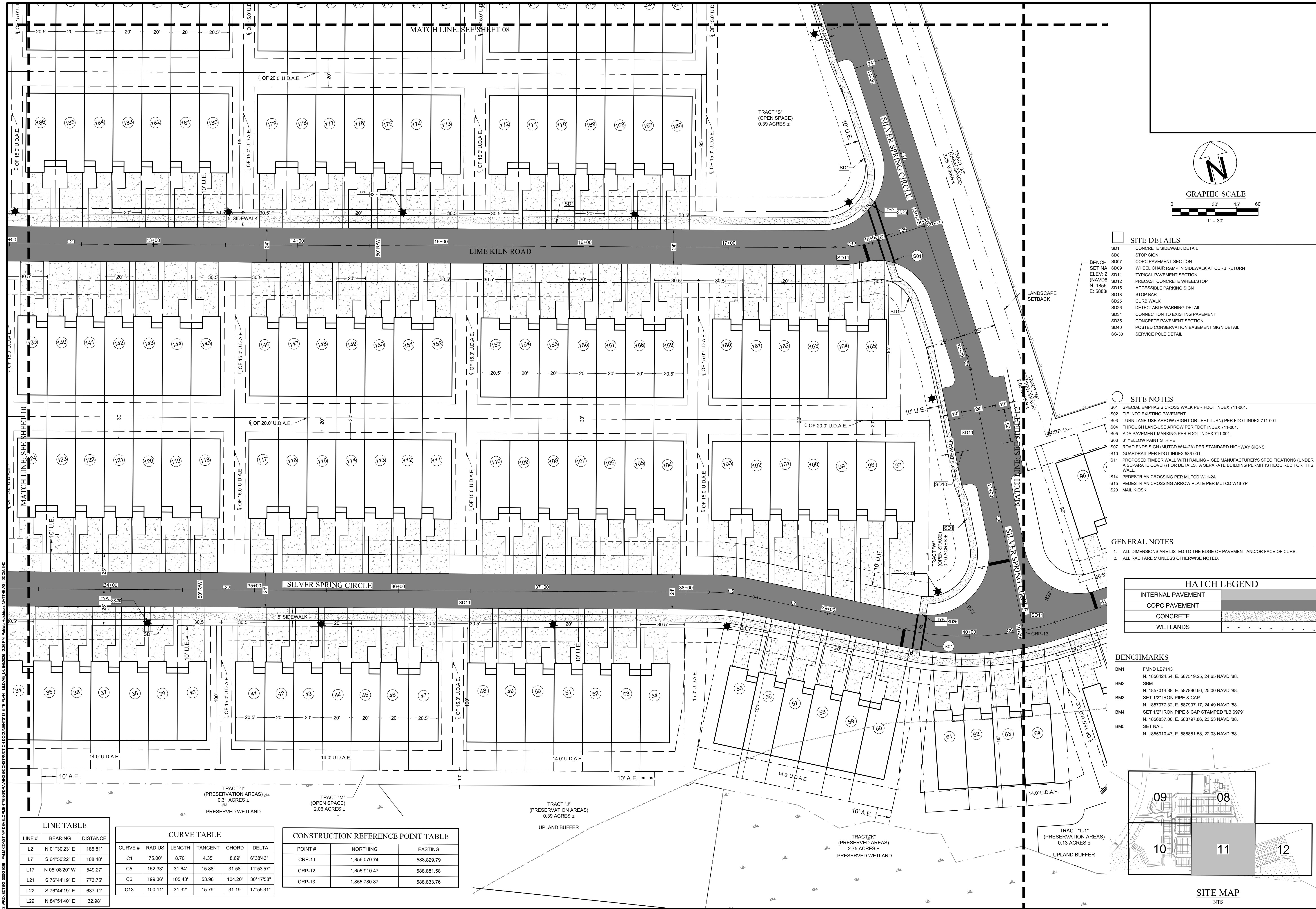
P.O. BOX 3126, 7 WALDO STREET  
 ST. AUGUSTINE, FL 32084  
 PHONE: 904.826.1334 • FAX: 904.826.4547  
 INFO@MDGINC.COM

**SITE PLAN**  
**BELLE TERRE ESTATES**  
 CITY OF PALM COAST  
 PREPARED FOR  
**MARK GOLDSHMIDT**

SHEET NO. **09**  
 OF 70





**SITE DETAILS**

- SD1 CONCRETE SIDEWALK DETAIL
- SD2 STOP SIGN
- SD3 COPC PAVEMENT SECTION
- SD4 WHEEL CHAIR RAMP IN SIDEWALK AT CURB RETURN
- SD5 TYPICAL PAVEMENT SECTION
- SD6 PRECAST CONCRETE WHEELSTOP
- SD7 STOP BAR
- SD8 ACCESSIBLE PARKING SIGN
- SD9 CURB WALK
- SD10 DETECTABLE WARNING DETAIL
- SD11 CONNECTION TO EXISTING PAVEMENT
- SD12 CONCRETE PAVEMENT SECTION
- SD13 POSTED CONSERVATION EASEMENT SIGN DETAIL
- SD14 SERVICE POLE DETAIL

**SITE NOTES**

- S01 SPECIAL EMPHASIS CROSS WALK PER FDOT INDEX 711-001.
- S02 TIE INTO EXISTING PAVEMENT
- S03 TURN LANE-USE ARROW (RIGHT OR LEFT TURN) PER FDOT INDEX 711-001.
- S04 THROUGH LANE-USE ARROW PER FDOT INDEX 711-001.
- S05 ADA PAVEMENT MARKING PER FDOT INDEX 711-001.
- S06 6" YELLOW PAINT STRIPE
- S07 ROAD ENDS SIGN (MUTCD W14-2A) PER STANDARD HIGHWAY SIGNS
- S10 GUARDRAIL PER FDOT INDEX 536-001.
- S11 PROPOSED TIMBER WALL WITH RAILING - SEE MANUFACTURER'S SPECIFICATIONS (UNDER A SEPARATE COVER) FOR DETAILS. A SEPARATE BUILDING PERMIT IS REQUIRED FOR THIS WALL.
- S14 PEDESTRIAN CROSSING PER MUTCD W11-2A
- S15 PEDESTRIAN CROSSING ARROW PLATE PER MUTCD W16-7P
- S20 MAIL KIOSK

**GENERAL NOTES**

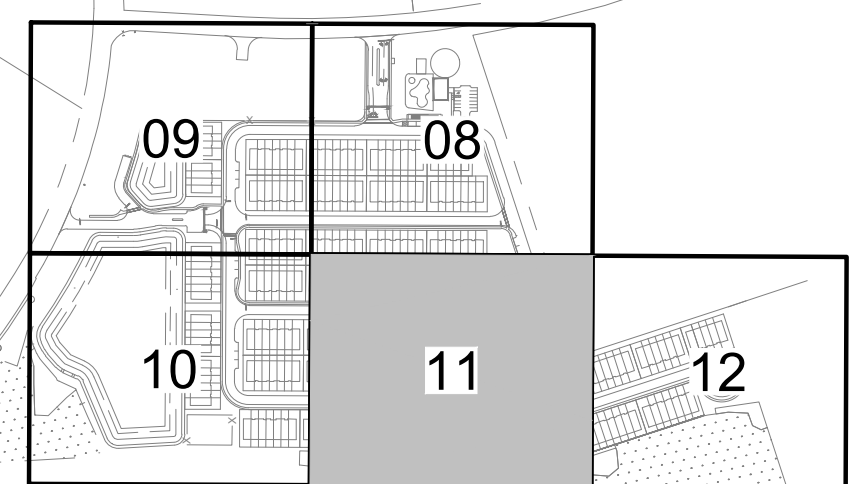
- 1. ALL DIMENSIONS ARE LISTED TO THE EDGE OF PAVEMENT AND/OR FACE OF CURB.
- 2. ALL RADII ARE 5' UNLESS OTHERWISE NOTED.

**HATCH LEGEND**

INTERNAL PAVEMENT	[Hatch pattern]
COPC PAVEMENT	[Hatch pattern]
CONCRETE	[Hatch pattern]
WETLANDS	[Hatch pattern]

**BENCHMARKS**

- BM1 F.M.D. LB7143  
N. 1856424.54, E. 587519.25, 24.65 NAVD '88
- BM2 SBM  
N. 1857014.88, E. 587896.66, 25.00 NAVD '88
- BM3 SET 1/2" IRON PIPE & CAP  
N. 1857077.32, E. 587907.17, 24.49 NAVD '88
- BM4 SET 1/2" IRON PIPE & CAP STAMPED "LB 6979"  
N. 1856837.00, E. 588797.86, 23.53 NAVD '88
- BM5 SET NAIL  
N. 1855910.47, E. 588881.58, 22.03 NAVD '88



**SITE MAP**  
NTS

**LINE TABLE**

LINE #	BEARING	DISTANCE
L2	N 01°30'23" E	185.81'
L7	S 64°50'22" E	108.48'
L17	N 05°08'20" W	549.27'
L21	S 76°44'19" E	773.75'
L22	S 76°44'19" E	637.11'
L29	N 84°51'40" E	32.98'

**CURVE TABLE**

CURVE #	RADIUS	LENGTH	TANGENT	CHORD	DELTA
C1	75.00'	8.70'	4.35'	8.69'	6°38'43"
C5	152.33'	31.64'	15.88'	31.58'	11°53'57"
C6	199.36'	105.43'	53.98'	104.20'	30°17'58"
C13	100.11'	31.32'	15.79'	31.19'	17°55'31"

**CONSTRUCTION REFERENCE POINT TABLE**

POINT #	NORTHING	EASTING
CRP-11	1,856,070.74	588,829.79
CRP-12	1,855,910.47	588,881.58
CRP-13	1,855,780.87	588,833.76

**MATTHEWS | BCCM**

P.O. BOX 3126, 7 WALDO STREET  
ST. AUGUSTINE, FL 32084  
PHONE: 904.826.1334 • FAX: 904.826.4547  
INFO@MDJINC.COM

**SITE PLAN**

**BELLE TERRE ESTATES**  
CITY OF PALM COAST  
PREPARED FOR  
MARK GOLDSHMIT

SHEET NO. **11**  
OF 70

NO.	DATE	DESCRIPTION
1	11-04-24	PER SJRWMD COMMENTS
2	01-09-25	PER CITY OF PALM COAST COMMENTS
3	12-20-24	PER SJRWMD COMMENTS
4	03-19-25	PER CITY OF PALM COAST COMMENTS
5	05-06-25	PER CITY OF PALM COAST COMMENTS

DESIGNED BY: TBPH  
PHASE: FRJ  
DATE: 08-21-24  
JOB NO.: 21089

REGISTERED ENGINEER  
CA26253 - FL PIPE NO. 42844

THIS DOCUMENT IS THE PROPERTY OF MATTHEWS CONSULTING ENGINEERS, INC. IT IS TO BE USED ONLY FOR THE PROJECT AND SITE SPECIFICALLY IDENTIFIED HEREIN. IT IS NOT TO BE REPRODUCED, COPIED, OR TRANSMITTED IN ANY FORM OR BY ANY MEANS, ELECTRONIC OR MECHANICAL, INCLUDING PHOTOCOPYING, RECORDING, OR BY ANY INFORMATION STORAGE AND RETRIEVAL SYSTEM, WITHOUT THE WRITTEN PERMISSION OF MATTHEWS CONSULTING ENGINEERS, INC.

