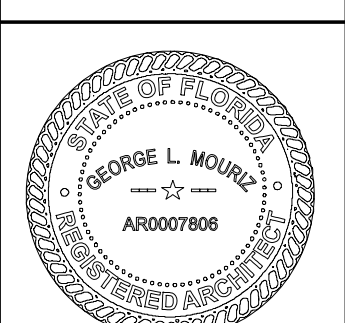


REVISIONS	BY
▲ BUILDING DEP. COM./OWNER REV. 10/20/2023	
▲ BLDG DEPT COMMENTS 01/10/2024	
▲ OWNER REQUESTED VE 07/29/2024	

SHALIMAR AT BOYNTON BEACH
FOR:
TM RESIDENTIAL
LOCATED AT:
BOYNTON BEACH, FLORIDA



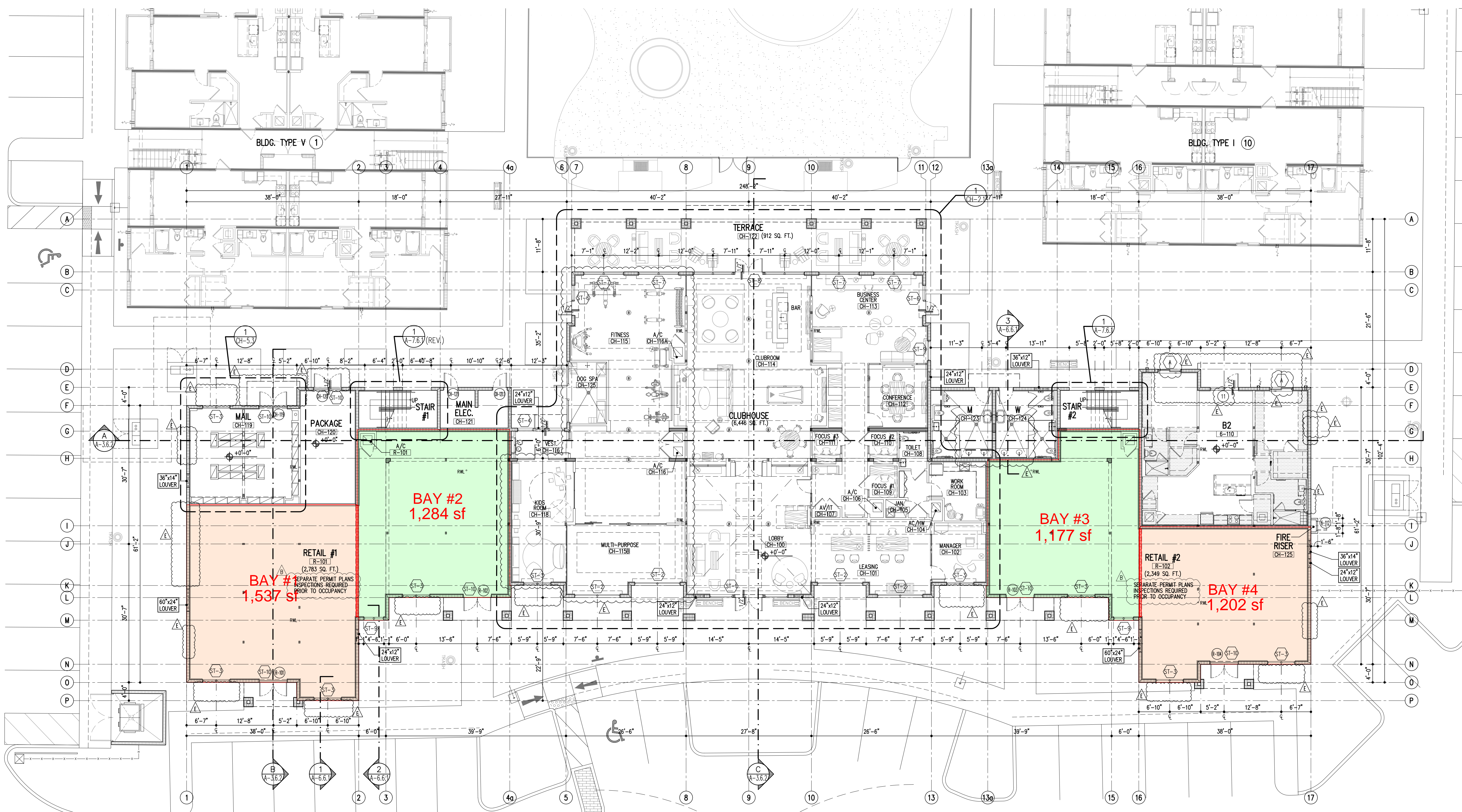
MSA ARCHITECTS, INC
AAC000895
8850 SW 74th COURT
MIAMI, FLORIDA 33156
(305) 273-9911

MSA ARCHITECTS
ARCHITECTURE & PLANNING

ARCHITECT'S BUILDING CODE STATEMENT: TO THE BEST OF THE ARCHITECT'S KNOWLEDGE THE PLANS AND SPECIFICATIONS COMPLY WITH THE FLORIDA BUILDING CODE SEVENTH EDITION (2020) AND THE APPLICABLE FIRE SAFETY STANDARDS AS DETERMINED BY THE LOCAL AUTHORITY AND CHAPTER 633 FLORIDA STATUTES.

COPYRIGHT © 2023 MSA ARCHITECTS, INC. THE ARCHITECTURAL DESIGN AND DETAIL DRAWINGS FOR THIS BUILDING AND/OR OVERALL PROJECT ARE THE LEGAL PROPERTY OF AND ALL RIGHTS ARE RESERVED BY THE ARCHITECT. THEIR USE FOR REPRODUCTION, CONSTRUCTION, OR DISTRIBUTION IS PROHIBITED UNLESS AUTHORIZED IN WRITING BY THE ARCHITECT.

DRAWN: [Signature]
CONTRACT DATE: 11/03/2021
SCALE: AS SHOWN
JOB NO.: 2068.PRJ
SHEET TITLE: BUILDING TYPE VI LEVEL 1
SHEET NUMBER: A-2.6.1



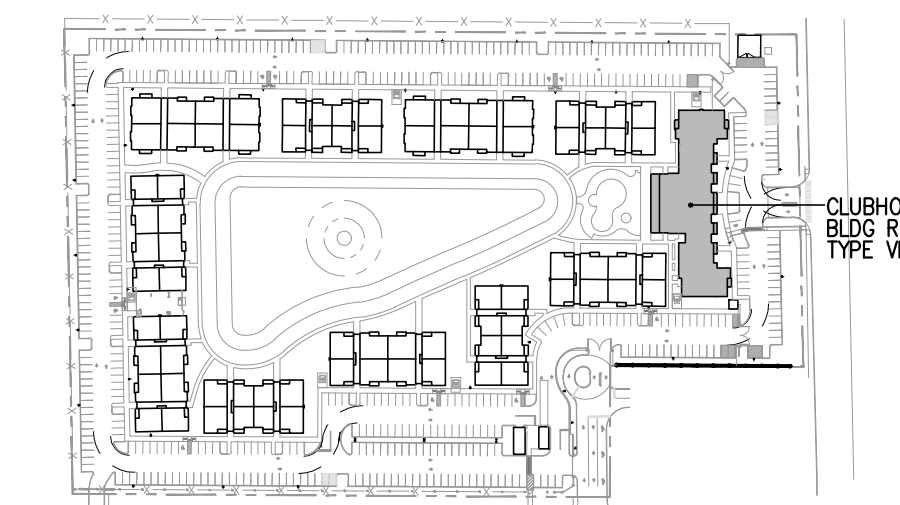
FLOOR PLAN LEVEL 1
SCALE: 3/32"=1'-0"

Type	Level 1	Level 2	Level 3	Total
Residential/Clubhouse	1,210 sf	12,243 sf	12,243 sf	25,696 sf
Leaseable	8,017 sf	1,991 sf	1,991 sf	11,999 sf
Non leaseable	5,580 sf			5,580 sf
Commercial	264 sf			264 sf
BOH				
Storage				
Subtotal	15,071 sf	14,234 sf	14,234 sf	43,539 sf
Efficiency per floor	8%	86%	86%	59%
Other areas				
Porches/balconies	63 sf	1,423 sf	745 sf	2,231 sf
Garage				
Subtotal	63 sf	1,423 sf	745 sf	2,231 sf
Project total	15,134 sf	15,657 sf	14,979 sf	45,770 sf

FLOOR PLAN WALL & SYMBOL LEGEND
(REFER TO LIFE SAFETY PLANS FOR FIRE-RATING)
(REFER TO FINISHES SCHEDULE AND ASSOCIATED SHEETS FOR ADDITIONAL INFORMATION)

- NON RATED INTERIOR 4" or 6" METAL STUD AND GMB PARTITION.
- METAL STUD PARTITION W/ INSULATION.
- 1-HR RATED METAL STUD PARTITION WITH INSULATION. REFER TO LIFE SAFETY PLANS FOR FIRE SEPARATION REQUIREMENTS.
- 2-HR RATED 8" (OR 12") CONC. MASONRY UNIT
- FRAMED DOWN EXTERIOR GRADE GYP. SHEATHING CEILING/SOFFIT W/ STUCCO OVER PAPER-BACKED MITL. LATH. FRAMING BY GC'S. SPECIALTY ENGINEER SUBMIT SHOP DWGS FOR APPROVAL.
- DROPPED CLG/SOFFIT. COORDINATE W/ MEP & FIRE SPRINKLER DWG'S AND ASSOCIATED TRADES FOR CLEARANCE REQUIREMENTS AND SOFFIT POCKET REQUIREMENTS. PRIOR TO FRAMING AND INSTALLATION. SEE GENERAL NOTES.
- STEEL COLUMN

A/C REF. LINES
UNIT KEY NOTES REFER TO LEGEND FOR DESIGNATION
DOOR DESIGNATION REFER TO DOOR SCHEDULE
WINDOW DESIGNATION REFER TO WINDOW SCHEDULE
DESIGNATES SOFFIT OR CEILING HEIGHT A.F.F.
FLOOR SLAB DEPRESSION SEE STRUCTURE
R.W.



BUILDING TYPE VI - PLANS
3 STORIES / - DU'S

REV. E - 07/29/2024