

CENTRAL PARK NORTH 404 W. POWELL LANE

SUITE C104 FLOOR PLAN

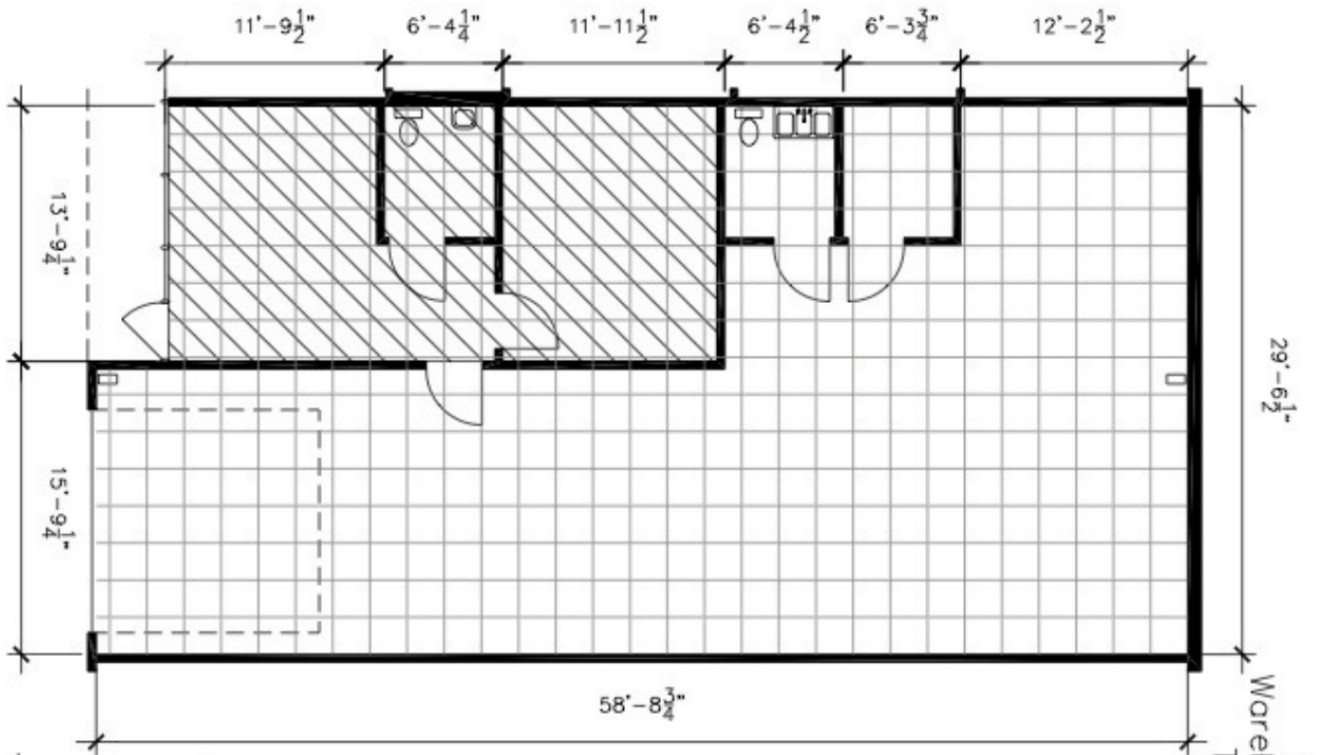
Asking Rent: \$1.15 / SF

Drawing for:
L.H. LAYNE COMPANY
404 W. Powell, Ste. 202
Austin, Texas 78753
Ph: 252-9900 Fax: 252-9902


SUITE 104
CENTRAL PARK NORTH
404 W. POWELL LN.
RENTABLE AREA: 1,798 S.F.

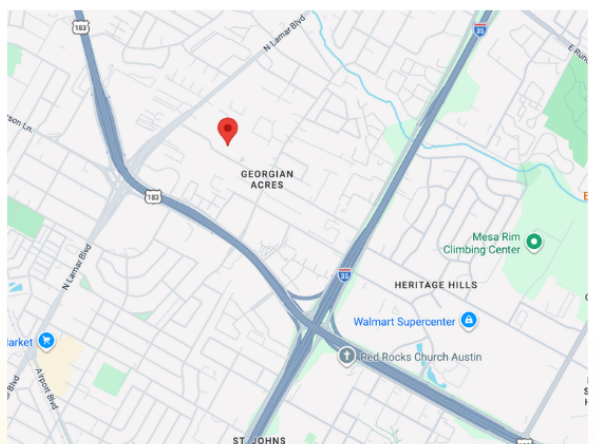
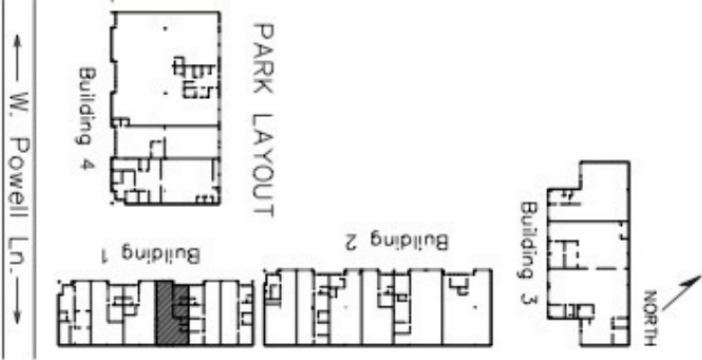
ALL DIMENSIONS AND
FLOOR PLANS ARE APPROXIMATE
TO WITHIN ONE INCH OR FRACTION
THEREOF. THESE DIMENSIONS ARE
APPROXIMATE TO ONE INCH.
Project No.: 20208-02
Date: April 4, 2003
©2003

4417 Spicewood Spgs. Rd., Ste 803
Austin, Texas 78759
Ph: 342-0114 Fax: 342-1965



Office SF = 465
Warehouse SF = 1,333
Total RSF = 1,798

NOTE:
Overlying grid is 2' x 2'
Not to scale.
 Air Conditioned Area



Contact Information:

(512) 252-9900
404 W Powell Lane, Suite 202, Austin, TX 78753
laynecompany.com