

LEASE

RETAIL



701 68TH ST SW



701 68TH ST SW, BYRON CENTER, MI 49315

PROPERTY OVERVIEW

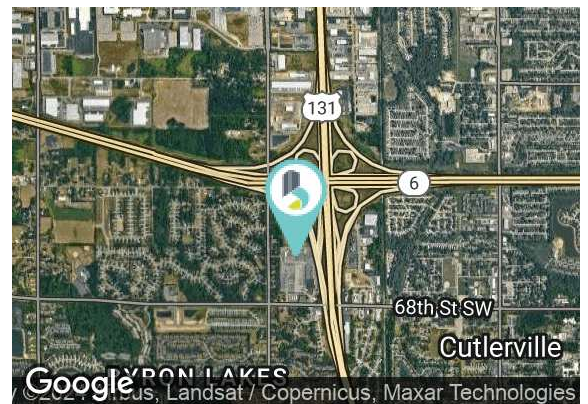
Located on the South Side of Grand Rapids, Suites 280 and 310 comprise approximately 3,700 sf of Class B retail. This Retail center sits just south of the heavily traveled M-6 and US-131 interchange, minutes south of Downtown Grand Rapids. Major anchor tenants in the center draw large numbers of consumers, mixed with a plentiful number of local retailers to neighbor.

PROPERTY HIGHLIGHTS

- Located immediately off the US 131 interchange.
- Strong mix of national and local tenants
- Ample parking 1156 spaces
- 74,197 SF Shopping center
- Traffic Counts: 68th-14,194 US-131 - 20,078 M6: 54,474

LEASE RATE \$8.00 SF/YR (NNN)

Available SF: 3,762 SF



BRADLEY COMPANY
220 Lyon St. NW, Suite 400
Grand Rapids, MI 49503
616.254.0005

R. KYLE GROOTERS
Senior Associate Broker - Industrial Specialist
616.254.0005
rkg@bradleyco.com



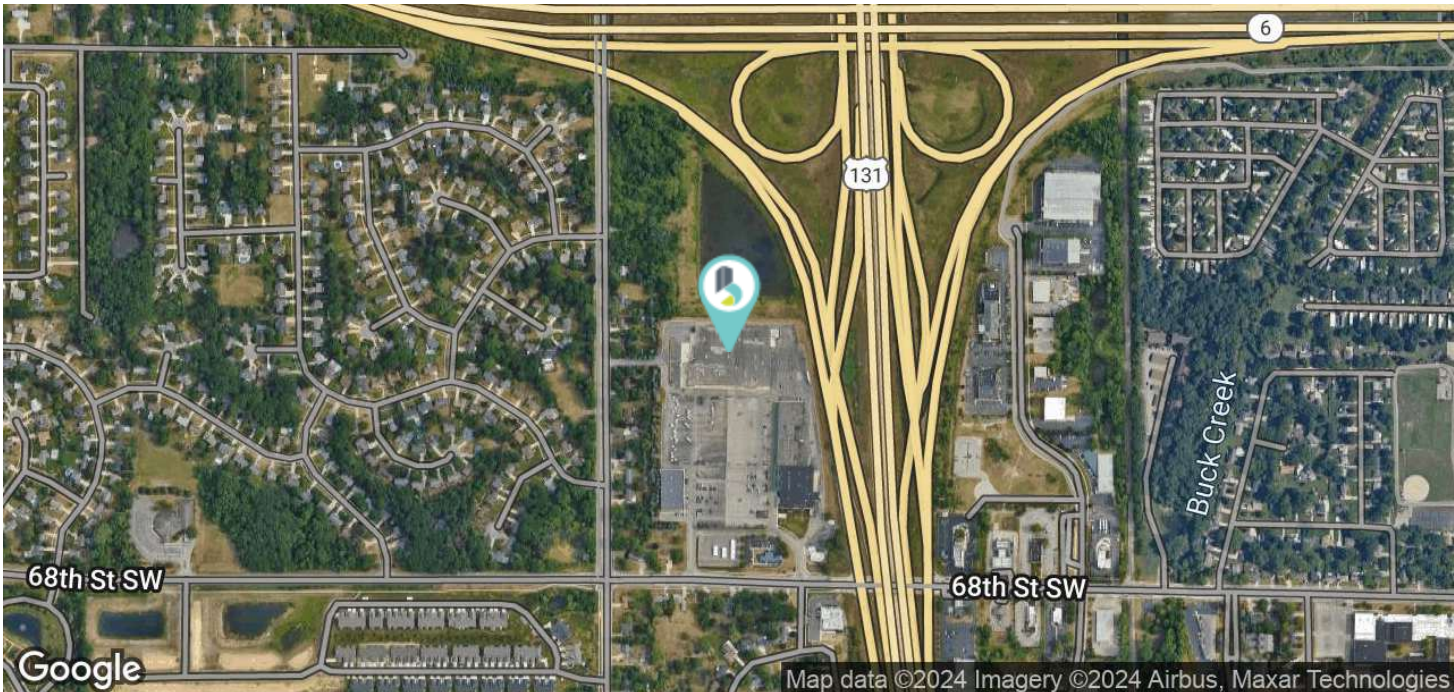
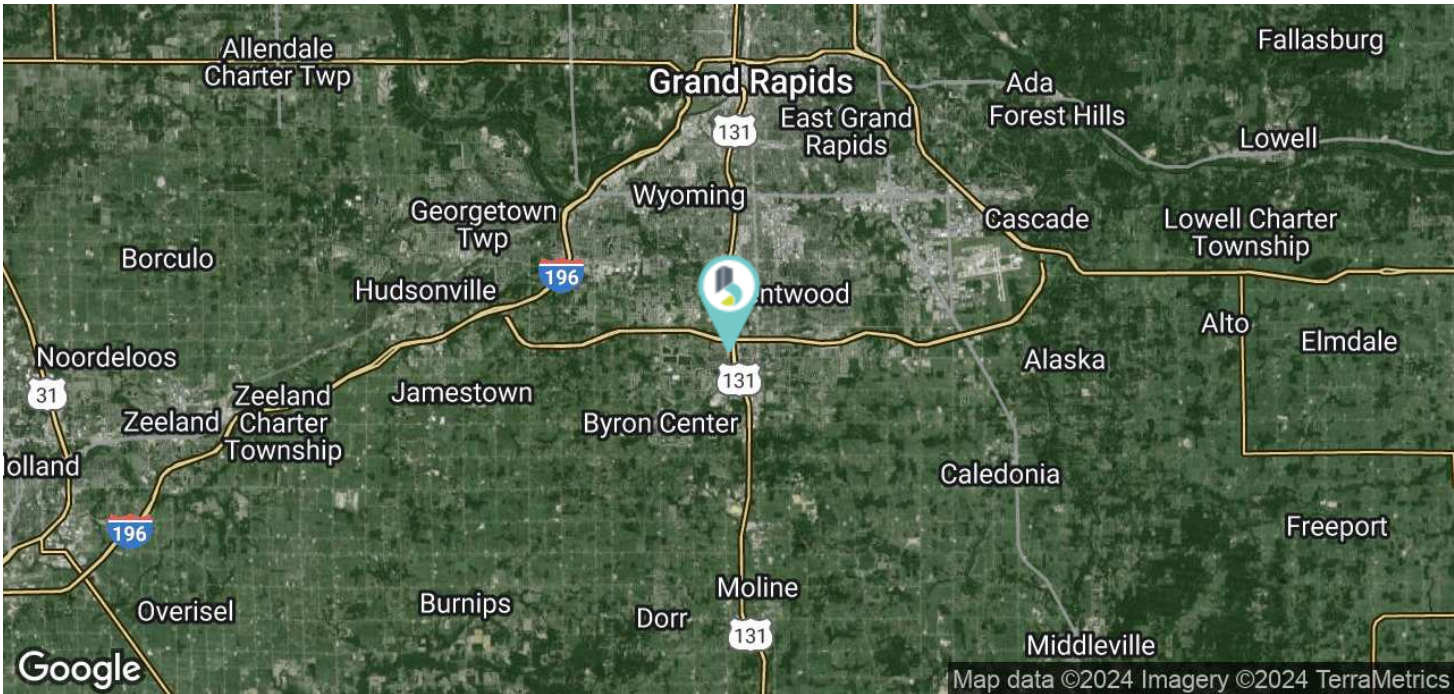
BRADLEYCO.COM



701 68TH ST SW, BYRON CENTER, MI 49315

LEASE

RETAIL



R. KYLE GROOTERS
Senior Associate Broker - Industrial Specialist
616.254.0005
rkg@bradleyco.com

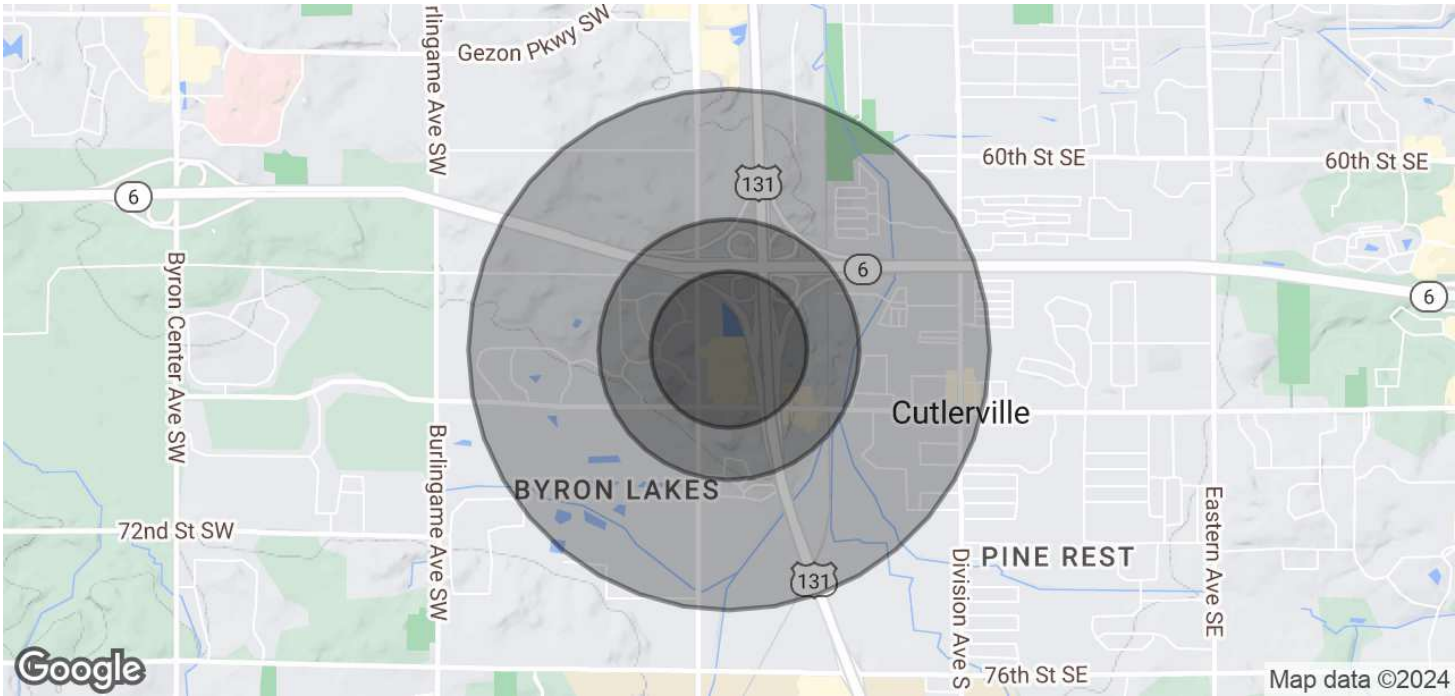


DEMOGRAPHICS MAP & REPORT

701 68TH ST SW, BYRON CENTER, MI 49315

LEASE

RETAIL



POPULATION	0.3 MILES	0.5 MILES	1 MILE
Total Population	191	1,524	8,488
Average Age	39	44	40
Average Age (Male)	38	43	38
Average Age (Female)	41	46	41
HOUSEHOLDS & INCOME	0.3 MILES	0.5 MILES	1 MILE
Total Households	63	603	3,239
# of Persons per HH	3	2.5	2.6
Average HH Income	\$121,870	\$90,184	\$80,019
Average House Value	\$331,666	\$264,782	\$212,193

Demographics data derived from AlphaMap

R. KYLE GROOTERS
 Senior Associate Broker - Industrial Specialist
 616.254.0005
 rkg@bradleyco.com

©2024 Bradley Company, LLC and affiliates. Use of any third party name or mark is for informational purposes only and does not indicate sponsorship or endorsement by such party. Not all information has been independently verified, and the presenting broker makes no guarantee about its accuracy. Any projections, opinions, or estimates are for example only. Before completing a real estate transaction, you and your advisors should conduct an independent investigation of the property to determine its suitability for your needs.