

For Lease

2720 N Ontario St Burbank | CA



Presented By:

Scott Cox
818.244.3000

scott@pacwestonline.com
DRE#01070703

Randy Rohrer
818.244.3000

randy@pacwestonline.com
DRE#00672287

Ron Rohrer
818.309.0628

ron@pacwestonline.com
DRE#01918399

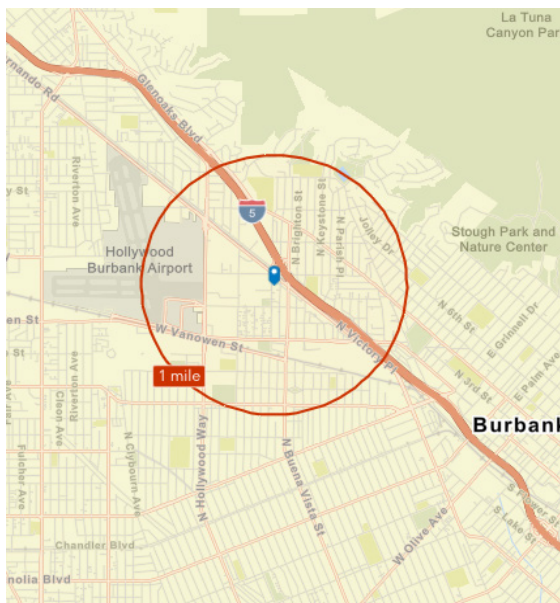
Christopher Rohrer
818.624.1180

chris@pacwestonline.com
DRE#02018754



Property Information

Available SF:	2,630 SF	› 12 Foot Clearance
Asking Price:	\$6,445 (\$2.45/SF)	› 1 Ground Loading Doors
Lease Type:	Industrial Gross	› Full HVAC
Power:	200 A; 480V; 3 Ph	› Concrete Block Construction
Zoning:	M-2	› Close to Burbank Airport
Parking:	3+	› Newly Renovated
Built:	1976	› Corner Lot



20,238

Population



2.6

Average Household Size



39.8

Median Age

\$98,065

Median Household Income



7.6%

No High School Diploma



18.2%

High School Graduates



28.5%

Some College/ Associate's Degree



45.7%

Bachelor's/Graduate/ Prof Degree

BUSINESS



1,124

Total Businesses



19,941

Total Employees

EMPLOYMENT



74.6%

White Collar



Blue Collar



Services

10.8%

14.6%

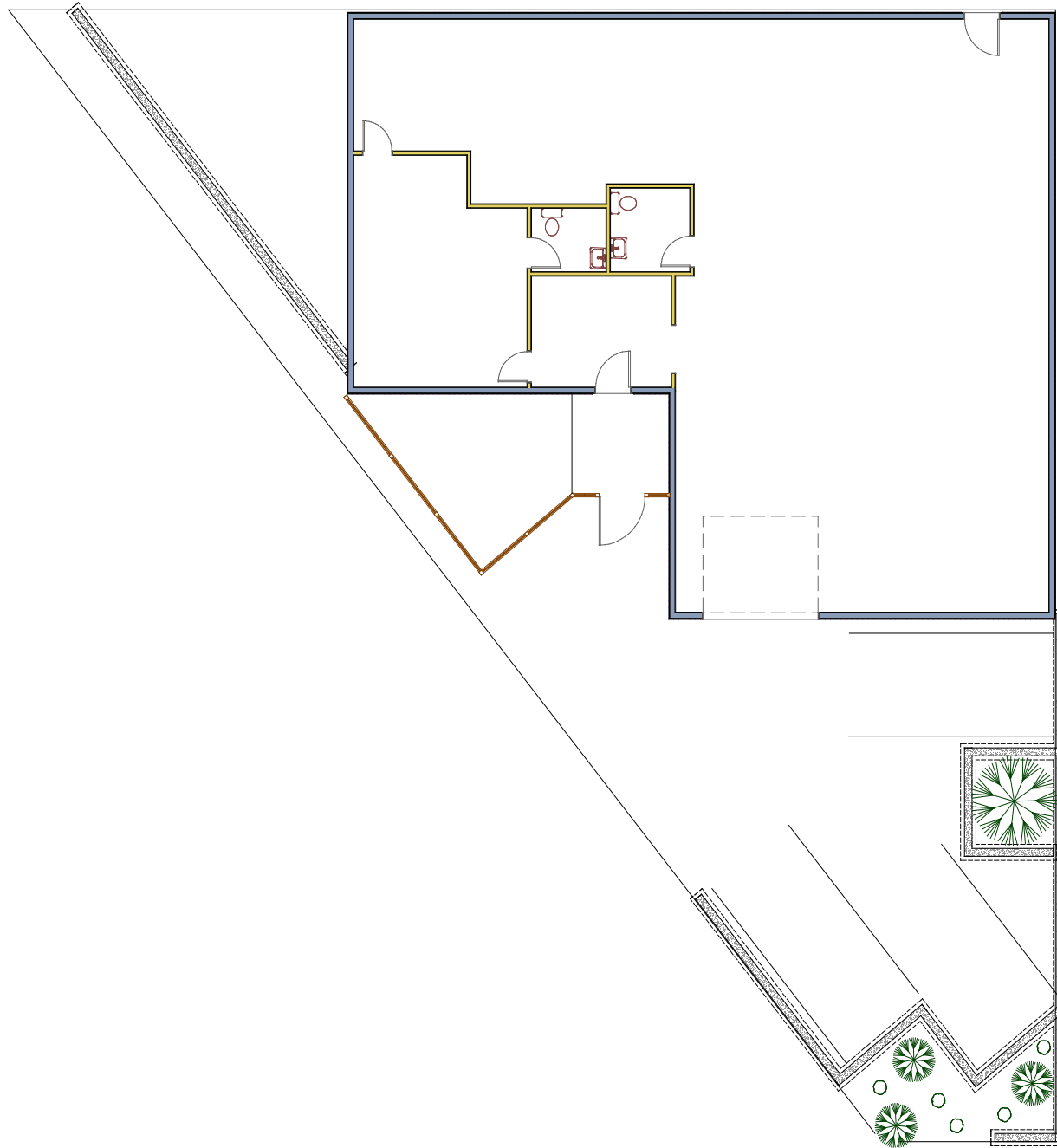


5.7%

Unemployment Rate

The facts contained herein, while not guaranteed as to accuracy, are accurate to the best of our knowledge and belief.

Floor Plan



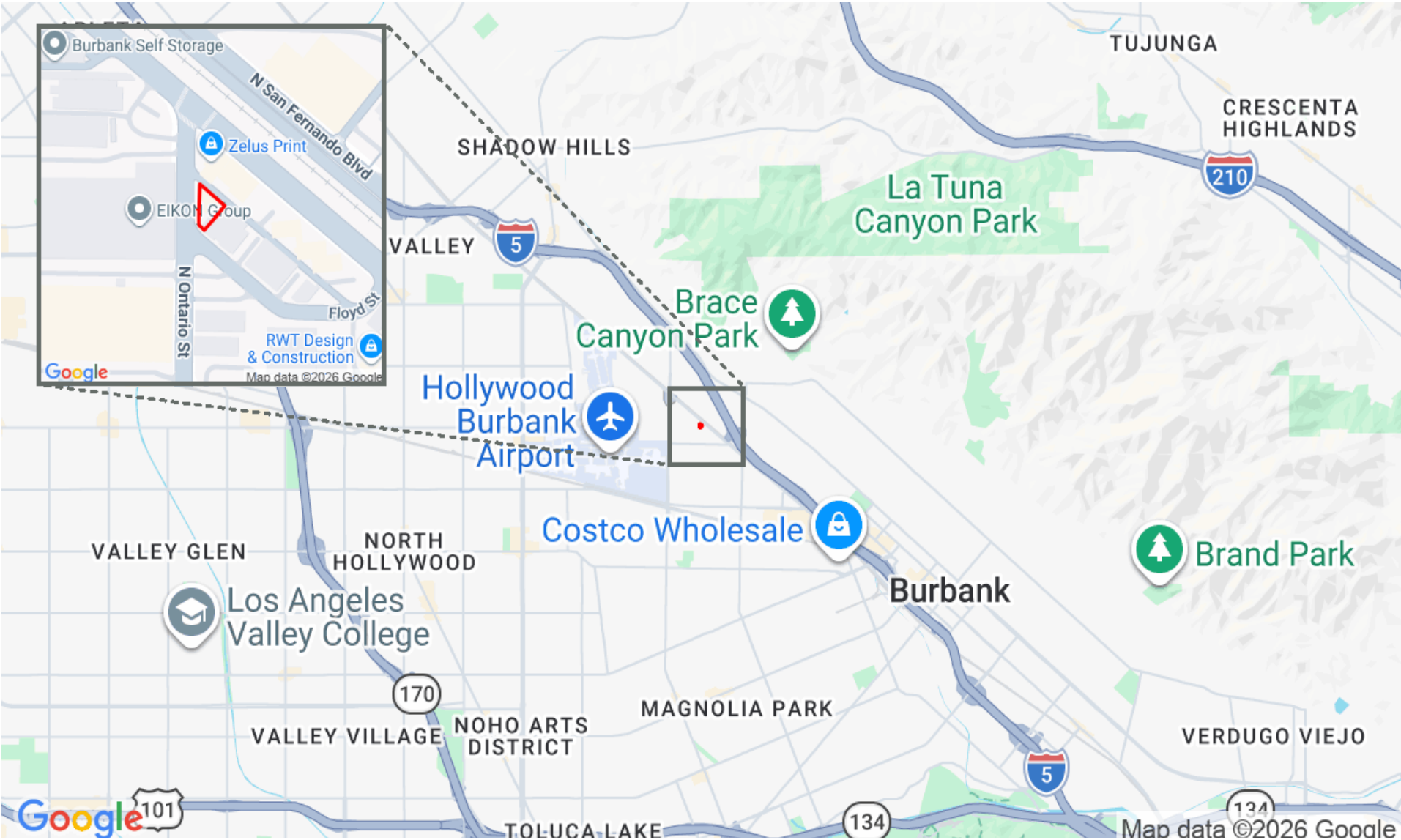
Map Location

2720 N Ontario St



Pacific West Business Properties, Inc.

6624 San Fernando Road Glendale, CA 91201 | 818-244-3000



Photos

