

# BUILDING EXPANSION

401 EAST CONDE STREET  
JANESVILLE, WISCONSIN

October 29, 2021



Corporate  
Contractors, Inc.

# VISION

PATCH CONCRETE SLAB  
1/2" @ 10" O.C.  
2 CHANNEL  
C 15x33.9  
4 A.B. @ 4' O.C.  
18x1" x 14" BAS  
CEMENT GRO  
2x2x2/4" PIER  
8-#6 VERT. RODS  
W/ 3-#3 TIES @ 12"  
FTG. 2-0 x 5 1/2" x 24"  
13-#6 TR. @ 6" O.C.

PHASE IV  
6/9/81  
COLUMN M4A "LOOKING SOUTH"  
SCALE: 3/4" = 1'-0"

A. L. Gearhammer  
Contractor and Builder

ALSO DEALER IN:  
LUMBER, SHINGLES,  
LATH, ETC., AND ALL  
KINDS OF MILL WORK.

YARD:  
Corner Merrill and Bluff Sts.

BELOIT  
WISCONSIN  
1902

confidence

Design is where science  
and art break even

## THE VIBE

EDGAR D. BULLOCK,  
A. C. HINT,  
BELOIT, WIS.

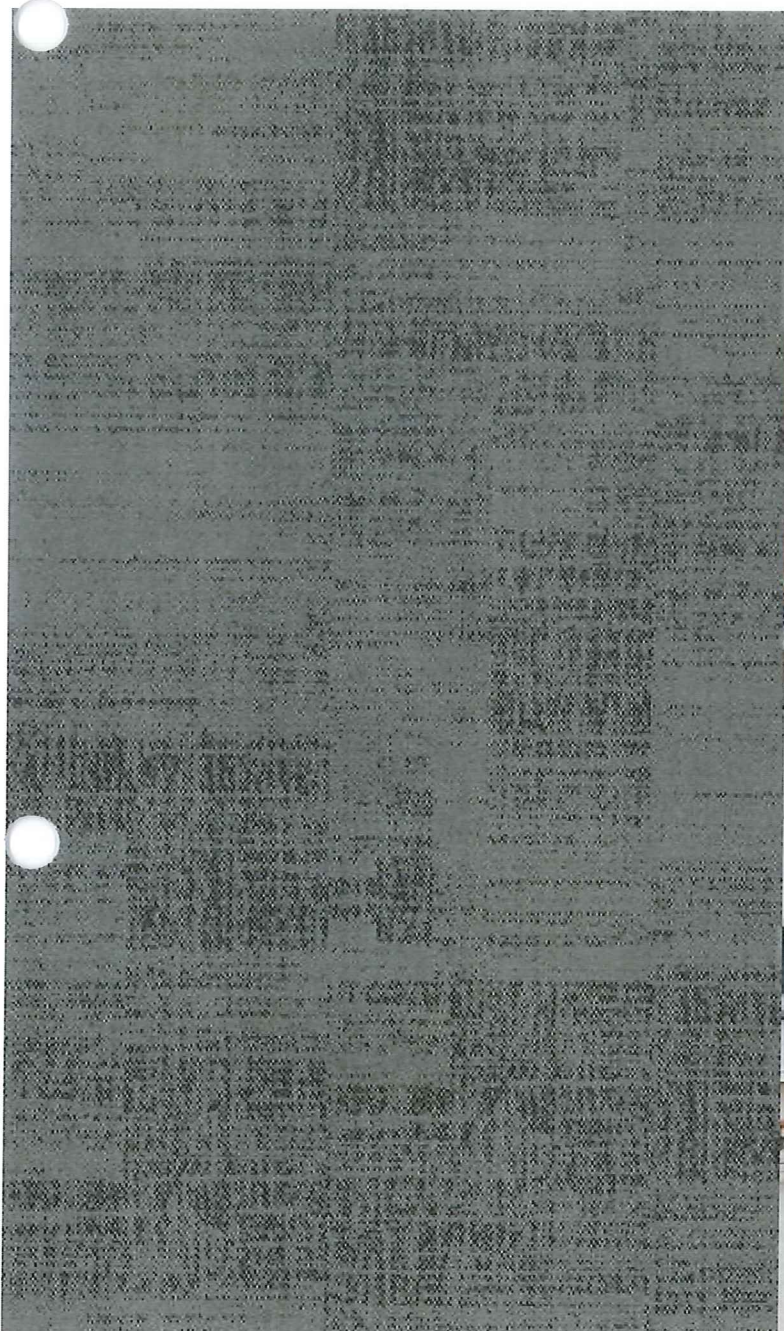
HOW DOES IT FEEL?

BRIGHT  
CONTEMPORARY  
VERSATILE  
ORIGINAL



**BUILDING EXPANSION**  
*401 East Conde Street*

# WHAT DOES IT LOOK LIKE?



**CCI** Corporate  
Contractors, Inc.

## BUILDING EXPANSION

*401 East Conde Street*



ambition

empower

DESIGN SCHEMATICS

solutions

"It's not hard to make



**CCI** Corporate  
Contractors, Inc.

RENDERING, WEST FACADE



**CCI** Corporate  
Contractors, Inc.

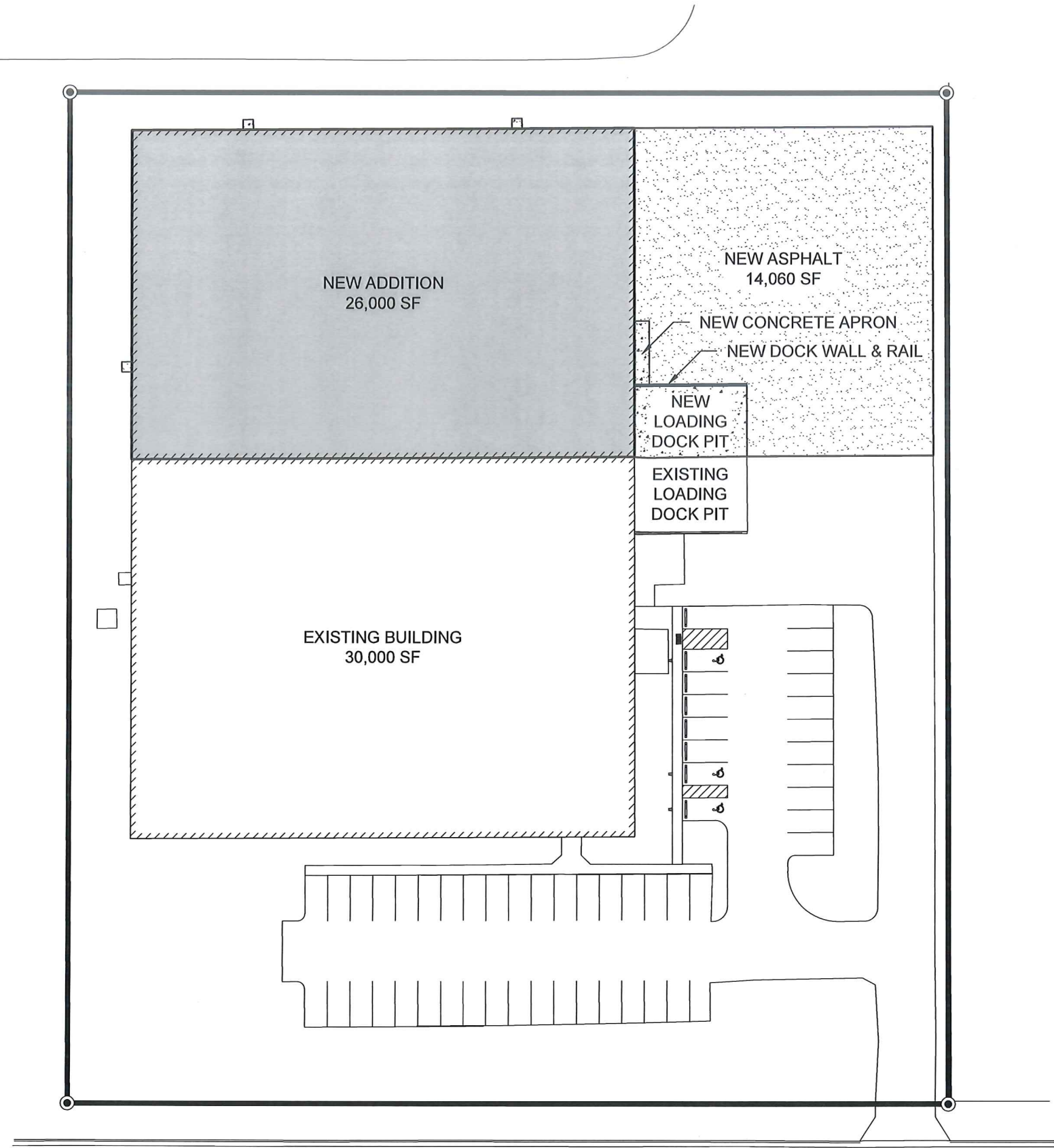
RENDERING, PARTIAL WEST FACADE

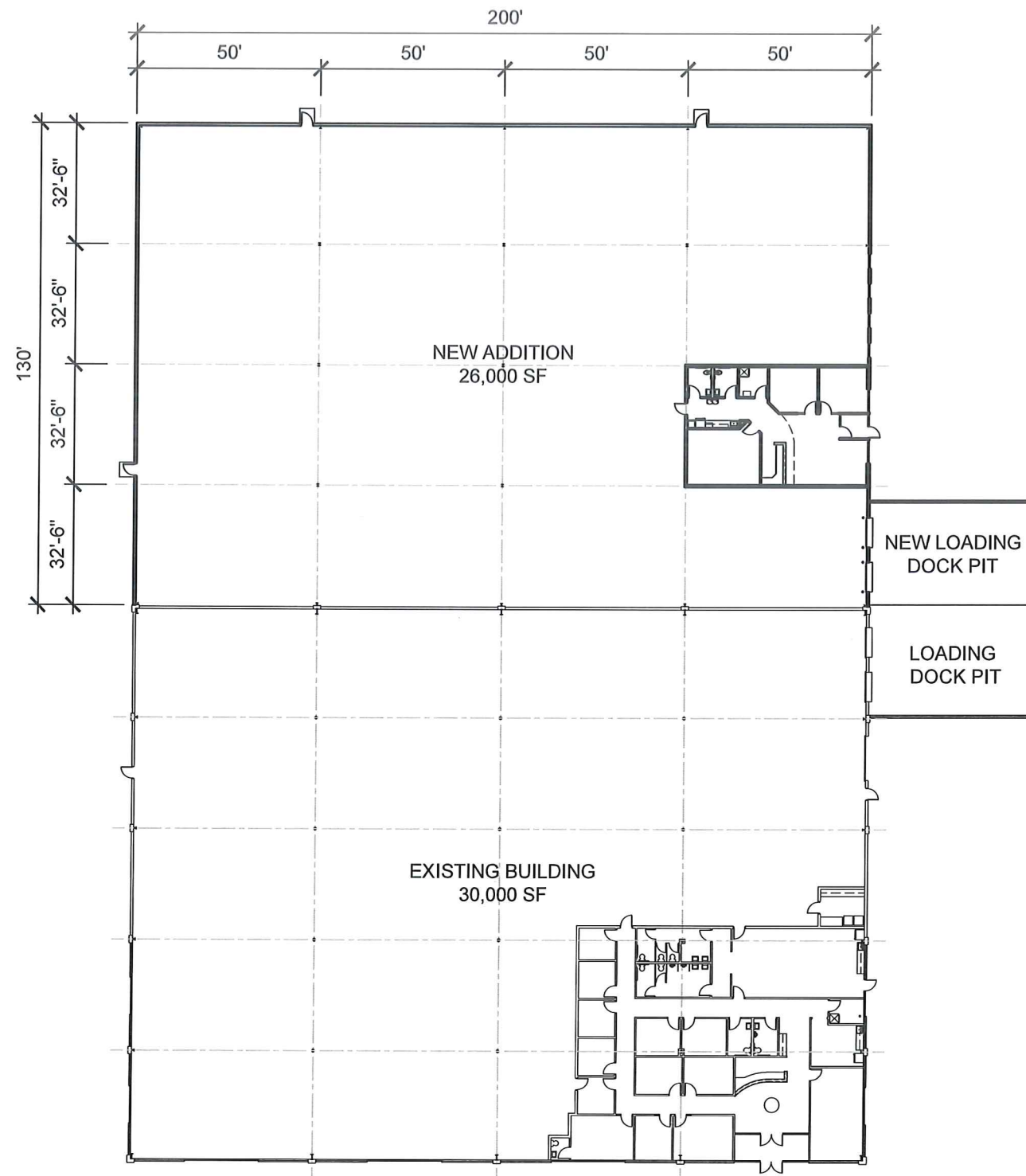


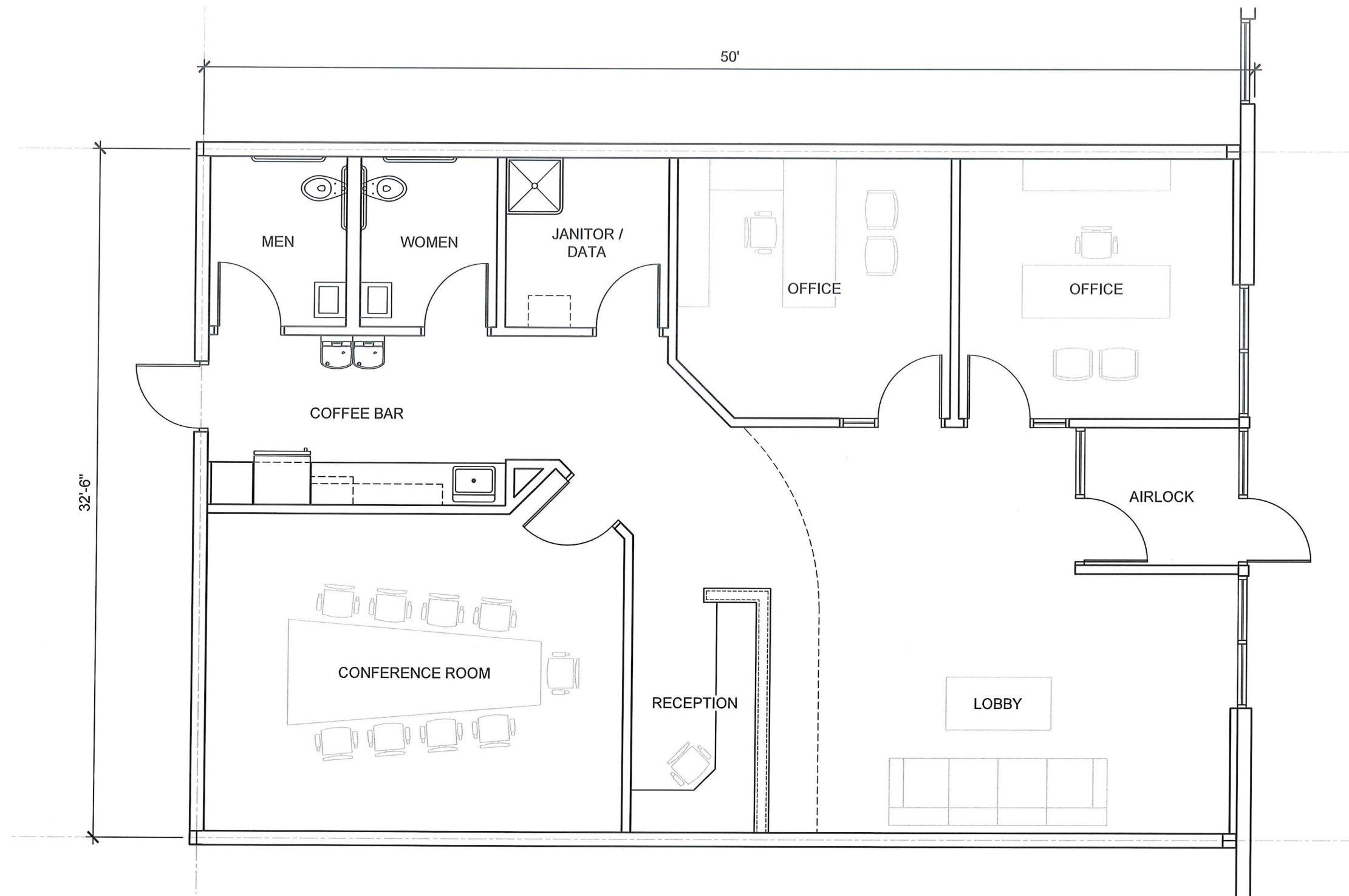
**CCCI** Corporate  
Contractors, Inc.

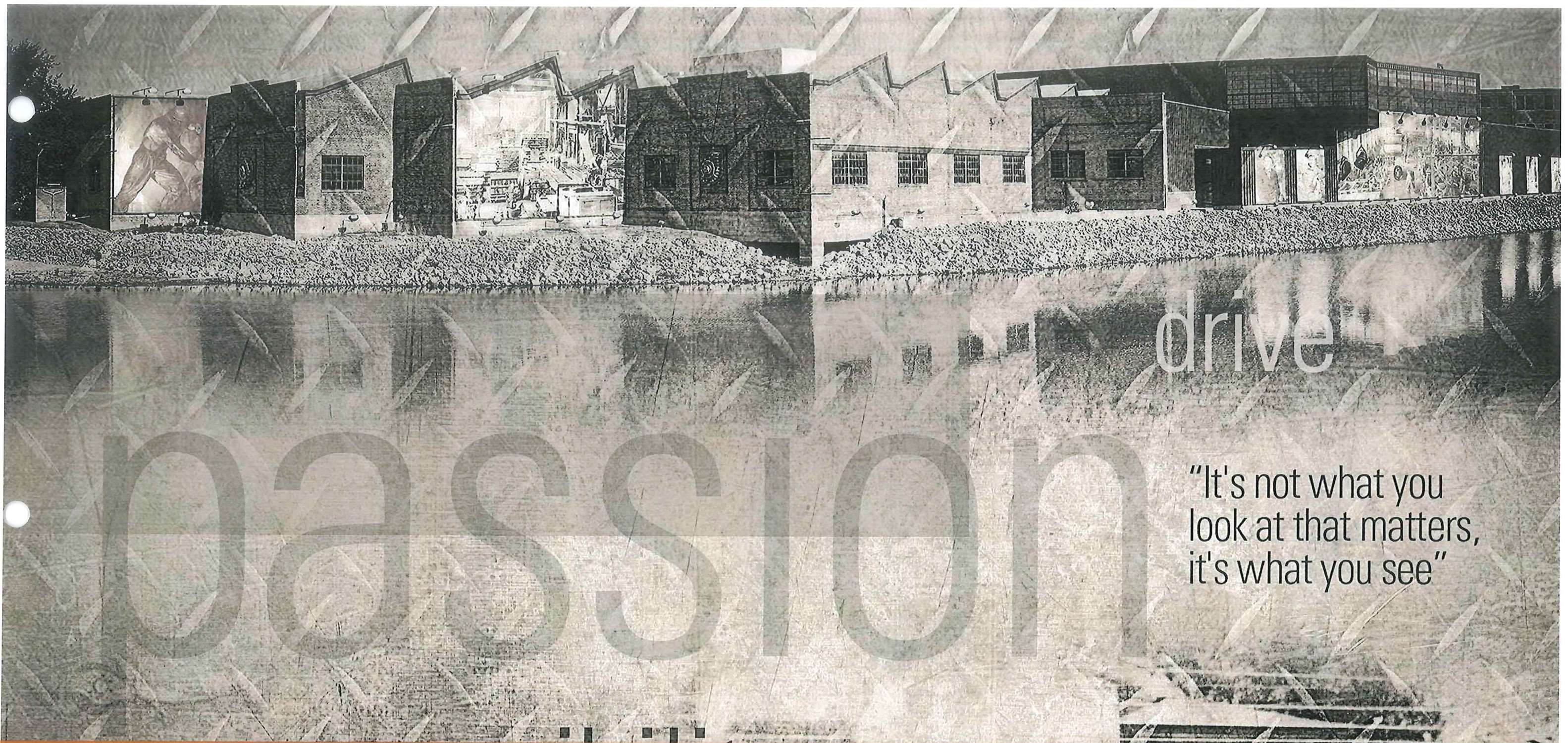
RENDERING, PARTIAL WEST FACADE

# SITE PLAN







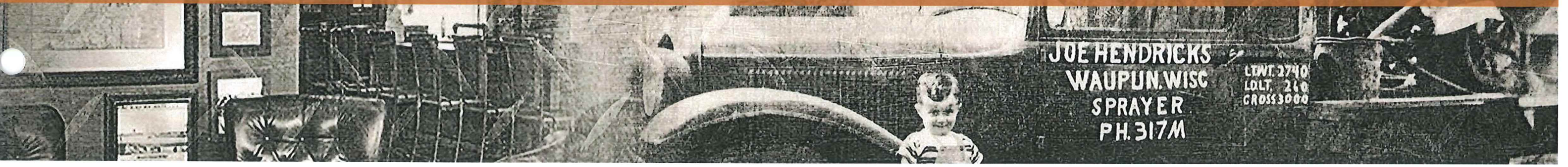


drive

MISSION

"It's not what you look at that matters, it's what you see"

# PRECIDENT PROJECTS



JOE HENDRICKS  
WAUPUN, WISC  
SPRAYER  
PH. 317M

LTWT. 2740  
LOLT. 260  
GROSS 3000

# METSO USA ADDITION

Beloit, WI

8,000 sqft facility addition



# NORTHSTAR MEDICAL RADIOISOTOPES

Beloit, WI

50,000 sqft facility that includes a 3,000 sqft mezzanine, clean rooms, radioactive isolation spaces and material handling systems for the production of molybdenum-99



# IRONTEK

Beloit, WI

9,000 sqft renovation and build-out of a business center that includes a mezzanine, conference rooms, kitchen area and several office areas



Corporate Contractors, Inc.

# HCP OFFICE

Beloit, WI

12,000 sqft renovation and office build-out within a former industrial facility

