

# 5712 DOT COM CT STANDALONE BUILDING

FOUNDRY  
COMMERCIAL

20,091 SF AVAILABLE

FULLY AIR CONDITIONED SPACE



**CFRC**

**CENTRAL FLORIDA  
RESOURCE CENTER**

# CENTRAL FLORIDA RESOURCE CENTER

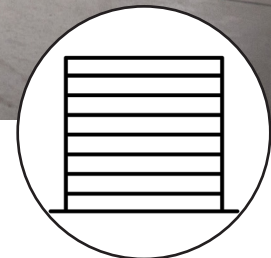
## PROPERTY FEATURES

### INDUSTRIAL SPACE

Central Florida Resource Center is located in Oviedo, a premier Orlando suburb that offers close proximity to UCF, Orlando Research Park, and the Downtown Core.

### PROPERTY FEATURES

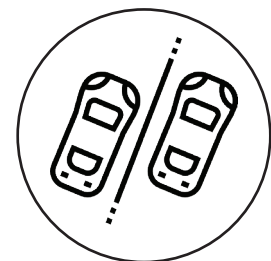
- Fully air conditioned space
- 28' Clear Height
- Dock High and Grade Level Doors
- 1200 Amps Power
- 1 Oversized Drive-in Door
- Building Signage Available



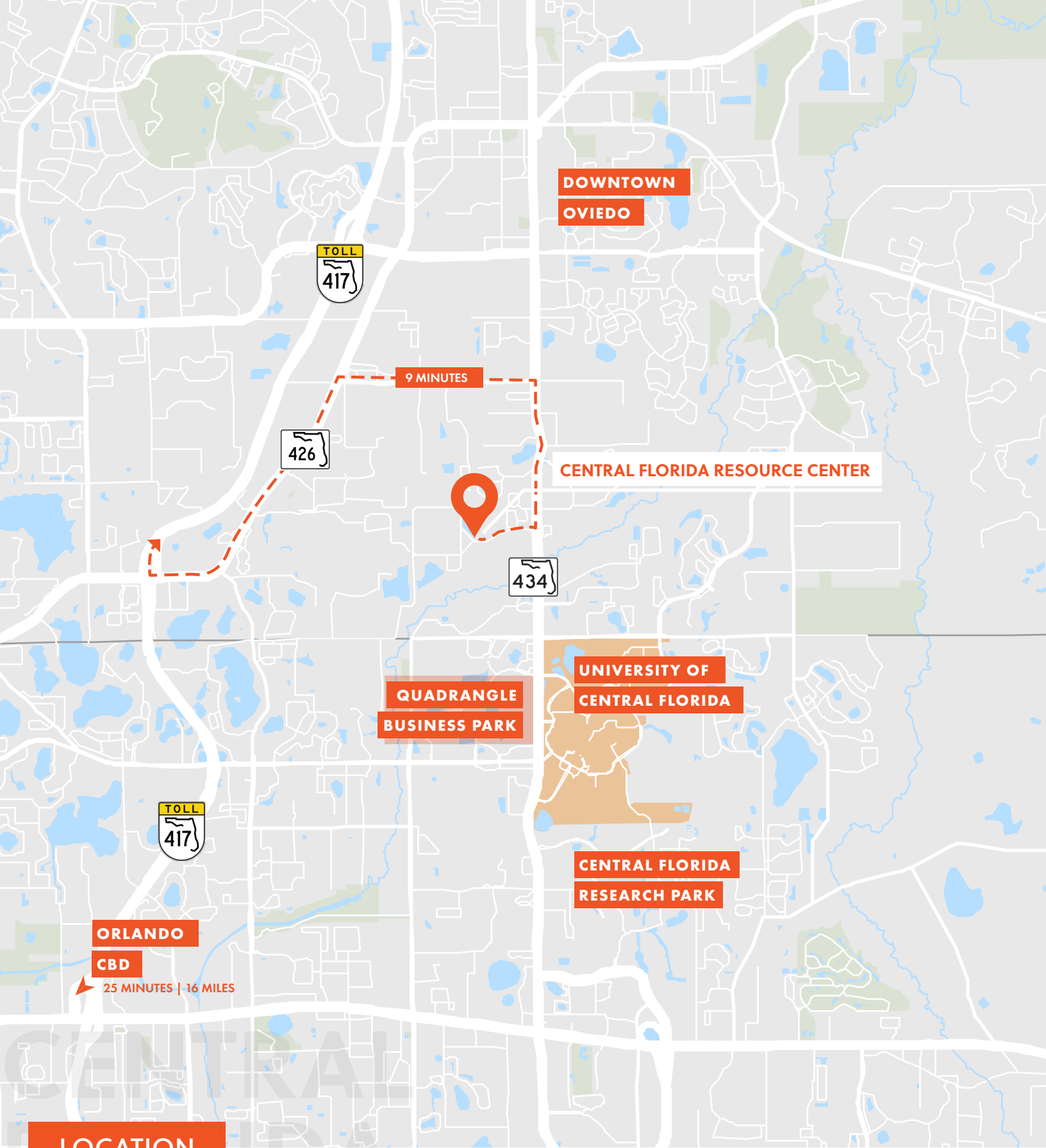
Dock High Doors



Near UCF and Orlando  
Research Park



Convenient & Safe Parking



**DOWNTOWN  
OVIEDO**

**TOLL  
417**

**9 MINUTES**

**426**

**CENTRAL FLORIDA RESOURCE CENTER**

**434**

**QUADRANGLE  
BUSINESS PARK**

**UNIVERSITY OF  
CENTRAL FLORIDA**

**CENTRAL FLORIDA  
RESEARCH PARK**

**ORLANDO  
CBD**

**25 MINUTES | 16 MILES**

**LOCATION**

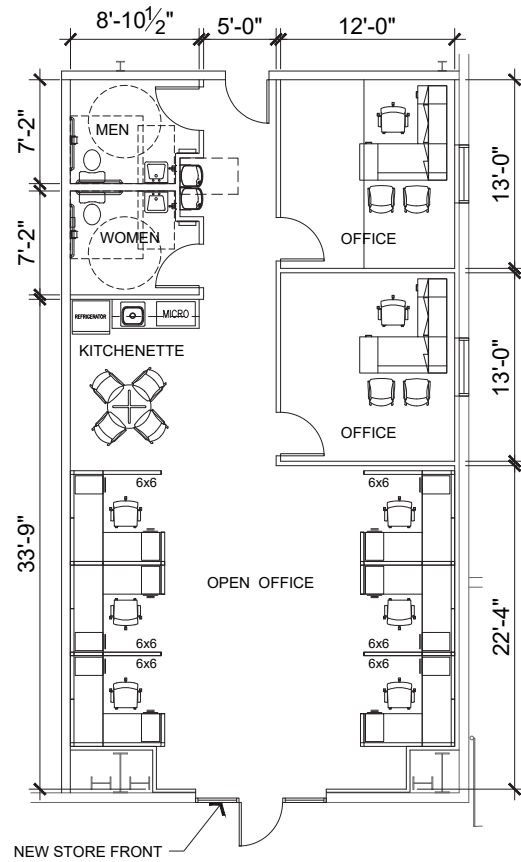
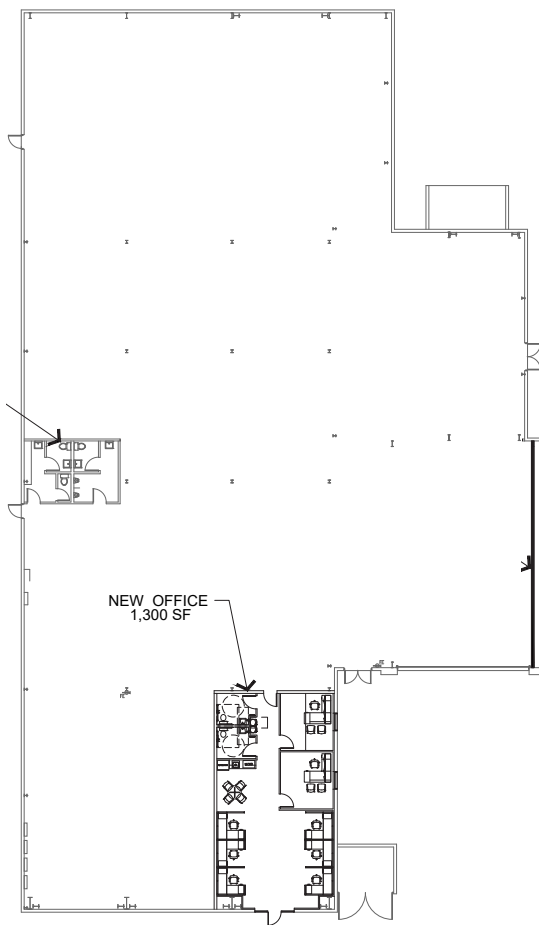
# CENTRAL FLORIDA RESOURCE CENTER

Tenants at Central Florida Resource Center enjoy close proximity to UCF, Central Florida Research Park, The Quadrangle Business Park, Downtown Oviedo, and SR-417, which are all located within 5 miles of the park.

# FLOOR PLAN

5712 Dot Com Ct - 20,091 SF Available

Approximately 1,300 SF of Office



# CENTRAL FLORIDA

PHOTOS



# CENTRAL FLORIDA RESOURCE CENTER

THANK YOU



FOR MORE INFORMATION, PLEASE CONTACT:

**JOHN PIETKIEWICZ | 407.540.2793**

[john.pietkiewicz@foundrycommercial.com](mailto:john.pietkiewicz@foundrycommercial.com)

Licensed Real Estate Broker