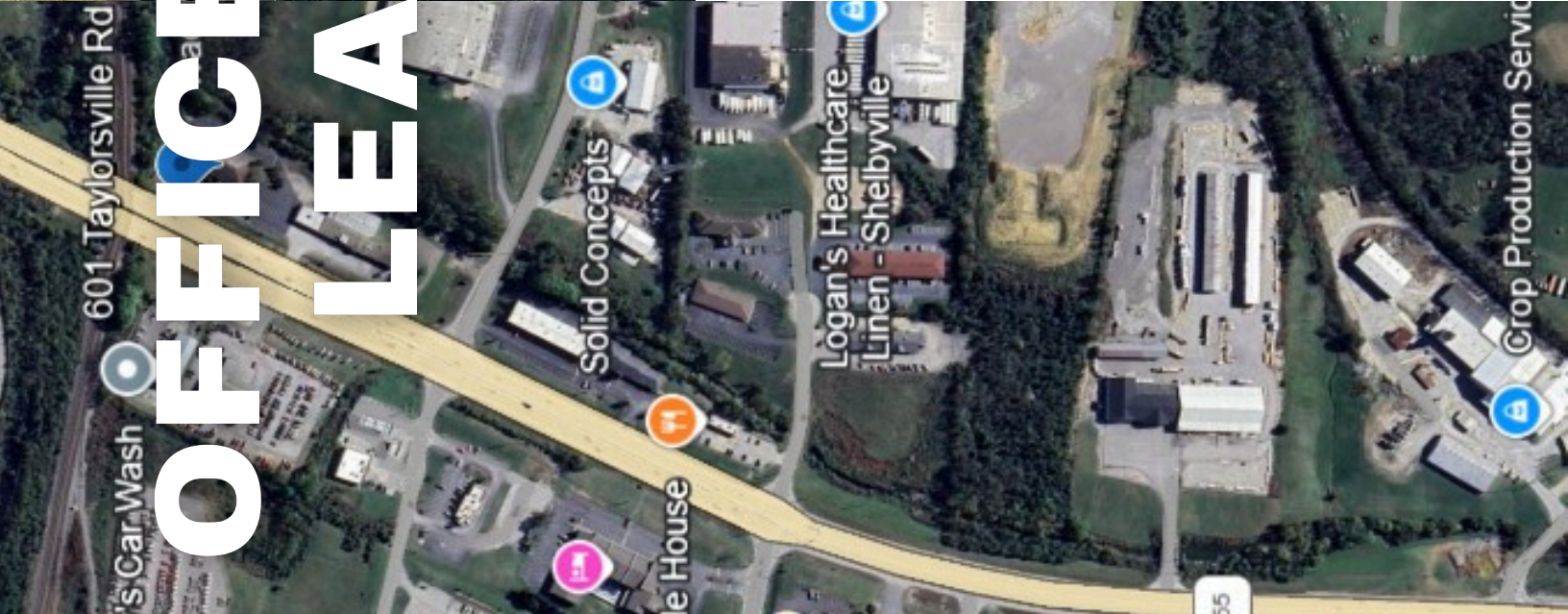
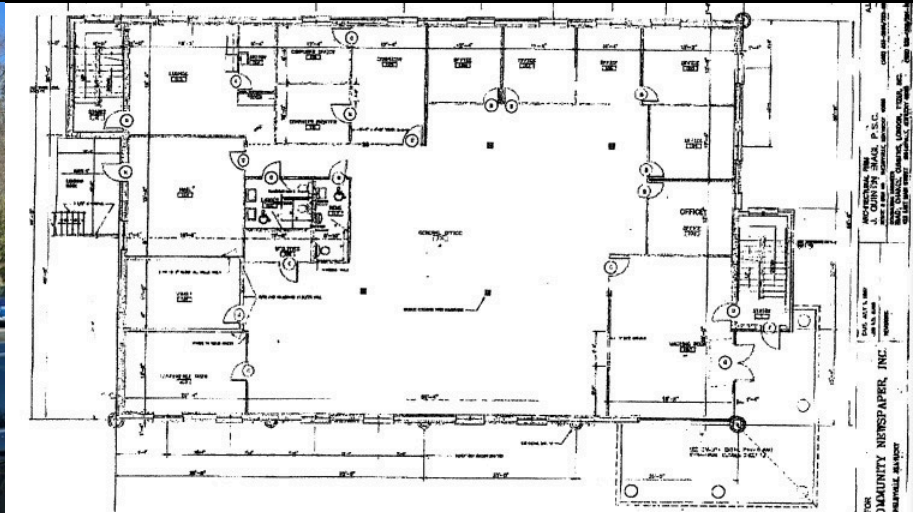


601 TAYLORSVILLE RD 1ST FLOOR SUITE



OFFICE FOR LEASE



Latonia Isenberg

502 797-7808

lisenberg@semonin.com | www.igotitsold.com

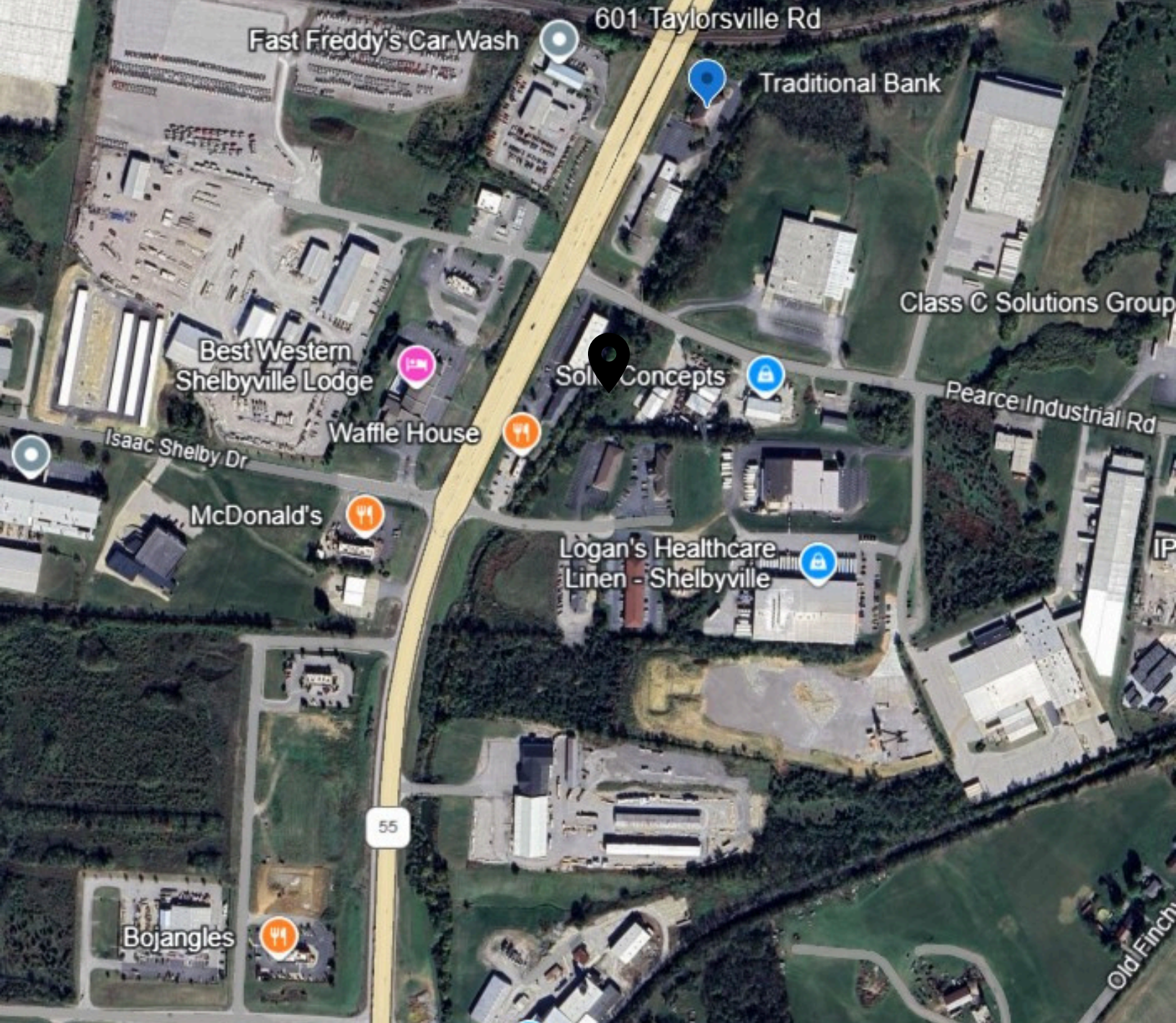
13906 Promenade Green Way Louisville, KY 40245



**SEMONIN
REALTORS®**

A Berkshire Hathaway Affiliate

**COMMERCIAL
DIVISION**



Available 6500 sf

SITE BENEFITS

- Easy access to I-64 interchange
- Great signage and visibility
- Ample Free Parking on-site
- Wet Sprinkler System
- Shared 800 AMP
- 6500 sf
- 120/208 Volts
- 3 Phase Electric
- Banks, restaurants, hotels and other amenities within close proximity
- Rapidly Growing Shelbyville, Between Louisville and Lexington



Latonia Isenberg

502 797-7808

lisenberg@semonin.com | www.igotitsold.com

13906 Promenade Green Way Louisville, KY 40245



**SEMONIN
REALTORS®**

A Berkshire Hathaway Affiliate

**COMMERCIAL
DIVISION**