

For Sale

~~List Price \$1,200,000~~

2389 Air Park Rd, Rhinelander

Rhinelander Industrial Park

Seller NEEDS
Offer with FAST
CLOSE
Price Reduced
to
\$999,900



2389 Air Park Rd PROPERTY HIGHLIGHTS

12, 496 Square Feet Warehouse Space
PLUS

4,221 Square Feet Office Space
Zoned General Industrial

3 Bathrooms

3.636 Acres

Warehouse has 17 foot ceilings

Five dock doors

One 12-foot Overhead Door

20+ parking spaces

Insulated and Heated

Fire Suspension with sprinklers

***Offering 3.0% Co-broke**



CONTACT US

PETE TENDERHOLT

715-360-0003

PTENDERHOLT@HOTMAIL.COM

DEB MANN

715-499-4470

DMANN@SHOREWEST.COM



NRS
NORTHWOODS
REAL ESTATE SPECIALISTS

ShoreWEST
REALTORS

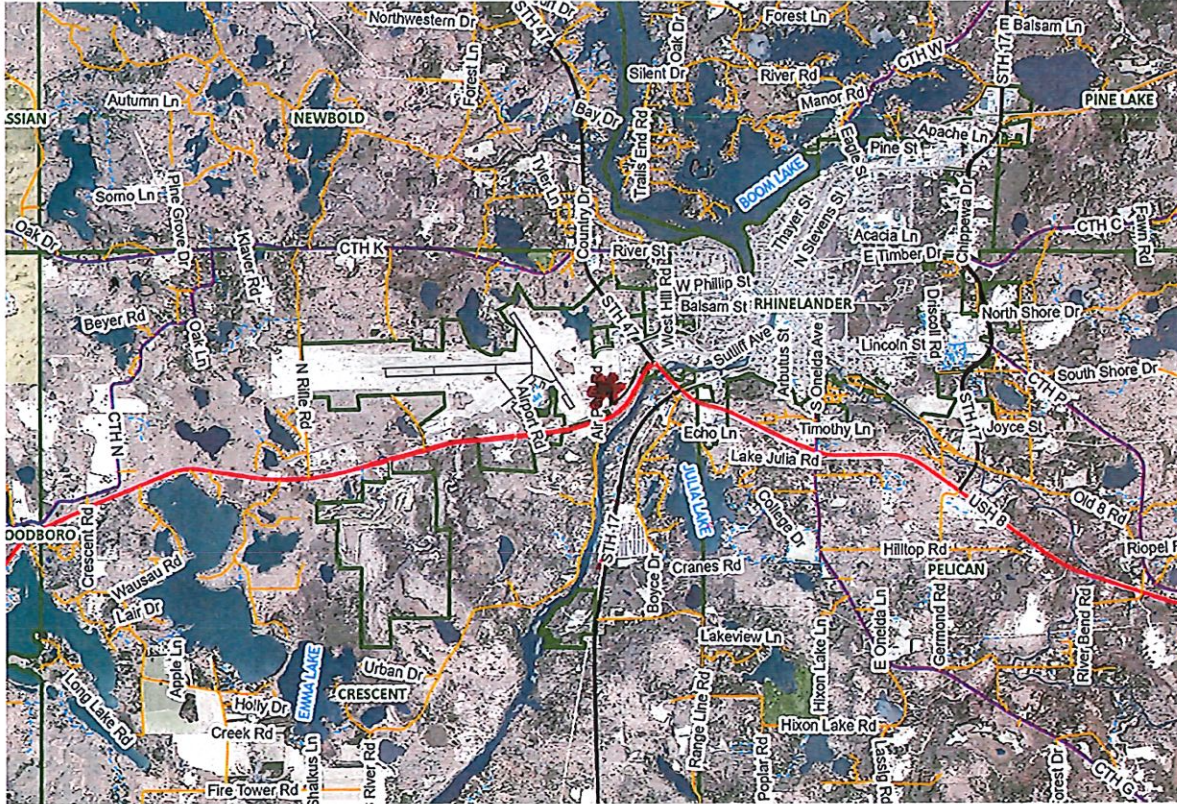
2389 Air Park Rd, Rhinelander, WI

Rhinelander Industrial Park



PROPERTY MAP

Rhinelander, WI



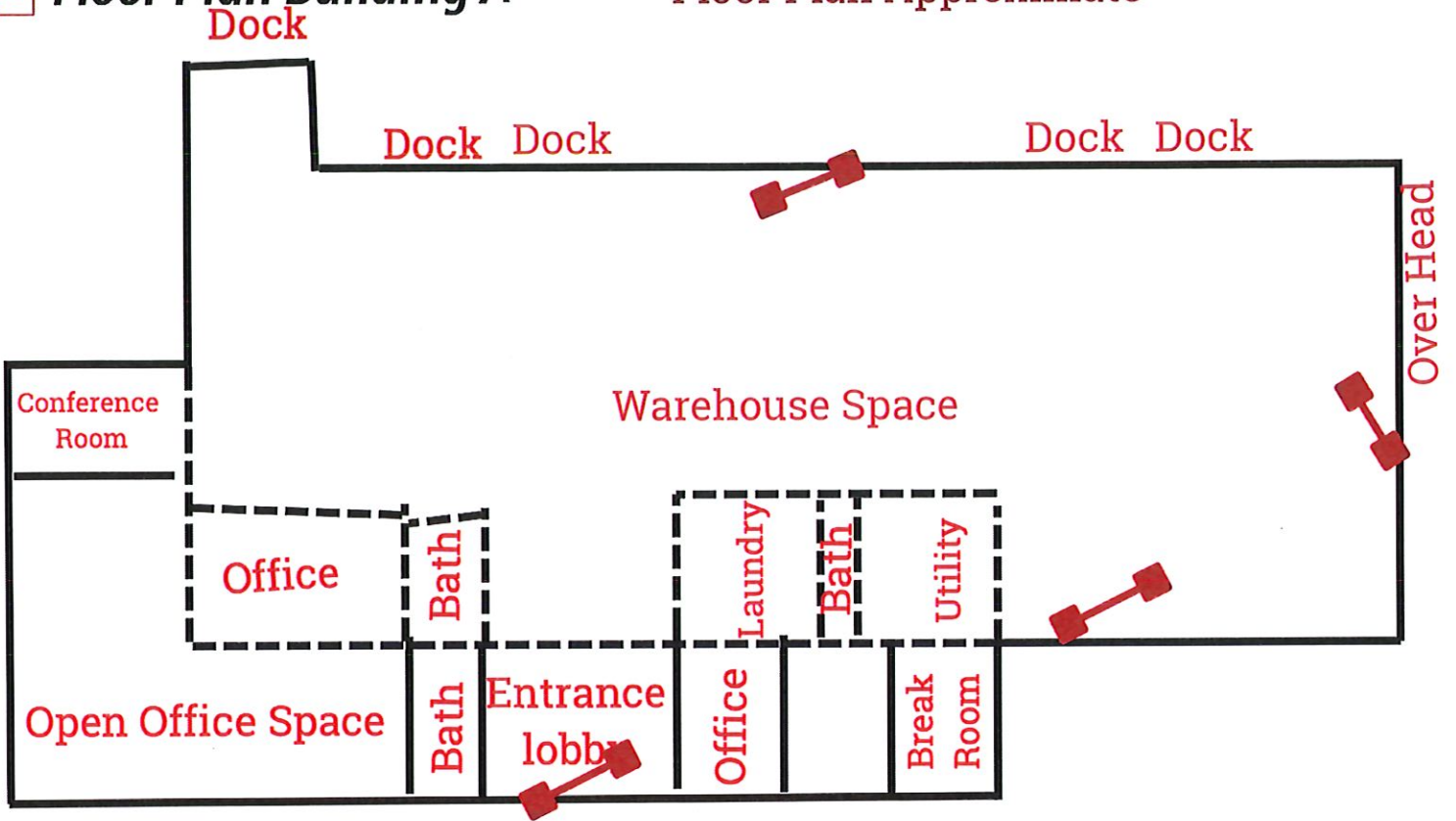
2389 Air Park Rd, Rhinelander, WI

Rhinelander Industrial Park



Floor Plan Building A

**Floor Plan Approximate



2389 Air Park Rd, Rhinelander, WI

Rhinelander Industrial Park



Oneida County

Population

Rhinelander Population: 8,185

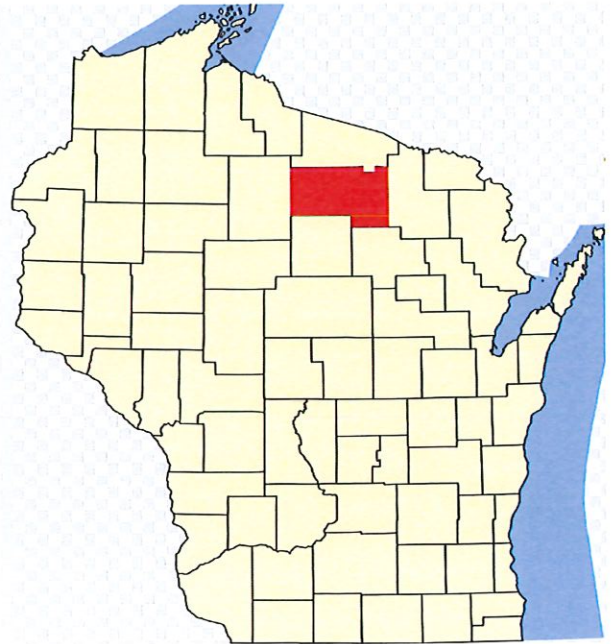
Oneida County Population: 37,845

Median Family Income:

\$69,621

Prominent Industries in the Region:

- Healthcare & Social Assistance
- Retail Trade
- Manufacturing
- Agriculture/Forestry/Fishing/Hunting
- Educational Services
- Mining/Quarrying/Oil/Gas Extraction
- Nicolet College



Web links:

<https://www.ocedc.org>

<https://business.rhinelanderchamber.com>

<https://explorerhinelander.com/>

<https://www.co.oneida.wi.us>

<https://oneidacountywi.com/>

This information has been obtained from sources believed reliable. We have not verified it and make no guarantee, warranty, or representation about it. Any projections, opinions, assumptions, or estimates used are for example only and do not represent the current or future performance of the property. You and your advisors should conduct a careful, independent investigation of the property to determine to your satisfaction the suitability of the property for your needs. Photos herein are the property of their respective owners and use of these images without the express written consent of the owner is prohibited.