



MIDDLE SQUARE PROFESSIONAL BUILDING

134 W Middle St

Chelsea, Michigan 48118

THE PROPERTY

Professional, well-maintained downtown Chelsea office with polished interiors and a quiet setting near dining, shops, and public parking. A strong fit for small businesses and practitioners.

AT A GLANCE

BUILDING TYPE Office multi-tenant	BUILDING SIZE 14,400 SF	ZONING DT downtown
AVAILABLE 506-1,097 SF	RATE RANGE \$23.12-23.25 PSF G	PARKING Public nearby

AVAILABLE SUITES

SUITE	SIZE	RATE
134-H	1,097 SF	\$23.25 PSF G
134-I	506 SF	\$23.12 PSF G



**WALKABLE
DOWNTOWN**



PUBLIC PARKING

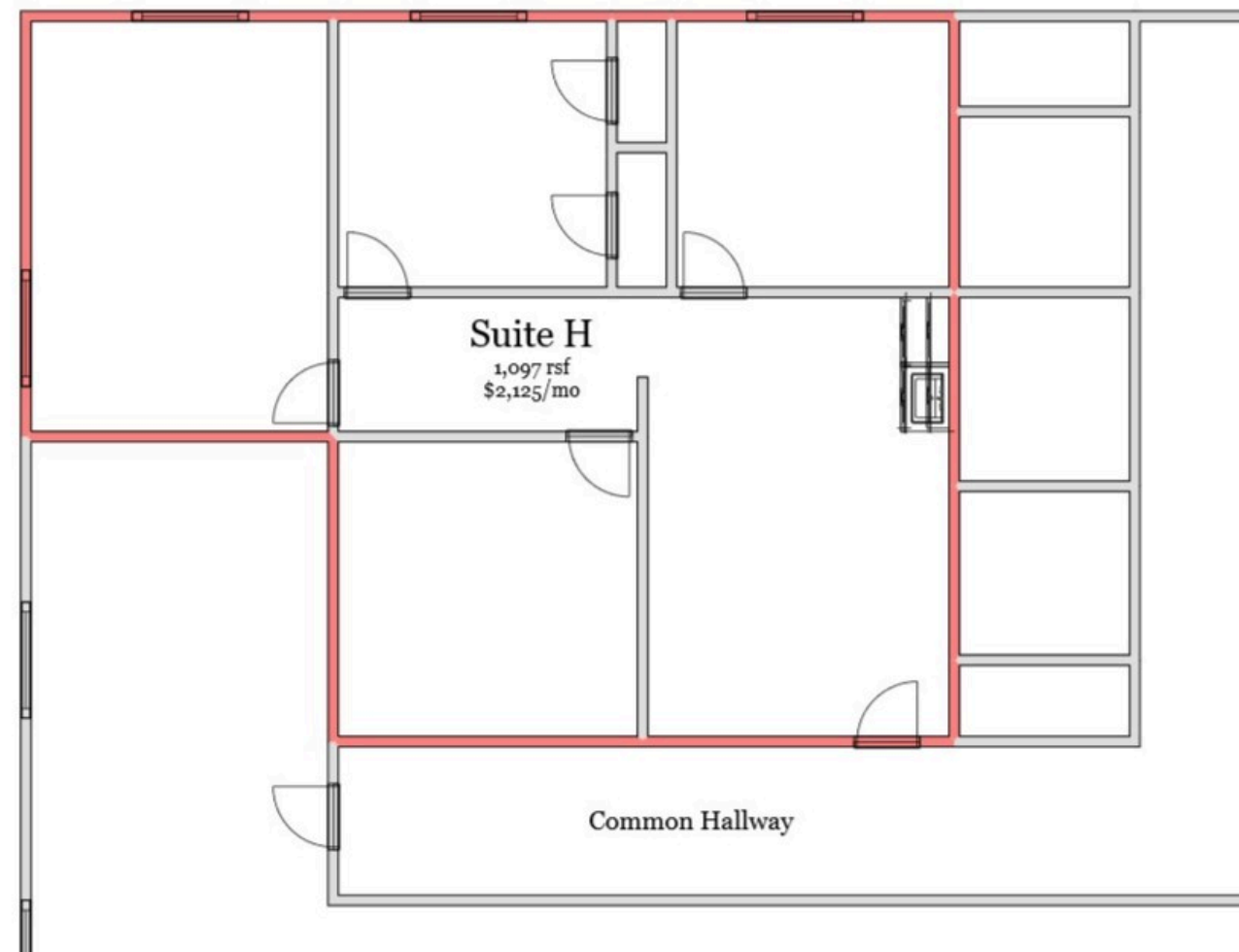


MOVE-IN READY

H SUITE

134 W Middle Street · Downtown Chelsea

SIZE	RATE	MONTHLY
1,097 SF	\$23.25 PSF G	\$2,125 /mo



FLOOR PLAN · NOT TO SCALE

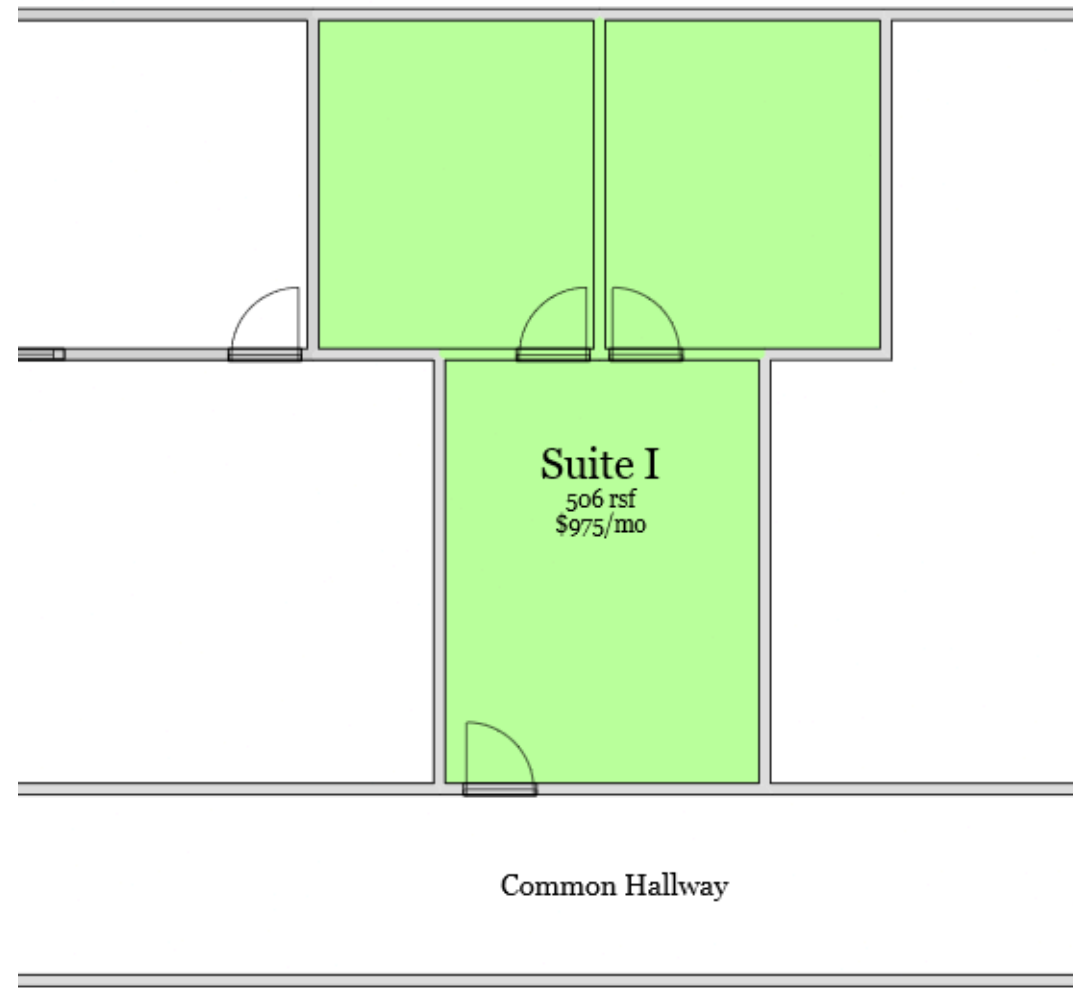




SUITE

134 W Middle Street · Downtown Chelsea

SIZE	RATE	MONTHLY
506 SF	\$23.12 PSF G	\$975 /mo



FLOOR PLAN · NOT TO SCALE





FOR LEASING INQUIRIES

Tyler Burgoon

Broker · Operations Director

GET IN TOUCH

Let's find the right space for your business.

EMAIL tyler@jpcommercialre.com

OFFICE 734 994 8800

CELL 734 730 5633

OFFICE 500 S Main Street
Ann Arbor, MI 48104

WEB jpcommercialre.com

NEXT STEPS

Tours can typically be scheduled within 48 hours. Call or email to set a time, request additional materials, or ask about lease terms.

JP Commercial Real Estate (JPCRE) does not make any representations or warranties, express or implied, as to the accuracy or completeness of the information contained herein, and nothing contained herein is or shall be relied upon as a promise or representation as to the future representation of the property. This may include certain statements and estimates with respect to the property. JPCRE disclaims any and all liability for representations or warranties, expressed or implied, contained in or omitted information. The information contained herein is subject to change without notice and the recipient of these materials shall not look to JPCRE or the JPCRE advisor nor any of their officers, employees, representatives, independent contractors or affiliates, for the accuracy or completeness thereof.