

Pawleys Island warehouse space for lease



±5,787 SF AVAILABLE

312 Commerce Drive | Pawley's Island, SC 29585

Tyler Smith
Vice President
+1 704 497 1533
tyler.smith@avisonyoung.com

**AVISON
YOUNG**

Property overview

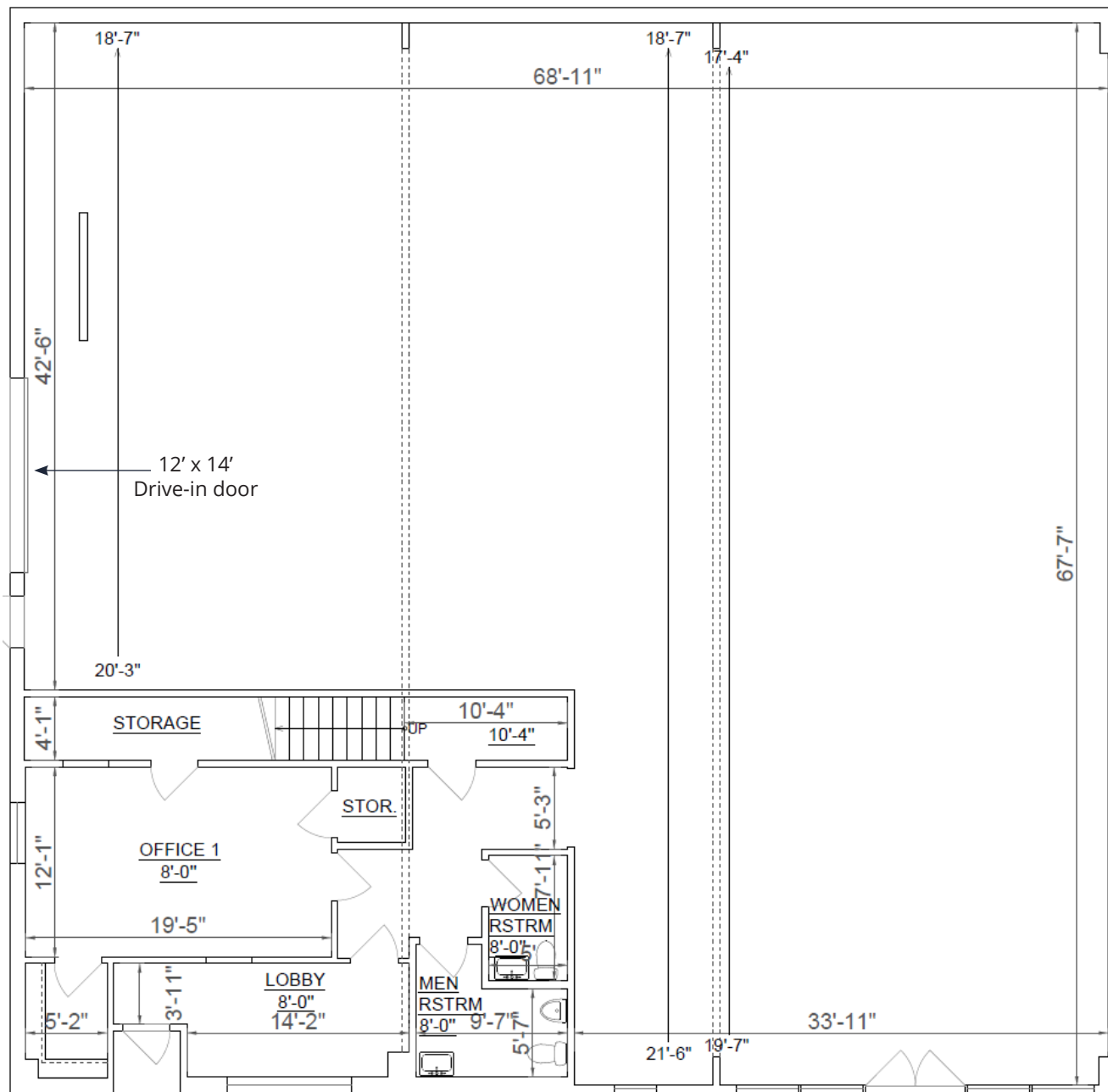
Available suite	Suite A
Date available	January 2027
Suite size	±5,787 sf
Warehouse	±4,000 sf
Office	±1,787 sf
Loading	12'x14' drive-in door
HVAC	Warehouse and office
Clear height	Up to 21'6"
Power	300 amps 120/208V 3 phase
Signage	Monument and building signage

RECENT SITE IMPROVEMENTS

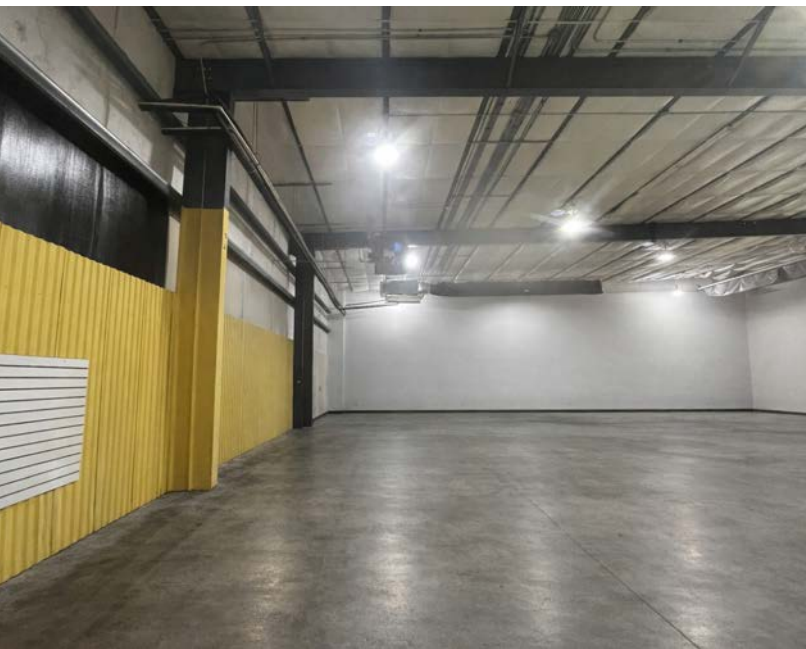
- New exterior paint
- Newly resealed/restriped parking lot
- Updated landscaping package
- New storefront/awnings
- New signage



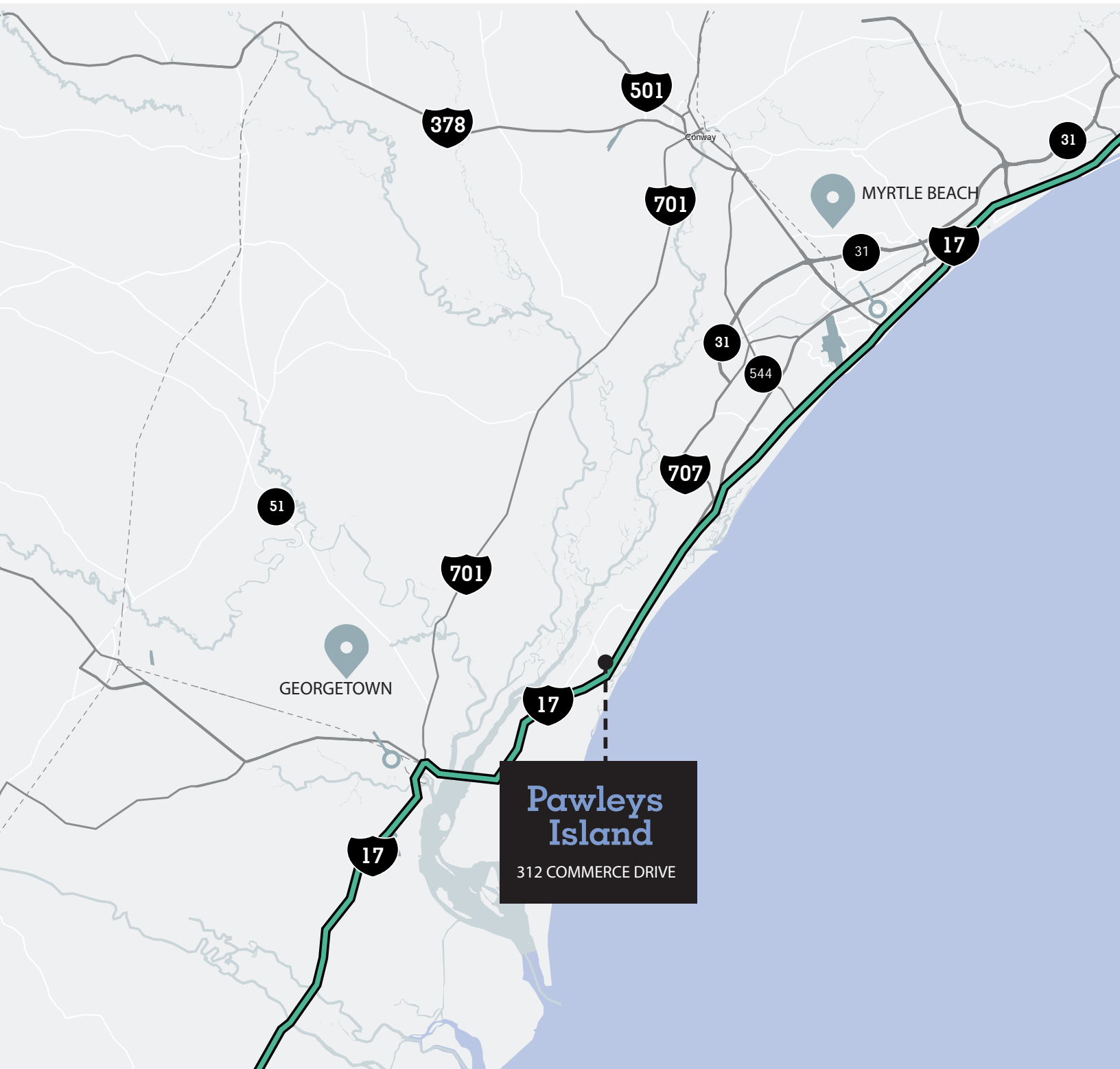
Floorplan - Suite A



Photos



Location



312 Commerce Drive

An aerial photograph of a large industrial building with a grey metal roof and beige walls. The building has a large white roll-up door on the left side. To the right of the building is a paved parking lot with several cars parked, including a white pickup truck. A road runs along the right side of the building, with a silver car driving away from the camera. The area is surrounded by green grass and trees. The Avison Young logo is in the top left corner.

**AVISON
YOUNG**

For more information

Tyler Smith

Vice President

+1 704 497 1533

tyler.smith@avisonyoung.com

40 Calhoun Street, Suite 350 | Charleston, SC 29401 | 843 725 7200

© 2025. Avison Young. Information contained herein was obtained from sources deemed reliable and, while thought to be correct, have not been verified. Avison Young does not guarantee the accuracy or completeness of the information presented, nor assumes any responsibility or liability for any errors or omissions therein.