

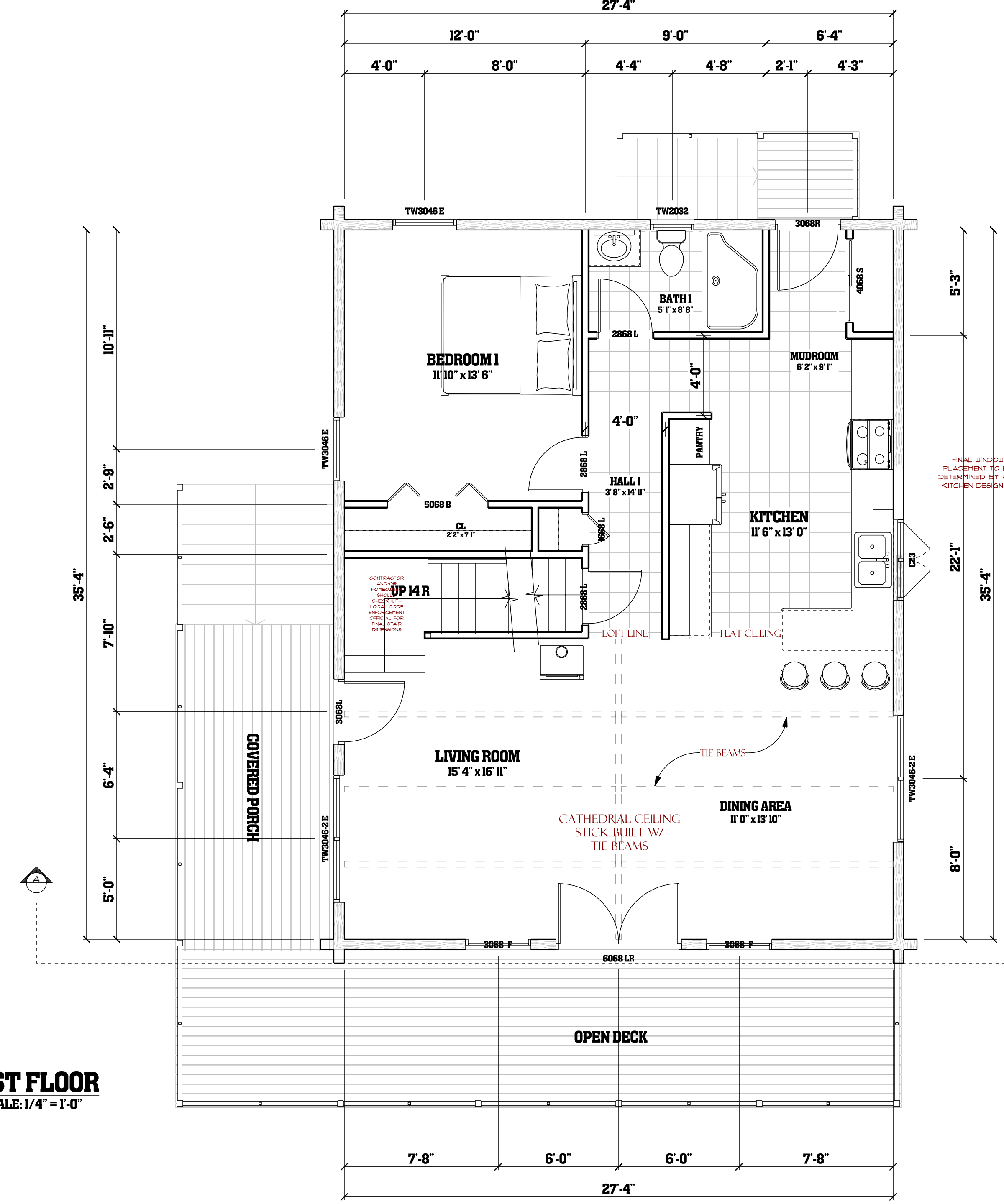
# PRELIMINARY DRAWING NOT FOR CONSTRUCTION

## DRAWING SCHEDULE

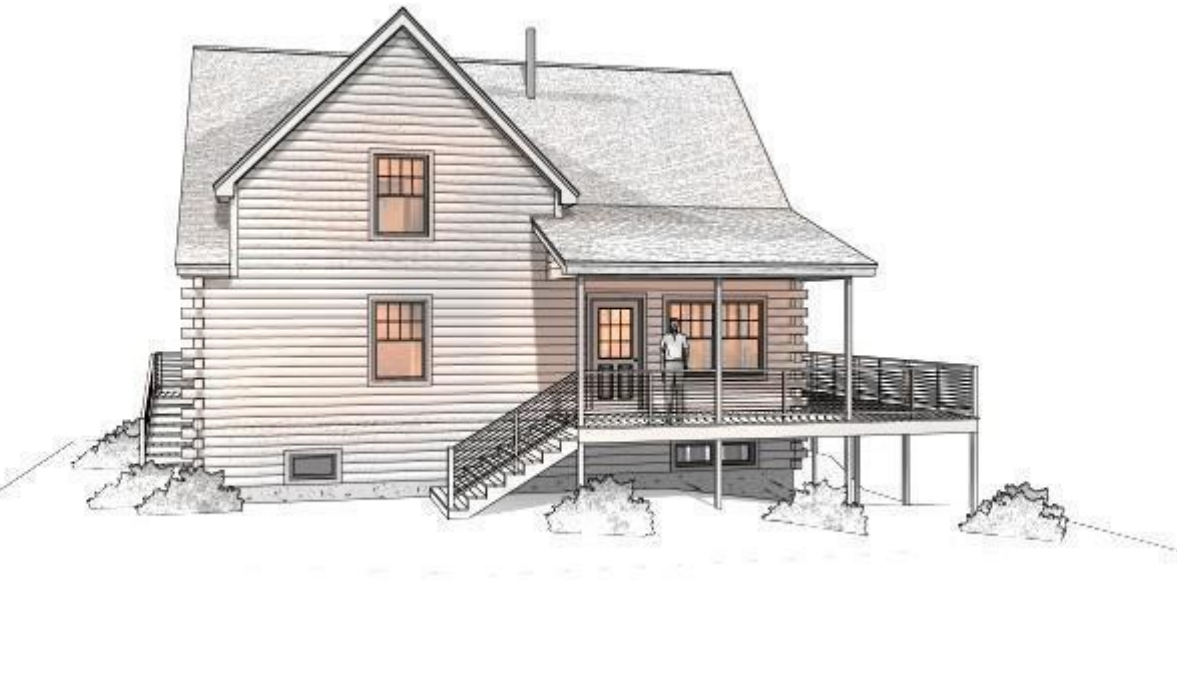
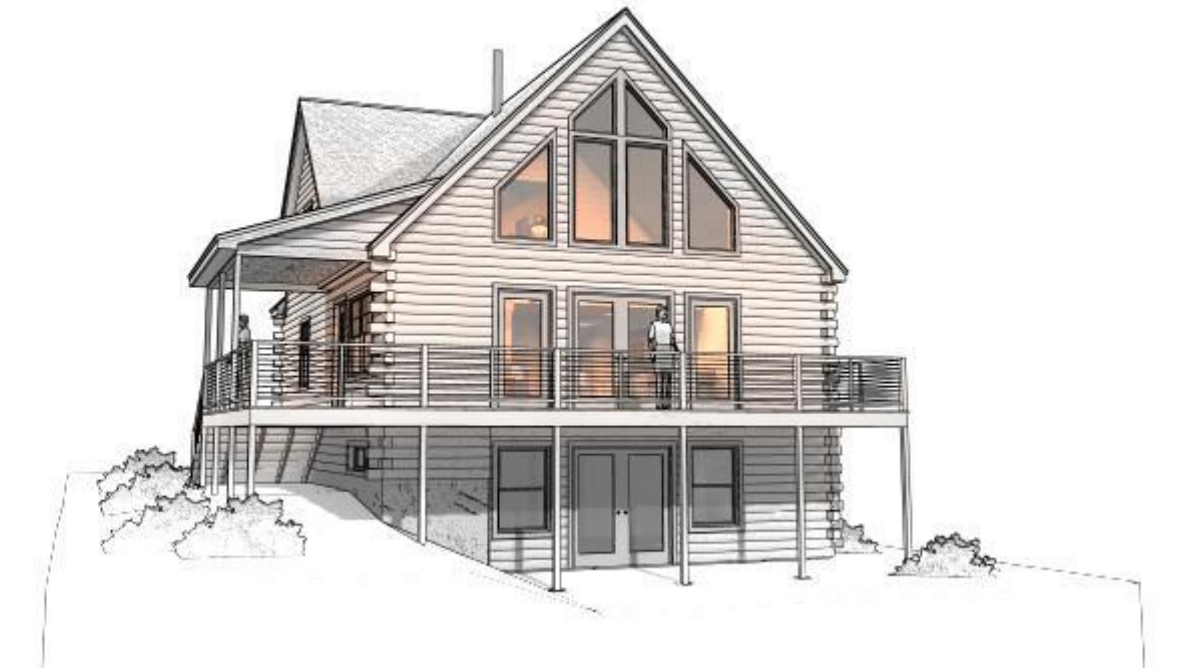
- 1ST FLOOR PLAN **1**
- ELEVATIONS **2**
- 2ND FLOOR & DAYLIGHT BASEMENT **3**
- ROOF VIEW **4**

## AREA SCHEDULE

| NAME                            | AREA           |
|---------------------------------|----------------|
| FOOTPRINT (USED FOR ESTIMATING) | 1032.1 SQ. FT. |
| 1ST FLOOR (FINISHED)            | 965.8 SQ. FT.  |
| 2ND FLOOR (FINISHED)            | 578.7 SQ. FT.  |
| BASEMENT (FINISHED)             | 812.1 SQ. FT.  |
| BASEMENT (UNFINISHED)           | 198.0 SQ. FT.  |
| WOOD DECKS & PORCHES            | 434.0 SQ. FT.  |



**1ST FLOOR**  
SCALE: 1/4" = 1'-0"



**\*\*ATTENTION HOMEOWNERS, BUILDERS, DESIGNERS & ARCHITECTS\*\***

- ALL WORK SHALL CONFORM TO STATE AND LOCAL BUILDING CODES
- THE BUILDING CODE IS THE MINIMUM REQUIREMENT. ALWAYS CONSULT WITH THE LOCAL AUTHORITIES FOR AMENDMENTS OR IMPROVEMENTS TO THE CODE
- ALL DIMENSIONS ARE TO BE VERIFIED IN THE FIELD
- ALL FOOTINGS ARE TO REST ON UNDISTURBED SOIL AND EXTEND BELOW THE FROST LINE
- ALL LUMBER EXPOSED TO THE WEATHER OR IN DIRECT CONTACT WITH CONCRETE MUST BE PRESSURE TREATED
- SMOKE ALARMS ARE TO BE HARDWIRED, INTERCONNECTED AND INSTALLED IN THE FOLLOWING LOCATIONS:
  - EACH SLEEPING AREA
  - OUTSIDE EACH SEPERATE SLEEPING AREA IN THE VICINITY OF THE BEDROOMS
  - ON EACH ADDITIONAL STORY INCLUDING BASEMENT AND HABITABLE ATTICS
  - NOT LESS THAN 3' HORIZONTALLY FROM A BATHROOM DOOR CONTAINING A SHOWER OR A BATHTUB
- A GARAGE CEILING WITH HABITABLE SPACE ABOVE MUST BE PROTECTED WITH 5/8" TYPE X GYPSUM
- COMMON WALL BETWEEN HOUSE AND GARAGE MUST HAVE NO LESS THAN 1/2" GYPSUM ON THE GARAGE SIDE
- OPENINGS BETWEEN THE RESIDENCE AND GARAGE SHALL BE PROTECTED WITH A 20 MIN. FIRE RATE DOOR EQUIPPED WITH A SELF-CLOSING DEVICE.
- GARAGE SLAB MUST BE AN APPROVED NON-COMBUSTIBLE MATERIAL AND BE SLOPED TO FACILITATE THE MOVEMENT OF LIQUIDS TO A FLOOR DRAIN OR THE MAIN VEHICLE ENTRY DOOR
- MAX SILL HEIGHT FOR EGRESS WINDOWS IS 44"
- FOR EGRESS, TEMPERED GLASS, SASH LIMITER OR WOOD (WINDOW OPENING CONTROL DEVICE) PLEASE REFER TO 2015 IRC
- REFER TO IRC TABLE R602.3(1) FOR FASTENING SCHEDULE
- REFER TO IRC R602.7(2) FOR INTERIOR GIRDER SPANS

## OPENING SCHEDULE

| LIBRARY NAME   | PRODUCT CODE   | COUNT |
|--|----------------|-------|
| SPINDOOR.S/INTERIOR/HINGED                               | 1068 L         | 1     |
| SPINDOOR.S/INTERIOR/HINGED                               | 1668 L         | 2     |
| SPINDOOR.S/INTERIOR/HINGED                               | 2668 R         | 1     |
| SPINDOOR.S/INTERIOR/HINGED                               | 2868 L         | 8     |
| SPINDOOR.S/INTERIOR/HINGED                               | 2868 R         | 1     |
| SPINDOOR.S/EXTERIOR/HINGEDXGLASS                         | 3068_F         | 2     |
| SPINDOOR.S/EXTERIOR/HINGEDX9 LITE                        | 3068L          | 1     |
| SPINDOOR.S/EXTERIOR/HINGEDX9 LITE                        | 3068R          | 1     |
| SPINDOOR.S/INTERIOR/SLIDER                               | 4068 S         | 1     |
| SPINDOOR.S/INTERIOR/BIFOLD                               | 5068 B         | 3     |
| SPINDOOR.S/EXTERIOR/HINGEDXGLASS                         | 6068 LR        | 2     |
| SPWINDOWSANDERSEN400 SERIESAWNING                        | AR281          | 3     |
| SPWINDOWSANDERSEN400 SERIESAWNING                        | AR2281         | 1     |
| SPWINDOWSANDERSEN400 SERIESCASEMENT                      | C23            | 1     |
| SPWINDOWSANDERSEN400 SERIESCUSTOM2022SULLIVAN            | CUSTOM FIXED 1 | 2     |
| SPWINDOWSANDERSEN400 SERIESCUSTOM2022SULLIVAN            | CUSTOM FIXED 2 | 2     |
| SPWINDOWSANDERSEN400 SERIESCUSTOM2022SULLIVAN            | CUSTOM FIXED 3 | 2     |
| SPWINDOWSANDERSEN400 SERIESSTILT-WASH DOUBLE HUNGJ WIDE  | TW2032         | 2     |
| SPWINDOWSANDERSEN400 SERIESSTILT-WASH DOUBLE HUNGJ WIDE  | TW3046 E       | 6     |
| SPWINDOWSANDERSEN400 SERIESSTILT-WASH DOUBLE HUNGQ2 WIDE | TW3046-2 E     | 3     |
| SPINDOOR.S/INTERIOR/BIFOLD                               | 6068 B         | 1     |

**21 LOCATIONS ACROSS MAINE**  
 Auburn • Bangor • Bar Harbor • Belfast • Belgrade • Blue Hill • Boothbay Harbor  
 Brunswick • Bucksport • Calais • Camden • Cherryfield • Damariscotta • Ellsworth  
 Fairfield • Farmington • Greenville • Machias • Portland • Rockland • Skowhegan  
**WWW.HAMMONDLUMBER.COM**

**Hammond Lumber Company**

DRAWINGS ARE PROVIDED BY HAMMOND LUMBER COMPANY AS A SERVICE TO ITS CUSTOMERS AND ARE INTENDED FOR INFORMATIONAL AND ILLUSTRATIVE PURPOSES ONLY. THE INFORMATION PRESENTED IN THESE DRAWINGS WAS NOT PREPARED OR REVIEWED BY A REGISTERED ARCHITECT AND SHOULD NOT BE USED AS A BASIS FOR CONSTRUCTION. HAMMOND LUMBER COMPANY SUGGESTS THAT ITS CUSTOMERS SEEK THE ADVICE OF A REGISTERED ARCHITECT BEFORE OBTAINING PERMITS OR COMMENCING CONSTRUCTION. HAMMOND LUMBER COMPANY DISCLAIMS ANY RESPONSIBILITY IF THEY ARE SO USED.

**MIKE SULLIVAN**

**SULLIVAN RESIDENCE**

**28 X 36 CHALET**  
**BATH, ME**

**Maine Pine LOG HOMES**  
 by Hammond Lumber Company  
 VISIT OUR WEBSITE:  
 WWW.MAINEPINELOGHOMES.COM  
 All that's missing is you...

LH220886  
1 OF 4

05/18/23  
06/06/23  
06/11/23

MEM SFB REL  
Saturday, August 20, 2022

SCALE = AS NOTED

**PRELIMINARY DRAWING  
NOT FOR CONSTRUCTION**



**FRONT ELEVATION**  
SCALE: 1/4" = 1'-0"



**RIGHT ELEVATION**  
SCALE: 1/4" = 1'-0"



**LEFT ELEVATION**  
SCALE: 1/4" = 1'-0"



**REAR ELEVATION**  
SCALE: 1/4" = 1'-0"

**Hammond Lumber Company**  
21 LOCATIONS ACROSS MAINE  
Auburn • Bangor • Bar Harbor • Belfast • Belgrade • Blue Hill • Boothbay Harbor  
Brunswick • Bucksport • Calais • Camden • Cherryfield • Damariscotta • Ellsworth  
Fairfield • Farmington • Greenville • Machias • Portland • Rockland • Skowhegan  
WWW.HAMMONDLUMBER.COM

DRAWINGS ARE PROVIDED BY HAMMOND LUMBER COMPANY AS A SERVICE TO ITS CUSTOMERS AND ARE INTENDED FOR INFORMATIONAL AND ILLUSTRATIVE PURPOSES ONLY. THE INFORMATION PRESENTED IN THESE DRAWINGS WAS NOT PREPARED OR REVIEWED BY A REGISTERED ARCHITECT AND SHOULD NOT BE USED AS A BASIS FOR CONSTRUCTION. HAMMOND LUMBER COMPANY SUGGESTS THAT ITS CUSTOMERS SEEK THE SERVICES OF A REGISTERED ARCHITECT OR ENGINEER TO OBTAIN TECHNICAL ADVICE AND TO OBTAIN NECESSARY PERMITS. HAMMOND LUMBER COMPANY ASSUMES NO RESPONSIBILITY IF THEY ARE SO USED.

**MIKE SULLIVAN**

**SULLIVAN RESIDENCE**

**28 X 36 CHALET**  
**BATH, ME**

**Maine Pine LOG HOMES**  
by Hammond Lumber Company

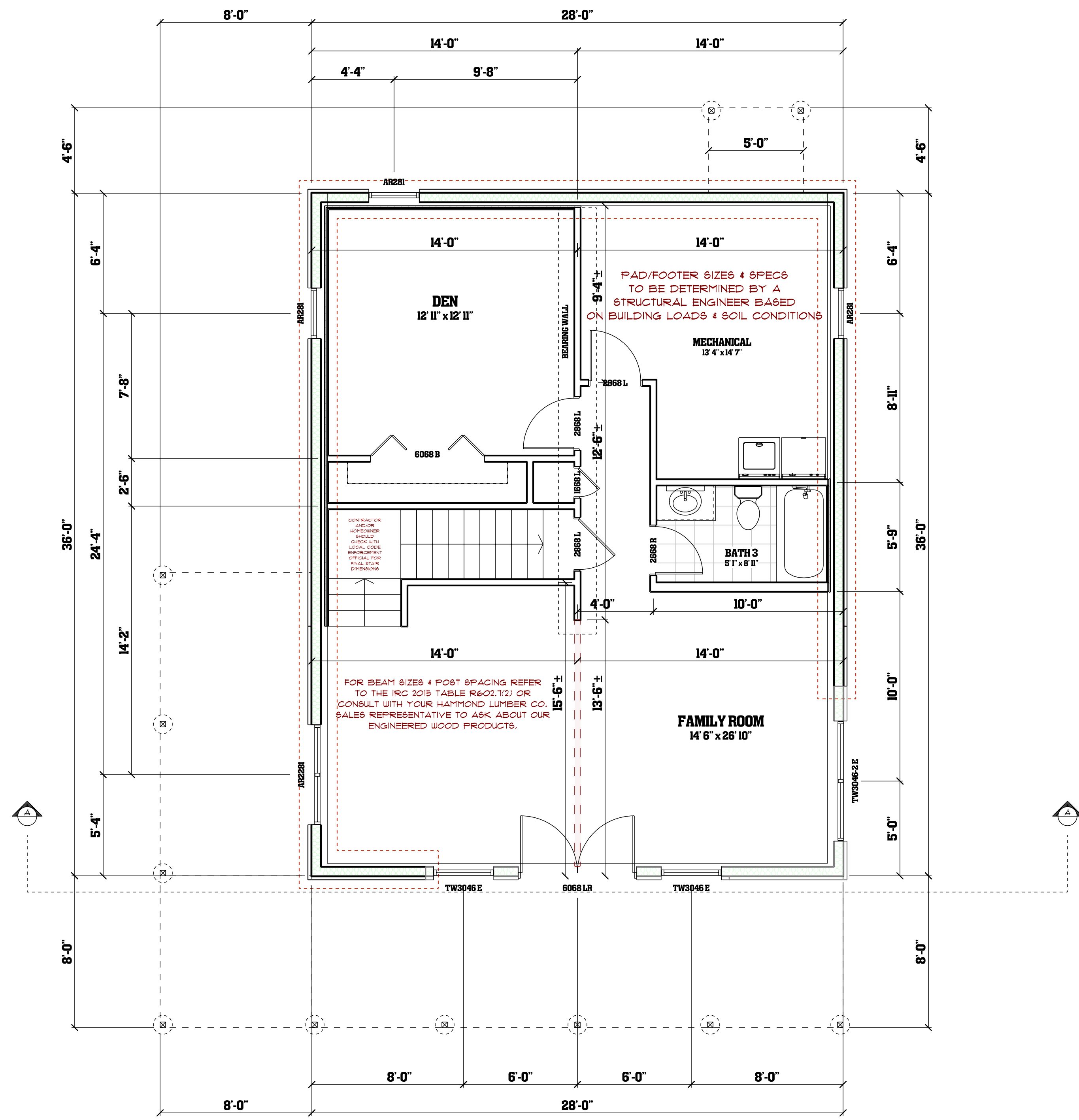
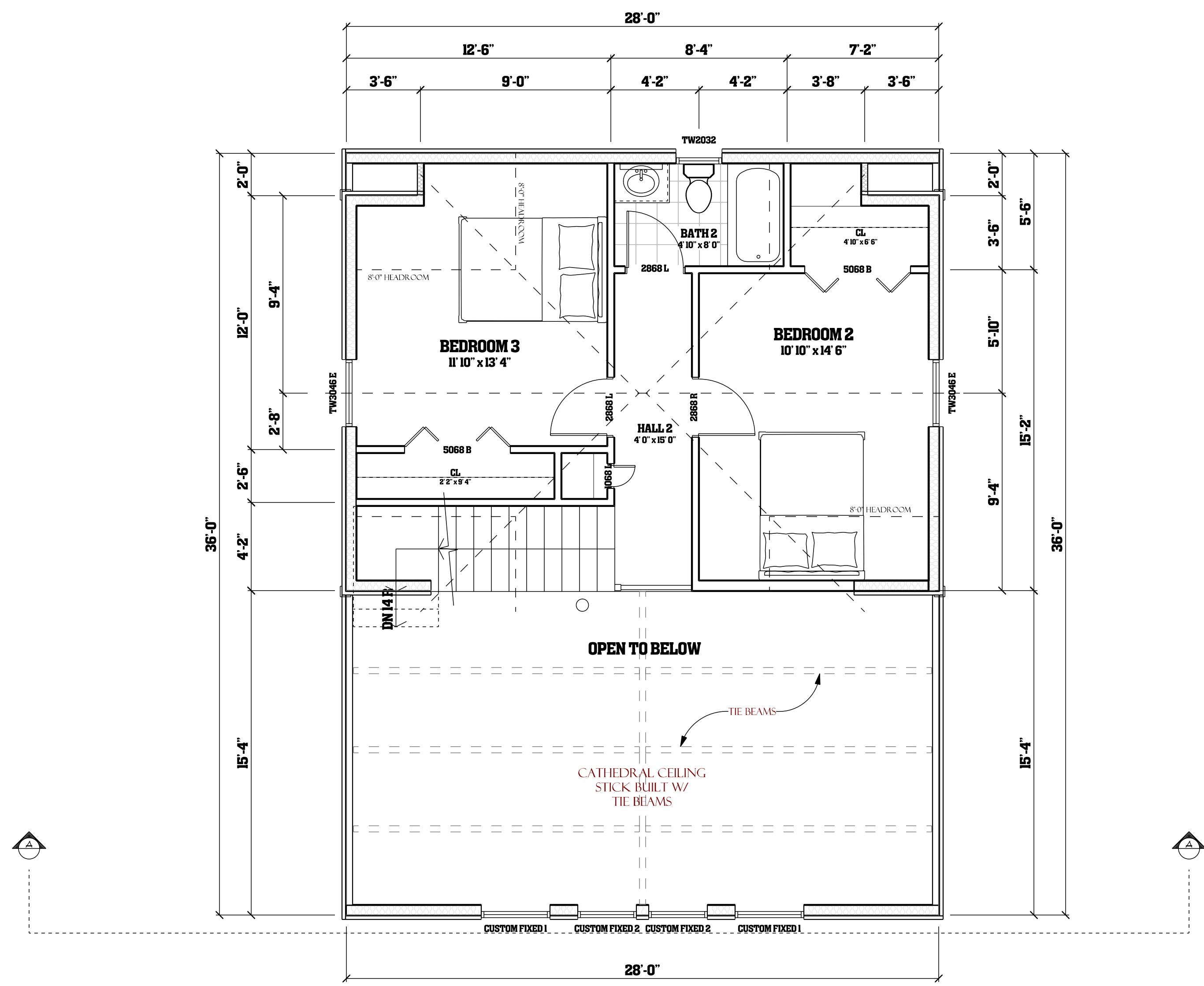
VISIT OUR WEBSITE:  
[WWW.MAINEPINELOGHOMES.COM](http://WWW.MAINEPINELOGHOMES.COM)  
All that's missing is you...

LH220886  
2 OF 4

05/18/23  
06/06/23  
06/11/23

REL  
SFB  
MRM  
Saturday, August 20, 2022  
SCALE = AS NOTED

**PRELIMINARY DRAWING  
NOT FOR CONSTRUCTION**



**Maine Pine LOG HOMES**  
by Hammond Lumber Company

VISIT OUR WEBSITE:  
[WWW.MAINEPINELOGHOMES.COM](http://WWW.MAINEPINELOGHOMES.COM)  
All that's missing is you...

**MIKE SULLIVAN**

|                           |                           |     |                  |          |          |
|---------------------------|---------------------------|-----|------------------|----------|----------|
| <b>SULLIVAN RESIDENCE</b> | MRM                       | SFB | REL              | 05/18/23 | 06/05/23 |
| <b>28 X 36 CHALET</b>     | Saturday, August 20, 2022 |     | SCALE - AS NOTED |          |          |
| <b>BATH, ME</b>           |                           |     |                  |          |          |

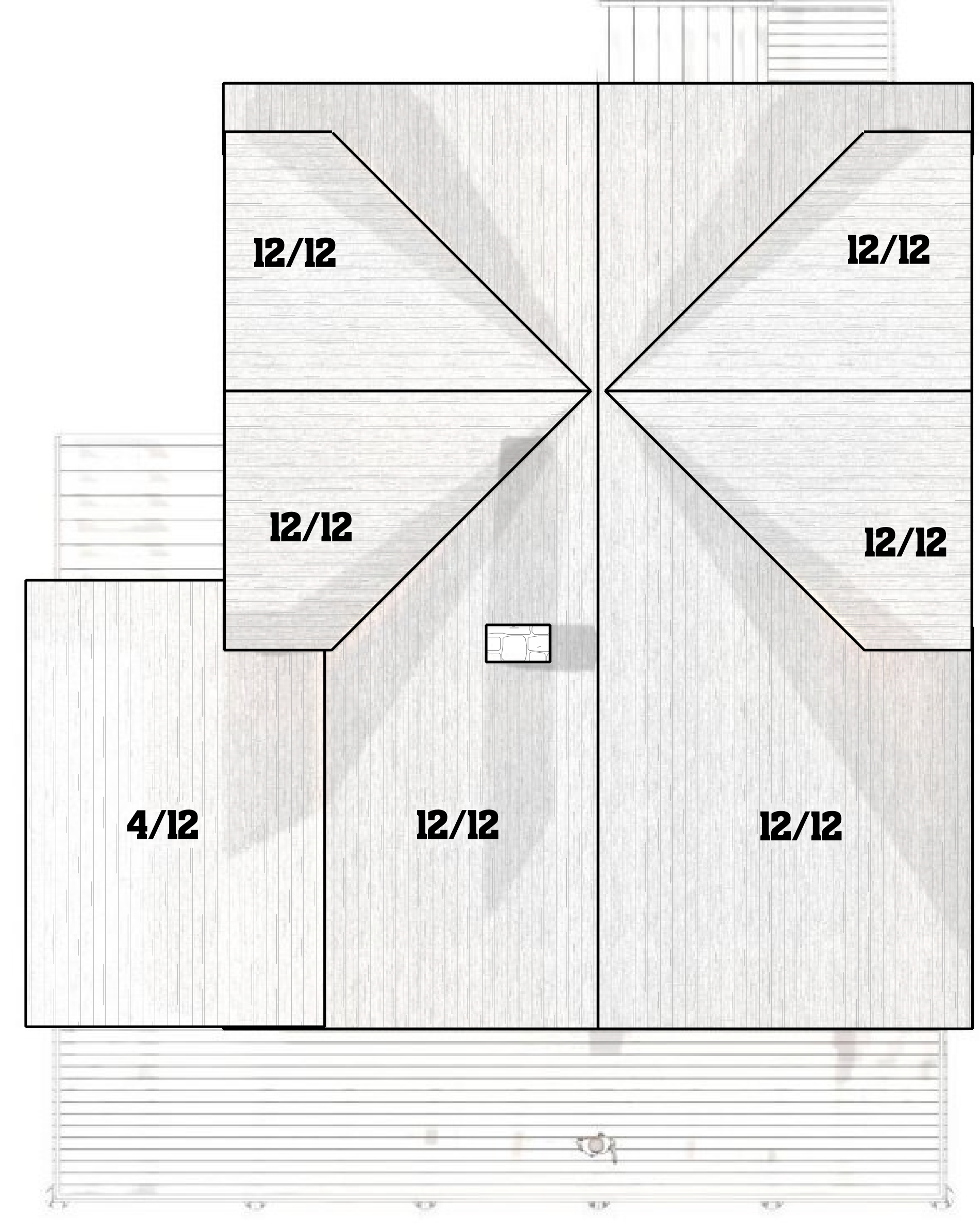
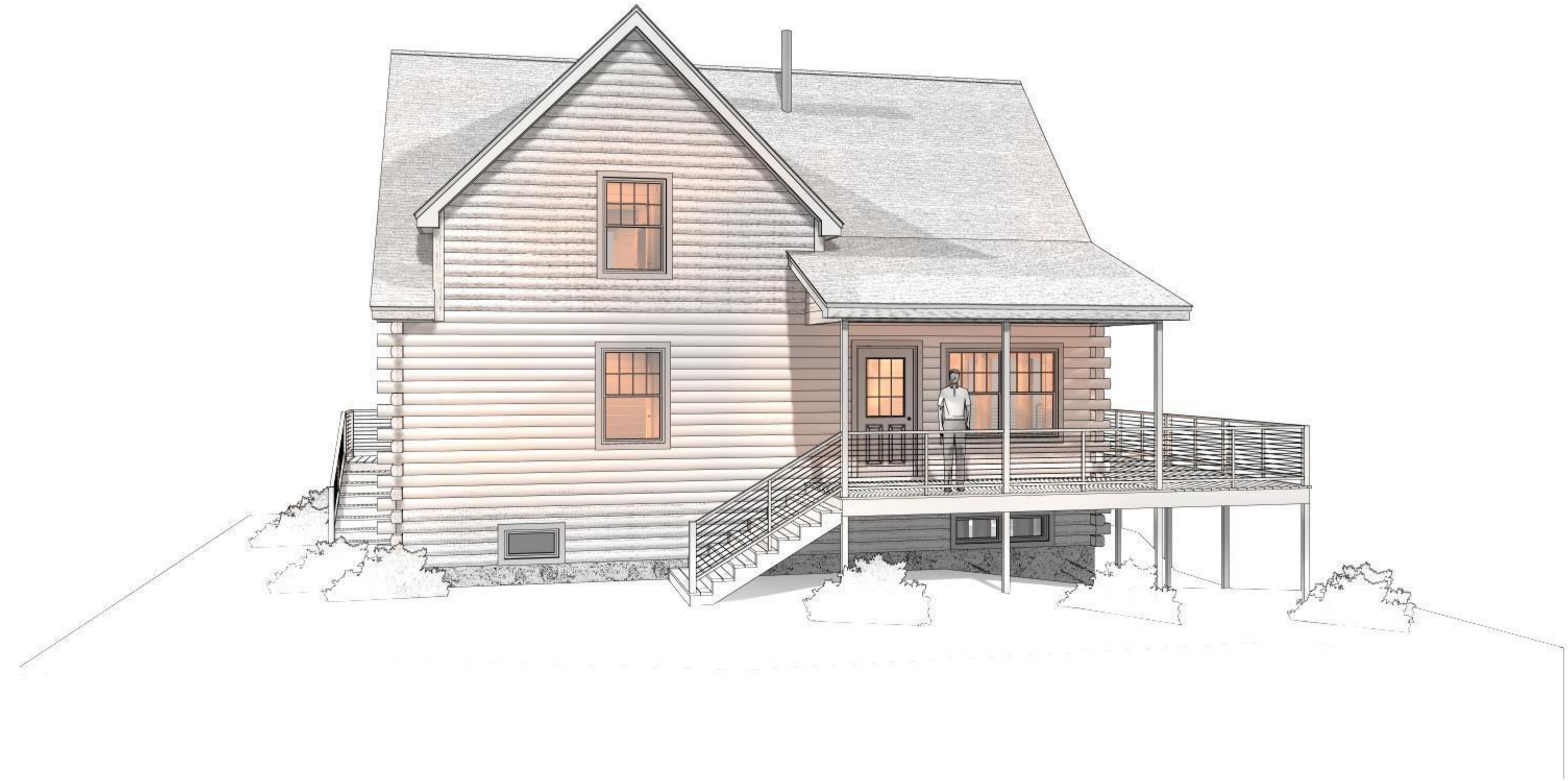
LH220886  
3 OF 4

**Hammond Lumber Company**

**21 LOCATIONS ACROSS MAINE**  
Auburn • Bangor • Bar Harbor • Belfast • Belgrade • Blue Hill • Boothbay Harbor • Brunswick • Bucksport • Calais • Camden • Cherryfield • Damariscotta • Ellsworth • Fairfield • Farmington • Greenville • Machias • Portland • Rockland • Skowhegan  
[WWW.HAMMONDLUMBER.COM](http://WWW.HAMMONDLUMBER.COM)

DRAWINGS ARE PROVIDED BY HAMMOND LUMBER COMPANY AS A SERVICE TO ITS CUSTOMERS AND ARE INTENDED FOR INFORMATIONAL AND ILLUSTRATIVE PURPOSES ONLY. THE INFORMATION PRESENTED IN THESE DRAWINGS WAS NOT PREPARED OR REVIEWED BY A REGISTERED ARCHITECT AND SHOULD NOT BE USED AS A BASIS FOR CONSTRUCTION. HAMMOND LUMBER COMPANY SUGGESTS THAT ITS CUSTOMERS SEEK THE SERVICES OF A REGISTERED ARCHITECT OR ENGINEER TO OBTAIN TECHNICAL ADVICE AND TO OBTAIN NECESSARY PERMITS. HAMMOND LUMBER COMPANY DOES NOT ASSUME ANY RESPONSIBILITY IF THEY ARE SO USED.

**PRELIMINARY DRAWING  
NOT FOR CONSTRUCTION**



**ROOF VIEW**  
SCALE: 1/4" = 1'-0"

**Maine Pine  
LOG HOMES**  
by Hammond Lumber Company

VISIT OUR WEBSITE:  
[WWW.MAINEPINELOGHOMES.COM](http://WWW.MAINEPINELOGHOMES.COM)  
All that's missing is you...

**MIKE SULLIVAN**

|                                    |                           |                  |     |          |          |                    |
|------------------------------------|---------------------------|------------------|-----|----------|----------|--------------------|
| <b>SULLIVAN RESIDENCE</b>          | MRM                       | SFB              | REL | 05/18/23 | 06/06/23 | LH220886<br>4 OF 4 |
| <b>28 X 36 CHALET<br/>BATH, ME</b> | Saturday, August 20, 2022 | SCALE = AS NOTED |     | 06/11/23 |          |                    |

**Hammond  
Lumber Company**

**21 LOCATIONS ACROSS MAINE**  
 Auburn • Bangor • Bar Harbor • Belfast • Belgrade • Blue Hill • Boothbay Harbor  
 Brunswick • Bucksport • Calais • Camden • Cherryfield • Damariscotta • Ellsworth  
 Fairfield • Farmington • Greenville • Machias • Portland • Rockland • Skowhegan  
[WWW.HAMMONDLUMBER.COM](http://WWW.HAMMONDLUMBER.COM)

DRAWINGS ARE PROVIDED BY HAMMOND LUMBER COMPANY AS A SERVICE TO ITS CUSTOMERS AND ARE INTENDED FOR INFORMATIONAL AND ILLUSTRATIVE PURPOSES ONLY. THE INFORMATION PRESENTED IN THESE DRAWINGS WAS NOT PREPARED OR REVIEWED BY A REGISTERED ARCHITECT AND SHOULD NOT BE USED AS A BASIS FOR CONSTRUCTION. HAMMOND LUMBER COMPANY SUGGESTS THAT ITS CUSTOMERS SEEK THE ADVICE OF A REGISTERED ARCHITECT OR ENGINEER TO OBTAIN TECHNICAL ASSISTANCE AND TO OBTAIN NECESSARY PERMITS. HAMMOND LUMBER COMPANY ASSUMES NO RESPONSIBILITY IF THEY ARE SO USED.